

Converting Colors

XYZ(40.7666, 37.6147, 35.9204)

Have a look what the booklet for
XYZ(40.7666, 37.6147, 35.9204)
contains.

XYZ(40.9264, 37.8150, 36.1523)	3
<i>Conversions</i>	4
<i>Details</i>	6
<i>Harmonies</i>	12
<i>Previews</i>	24
<i>Color Blindness Simulation</i>	28
<i>CSS Examples</i>	31

Color

**XYZ(40.9264, 37.8150,
36.1523)**

Conversions

Conversions Part 1

Format	Color
Hex	C69B9B
RGB	198, 155, 155
RGB Percent	78%, 61%, 61%
CMY	0.2235, 0.3921, 0.3922
CMYK	0.00, 0.22, 0.22, 0.22
HSL	0°, 27%, 69%
HSV	0°, 22%, 78%
XYZ	40.9264, 37.8150, 36.1523
YIQ	167.8570, 25.6280, 9.1160

Conversions

Conversions Part 2

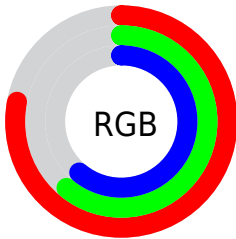
Format	Color
RYB	198, 155, 155
Decimal	13015963
CIELab	67.88, 16.00, 6.14
CIElCh	68, 17.133, 20.988
Yxy	37.8150, 0.3562, 0.3291
Android (android.graphics.Color)	4291206043 (0xFFC69B9B)
YUV	167.8570, -6.3385, 26.4354
Hunter-Lab	61.4939, 11.1838, 8.1891

Details

The XYZ color **40.9264, 37.8150, 36.1523** is a light color, and the websafe version is hex **CC9999**. A complement of this color would be **43.9041, 51.4324, 61.0397**, and the grayscale version is **37.1714, 39.1072, 42.5878**.

A 20% lighter version of the original color is **75.7952, 71.9566, 70.2158**, and **18.7767, 16.7397, 15.3382** is the 20% darker color. If you saturate the color by 10%, you get **36.3690, 31.1464, 27.0910**, and if you desaturate by 10%, it is **46.2988, 45.6765, 46.8313**.

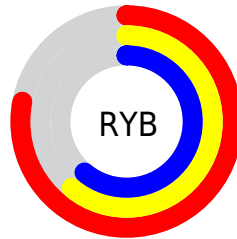
Distribution



Red (78%)

Green (61%)

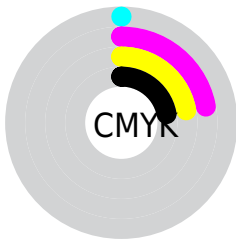
Blue (61%)



Red (78%)

Yellow (61%)

Blue (61%)

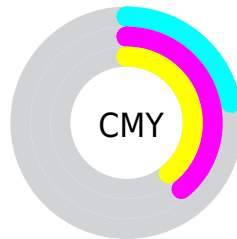


Cyan (0%)

Magenta (22%)

Yellow (22%)

Black (22%)



Cyan (22%)


Magenta (39%)


Yellow (39%)

Brightness & Saturation Gradients


These gradients show how the XYZ color 40.9264, 37.8150, 36.1523 changes by changing the brightness by 10 percent. The first figure shows a shift by +10% for each color and the second figure -10%.


Similar to the brightness gradients but the following saturation gradients show a change of the XYZ color 40.9264, 37.8150, 36.1523 by changing the saturation by 10% instead.


 40.9264, 37.8150,
36.1523


 40.9264, 37.8150,
36.1523


341.0808,
336.8257, 344.6833

 28.4490, 25.8391,
24.2612


 75.8476, 71.8245,
70.4388

 18.8066, 16.7033,
15.3135


 99.0220, 94.6269,
93.6712

 11.6338, 10.0232,
8.8907


126.4929,
121.8070, 121.5212

 6.5652, 5.4143,
4.5741

158.6255,
153.7491, 154.4073

 3.2356, 2.4924,
1.9453

195.7853,
190.8376, 192.7480

 1.2796, 0.8728,
0.5213

238.3375,

 0.1678, 0.0000,

233.4569, 236.9619

0.0000

286.6475,
281.9915, 287.4674

■ 0.0000, 0.0000,
0.0000

■ 40.9264, 37.8150,
36.1523

■ 40.9264, 37.8150,
36.1523

■ 36.3690, 31.1464,
27.0910

■ 46.2988, 45.6765,
46.8313

■ 32.5838, 25.6077,
19.5663

■ 52.5200, 54.7798,
59.1991

■ 29.5292, 21.1378,
13.4939

■ 59.6256, 65.1771,
73.3251

■ 27.1579, 17.6678,
8.7801

■ 67.6482, 76.9163,
89.2744

■ 25.4174, 15.1210,
5.3205

■ 76.6190, 90.0429,
107.1087

■ 24.2477, 13.4092,
2.9954

■ 77.0988, 90.7458,
108.0599

■ 23.5769, 12.4275,
1.6622

■ 23.2890, 12.0062,
1.0900

Harmonies

Analogous

The Analogous color harmony consists of three colors that are next to each other on the color wheel.



41.2280, 37.8150, 43.5088



40.9264, 37.8150, 36.1523



39.2550, 37.8150, 30.8189

Triad

The Triadic color harmony groups three colors that are evenly spaced from another and form a triangle on the color wheel.



40.9264, 37.8150, 36.1523



32.1164, 37.8150, 32.6331



35.1477, 37.8150, 57.3827

Complementary

The Complementary color scheme is a pair of colors which are on the opposite of each other on the color wheel.



40.9264, 37.8150, 36.1523



43.9041, 51.4324, 61.0397

Split Complementary

Split-complementary colors differ from the complementary color scheme. The scheme consists of three colors, the original color and two neighbors of the complement color.



32.8209, 37.8150, 53.6224



40.9264, 37.8150, 36.1523



31.1283, 37.8150, 38.9245

Square

The Square scheme is like the rectangle color scheme, but the four colors are evenly spaced on the color wheel.



40.9264, 37.8150, 36.1523



34.1429, 37.8150, 28.9678



31.3797, 37.8150, 46.6407



37.8033, 37.8150, 56.4024

Rectangle

The Rectangle color scheme consists of four colors that form a rectangle on the color wheel.



40.9264, 37.8150, 36.1523



37.6322, 37.8150, 28.8314



31.3797, 37.8150, 46.6407



34.3032, 37.8150, 56.6156

Sweetspot

The Sweet Spot groups the original color and five complimentary colors.



40.9274, 37.8167, 36.1531



86.8761, 88.0394, 92.6502



45.2034, 39.5261, 58.6731



18.4520, 18.6348, 19.5466



0.0000, 0.0000, 0.0000



20.3446, 21.4041, 23.3091

Same Dimension

The Same Dimension uses a secret algorithm to generate beautiful new colors.



40.9274, 37.8167, 36.1531



68.5272, 61.1899, 56.1726



44.8290, 45.6198, 37.4536



10.6340, 10.6371, 11.0555



15.1454, 7.8080, 0.7088



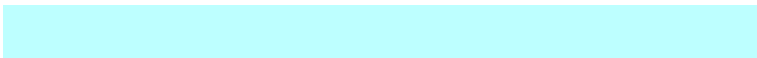
0.7172, 0.3698, 0.0336

Inverse Universe

The Inverse Universe completely reimagines the original color for something new.



43.9041, 51.4324, 61.0397



74.7200, 89.5167, 107.9480



39.3345, 42.2933, 59.5165



10.9467, 12.0674, 13.6698



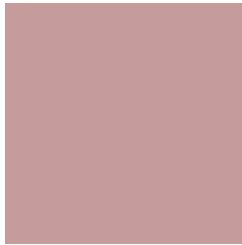
19.7589, 28.9118, 39.2835



0.9356, 1.3690, 1.8601

Previews

White Background



This preview shows how the XYZ color 40.9264, 37.8150, 36.1523 looks on a white background.

Color Contrast Check

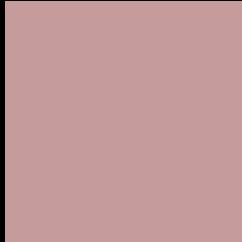
Large Text (above 18pt) WCAG AA × Fail

Any Text WCAG AA × Fail

Large Text (above 18pt) WCAG AAA × Fail

Any Text WCAG AAA × Fail

Black Background



This preview shows how the XYZ color 40.9264, 37.8150, 36.1523 looks on a black background.

Color Contrast Check

Large Text (above 18pt) WCAG AA ✓ Pass

Any Text WCAG AA ✓ Pass

Large Text (above 18pt) WCAG AAA ✓ Pass

Any Text WCAG AAA ✓ Pass

If you want to check with other color combinations, try the [Color Contrast Checker](#).

XYZ 40.9264, 37.8150, 36.1523

Background



This preview shows how black text looks on a background with the XYZ color 40.9264, 37.8150, 36.1523.



This preview shows how white text looks on a background with the XYZ color 40.9264, 37.8150,

Color Blindness Simulation

Color vision deficiency is a very complex topic, and I could not describe the different causes any better than Wikipedia does, so if you want to learn more, you should check out their [article about color blindness](#).

Dichromacy



Original Color

40.9264, 37.8150, 36.1523

Protanopia

36.3779, 37.9944, 38.6740

Deuteranopia

38.6532, 37.9138, 35.8527



Tritanopia

41.7360, 37.6412, 40.6631

Trichromacy



Original Color

40.9264, 37.8150, 36.1523

Protanomaly

37.7388, 37.6617, 37.6281

Deuteranomaly

39.2948, 37.7340, 35.7842

Tritanomaly

41.5418, 37.8265, 38.8300

Monochromacy



Original Color

40.9264, 37.8150, 36.1523

Achromatopsia

37.2190, 39.1572, 42.6422

Achromatomaly

38.2985, 38.4224, 40.0481

CSS Examples

Text

The CSS property to change the color of the text to XYZ 40.9264, 37.8150, 36.1523 is called "color". The color property can be set on classes, ids or directly on the HTML element.

This example shows how text in the color `rgb(198, 155, 155)` looks like.

```
.text, #text, p{  
    color:rgb(198, 155, 155)  
}
```

If you want to add a text shadow in that color use the text-shadow property, you can generate a text shadow directly with our [CSS Text Shadow Generator](#).

Here you see how black text with a 4 pixel rgb(198, 155, 155) colored shadow looks like.

```
.shadow{ text-shadow: 4px 4px 2px rgb(198, 155, 155) }
```

Border

The CSS property to change the border of an element to XYZ 40.9264, 37.8150, 36.1523 is called "border". The border property can be set on classes, ids or directly on the HTML element.

This example shows the color as border, it can be applied via the CSS property "border" or "border-color".

```
.border, #border, table{ border:4px solid rgb(198, 155, 155) }
```


If only the border color should be changed use the property `border-color`.

```
.border{ border-color:rgb(198, 155, 155) }
```

If you want to add a box shadow in that color use:

Here you see how a box with a 4 pixel `rgb(198, 155, 155)` colored shadow looks like.

```
.boxshadow{ -moz-box-shadow:4px 4px 4px  
4px rgb(198, 155, 155); -webkit-box-  
shadow:4px 4px 4px 4px rgb(198, 155, 155);  
box-shadow:4px 4px 4px 4px rgb(198, 155,  
155) }
```

Background

The CSS property to change the background color of an element to XYZ 40.9264, 37.8150, 36.1523 is called "background". The background property can be set on classes, ids or directly on the HTML element.

```
.background, #background, body{  
background: rgb(198, 155, 155) }
```

If only the background color should be changed can be used:

```
.background{ background-color: rgb(198,  
155, 155) }
```

This example shows the color as background, it is applied via the CSS property "background".

To optimize and compress your CSS code, you can use our [online CSS compressor and optimizer](#) based on csstidy. If you want to create a linear or radial gradient as background or border, check our [CSS Gradient Generator](#).

Hey! You found this booklet interesting? Support Converting Colors with the new Membership Option!

The pro membership hides all ads, plus gives you double the colors in the color bucket, and more awesome pro features!

[Learn more, Memberships starting at \\$2.50/m!](#)

**Follow me
on Twitter!**

@ConvertingColor