

Converting Colors

XYZ(40.7834, 37.9173, 37.1704)

Have a look what the booklet for
XYZ(40.7834, 37.9173, 37.1704)
contains.

XYZ(40.7392, 37.9470, 37.0756)	3
<i>Conversions</i>	4
<i>Details</i>	6
<i>Harmonies</i>	12
<i>Previews</i>	24
<i>Color Blindness Simulation</i>	28
<i>CSS Examples</i>	31

Color

**XYZ(40.7392, 37.9470,
37.0756)**

Conversions

Conversions Part 1

Format	Color
Hex	C49C9D
RGB	196, 156, 157
RGB Percent	77%, 61%, 62%
CMY	0.2314, 0.3882, 0.3843
CMYK	0.00, 0.20, 0.20, 0.23
HSL	359°, 25%, 69%
HSV	359°, 20%, 77%
XYZ	40.7392, 37.9470, 37.0756
YIQ	168.0740, 23.5190, 8.7910

Conversions

Conversions Part 2

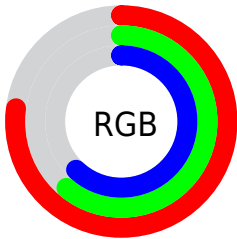
Format	Color
R _Y B	196, 156, 157
Decimal	12885149
CIE Lab	67.98, 15.00, 5.14
CIE LCh	68, 15.854, 18.901
Yxy	37.9470, 0.3519, 0.3278
Android (android.graphics.Color)	4291075229 (0xFFC49C9D)
YUV	168.0740, -5.4595, 24.4911
Hunter-Lab	61.6011, 10.2469, 7.4362

Details

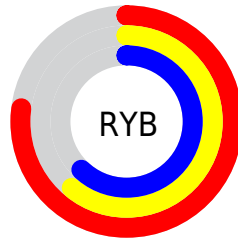
The XYZ color **40.7392, 37.9470, 37.0756** is a light color, and the websafe version is hex **CC9999**. A complement of this color would be **43.3021, 50.4888, 59.0953**, and the grayscale version is **37.2745, 39.2157, 42.7059**.

A 20% lighter version of the original color is **75.6859, 72.2246, 72.2390**, and **18.8084, 16.8945, 15.9053** is the 20% darker color. If you saturate the color by 10%, you get **36.2058, 31.2901, 28.1341**, and if you desaturate by 10%, it is **46.0607, 45.7708, 47.5399**.

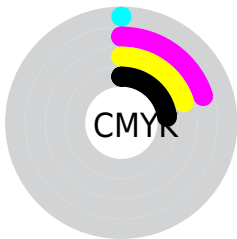
Distribution



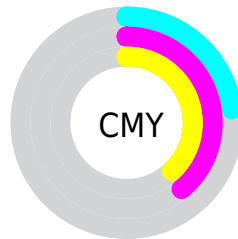
- Red (77%)
- Green (61%)
- Blue (62%)



- Red (77%)
- Yellow (61%)
- Blue (62%)



- Cyan (0%)
- Magenta (20%)
- Yellow (20%)
- Black (23%)





- Cyan (23%)
- Magenta (39%)
- Yellow (38%)

Brightness & Saturation Gradients


These gradients show how the XYZ color 40.7392, 37.9470, 37.0756 changes by changing the brightness by 10 percent. The first figure shows a shift by +10% for each color and the second figure -10%.


Similar to the brightness gradients but the following saturation gradients show a change of the XYZ color 40.7392, 37.9470, 37.0756 by changing the saturation by 10% instead.


 40.7392, 37.9470,
37.0756


 40.7392, 37.9470,
37.0756


340.3107,
337.3926, 348.8163

 28.3021, 25.9416,
24.9698


 75.5650, 72.0269,
71.8767

 18.6951, 16.7799,
15.8357

 98.6845, 94.8701,
95.4090

 11.5529, 10.0777,
9.2549


126.0955,
122.0948, 123.5873

 6.5100, 5.4505,
4.8087

158.1634,
154.0852, 156.8300

 3.2012, 2.5139,
2.0787

195.2535,
191.2258, 195.5557

 1.2610, 0.8836,
0.6031

237.7312,

 0.1538, 0.0000,

233.9009, 240.1830

0.0000

285.9618,
282.4951, 291.1303

■ 0.0000, 0.0000,
0.0000

■ 40.7392, 37.9470,
37.0756

■ 40.7392, 37.9470,
37.0756

■ 36.2058, 31.2901,
28.1341

■ 46.0607, 45.7708,
47.5399

■ 32.4201, 25.7395,
20.6423

■ 52.2019, 54.8082,
59.5908

■ 29.3428, 21.2367,
14.5245

■ 59.1965, 65.1097,
73.2913

■ 26.9300, 17.7160,
9.6973

■ 67.0754, 76.7212,
88.7004

■ 25.1326, 15.1041,
6.0683

■ 75.8681, 89.6865,
105.8741

■ 23.8950, 13.3176,
3.5328

■ 76.5751, 90.4758,
108.0354

■ 23.1515, 12.2577,
1.9679

■ 22.7918, 11.7465,
1.2062

Harmonies

Analogous

The Analogous color harmony consists of three colors that are next to each other on the color wheel.



40.9205, 37.9470, 43.9860



40.7392, 37.9470, 37.0756



39.2732, 37.9470, 31.9111

Triad

The Triadic color harmony groups three colors that are evenly spaced from another and form a triangle on the color wheel.



40.7392, 37.9470, 37.0756



32.6130, 37.9470, 33.0229



35.1629, 37.9470, 56.1180

Complementary

The Complementary color scheme is a pair of colors which are on the opposite of each other on the color wheel.



40.7392, 37.9470, 37.0756



43.3021, 50.4888, 59.0953

Split Complementary

Split-complementary colors differ from the complementary color scheme. The scheme consists of three colors, the original color and two neighbors of the complement color.



33.0411, 37.9470, 52.4122



40.7392, 37.9470, 37.0756



31.6142, 37.9470, 38.7598

Square

The Square scheme is like the rectangle color scheme, but the four colors are evenly spaced on the color wheel.



40.7392, 37.9470, 37.0756



34.5541, 37.9470, 29.7619



31.7673, 37.9470, 45.8719



37.6244, 37.9470, 55.5339

Rectangle

The Rectangle color scheme consists of four colors that form a rectangle on the color wheel.



40.7392, 37.9470, 37.0756



37.8005, 37.9470, 29.9053



31.7673, 37.9470, 45.8719



34.3883, 37.9470, 55.3173

Sweetspot

The Sweet Spot groups the original color and five complimentary colors.



40.7402, 37.9487, 37.0764



88.0521, 89.6998, 95.1742



44.2729, 39.3219, 57.4813



18.6910, 18.9703, 20.0655



0.0000, 0.0000, 0.0000



20.3446, 21.4041, 23.3091

Same Dimension

The Same Dimension uses a secret algorithm to generate beautiful new colors.



40.7402, 37.9487, 37.0764



70.3744, 63.7094, 60.4104



44.0319, 44.6677, 37.7556



10.0831, 10.0819, 10.5284



14.6494, 7.5495, 0.8000



0.6365, 0.3276, 0.0534

Inverse Universe

The Inverse Universe completely reimagines the original color for something new.



40.7402, 37.9487, 37.0764



70.3744, 63.7094, 60.4104



39.4636, 42.6311, 58.3735



10.0831, 10.0819, 10.5284



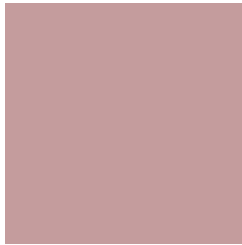
14.6494, 7.5495, 0.8000



0.6365, 0.3276, 0.0534

Previews

White Background



This preview shows how the XYZ color 40.7392, 37.9470, 37.0756 looks on a white background.

Color Contrast Check

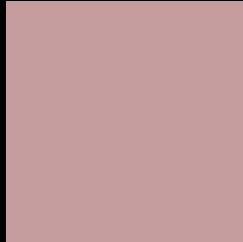
Large Text (above 18pt) WCAG AA × Fail

Any Text WCAG AA × Fail

Large Text (above 18pt) WCAG AAA × Fail

Any Text WCAG AAA × Fail

Black Background



This preview shows how the XYZ color 40.7392, 37.9470, 37.0756 looks on a black background.

Color Contrast Check

Large Text (above 18pt) WCAG AA ✓ Pass

Any Text WCAG AA ✓ Pass

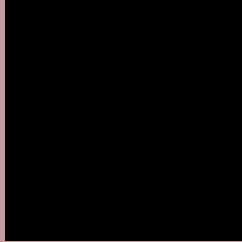
Large Text (above 18pt) WCAG AAA ✓ Pass

Any Text WCAG AAA ✓ Pass

If you want to check with other color combinations, try the [Color Contrast Checker](#).

XYZ 40.7392, 37.9470, 37.0756

Background



This preview shows how black text looks on a background with the XYZ color 40.7392, 37.9470, 37.0756.



This preview shows how white text looks on a background with the XYZ color 40.7392, 37.9470,

37.0756.

Color Blindness Simulation

Color vision deficiency is a very complex topic, and I could not describe the different causes any better than Wikipedia does, so if you want to learn more, you should check out their [article about color blindness](#).

Dichromacy



Original Color

40.7392, 37.9470, 37.0756

Protanopia

36.5543, 38.0649, 39.6031

Deuteranopia

38.8213, 37.9810, 36.7375



Tritanopia

41.6302, 38.0662, 41.2297

Trichromacy



Original Color

40.7392, 37.9470, 37.0756

Protanomaly

37.8559, 37.9624, 38.5900

Deuteranomaly

39.6341, 38.1437, 36.7260

Tritanomaly

41.3582, 37.9573, 39.7970

Monochromacy



Original Color

40.7392, 37.9470, 37.0756

Achromatopsia

37.2190, 39.1572, 42.6422

Achromatomaly

38.3364, 38.6962, 40.5705

CSS Examples

Text

The CSS property to change the color of the text to XYZ 40.7392, 37.9470, 37.0756 is called "color". The color property can be set on classes, ids or directly on the HTML element.

This example shows how text in the color `rgb(196, 156, 157)` looks like.

```
.text, #text, p{  
    color:rgb(196, 156, 157)  
}
```

If you want to add a text shadow in that color use the text-shadow property, you can generate a text shadow directly with our [CSS Text Shadow Generator](#).

Here you see how black text with a 4 pixel rgb(196, 156, 157) colored shadow looks like.

```
.shadow{ text-shadow: 4px 4px 2px rgb(196, 156, 157) }
```

Border

The CSS property to change the border of an element to XYZ 40.7392, 37.9470, 37.0756 is called "border". The border property can be set on classes, ids or directly on the HTML element.

This example shows the color as border, it can be applied via the CSS property "border" or "border-color".

```
.border, #border, table{ border:4px solid rgb(196, 156, 157) }
```


If only the border color should be changed use the property `border-color`.

```
.border{ border-color:rgb(196, 156, 157) }
```

If you want to add a box shadow in that color use:

Here you see how a box with a 4 pixel `rgb(196, 156, 157)` colored shadow looks like.

```
.boxshadow{ -moz-box-shadow:4px 4px 4px  
4px rgb(196, 156, 157); -webkit-box-  
shadow:4px 4px 4px 4px rgb(196, 156, 157);  
box-shadow:4px 4px 4px 4px rgb(196, 156,  
157) }
```

Background

The CSS property to change the background color of an element to XYZ 40.7392, 37.9470, 37.0756 is called "background". The background property can be set on classes, ids or directly on the HTML element.

```
.background, #background, body{  
background: rgb(196, 156, 157) }
```

If only the background color should be changed can be used:

```
.background{ background-color: rgb(196,  
156, 157) }
```

This example shows the color as background, it is applied via the CSS property "background".

To optimize and compress your CSS code, you can use our [online CSS compressor and optimizer](#) based on csstidy. If you want to create a linear or radial gradient as background or border, check our [CSS Gradient Generator](#).

Hey! You found this booklet interesting? Support Converting Colors with the new Membership Option!

The pro membership hides all ads, plus gives you double the colors in the color bucket, and more awesome pro features!

[Learn more, Memberships starting at \\$2.50/m!](#)

**Follow me
on Twitter!**

@ConvertingColor