

Converting Colors

XYZ(40.7835, 40.0485, 30.1627)

Have a look what the booklet for
XYZ(40.7835, 40.0485, 30.1627)
contains.

XYZ(40.7834, 39.9288, 29.9836)	3
<i>Conversions</i>	4
<i>Details</i>	6
<i>Harmonies</i>	12
<i>Previews</i>	24
<i>Color Blindness Simulation</i>	28
<i>CSS Examples</i>	31

Color

**XYZ(40.7834, 39.9288,
29.9836)**

Conversions

Conversions Part 1

Format	Color
Hex	C5A38B
RGB	197, 163, 139
RGB Percent	77%, 64%, 55%
CMY	0.2274, 0.3608, 0.4549
CMYK	0.00, 0.17, 0.29, 0.23
HSL	25°, 33%, 66%
HSV	25°, 29%, 77%
XYZ	40.7834, 39.9288, 29.9836
YIQ	170.4300, 27.9680, -0.2560

Conversions

Conversions Part 2

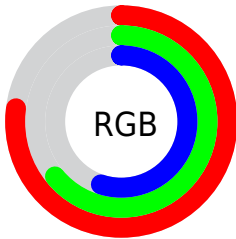
Format	Color
R _Y B	197, 180, 139
Decimal	12952459
CIE Lab	69.42, 8.94, 17.16
CIE LCh	69, 19.345, 62.475
Yxy	39.9288, 0.3684, 0.3607
Android (android.graphics.Color)	4291142539 (0xFFC5A38B)
YUV	170.4300, -15.4950, 23.3019
Hunter-Lab	63.1892, 4.6257, 16.0991

Details

The XYZ color **40.7834, 39.9288, 29.9836** is a light color, and the websafe version is hex **CC9999**. A complement of this color would be **35.6687, 39.4062, 58.5498**, and the grayscale version is **38.4892, 40.4937, 44.0976**.

A 20% lighter version of the original color is **75.5701, 75.0639, 60.9579**, and **18.6429, 17.8409, 11.9122** is the 20% darker color. If you saturate the color by 10%, you get **37.5144, 35.4905, 22.4209**, and if you desaturate by 10%, it is **44.5011, 44.8490, 38.9765**.

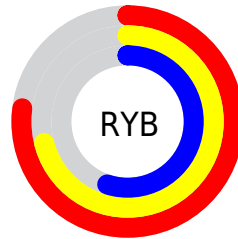
Distribution



Red (77%)

Green (64%)

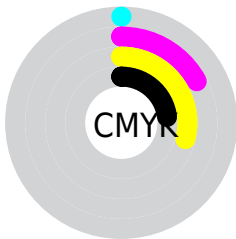
Blue (55%)



Red (77%)

Yellow (71%)

Blue (55%)

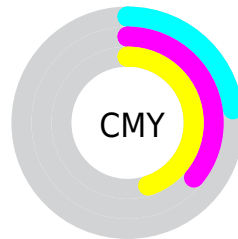


Cyan (0%)

Magenta (17%)

Yellow (29%)

Black (23%)



Cyan (23%)

Magenta (36%)

Yellow (45%)

Brightness & Saturation Gradients

These gradients show how the XYZ color 40.7834, 39.9288, 29.9836 changes by changing the brightness by 10 percent. The first figure shows a shift by +10% for each color and the second figure -10%.

Similar to the brightness gradients but the following saturation gradients show a change of the XYZ color 40.7834, 39.9288, 29.9836 by changing the saturation by 10% instead.

■ 40.7834, 39.9288,
29.9836

■ 40.7834, 39.9288,
29.9836

340.4926,
345.8234, 316.0329

■ 28.3368, 27.4830,
19.5742

■ 75.6318, 75.0551,
60.6969

■ 18.7214, 17.9363,
11.9049

■ 98.7642, 98.5044,
81.8380

■ 11.5720, 10.9043,
6.5572

■ 126.1894,
126.3903, 107.3933

■ 6.5231, 6.0025,
3.1125

158.2726,
159.0973, 137.7814

■ 3.2093, 2.8466,
1.1524

195.3791,
197.0097, 173.4209

■ 1.2654, 1.0522,
0.0000

237.8744,

■ 0.1571, 0.0000,

240.5119, 214.7303

0.0000

286.1238,
289.9883, 262.1281

■ 0.0000, 0.0000,
0.0000

■ 40.7834, 39.9288,
29.9836

■ 40.7834, 39.9288,
29.9836

■ 37.5144, 35.4905,
22.4209

■ 44.5011, 44.8490,
38.9765

■ 34.6722, 31.5130,
16.2108

■ 48.6821, 50.2604,
49.4665

■ 32.2371, 27.9816,
11.2722

■ 53.3440, 56.1787,
61.5195

■ 30.1870, 24.8788,
7.5140

■ 58.5028, 62.6175,
75.1965

■ 28.4968, 22.1853,
4.8327

■ 64.1733, 69.5897,
90.5554

■ 27.1377, 19.8801,
3.1068

■ 70.0134, 76.9651,
105.7734

■ 26.0627, 17.9340,
2.1196

■ 73.3767, 83.6916,
106.8945

■ 26.0081, 17.8345,
2.0716

■ 76.8361, 90.6104,
108.0476

Harmonies

Analogous

The Analogous color harmony consists of three colors that are next to each other on the color wheel.



43.2249, 39.9288, 34.9103



40.7834, 39.9288, 29.9836



37.6934, 39.9288, 28.5072

Triad

The Triadic color harmony groups three colors that are evenly spaced from another and form a triangle on the color wheel.



40.7834, 39.9288, 29.9836



32.2828, 39.9288, 44.2196



41.2546, 39.9288, 59.5900

Complementary

The Complementary color scheme is a pair of colors which are on the opposite of each other on the color wheel.



40.7834, 39.9288, 29.9836



35.6687, 39.4062, 58.5498

Split Complementary

Split-complementary colors differ from the complementary color scheme. The scheme consists of three colors, the original color and two neighbors of the complement color.



38.2100, 39.9288, 62.9367



40.7834, 39.9288, 29.9836



33.1248, 39.9288, 53.3386

Square

The Square scheme is like the rectangle color scheme, but the four colors are evenly spaced on the color wheel.



40.7834, 39.9288, 29.9836



32.8895, 39.9288, 36.0290



35.2531, 39.9288, 60.5074



43.5072, 39.9288, 51.8836

Rectangle

The Rectangle color scheme consists of four colors that form a rectangle on the color wheel.



40.7834, 39.9288, 29.9836



35.7099, 39.9288, 29.4883



35.2531, 39.9288, 60.5074



40.2842, 39.9288, 61.3062

Sweetspot

The Sweet Spot groups the original color and five complimentary colors.



40.7844, 39.9306, 29.9844



87.4304, 90.3246, 89.2075



39.8795, 33.3842, 44.2846



18.4646, 19.0138, 18.4602



0.0000, 0.0000, 0.0000



20.3446, 21.4041, 23.3091

Same Dimension

The Same Dimension uses a secret algorithm to generate beautiful new colors.



40.7844, 39.9306, 29.9844



69.3822, 66.5683, 45.1484



46.3609, 51.0836, 31.8433



10.9884, 11.3460, 11.1736



17.1848, 11.8868, 1.3886



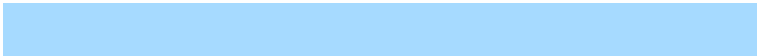
0.8848, 0.7050, 0.0894

Inverse Universe

The Inverse Universe completely reimagines the original color for something new.



35.6687, 39.4062, 58.5498



58.8112, 65.4754, 104.1461



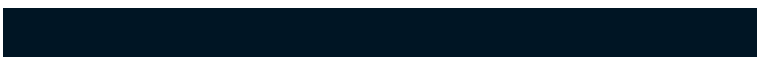
30.8208, 29.7104, 56.9338



10.5645, 11.3032, 13.5424



10.7805, 10.9549, 36.2907



0.5807, 0.6591, 1.7418

Previews

White Background



This preview shows how the XYZ color 40.7834, 39.9288, 29.9836 looks on a white background.

Color Contrast Check

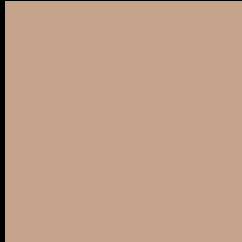
Large Text (above 18pt) WCAG AA × Fail

Any Text WCAG AA × Fail

Large Text (above 18pt) WCAG AAA × Fail

Any Text WCAG AAA × Fail

Black Background



This preview shows how the XYZ color 40.7834, 39.9288, 29.9836 looks on a black background.

Color Contrast Check

Large Text (above 18pt) WCAG AA ✓ Pass

Any Text WCAG AA ✓ Pass

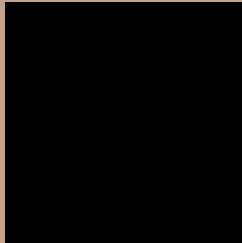
Large Text (above 18pt) WCAG AAA ✓ Pass

Any Text WCAG AAA ✓ Pass

If you want to check with other color combinations, try the [Color Contrast Checker](#).

XYZ 40.7834, 39.9288, 29.9836

Background



This preview shows how black text looks on a background with the XYZ color 40.7834, 39.9288, 29.9836.



This preview shows how white text looks on a background with the XYZ color 40.7834, 39.9288,

29.9836.

Color Blindness Simulation

Color vision deficiency is a very complex topic, and I could not describe the different causes any better than Wikipedia does, so if you want to learn more, you should check out their [article about color blindness](#).

Dichromacy



Original Color

40.7834, 39.9288, 29.9836

Protanopia

37.6609, 39.9126, 31.3102

Deuteranopia

40.7834, 39.9288, 29.9836



Tritanopia

43.6649, 39.8115, 43.9111

Trichromacy



Original Color

40.7834, 39.9288, 29.9836

Protanomaly

38.8761, 39.9996, 30.8710

Deuteranomaly

40.7834, 39.9288, 29.9836

Tritanomaly

42.6482, 39.9242, 38.2592

Monochromacy



Original Color

40.7834, 39.9288, 29.9836

Achromatopsia

38.2080, 40.1978, 43.7754

Achromatomaly

38.8991, 39.8439, 38.4413

CSS Examples

Text

The CSS property to change the color of the text to XYZ 40.7834, 39.9288, 29.9836 is called "color". The color property can be set on classes, ids or directly on the HTML element.

This example shows how text in the color `rgb(197, 163, 139)` looks like.

```
.text, #text, p{  
    color:rgb(197, 163, 139)  
}
```

If you want to add a text shadow in that color use the text-shadow property, you can generate a text shadow directly with our [CSS Text Shadow Generator](#).

Here you see how black text with a 4 pixel rgb(197, 163, 139) colored shadow looks like.

```
.shadow{ text-shadow: 4px 4px 2px rgb(197, 163, 139) }
```

Border

The CSS property to change the border of an element to XYZ 40.7834, 39.9288, 29.9836 is called "border". The border property can be set on classes, ids or directly on the HTML element.

This example shows the color as border, it can be applied via the CSS property "border" or "border-color".

```
.border, #border, table{ border:4px solid rgb(197, 163, 139) }
```


If only the border color should be changed use the property `border-color`.

```
.border{ border-color:rgb(197, 163, 139) }
```

If you want to add a box shadow in that color use:

Here you see how a box with a 4 pixel `rgb(197, 163, 139)` colored shadow looks like.

```
.boxshadow{ -moz-box-shadow:4px 4px 4px  
4px rgb(197, 163, 139); -webkit-box-  
shadow:4px 4px 4px 4px rgb(197, 163, 139);  
box-shadow:4px 4px 4px 4px rgb(197, 163,  
139) }
```

Background

The CSS property to change the background color of an element to XYZ 40.7834, 39.9288, 29.9836 is called "background". The background property can be set on classes, ids or directly on the HTML element.

```
.background, #background, body{  
background: rgb(197, 163, 139) }
```

If only the background color should be changed can be used:

```
.background{ background-color: rgb(197,  
163, 139) }
```

This example shows the color as background, it is applied via the CSS property "background".

To optimize and compress your CSS code, you can use our [online CSS compressor and optimizer](#) based on csstidy. If you want to create a linear or radial gradient as background or border, check our [CSS Gradient Generator](#).

Hey! You found this booklet interesting? Support Converting Colors with the new Membership Option!

The pro membership hides all ads, plus gives you double the colors in the color bucket, and more awesome pro features!

[Learn more, Memberships starting at \\$2.50/m!](#)

**Follow me
on Twitter!**

@ConvertingColor