

Converting Colors

XYZ(40.7918, 36.8964, 34.7746)

Have a look what the booklet for
XYZ(40.7918, 36.8964, 34.7746)
contains.

XYZ(40.8215, 36.8177, 34.6608)	3
<i>Conversions</i>	4
<i>Details</i>	6
<i>Harmonies</i>	12
<i>Previews</i>	24
<i>Color Blindness Simulation</i>	28
<i>CSS Examples</i>	31

Color

**XYZ(40.8215, 36.8177,
34.6608)**

Conversions

Conversions Part 1

Format	Color
Hex	C99798
RGB	201, 151, 152
RGB Percent	79%, 59%, 60%
CMY	0.2118, 0.4078, 0.4039
CMYK	0.00, 0.25, 0.24, 0.21
HSL	359°, 32%, 69%
HSV	359°, 25%, 79%
XYZ	40.8215, 36.8177, 34.6608
YIQ	166.0640, 29.4790, 10.9110

Conversions

Conversions Part 2

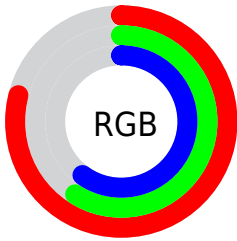
Format	Color
R _Y B	201, 151, 152
Decimal	13211544
CIE Lab	67.14, 18.88, 6.79
CIE LCh	67, 20.062, 19.768
Yxy	36.8177, 0.3635, 0.3279
Android (android.graphics.Color)	4291401624 (0xFFC99798)
YUV	166.0640, -6.9336, 30.6389
Hunter-Lab	60.6776, 13.9020, 8.6061

Details

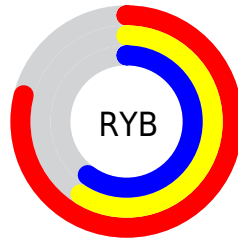
The XYZ color **40.8215, 36.8177, 34.6608** is a light color, and the websafe version is hex **CC9999**. A complement of this color would be **44.0760, 52.5236, 62.4611**, and the grayscale version is **36.2997, 38.1902, 41.5891**.

A 20% lighter version of the original color is **74.2119, 69.3789, 67.8726**, and **18.7602, 16.1649, 14.4433** is the 20% darker color. If you saturate the color by 10%, you get **36.3766, 30.2988, 25.8692**, and if you desaturate by 10%, it is **46.0879, 44.5501, 45.0491**.

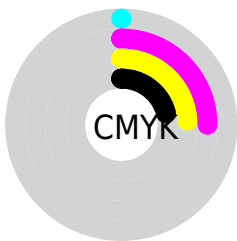
Distribution



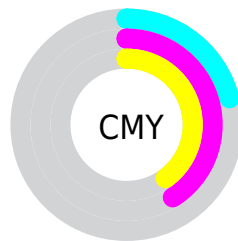
- Red (79%)
- Green (59%)
- Blue (60%)



- Red (79%)
- Yellow (59%)
- Blue (60%)



- Cyan (0%)
- Magenta (25%)
- Yellow (24%)
- Black (21%)





- Cyan (21%)
- Magenta (41%)
- Yellow (40%)

Brightness & Saturation Gradients

These gradients show how the XYZ color 40.8215, 36.8177, 34.6608 changes by changing the brightness by 10 percent. The first figure shows a shift by +10% for each color and the second figure -10%.


Similar to the brightness gradients but the following saturation gradients show a change of the XYZ color 40.8215, 36.8177, 34.6608 by changing the saturation by 10% instead.


 40.8215, 36.8177,
34.6608


 40.8215, 36.8177,
34.6608


340.6494,
332.5206, 337.9272

 28.3667, 25.0664,
23.1202


 75.6893, 70.2923,
68.1056

 18.7441, 16.1265,
14.4762


 98.8329, 92.7844,
90.8468

 11.5884, 9.6137,
8.3101


126.2703,
119.6255, 118.1588

 6.5343, 5.1436,
4.2034

158.3666,
151.2001, 150.4599

 3.2163, 2.3318,
1.7376

195.4874,
187.8925, 188.1688

 1.2692, 0.7904,
0.3863

237.9978,

 0.1600, 0.0000,

230.0871, 231.7039

0.0000

286.2634,
278.1683, 281.4839

■ 0.0000, 0.0000,
0.0000

■ 40.8215, 36.8177,
34.6608

■ 40.8215, 36.8177,
34.6608

■ 36.3766, 30.2988,
25.8692

■ 46.0879, 44.5501,
45.0491

■ 32.7090, 24.9272,
18.5931

■ 52.2111, 53.5479,
57.1054

■ 29.7749, 20.6380,
12.7476

■ 59.2280, 63.8660,
70.8993

■ 27.5250, 17.3577,
8.2383

■ 67.1724, 75.5546,
86.4959

■ 25.9041, 15.0039,
4.9600

■ 76.0764, 88.6614,
103.9568

■ 24.8480, 13.4811,
2.7911

■ 77.8975, 91.1576,
108.0973

■ 24.2793, 12.6733,
1.5857

■ 24.1094, 12.4263,
1.2428

Harmonies

Analogous

The Analogous color harmony consists of three colors that are next to each other on the color wheel.



41.1023, 36.8177, 43.1532



40.8215, 36.8177, 34.6608



38.9291, 36.8177, 28.5623

Triad

The Triadic color harmony groups three colors that are evenly spaced from another and form a triangle on the color wheel.



40.8215, 36.8177, 34.6608



30.6963, 36.8177, 30.1698



33.9604, 36.8177, 59.0385

Complementary

The Complementary color scheme is a pair of colors which are on the opposite of each other on the color wheel.



40.8215, 36.8177, 34.6608



44.0760, 52.5236, 62.4611

Split Complementary

Split-complementary colors differ from the complementary color scheme. The scheme consists of three colors, the original color and two neighbors of the complement color.



31.3337, 36.8177, 54.3601



40.8215, 36.8177, 34.6608



29.5232, 36.8177, 37.1719

Square

The Square scheme is like the rectangle color scheme, but the four colors are evenly spaced on the color wheel.



40.8215, 36.8177, 34.6608



33.0438, 36.8177, 26.2429



29.7495, 36.8177, 46.0545



37.0197, 36.8177, 58.1061

Rectangle

The Rectangle color scheme consists of four colors that form a rectangle on the color wheel.



40.8215, 36.8177, 34.6608



37.0662, 36.8177, 26.2781



29.7495, 36.8177, 46.0545



33.0007, 36.8177, 58.0463

Sweetspot

The Sweet Spot groups the original color and five complimentary colors.



40.8225, 36.8194, 34.6616



86.9277, 88.0593, 92.9242



45.2520, 38.5397, 60.3125



18.4639, 18.6393, 19.6098



0.0000, 0.0000, 0.0000



20.3446, 21.4041, 23.3091

Same Dimension

The Same Dimension uses a secret algorithm to generate beautiful new colors.



40.8225, 36.8194, 34.6616



65.5008, 56.5964, 50.6650



44.8749, 45.0542, 35.6114



10.6423, 10.6403, 11.0996



15.1631, 7.8148, 0.8026



0.7210, 0.3713, 0.0541

Inverse Universe

The Inverse Universe completely reimagines the original color for something new.



40.8225, 36.8194, 34.6616



65.5008, 56.5964, 50.6650



39.1607, 42.5061, 61.3991



10.6423, 10.6403, 11.0996



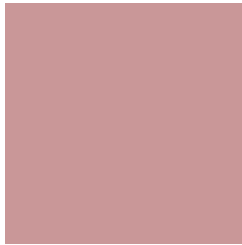
15.1631, 7.8148, 0.8026



0.7210, 0.3713, 0.0541

Previews

White Background



This preview shows how the XYZ color 40.8215, 36.8177, 34.6608 looks on a white background.

Color Contrast Check

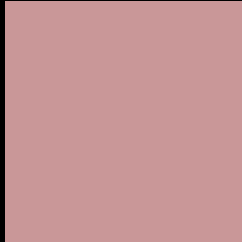
Large Text (above 18pt) WCAG AA × Fail

Any Text WCAG AA × Fail

Large Text (above 18pt) WCAG AAA × Fail

Any Text WCAG AAA × Fail

Black Background



This preview shows how the XYZ color 40.8215, 36.8177, 34.6608 looks on a black background.

Color Contrast Check

Large Text (above 18pt) WCAG AA ✓ Pass

Any Text WCAG AA ✓ Pass

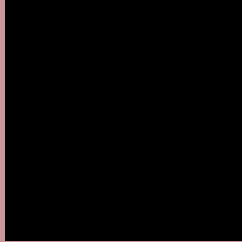
Large Text (above 18pt) WCAG AAA ✓ Pass

Any Text WCAG AAA ✓ Pass

If you want to check with other color combinations, try the [Color Contrast Checker](#).

XYZ 40.8215, 36.8177, 34.6608

Background



This preview shows how black text looks on a background with the XYZ color 40.8215, 36.8177, 34.6608.



This preview shows how white text looks on a background with the XYZ color 40.8215, 36.8177,

34.6608.

Color Blindness Simulation

Color vision deficiency is a very complex topic, and I could not describe the different causes any better than Wikipedia does, so if you want to learn more, you should check out their [article about color blindness](#).

Dichromacy



Original Color

40.8215, 36.8177, 34.6608

Protanopia

35.5037, 37.0224, 38.0757

Deuteranopia

37.5799, 36.8784, 34.4157



Tritanopia

41.6965, 36.9425, 38.6512

Trichromacy



Original Color

40.8215, 36.8177, 34.6608

Protanomaly

37.2213, 36.8999, 36.6131

Deuteranomaly

38.5425, 36.6242, 34.3159

Tritanomaly

41.4350, 36.8379, 37.2743

Monochromacy



Original Color

40.8215, 36.8177, 34.6608

Achromatopsia

36.2450, 38.1326, 41.5264

Achromatomaly

37.7683, 37.6467, 38.9941

CSS Examples

Text

The CSS property to change the color of the text to XYZ 40.8215, 36.8177, 34.6608 is called "color". The color property can be set on classes, ids or directly on the HTML element.

This example shows how text in the color `rgb(201, 151, 152)` looks like.

```
.text, #text, p{  
    color:rgb(201, 151, 152)  
}
```

If you want to add a text shadow in that color use the text-shadow property, you can generate a text shadow directly with our [CSS Text Shadow Generator](#).

Here you see how black text with a 4 pixel rgb(201, 151, 152) colored shadow looks like.

```
.shadow{ text-shadow: 4px 4px 2px rgb(201, 151, 152) }
```

Border

The CSS property to change the border of an element to XYZ 40.8215, 36.8177, 34.6608 is called "border". The border property can be set on classes, ids or directly on the HTML element.

This example shows the color as border, it can be applied via the CSS property "border" or "border-color".

```
.border, #border, table{ border:4px solid rgb(201, 151, 152) }
```


If only the border color should be changed use the property `border-color`.

```
.border{ border-color:rgb(201, 151, 152) }
```

If you want to add a box shadow in that color use:

Here you see how a box with a 4 pixel `rgb(201, 151, 152)` colored shadow looks like.

```
.boxshadow{ -moz-box-shadow:4px 4px 4px  
4px rgb(201, 151, 152); -webkit-box-  
shadow:4px 4px 4px 4px rgb(201, 151, 152);  
box-shadow:4px 4px 4px 4px rgb(201, 151,  
152) }
```

Background

The CSS property to change the background color of an element to XYZ 40.8215, 36.8177, 34.6608 is called "background". The background property can be set on classes, ids or directly on the HTML element.

```
.background, #background, body{  
background: rgb(201, 151, 152) }
```

If only the background color should be changed can be used:

```
.background{ background-color: rgb(201,  
151, 152) }
```

This example shows the color as background, it is applied via the CSS property "background".

To optimize and compress your CSS code, you can use our [online CSS compressor and optimizer](#) based on csstidy. If you want to create a linear or radial gradient as background or border, check our [CSS Gradient Generator](#).

Hey! You found this booklet interesting? Support Converting Colors with the new Membership Option!

The pro membership hides all ads, plus gives you double the colors in the color bucket, and more awesome pro features!

[Learn more, Memberships starting at \\$2.50/m!](#)

**Follow me
on Twitter!**

@ConvertingColor