

Converting Colors

XYZ(40.7964, 38.4541, 38.5470)

Have a look what the booklet for
XYZ(40.7964, 38.4541, 38.5470)
contains.

XYZ(40.8202, 38.4611, 38.5300)	3
<i>Conversions</i>	4
<i>Details</i>	6
<i>Harmonies</i>	12
<i>Previews</i>	24
<i>Color Blindness Simulation</i>	28
<i>CSS Examples</i>	31

Color

**XYZ(40.8202, 38.4611,
38.5300)**

Conversions

Conversions Part 1

Format	Color
Hex	C29EA0
RGB	194, 158, 160
RGB Percent	76%, 62%, 63%
CMY	0.2392, 0.3804, 0.3725
CMYK	0.00, 0.19, 0.18, 0.24
HSL	357°, 23%, 69%
HSV	357°, 19%, 76%
XYZ	40.8202, 38.4611, 38.5300
YIQ	168.9920, 20.8140, 8.2540

Conversions

Conversions Part 2

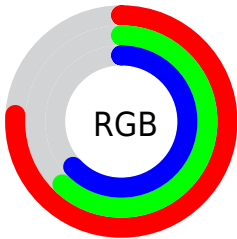
Format	Color
RYB	194, 158, 160
Decimal	12754592
CIELab	68.36, 13.62, 3.98
CIELCh	68, 14.192, 16.302
Yxy	38.4611, 0.3465, 0.3265
Android (android.graphics.Color)	4290944672 (0xFFC29EA0)
YUV	168.9920, -4.4331, 21.9320
Hunter-Lab	62.0170, 8.9607, 6.5762

Details

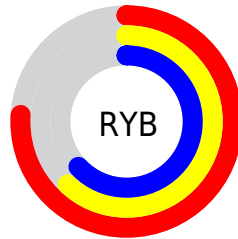
The XYZ color **40.8202, 38.4611, 38.5300** is a light color, and the websafe version is hex **CC9999**. A complement of this color would be **42.9083, 49.6595, 57.1954**, and the grayscale version is **37.7230, 39.6875, 43.2197**.

A 20% lighter version of the original color is **75.8437, 73.0040, 74.3838**, and **18.8332, 17.1950, 16.7943** is the 20% darker color. If you saturate the color by 10%, you get **36.2821, 31.7637, 29.6830**, and if you desaturate by 10%, it is **46.1191, 46.3013, 48.7972**.

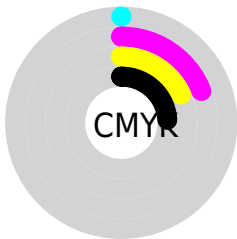
Distribution



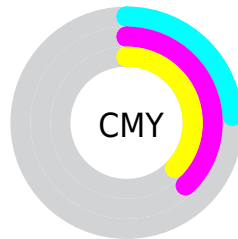
- Red (76%)
- Green (62%)
- Blue (63%)



- Red (76%)
- Yellow (62%)
- Blue (63%)



- Cyan (0%)
- Magenta (19%)
- Yellow (18%)
- Black (24%)





- Cyan (24%)
- Magenta (38%)
- Yellow (37%)

Brightness & Saturation Gradients


These gradients show how the XYZ color 40.8202, 38.4611, 38.5300 changes by changing the brightness by 10 percent. The first figure shows a shift by +10% for each color and the second figure -10%.

Similar to the brightness gradients but the following saturation gradients show a change of the XYZ color 40.8202, 38.4611, 38.5300 by changing the saturation by 10% instead.


 40.8202, 38.4611,
38.5300


 40.8202, 38.4611,
38.5300


340.6440,
339.5939, 355.2542

 28.3657, 26.3408,
26.0893


 75.6873, 72.8143,
74.1322

 18.7433, 17.0787,
16.6641


 98.8306, 95.8160,
98.1307

 11.5879, 10.2906,
9.8359


126.2675,
123.2136, 126.8189

 6.5339, 5.5921,
5.1861

158.3634,
155.3915, 160.6154

 3.2161, 2.5987,
2.2962

195.4837,
192.7340, 199.9386

 1.2690, 0.9260,
0.7291

237.9936,

 0.1599, 0.0000,

235.6257, 245.2071

0.0000

286.2586,
284.4508, 296.8395

0.0000, 0.0000,
0.0000

40.8202, 38.4611,
38.5300

40.8202, 38.4611,
38.5300

36.2821, 31.7637,
29.6830

46.1191, 46.3013,
48.7972

32.4668, 26.1507,
22.1914

52.2082, 55.3285,
60.5406

29.3381, 21.5668,
15.9890

59.1190, 65.5911,
73.8164

26.8550, 17.9495,
11.0030

66.8807, 77.1333,
88.6769

24.9724, 15.2294,
7.1534

75.5191, 89.9937,
105.1714

■ 23.6393, 13.3282,
4.3507

■ 76.0584, 90.2094,
108.0112

■ 22.7963, 12.1539,
2.4920

■ 22.3541, 11.5604,
1.4479

■ 22.3074, 11.4931,
1.3520

Harmonies

Analogous

The Analogous color harmony consists of three colors that are next to each other on the color wheel.



40.8744, 38.4611, 44.8481



40.8202, 38.4611, 38.5300



39.5937, 38.4611, 33.6253

Triad

The Triadic color harmony groups three colors that are evenly spaced from another and form a triangle on the color wheel.



40.8202, 38.4611, 38.5300



33.5480, 38.4611, 33.9667



35.5519, 38.4611, 54.9523

Complementary

The Complementary color scheme is a pair of colors which are on the opposite of each other on the color wheel.



40.8202, 38.4611, 38.5300



42.9083, 49.6595, 57.1954

Split Complementary

Split-complementary colors differ from the complementary color scheme. The scheme consists of three colors, the original color and two neighbors of the complement color.



33.6780, 38.4611, 51.3804



40.8202, 38.4611, 38.5300



32.5532, 38.4611, 39.0413

Square

The Square scheme is like the rectangle color scheme, but the four colors are evenly spaced on the color wheel.



40.8202, 38.4611, 38.5300



35.3677, 38.4611, 31.1793



32.5998, 38.4611, 45.4137



37.7708, 38.4611, 54.7796

Rectangle

The Rectangle color scheme consists of four colors that form a rectangle on the color wheel.



40.8202, 38.4611, 38.5300



38.3036, 38.4611, 31.6257



32.5998, 38.4611, 45.4137



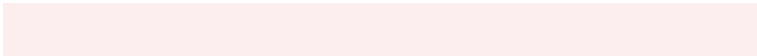
34.8626, 38.4611, 54.1353

Sweetspot

The Sweet Spot groups the original color and five complimentary colors.



40.8213, 38.4628, 38.5308



86.1337, 87.7050, 93.3883



43.6027, 39.5048, 56.3665



18.7074, 18.9768, 20.1517



0.0000, 0.0000, 0.0000



20.3446, 21.4041, 23.3091

Same Dimension

The Same Dimension uses a secret algorithm to generate beautiful new colors.



40.8213, 38.4628, 38.5308



70.6784, 64.8414, 63.4289



43.4798, 44.0571, 38.5621



10.0953, 10.0867, 10.5926



14.6763, 7.5603, 0.9416



0.6421, 0.3298, 0.0826

Inverse Universe

The Inverse Universe completely reimagines the original color for something new.



40.8213, 38.4628, 38.5308



70.6784, 64.8414, 63.4289



39.8398, 43.1658, 57.2715



10.0953, 10.0867, 10.5926



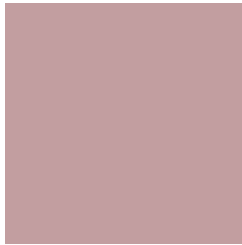
14.6763, 7.5603, 0.9416



0.6421, 0.3298, 0.0826

Previews

White Background



This preview shows how the XYZ color 40.8202, 38.4611, 38.5300 looks on a white background.

Color Contrast Check

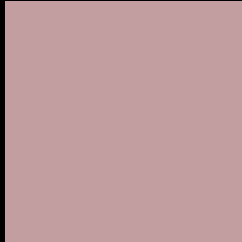
Large Text (above 18pt) WCAG AA × Fail

Any Text WCAG AA × Fail

Large Text (above 18pt) WCAG AAA × Fail

Any Text WCAG AAA × Fail

Black Background



This preview shows how the XYZ color 40.8202, 38.4611, 38.5300 looks on a black background.

Color Contrast Check

Large Text (above 18pt) WCAG AA ✓ Pass

Any Text WCAG AA ✓ Pass

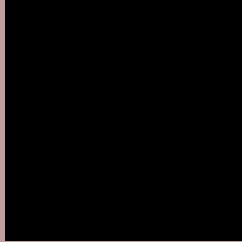
Large Text (above 18pt) WCAG AAA ✓ Pass

Any Text WCAG AAA ✓ Pass

If you want to check with other color combinations, try the [Color Contrast Checker](#).

XYZ 40.8202, 38.4611, 38.5300

Background



This preview shows how black text looks on a background with the XYZ color 40.8202, 38.4611, 38.5300.



This preview shows how white text looks on a background with the XYZ color 40.8202, 38.4611,

38.5300.

Color Blindness Simulation

Color vision deficiency is a very complex topic, and I could not describe the different causes any better than Wikipedia does, so if you want to learn more, you should check out their [article about color blindness](#).

Dichromacy



Original Color

40.8202, 38.4611, 38.5300

Protanopia

37.0053, 38.5351, 41.0849

Deuteranopia

39.2526, 38.4320, 38.1502



Tritanopia

41.7241, 38.5806, 42.7838

Trichromacy



Original Color

40.8202, 38.4611, 38.5300

Protanomaly

38.2985, 38.4224, 40.0481

Deuteranomaly

39.8151, 38.4636, 38.1266

Tritanomaly

41.4456, 38.4692, 41.3173

Monochromacy



Original Color

40.8202, 38.4611, 38.5300

Achromatopsia

37.7116, 39.6755, 43.2066

Achromatomaly

38.6982, 39.1284, 41.5893

CSS Examples

Text

The CSS property to change the color of the text to XYZ 40.8202, 38.4611, 38.5300 is called "color". The color property can be set on classes, ids or directly on the HTML element.

This example shows how text in the color `rgb(194, 158, 160)` looks like.

```
.text, #text, p{  
    color:rgb(194, 158, 160)  
}
```

If you want to add a text shadow in that color use the text-shadow property, you can generate a text shadow directly with our [CSS Text Shadow Generator](#).

Here you see how black text with a 4 pixel rgb(194, 158, 160) colored shadow looks like.

```
.shadow{ text-shadow: 4px 4px 2px rgb(194, 158, 160) }
```

Border

The CSS property to change the border of an element to XYZ 40.8202, 38.4611, 38.5300 is called "border". The border property can be set on classes, ids or directly on the HTML element.

This example shows the color as border, it can be applied via the CSS property "border" or "border-color".

```
.border, #border, table{ border:4px solid rgb(194, 158, 160) }
```


If only the border color should be changed use the property `border-color`.

```
.border{ border-color:rgb(194, 158, 160) }
```

If you want to add a box shadow in that color use:

Here you see how a box with a 4 pixel `rgb(194, 158, 160)` colored shadow looks like.

```
.boxshadow{ -moz-box-shadow:4px 4px 4px  
4px rgb(194, 158, 160); -webkit-box-  
shadow:4px 4px 4px 4px rgb(194, 158, 160);  
box-shadow:4px 4px 4px 4px rgb(194, 158,  
160) }
```

Background

The CSS property to change the background color of an element to XYZ 40.8202, 38.4611, 38.5300 is called "background". The background property can be set on classes, ids or directly on the HTML element.

```
.background, #background, body{  
background: rgb(194, 158, 160) }
```

If only the background color should be changed can be used:

```
.background{ background-color: rgb(194,  
158, 160) }
```

This example shows the color as background, it is applied via the CSS property "background".

To optimize and compress your CSS code, you can use our [online CSS compressor and optimizer](#) based on csstidy. If you want to create a linear or radial gradient as background or border, check our [CSS Gradient Generator](#).

Hey! You found this booklet interesting? Support Converting Colors with the new Membership Option!

The pro membership hides all ads, plus gives you double the colors in the color bucket, and more awesome pro features!

[Learn more, Memberships starting at \\$2.50/m!](#)

**Follow me
on Twitter!**

@ConvertingColor