

Converting Colors

XYZ(40.8718, 38.2227, 39.1278)

Have a look what the booklet for
XYZ(40.8718, 38.2227, 39.1278)
contains.

XYZ(40.7381, 38.1565, 38.9360)	3
<i>Conversions</i>	4
<i>Details</i>	6
<i>Harmonies</i>	12
<i>Previews</i>	24
<i>Color Blindness Simulation</i>	28
<i>CSS Examples</i>	31

Color

**XYZ(40.7381, 38.1565,
38.9360)**

Conversions

Conversions Part 1

Format	Color
Hex	C29DA1
RGB	194, 157, 161
RGB Percent	76%, 62%, 63%
CMY	0.2392, 0.3843, 0.3686
CMYK	0.00, 0.19, 0.17, 0.24
HSL	354°, 23%, 69%
HSV	354°, 19%, 76%
XYZ	40.7381, 38.1565, 38.9360
YIQ	168.5190, 20.7680, 9.0880

Conversions

Conversions Part 2

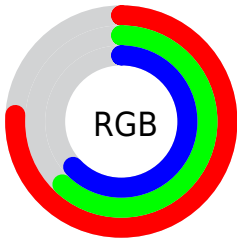
Format	Color
RYB	194, 157, 161
Decimal	12754337
CIELab	68.14, 14.33, 3.10
CIElCh	68, 14.663, 12.220
Yxy	38.1565, 0.3457, 0.3238
Android (android.graphics.Color)	4290944417 (0xFFC29DA1)
YUV	168.5190, -3.7069, 22.3468
Hunter-Lab	61.7709, 9.6221, 5.8675

Details

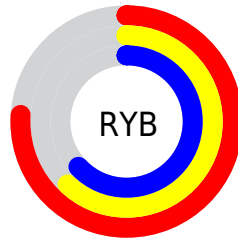
The XYZ color **40.7381, 38.1565, 38.9360** is a light color, and the websafe version is hex **CC9999**. A complement of this color would be **42.4922, 49.4702, 56.0268**, and the grayscale version is **37.4860, 39.4382, 42.9482**.

A 20% lighter version of the original color is **75.7218, 72.5541, 74.9791**, and **18.7837, 17.0093, 17.0450** is the 20% darker color. If you saturate the color by 10%, you get **36.2910, 31.5375, 30.4387**, and if you desaturate by 10%, it is **45.9197, 45.9057, 48.7210**.

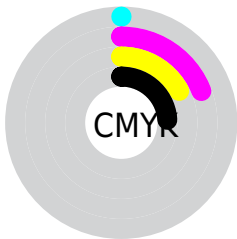
Distribution



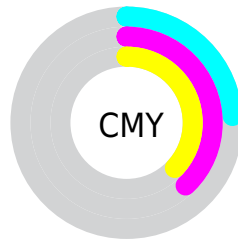
- Red (76%)
- Green (62%)
- Blue (63%)



- Red (76%)
- Yellow (62%)
- Blue (63%)



- Cyan (0%)
- Magenta (19%)
- Yellow (17%)
- Black (24%)





- Cyan (24%)
- Magenta (38%)
- Yellow (37%)

Brightness & Saturation Gradients


These gradients show how the XYZ color 40.7381, 38.1565, 38.9360 changes by changing the brightness by 10 percent. The first figure shows a shift by +10% for each color and the second figure -10%.


Similar to the brightness gradients but the following saturation gradients show a change of the XYZ color 40.7381, 38.1565, 38.9360 by changing the saturation by 10% instead.


 40.7381, 38.1565,
38.9360


 40.7381, 38.1565,
38.9360


340.3061,
338.2908, 357.0362

 28.3013, 26.1042,
26.4025


 75.5634, 72.3479,
74.7598

 18.6945, 16.9016,
16.8965

 98.6825, 95.2559,
98.8872

 11.5524, 10.1644,
9.9996


126.0932,
122.5511, 127.7163

 6.5097, 5.5081,
5.2931

158.1607,
154.6180, 161.6656

 3.2010, 2.5483,
2.3585

195.2504,
191.8411, 201.1537

 1.2609, 0.9008,
0.7637

237.7276,

 0.1537, 0.0000,

234.6046, 246.5991

0.0000

285.9577,
283.2931, 298.4204

■ 0.0000, 0.0000,
0.0000

■ 40.7381, 38.1565,
38.9360

■ 40.7381, 38.1565,
38.9360

■ 36.2910, 31.5375,
30.4387

■ 45.9197, 45.9057,
48.7210

■ 32.5421, 25.9910,
23.1732

■ 51.8637, 54.8291,
59.8417

■ 29.4566, 21.4621,
17.0828

■ 58.6003, 64.9745,
72.3467

■ 26.9958, 17.8888,
12.1056

■ 66.1573, 76.3856,
86.2813

■ 25.1166, 15.2025,
8.1740

■ 74.5611, 89.1040,
101.6888

■ 23.7705, 13.3252,
5.2129

■ 76.0582, 90.2094,
108.0112

■ 22.9010, 12.1656,
3.1371

■ 22.4182, 11.5687,
1.8394

■ 22.3832, 11.5234,
1.7518

Harmonies

Analogous

The Analogous color harmony consists of three colors that are next to each other on the color wheel.



40.6189, 38.1565, 45.5131



40.7381, 38.1565, 38.9360



39.6229, 38.1565, 33.6421

Triad

The Triadic color harmony groups three colors that are evenly spaced from another and form a triangle on the color wheel.



40.7381, 38.1565, 38.9360



33.3902, 38.1565, 32.8968



34.9398, 38.1565, 54.7344

Complementary

The Complementary color scheme is a pair of colors which are on the opposite of each other on the color wheel.



40.7381, 38.1565, 38.9360



42.4922, 49.4702, 56.0268

Split Complementary

Split-complementary colors differ from the complementary color scheme. The scheme consists of three colors, the original color and two neighbors of the complement color.



33.1054, 38.1565, 50.5998



40.7381, 38.1565, 38.9360



32.2369, 38.1565, 37.8163

Square

The Square scheme is like the rectangle color scheme, but the four colors are evenly spaced on the color wheel.



40.7381, 38.1565, 38.9360



35.3435, 38.1565, 30.4093



32.1349, 38.1565, 44.2700



37.2057, 38.1565, 55.1155

Rectangle

The Rectangle color scheme consists of four colors that form a rectangle on the color wheel.



40.7381, 38.1565, 38.9360



38.3558, 38.1565, 31.3667



32.1349, 38.1565, 44.2700



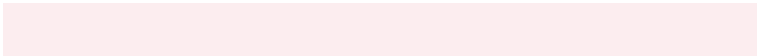
34.2547, 38.1565, 53.7189

Sweetspot

The Sweet Spot groups the original color and five complimentary colors.



40.7392, 38.1582, 38.9368



86.2510, 87.7519, 94.0061



42.9519, 38.9172, 56.2872



18.7357, 18.9881, 20.3006



0.0000, 0.0000, 0.0000



20.3446, 21.4041, 23.3091

Same Dimension

The Same Dimension uses a secret algorithm to generate beautiful new colors.



40.7392, 38.1582, 38.9368



70.1884, 63.7364, 63.6509



42.9326, 43.1002, 37.9568



10.1164, 10.0952, 10.7037



14.7315, 7.5823, 1.2320



0.6516, 0.3337, 0.1329

Inverse Universe

The Inverse Universe completely reimagines the original color for something new.



40.7392, 38.1582, 38.9368



70.1884, 63.7364, 63.6509



39.9279, 43.6331, 57.3568



10.1164, 10.0952, 10.7037



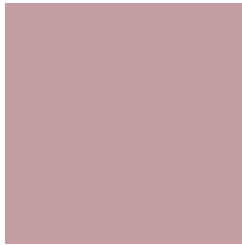
14.7315, 7.5823, 1.2320



0.6516, 0.3337, 0.1329

Previews

White Background



This preview shows how the XYZ color 40.7381, 38.1565, 38.9360 looks on a white background.

Color Contrast Check

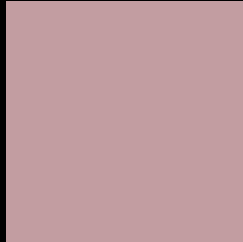
Large Text (above 18pt) WCAG AA × Fail

Any Text WCAG AA × Fail

Large Text (above 18pt) WCAG AAA × Fail

Any Text WCAG AAA × Fail

Black Background



This preview shows how the XYZ color 40.7381, 38.1565, 38.9360 looks on a black background.

Color Contrast Check

Large Text (above 18pt) WCAG AA ✓ Pass

Any Text WCAG AA ✓ Pass

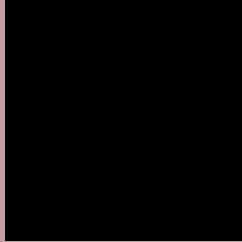
Large Text (above 18pt) WCAG AAA ✓ Pass

Any Text WCAG AAA ✓ Pass

If you want to check with other color combinations, try the [Color Contrast Checker](#).

XYZ 40.7381, 38.1565, 38.9360

Background



This preview shows how black text looks on a background with the XYZ color 40.7381, 38.1565, 38.9360.



This preview shows how white text looks on a background with the XYZ color 40.7381, 38.1565,

38.9360.

Color Blindness Simulation

Color vision deficiency is a very complex topic, and I could not describe the different causes any better than Wikipedia does, so if you want to learn more, you should check out their [article about color blindness](#).

Dichromacy



Original Color

40.7381, 38.1565, 38.9360

Protanopia

36.7003, 38.0985, 41.4958

Deuteranopia

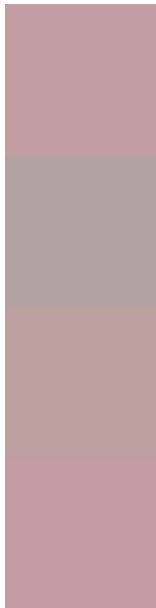
39.0976, 38.3421, 38.5978



Tritanopia

41.4620, 38.2062, 42.2350

Trichromacy



Original Color

40.7381, 38.1565, 38.9360

Protanomaly

37.9813, 37.9860, 40.4522

Deuteranomaly

39.6550, 38.3710, 38.5740

Tritanomaly

41.1857, 38.0956, 40.7798

Monochromacy



Original Color

40.7381, 38.1565, 38.9360

Achromatopsia

37.7116, 39.6755, 43.2066

Achromatomaly

38.6982, 39.1284, 41.5893

CSS Examples

Text

The CSS property to change the color of the text to XYZ 40.7381, 38.1565, 38.9360 is called "color". The color property can be set on classes, ids or directly on the HTML element.

This example shows how text in the color `rgb(194, 157, 161)` looks like.

```
.text, #text, p{  
    color:rgb(194, 157, 161)  
}
```

If you want to add a text shadow in that color use the text-shadow property, you can generate a text shadow directly with our [CSS Text Shadow Generator](#).

Here you see how black text with a 4 pixel rgb(194, 157, 161) colored shadow looks like.

```
.shadow{ text-shadow: 4px 4px 2px rgb(194, 157, 161) }
```

Border

The CSS property to change the border of an element to XYZ 40.7381, 38.1565, 38.9360 is called "border". The border property can be set on classes, ids or directly on the HTML element.

This example shows the color as border, it can be applied via the CSS property "border" or "border-color".

```
.border, #border, table{ border:4px solid rgb(194, 157, 161) }
```


If only the border color should be changed use the property `border-color`.

```
.border{ border-color:rgb(194, 157, 161) }
```

If you want to add a box shadow in that color use:

Here you see how a box with a 4 pixel `rgb(194, 157, 161)` colored shadow looks like.

```
.boxshadow{ -moz-box-shadow:4px 4px 4px  
4px rgb(194, 157, 161); -webkit-box-  
shadow:4px 4px 4px 4px rgb(194, 157, 161);  
box-shadow:4px 4px 4px 4px rgb(194, 157,  
161) }
```

Background

The CSS property to change the background color of an element to XYZ 40.7381, 38.1565, 38.9360 is called "background". The background property can be set on classes, ids or directly on the HTML element.

```
.background, #background, body{  
background: rgb(194, 157, 161) }
```

If only the background color should be changed can be used:

```
.background{ background-color: rgb(194,  
157, 161) }
```

This example shows the color as background, it is applied via the CSS property "background".

To optimize and compress your CSS code, you can use our [online CSS compressor and optimizer](#) based on csstidy. If you want to create a linear or radial gradient as background or border, check our [CSS Gradient Generator](#).

Hey! You found this booklet interesting? Support Converting Colors with the new Membership Option!

The pro membership hides all ads, plus gives you double the colors in the color bucket, and more awesome pro features!

[Learn more, Memberships starting at \\$2.50/m!](#)

**Follow me
on Twitter!**

@ConvertingColor