

Converting Colors

XYZ(40.8952, 42.0304, 49.1373)

Have a look what the booklet for
XYZ(40.8952, 42.0304, 49.1373)
contains.

XYZ(40.8952, 42.0304, 49.1373)	3
<i>Conversions</i>	4
<i>Details</i>	6
<i>Harmonies</i>	12
<i>Previews</i>	24
<i>Color Blindness Simulation</i>	28
<i>CSS Examples</i>	31

Color

**XYZ(40.8952, 42.0304,
49.1373)**

Conversions

Conversions Part 1

Format	Color
Hex	B0ACB4
RGB	176, 172, 180
RGB Percent	69%, 67%, 71%
CMY	0.3098, 0.3255, 0.2941
CMYK	0.02, 0.04, 0.00, 0.29
HSL	270°, 5%, 69%
HSV	270°, 4%, 71%
XYZ	40.8952, 42.0304, 49.1373
YIQ	174.1080, -0.1840, 3.3360

Conversions

Conversions Part 2

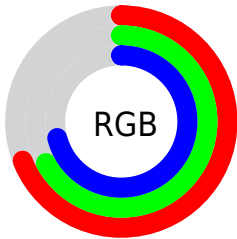
Format	Color
RYB	176, 172, 180
Decimal	11578548
CIELab	70.89, 2.94, -3.59
CIELCh	71, 4.640, 309.236
Yxy	42.0304, 0.3097, 0.3183
Android (android.graphics.Color)	4289768628 (0xFFB0ACB4)
YUV	174.1080, 2.9048, 1.6593
Hunter-Lab	64.8309, -0.8565, 0.4439

Details

The XYZ color **40.8952, 42.0304, 49.1373** is a light color, and the websafe version is hex **999999**. A complement of this color would be **41.6737, 44.8523, 45.4927**, and the grayscale version is **40.2742, 42.3716, 46.1427**.

A 20% lighter version of the original color is **75.8881, 78.1501, 90.4416**, and **18.8594, 19.2503, 22.8004** is the 20% darker color. If you saturate the color by 10%, you get **35.7305, 34.6231, 47.9804**, and if you desaturate by 10%, it is **46.6614, 50.4390, 50.4570**.

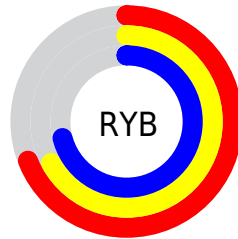
Distribution



Red (69%)

Green (67%)

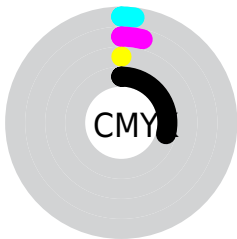
Blue (71%)



Red (69%)

Yellow (67%)

Blue (71%)

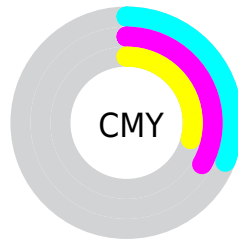


Cyan (2%)

Magenta (4%)

Yellow (0%)

Black (29%)



Cyan (31%)

Magenta (33%)

Yellow (29%)

Brightness & Saturation Gradients

These gradients show how the XYZ color 40.8952, 42.0304, 49.1373 changes by changing the brightness by 10 percent. The first figure shows a shift by +10% for each color and the second figure -10%.

Similar to the brightness gradients but the following saturation gradients show a change of the XYZ color 40.8952, 42.0304, 49.1373 by changing the saturation by 10% instead.

■ 40.8952, 42.0304,
49.1373

■ 40.8952, 42.0304,
49.1373

340.9525,
354.6089, 399.9206

■ 28.4245, 29.1251,
34.3620

■ 75.8005, 78.2456,
90.2784

■ 18.7880, 19.1755,
22.8923

98.9658, 102.3244,
117.4814

■ 11.6203, 11.7971,
14.3094

126.4267,
130.8963, 149.6640

■ 6.5560, 6.6057,
8.1950

158.5486,
164.3460, 187.2448

■ 3.2299, 3.2168,
4.1304

195.6967,
203.0576, 230.6423

■ 1.2765, 1.2459,
1.6972

238.2365,

■ 0.1655, 0.0987,

247.4158, 280.2751

0.3588

286.5333,
297.8047, 336.5617

■ 0.0000, 0.0000,
0.0000

■ 40.8952, 42.0304,
49.1373

■ 40.8952, 42.0304,
49.1373

■ 35.7305, 34.6231,
47.9804

■ 46.6614, 50.4390,
50.4570

■ 31.1425, 28.1733,
46.9773

■ 53.0455, 59.8796,
51.9428

■ 27.1100, 22.6418,
46.1221

■ 60.0677, 70.3886,
53.6011

■ 23.6089, 17.9847,
45.4077

■ 67.7461, 81.9988,
55.4374

■ 20.6135, 14.1545,
44.8263

■ 73.8228, 90.1904,
56.6983

■ 18.0952, 11.0986,
44.3692

■ 76.6385, 91.6420,
56.8301

■ 16.0225, 8.7588,
44.0268

■ 79.6036, 93.1705,
56.9688

■ 14.3595, 7.0675,
43.7880

■ 82.7200, 94.7771,
57.1147

■ 13.0631, 5.9438,
43.6394

■ 85.2383, 96.0753,
57.2325

Harmonies

Analogous

The Analogous color harmony consists of three colors that are next to each other on the color wheel.



40.1874, 42.0304, 50.0909



40.8952, 42.0304, 49.1373



41.3532, 42.0304, 47.2881

Triad

The Triadic color harmony groups three colors that are evenly spaced from another and form a triangle on the color wheel.



40.8952, 42.0304, 49.1373



40.4773, 42.0304, 41.9018



38.5009, 42.0304, 46.4499

Complementary

The Complementary color scheme is a pair of colors which are on the opposite of each other on the color wheel.



40.8952, 42.0304, 49.1373



41.6737, 44.8523, 45.4927

Split Complementary

Split-complementary colors differ from the complementary color scheme. The scheme consists of three colors, the original color and two neighbors of the complement color.



38.5763, 42.0304, 44.2729



40.8952, 42.0304, 49.1373



39.7108, 42.0304, 41.6937

Square

The Square scheme is like the rectangle color scheme, but the four colors are evenly spaced on the color wheel.



40.8952, 42.0304, 49.1373



41.1098, 42.0304, 43.1266



39.0168, 42.0304, 42.5487



38.8096, 42.0304, 48.5068

Rectangle

The Rectangle color scheme consists of four colors that form a rectangle on the color wheel.



40.8952, 42.0304, 49.1373



41.4518, 42.0304, 45.8207



39.0168, 42.0304, 42.5487



38.4823, 42.0304, 45.7073

Sweetspot

The Sweet Spot groups the original color and five complimentary colors.



40.8964, 42.0322, 49.1382



77.6095, 81.2269, 89.8825



40.8045, 43.1705, 49.3628



16.7862, 17.5736, 19.4296



86.6293, 91.1408, 99.2523



17.0014, 17.8868, 19.4787

Same Dimension

The Same Dimension uses a secret algorithm to generate beautiful new colors.



40.8964, 42.0322, 49.1382



73.5185, 75.2951, 88.9532



41.7833, 42.4894, 49.1797



8.8665, 9.0555, 10.7869



8.7678, 3.8558, 30.4191



0.3432, 0.1560, 0.9603

Inverse Universe

The Inverse Universe completely reimagines the original color for something new.



41.4129, 42.3448, 47.0671



74.5882, 75.9425, 84.6637



40.8117, 44.4079, 45.4524



9.0090, 9.1418, 10.2155



14.4599, 7.3015, 7.5815



0.4844, 0.2415, 0.3936

Previews

White Background



This preview shows how the XYZ color 40.8952, 42.0304, 49.1373 looks on a white background.

Color Contrast Check

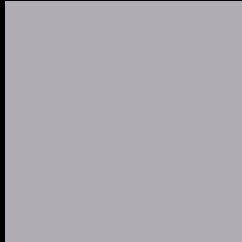
Large Text (above 18pt) WCAG AA × Fail

Any Text WCAG AA × Fail

Large Text (above 18pt) WCAG AAA × Fail

Any Text WCAG AAA × Fail

Black Background



This preview shows how the XYZ color 40.8952, 42.0304, 49.1373 looks on a black background.

Color Contrast Check

Large Text (above 18pt) WCAG AA ✓ Pass

Any Text WCAG AA ✓ Pass

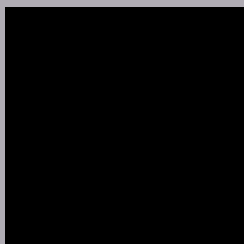
Large Text (above 18pt) WCAG AAA ✓ Pass

Any Text WCAG AAA ✓ Pass

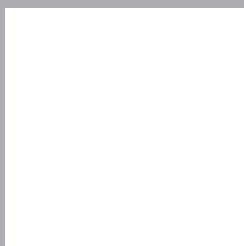
If you want to check with other color combinations, try the [Color Contrast Checker](#).

XYZ 40.8952, 42.0304, 49.1373

Background



This preview shows how black text looks on a background with the XYZ color 40.8952, 42.0304, 49.1373.



This preview shows how white text looks on a background with the XYZ color 40.8952, 42.0304,

49.1373.

Color Blindness Simulation

Color vision deficiency is a very complex topic, and I could not describe the different causes any better than Wikipedia does, so if you want to learn more, you should check out their [article about color blindness](#).

Dichromacy



Original Color

40.8952, 42.0304, 49.1373

Protanopia

40.6699, 41.9143, 49.1267

Deuteranopia

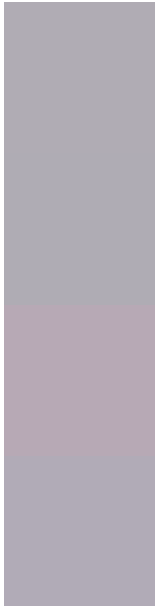
42.8366, 41.9063, 49.5470



Tritanopia

41.4513, 41.9757, 51.8163

Trichromacy



Original Color

40.8952, 42.0304, 49.1373

Protanomaly

40.6699, 41.9143, 49.1267

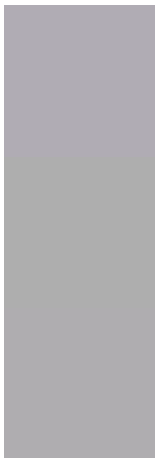
Deuteranomaly

42.0569, 41.7794, 49.5637

Tritanomaly

41.2416, 41.8918, 50.7120

Monochromacy



Original Color

40.8952, 42.0304, 49.1373

Achromatopsia

40.2316, 42.3268, 46.0938

Achromatomaly

40.4592, 42.1357, 47.0749

CSS Examples

Text

The CSS property to change the color of the text to XYZ 40.8952, 42.0304, 49.1373 is called "color". The color property can be set on classes, ids or directly on the HTML element.

This example shows how text in the color `rgb(176, 172, 180)` looks like.

```
.text, #text, p{  
    color:rgb(176, 172, 180)  
}
```

If you want to add a text shadow in that color use the text-shadow property, you can generate a text shadow directly with our [CSS Text Shadow Generator](#).

Here you see how black text with a 4 pixel rgb(176, 172, 180) colored shadow looks like.

```
.shadow{ text-shadow: 4px 4px 2px rgb(176, 172, 180) }
```

Border

The CSS property to change the border of an element to XYZ 40.8952, 42.0304, 49.1373 is called "border". The border property can be set on classes, ids or directly on the HTML element.

This example shows the color as border, it can be applied via the CSS property "border" or "border-color".

```
.border, #border, table{ border:4px solid rgb(176, 172, 180) }
```


If only the border color should be changed use the property `border-color`.

```
.border{ border-color:rgb(176, 172, 180) }
```

If you want to add a box shadow in that color use:

Here you see how a box with a 4 pixel `rgb(176, 172, 180)` colored shadow looks like.

```
.boxshadow{ -moz-box-shadow:4px 4px 4px  
4px rgb(176, 172, 180); -webkit-box-  
shadow:4px 4px 4px 4px rgb(176, 172, 180);  
box-shadow:4px 4px 4px 4px rgb(176, 172,  
180) }
```

Background

The CSS property to change the background color of an element to XYZ 40.8952, 42.0304, 49.1373 is called "background". The background property can be set on classes, ids or directly on the HTML element.

```
.background, #background, body{  
background: rgb(176, 172, 180) }
```

If only the background color should be changed can be used:

```
.background{ background-color: rgb(176,  
172, 180) }
```

This example shows the color as background, it is applied via the CSS property "background".

To optimize and compress your CSS code, you can use our [online CSS compressor and optimizer](#) based on csstidy. If you want to create a linear or radial gradient as background or border, check our [CSS Gradient Generator](#).

Hey! You found this booklet interesting? Support Converting Colors with the new Membership Option!

The pro membership hides all ads, plus gives you double the colors in the color bucket, and more awesome pro features!

[Learn more, Memberships starting at \\$2.50/m!](#)

**Follow me
on Twitter!**

@ConvertingColor