

# Converting Colors

XYZ(41.1251, 39.3444, 32.3310)

Have a look what the booklet for  
XYZ(41.1251, 39.3444, 32.3310)  
contains.

<b>XYZ(40.9703, 39.1917, 32.1934)</b> .....	3
<b><i>Conversions</i></b> .....	4
<b><i>Details</i></b> .....	6
<b><i>Harmonies</i></b> .....	12
<b><i>Previews</i></b> .....	24
<b><i>Color Blindness Simulation</i></b> .....	28
<b><i>CSS Examples</i></b> .....	31

# **Color**

**XYZ(40.9703, 39.1917,  
32.1934)**

# Conversions

## Conversions Part 1

<b>Format</b>	<b>Color</b>
Hex	C6A091
RGB	198, 160, 145
RGB Percent	78%, 63%, 57%
CMY	0.2235, 0.3725, 0.4314
CMYK	0.00, 0.19, 0.27, 0.22
HSL	17°, 32%, 67%
HSV	17°, 27%, 78%
XYZ	40.9703, 39.1917, 32.1934
YIQ	169.6520, 27.4630, 3.3910

# Conversions

## Conversions Part 2

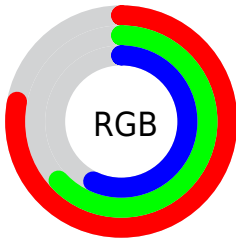
Format	Color
R <sub>Y</sub> B	198, 166, 145
Decimal	13017233
CIE Lab	68.89, 11.80, 13.12
CIE LCh	69, 17.645, 48.049
Yxy	39.1917, 0.3646, 0.3488
Android (android.graphics.Color)	4291207313 (0xFFC6A091)
YUV	169.6520, -12.1534, 24.8612
Hunter-Lab	62.6033, 7.2624, 13.3327

# Details

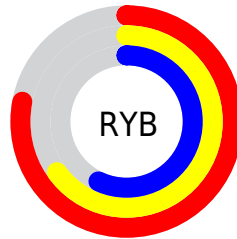
The XYZ color **40.9703, 39.1917, 32.1934** is a light color, and the websafe version is hex **CC9999**. A complement of this color would be **38.8030, 43.9625, 59.8666**, and the grayscale version is **38.0851, 40.0685, 43.6346**.

A 20% lighter version of the original color is **75.8492, 73.9844, 64.3156**, and **18.7558, 17.3910, 13.1947** is the 20% darker color. If you saturate the color by 10%, you get **37.2529, 33.9909, 24.0669**, and if you desaturate by 10%, it is **45.2368, 45.0645, 41.8166**.

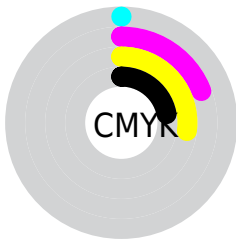
# Distribution



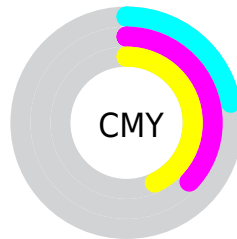
- Red (78%)
- Green (63%)
- Blue (57%)



- Red (78%)
- Yellow (65%)
- Blue (57%)



- Cyan (0%)
- Magenta (19%)
- Yellow (27%)
- Black (22%)




- Cyan (22%)
- Magenta (37%)
- Yellow (43%)


# Brightness & Saturation Gradients

These gradients show how the XYZ color 40.9703, 39.1917, 32.1934 changes by changing the brightness by 10 percent. The first figure shows a shift by +10% for each color and the second figure -10%.


Similar to the brightness gradients but the following saturation gradients show a change of the XYZ color 40.9703, 39.1917, 32.1934 by changing the saturation by 10% instead.





 40.9703, 39.1917,  
32.1934


 40.9703, 39.1917,  
32.1934


341.2612,  
342.7048, 326.5191

 28.4834, 26.9089,  
21.2432


 75.9138, 73.9311,  
64.2156

 18.8327, 17.5048,  
13.1089


 99.1012, 97.1564,  
86.1247

 11.6528, 10.5951,  
7.3720


126.5861,  
124.7981, 112.5238

 6.5782, 5.7952,  
3.6139


158.7339,  
157.2405, 143.8315

 3.2437, 2.7210,  
1.4160

195.9099,  
194.8679, 180.4664

 1.2839, 0.9879,  
0.1541

238.4796,

 0.1711, 0.0000,

238.0649, 222.8469

0.0000

286.8082,  
287.2157, 271.3917

■ 0.0000, 0.0000,  
0.0000

■ 40.9703, 39.1917,  
32.1934

■ 40.9703, 39.1917,  
32.1934

■ 37.2529, 33.9909,  
24.0669

■ 45.2368, 45.0645,  
41.8166

■ 34.0585, 29.4325,  
17.3589

■ 50.0712, 51.6269,  
53.0045

■ 31.3629, 25.4922,  
11.9875

■ 55.4950, 58.9027,  
65.8238

■ 29.1390, 22.1424,  
7.8617

■ 61.5277, 66.9128,  
80.3368

■ 27.3569, 19.3531,  
4.8785

■ 68.1879, 75.6773,  
96.6022

■ 25.9825, 17.0913,  
2.9186

■ 74.0435, 84.6354,  
107.0415

■ 24.9735, 15.3192,  
1.8245

■ 77.0987, 90.7458,  
108.0599

■ 24.7055, 14.8393,  
1.5621

# Harmonies

## Analogous

The Analogous color harmony consists of three colors that are next to each other on the color wheel.



42.6127, 39.1917, 38.0677



40.9703, 39.1917, 32.1934



38.3776, 39.1917, 29.2851

# Triad

The Triadic color harmony groups three colors that are evenly spaced from another and form a triangle on the color wheel.



40.9703, 39.1917, 32.1934



32.2233, 39.1917, 39.5565



38.9453, 39.1917, 59.0931

# Complementary

The Complementary color scheme is a pair of colors which are on the opposite of each other on the color wheel.



40.9703, 39.1917, 32.1934



38.8030, 43.9625, 59.8666

# Split Complementary

Split-complementary colors differ from the complementary color scheme. The scheme consists of three colors, the original color and two neighbors of the complement color.



36.1458, 39.1917, 59.6227



40.9703, 39.1917, 32.1934



32.3582, 39.1917, 47.6357

# Square

The Square scheme is like the rectangle color scheme, but the four colors are evenly spaced on the color wheel.



40.9703, 39.1917, 32.1934



33.3847, 39.1917, 33.1652



33.7630, 39.1917, 55.2110



41.4038, 39.1917, 53.8439



# Rectangle

The Rectangle color scheme consists of four colors that form a rectangle on the color wheel.



40.9703, 39.1917, 32.1934



36.5010, 39.1917, 29.1434



33.7630, 39.1917, 55.2110



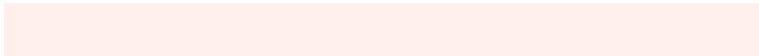
38.0102, 39.1917, 59.8510

# Sweetspot

The Sweet Spot groups the original color and five complimentary colors.



40.9713, 39.1935, 32.1942



87.4483, 89.7764, 91.0142



42.0521, 35.7121, 49.9511



18.4280, 18.8243, 18.8065



0.0000, 0.0000, 0.0000



20.3446, 21.4041, 23.3091



# Same Dimension

The Same Dimension uses a secret algorithm to generate beautiful new colors.



40.9713, 39.1935, 32.1942



68.6747, 63.9988, 48.4719



45.8815, 49.0138, 33.8309



10.8743, 11.1178, 11.1356



16.1301, 9.7774, 1.0371



0.8268, 0.5891, 0.0701

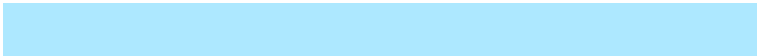


# Inverse Universe

The Inverse Universe completely reimagines the original color for something new.



38.8030, 43.9625, 59.8666



64.2004, 73.8064, 105.4701



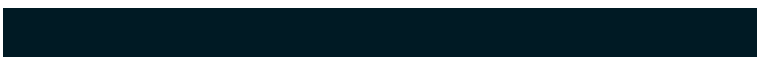
33.9896, 34.3356, 58.2622



10.6832, 11.5404, 13.5819



12.9899, 15.3738, 37.0271

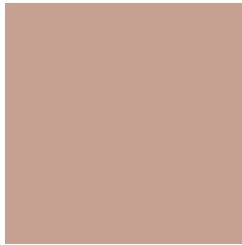


0.6743, 0.8465, 1.7730



# Previews

## White Background



This preview shows how the XYZ color 40.9703, 39.1917, 32.1934 looks on a white background.

## Color Contrast Check

Large Text (above 18pt) WCAG AA × Fail

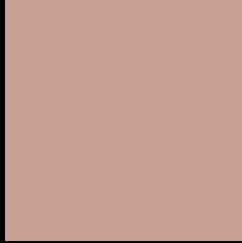
Any Text WCAG AA × Fail

Large Text (above 18pt) WCAG AAA × Fail

Any Text WCAG AAA × Fail



# Black Background



This preview shows how the XYZ color 40.9703, 39.1917, 32.1934 looks on a black background.

## Color Contrast Check

Large Text (above 18pt) WCAG AA ✓ Pass

Any Text WCAG AA ✓ Pass

Large Text (above 18pt) WCAG AAA ✓ Pass

Any Text WCAG AAA ✓ Pass

If you want to check with other color combinations, try the [Color Contrast Checker](#).

**XYZ 40.9703, 39.1917, 32.1934**

## **Background**



This preview shows how black text looks on a background with the XYZ color 40.9703, 39.1917, 32.1934.



This preview shows how white text looks on a background with the XYZ color 40.9703, 39.1917,



# Color Blindness Simulation

Color vision deficiency is a very complex topic, and I could not describe the different causes any better than Wikipedia does, so if you want to learn more, you should check out their [article about color blindness](#).

## Dichromacy



### Original Color

40.9703, 39.1917, 32.1934

### Protanopia

37.3319, 39.4053, 34.0721

### Deuteranopia

40.0235, 39.2225, 32.2493



## Tritanopia

43.3058, 39.3960, 42.8578

# Trichromacy



## Original Color

40.9703, 39.1917, 32.1934

## Protanomaly

38.5676, 39.2387, 33.5581

## Deuteranomaly

40.3614, 39.1362, 32.2148

## Tritanomaly

42.3914, 39.2711, 38.6035

# Monochromacy



## Original Color

40.9703, 39.1917, 32.1934

## Achromatopsia

38.2080, 40.1978, 43.7754

## Achromatomaly

38.8916, 39.5489, 39.3021

# CSS Examples

## Text

The CSS property to change the color of the text to XYZ 40.9703, 39.1917, 32.1934 is called "color". The color property can be set on classes, ids or directly on the HTML element.

This example shows how text in the color `rgb(198, 160, 145)` looks like.

```
.text, #text, p{  
    color:rgb(198, 160, 145)  
}
```

If you want to add a text shadow in that color use the text-shadow property, you can generate a text shadow directly with our [CSS Text Shadow Generator](#).

Here you see how black text with a 4 pixel rgb(198, 160, 145) colored shadow looks like.

```
.shadow{ text-shadow: 4px 4px 2px rgb(198, 160, 145) }
```

## Border

The CSS property to change the border of an element to XYZ 40.9703, 39.1917, 32.1934 is called "border". The border property can be set on classes, ids or directly on the HTML element.

This example shows the color as border, it can be applied via the CSS property "border" or "border-color".

```
.border, #border, table{ border:4px solid rgb(198, 160, 145) }
```



If only the border color should be changed use the property `border-color`.

```
.border{ border-color:rgb(198, 160, 145) }
```

If you want to add a box shadow in that color use:

Here you see how a box with a 4 pixel `rgb(198, 160, 145)` colored shadow looks like.

```
.boxshadow{ -moz-box-shadow:4px 4px 4px  
4px rgb(198, 160, 145); -webkit-box-  
shadow:4px 4px 4px 4px rgb(198, 160, 145);  
box-shadow:4px 4px 4px 4px rgb(198, 160,  
145) }
```

# Background

The CSS property to change the background color of an element to XYZ 40.9703, 39.1917, 32.1934 is called "background". The background property can be set on classes, ids or directly on the HTML element.

```
.background, #background, body{  
background: rgb(198, 160, 145) }
```

If only the background color should be changed can be used:

```
.background{ background-color: rgb(198,  
160, 145) }
```

This example shows the color as background, it is applied via the CSS property "background".

To optimize and compress your CSS code, you can use our [online CSS compressor and optimizer](#) based on csstidy. If you want to create a linear or radial gradient as background or border, check our [CSS Gradient Generator](#).

Hey! You found this booklet interesting? Support Converting Colors with the new Membership Option!

The pro membership hides all ads, plus gives you double the colors in the color bucket, and more awesome pro features!

**[Learn more, Memberships starting at \\$2.50/m!](#)**

**Follow me  
on Twitter!**

@ConvertingColor