

# Converting Colors

XYZ(41.1324, 38.3366, 36.0131)

Have a look what the booklet for  
XYZ(41.1324, 38.3366, 36.0131)  
contains.

<b>XYZ(41.1784, 38.4528, 35.8236)</b> .....	3
<b><i>Conversions</i></b> .....	4
<b><i>Details</i></b> .....	6
<b><i>Harmonies</i></b> .....	12
<b><i>Previews</i></b> .....	24
<b><i>Color Blindness Simulation</i></b> .....	28
<b><i>CSS Examples</i></b> .....	31

# Color

**XYZ(41.1784, 38.4528,  
35.8236)**

# Conversions

## Conversions Part 1

<b>Format</b>	<b>Color</b>
Hex	C69D9A
RGB	198, 157, 154
RGB Percent	78%, 62%, 60%
CMY	0.2235, 0.3843, 0.3961
CMYK	0.00, 0.21, 0.22, 0.22
HSL	4°, 28%, 69%
HSV	4°, 22%, 78%
XYZ	41.1784, 38.4528, 35.8236
YIQ	168.9170, 25.3990, 7.7590

# Conversions

## Conversions Part 2

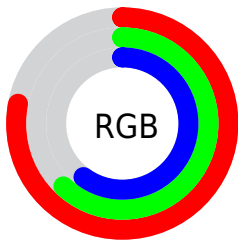
<b>Format</b>	<b>Color</b>
R <sub>Y</sub> B	198, 157, 154
Decimal	13016474
CIE Lab	68.35, 14.75, 7.37
CIE LCh	68, 16.485, 26.541
Yxy	38.4528, 0.3567, 0.3331
Android (android.graphics.Color)	4291206554 (0xFFC69D9A)
YUV	168.9170, -7.3541, 25.5058
Hunter-Lab	62.0103, 10.0161, 9.1552

# Details

The XYZ color **41.1784, 38.4528, 35.8236** is a light color, and the websafe version is hex **CC9999**. A complement of this color would be **43.0341, 49.9760, 60.8046**, and the grayscale version is **37.6983, 39.6616, 43.1914**.

A 20% lighter version of the original color is **76.1686, 72.9010, 69.7313**, and **18.9299, 17.1270, 15.1401** is the 20% darker color. If you saturate the color by 10%, you get **36.7745, 32.0698, 26.8797**, and if you desaturate by 10%, it is **46.3278, 45.8907, 46.3589**.

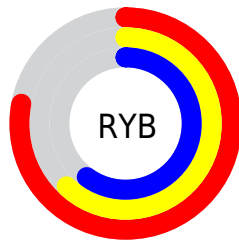
# Distribution



Red (78%)

Green (62%)

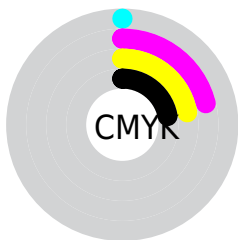
Blue (60%)



Red (78%)

Yellow (62%)

Blue (60%)

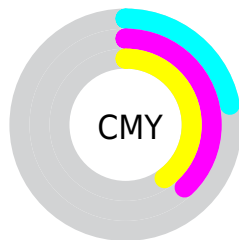


Cyan (0%)

Magenta (21%)

Yellow (22%)

Black (22%)



Cyan (22%)

Magenta (38%)

Yellow (40%)


# Brightness & Saturation Gradients

These gradients show how the XYZ color 41.1784, 38.4528, 35.8236 changes by changing the brightness by 10 percent. The first figure shows a shift by +10% for each color and the second figure -10%.

Similar to the brightness gradients but the following saturation gradients show a change of the XYZ color 41.1784, 38.4528, 35.8236 by changing the saturation by 10% instead.





 41.1784, 38.4528,  
35.8236


 41.1784, 38.4528,  
35.8236


342.1155,  
339.5584, 343.2029

 28.6468, 26.3343,  
24.0094


 76.2276, 72.8016,  
69.9257

 18.9567, 17.0739,  
15.1283

 99.4760, 95.8008,  
93.0506

 11.7428, 10.2872,  
8.7619


127.0273,  
123.1956, 120.7829

 6.6398, 5.5898,  
4.4915

159.2469,  
155.3704, 153.5410

 3.2822, 2.5973,  
1.8987

196.5002,  
192.7097, 191.7435

 1.3047, 0.9253,  
0.4919

239.1525,

 0.1867, 0.0000,

235.5979, 235.8090

0.0000

287.5691,  
284.4193, 286.1560

0.0000, 0.0000,  
0.0000

41.1784, 38.4528,  
35.8236

41.1784, 38.4528,  
35.8236

36.7745, 32.0698,  
26.8797

46.3278, 45.8907,  
46.3589

33.0785, 26.6889,  
19.4476

52.2515, 54.4227,  
58.5551

30.0543, 22.2609,  
13.4443

58.9811, 64.0924,  
72.4805

27.6615, 18.7301,  
8.7783

66.5450, 74.9394,  
88.1991

25.8552, 16.0352,  
5.3469

74.9705, 87.0015,  
105.7712

■ 24.5845, 14.1071,  
3.0330

■ 77.0988, 90.7458,  
108.0599

■ 23.7900, 12.8657,  
1.6965

■ 23.4394, 12.3071,  
1.1401

# Harmonies

## Analogous

The Analogous color harmony consists of three colors that are next to each other on the color wheel.



41.7384, 38.4528, 42.7334



41.1784, 38.4528, 35.8236



39.3582, 38.4528, 31.0785

# Triad

The Triadic color harmony groups three colors that are evenly spaced from another and form a triangle on the color wheel.



41.1784, 38.4528, 35.8236



32.5557, 38.4528, 34.4993



36.2491, 38.4528, 57.7484

# Complementary

The Complementary color scheme is a pair of colors which are on the opposite of each other on the color wheel.



41.1784, 38.4528, 35.8236



43.0341, 49.9760, 60.8046

# Split Complementary

Split-complementary colors differ from the complementary color scheme. The scheme consists of three colors, the original color and two neighbors of the complement color.



33.8753, 38.4528, 54.9050



41.1784, 38.4528, 35.8236



31.8072, 38.4528, 41.0154

# Square

The Square scheme is like the rectangle color scheme, but the four colors are evenly spaced on the color wheel.



41.1784, 38.4528, 35.8236



34.3716, 38.4528, 30.3796



32.2788, 38.4528, 48.5579



38.8149, 38.4528, 55.9406



# Rectangle

The Rectangle color scheme consists of four colors that form a rectangle on the color wheel.



41.1784, 38.4528, 35.8236



37.7175, 38.4528, 29.4926



32.2788, 38.4528, 48.5579



35.4033, 38.4528, 57.2972

# Sweetspot

The Sweet Spot groups the original color and five complimentary colors.



41.1794, 38.4546, 35.8244



87.2300, 88.7471, 92.7681



44.7025, 39.0605, 56.8529



18.5336, 18.7979, 19.5738



0.0000, 0.0000, 0.0000



20.3446, 21.4041, 23.3091



# Same Dimension

The Same Dimension uses a secret algorithm to generate beautiful new colors.



41.1794, 38.4546, 35.8244



68.7171, 62.0079, 54.8850



45.2285, 46.5527, 37.1741



10.6911, 10.7513, 11.0745



15.2665, 8.0503, 0.7492



0.7436, 0.4226, 0.0424



# Inverse Universe

The Inverse Universe completely reimagines the original color for something new.



43.0341, 49.9760, 60.8046



72.6149, 86.2354, 107.4256



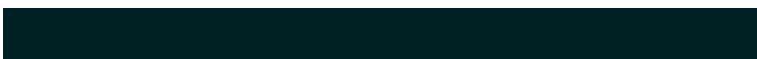
38.4762, 40.8604, 59.2853



10.8823, 11.9388, 13.6483



17.8665, 25.1269, 38.6527

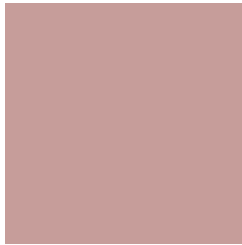


0.8651, 1.2279, 1.8366



# Previews

## White Background



This preview shows how the XYZ color 41.1784, 38.4528, 35.8236 looks on a white background.

## Color Contrast Check

Large Text (above 18pt) WCAG AA × Fail

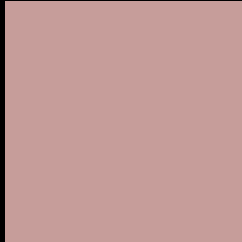
Any Text WCAG AA × Fail

Large Text (above 18pt) WCAG AAA × Fail

Any Text WCAG AAA × Fail



# Black Background



This preview shows how the XYZ color 41.1784, 38.4528, 35.8236 looks on a black background.

## Color Contrast Check

Large Text (above 18pt) WCAG AA ✓ Pass

Any Text WCAG AA ✓ Pass

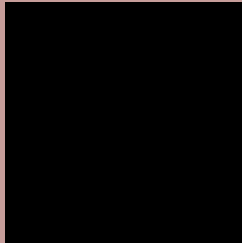
Large Text (above 18pt) WCAG AAA ✓ Pass

Any Text WCAG AAA ✓ Pass

If you want to check with other color combinations, try the [Color Contrast Checker](#).

**XYZ 41.1784, 38.4528, 35.8236**

## **Background**



This preview shows how black text looks on a background with the XYZ color 41.1784, 38.4528, 35.8236.



This preview shows how white text looks on a background with the XYZ color 41.1784, 38.4528,

35.8236.

# Color Blindness Simulation

Color vision deficiency is a very complex topic, and I could not describe the different causes any better than Wikipedia does, so if you want to learn more, you should check out their [article about color blindness](#).

## Dichromacy



### Original Color

41.1784, 38.4528, 35.8236

### Protanopia

36.9075, 38.5463, 38.2958

### Deuteranopia

39.2337, 38.4810, 35.4967



## Tritanopia

42.5158, 38.5121, 41.7520

# Trichromacy



## Original Color

41.1784, 38.4528, 35.8236

## Protanomaly

38.2391, 38.4525, 37.3049

## Deuteranomaly

40.0588, 38.6480, 35.4855

## Tritanomaly

41.9632, 38.5277, 39.4073

# Monochromacy



## Original Color

41.1784, 38.4528, 35.8236

## Achromatopsia

37.7116, 39.6755, 43.2066

## Achromatomaly

38.9784, 39.2939, 40.6521

# CSS Examples

## Text

The CSS property to change the color of the text to XYZ 41.1784, 38.4528, 35.8236 is called "color". The color property can be set on classes, ids or directly on the HTML element.

This example shows how text in the color `rgb(198, 157, 154)` looks like.

```
.text, #text, p{  
    color:rgb(198, 157, 154)  
}
```

If you want to add a text shadow in that color use the text-shadow property, you can generate a text shadow directly with our [CSS Text Shadow Generator](#).

Here you see how black text with a 4 pixel rgb(198, 157, 154) colored shadow looks like.

```
.shadow{ text-shadow: 4px 4px 2px rgb(198, 157, 154) }
```

## Border

The CSS property to change the border of an element to XYZ 41.1784, 38.4528, 35.8236 is called "border". The border property can be set on classes, ids or directly on the HTML element.

This example shows the color as border, it can be applied via the CSS property "border" or "border-color".

```
.border, #border, table{ border:4px solid rgb(198, 157, 154) }
```



If only the border color should be changed use the property `border-color`.

```
.border{ border-color:rgb(198, 157, 154) }
```

If you want to add a box shadow in that color use:

Here you see how a box with a 4 pixel `rgb(198, 157, 154)` colored shadow looks like.

```
.boxshadow{ -moz-box-shadow:4px 4px 4px  
4px rgb(198, 157, 154); -webkit-box-  
shadow:4px 4px 4px 4px rgb(198, 157, 154);  
box-shadow:4px 4px 4px 4px rgb(198, 157,  
154) }
```

# Background

The CSS property to change the background color of an element to XYZ 41.1784, 38.4528, 35.8236 is called "background". The background property can be set on classes, ids or directly on the HTML element.

```
.background, #background, body{  
background: rgb(198, 157, 154) }
```

If only the background color should be changed can be used:

```
.background{ background-color: rgb(198,  
157, 154) }
```

This example shows the color as background, it is applied via the CSS property "background".

To optimize and compress your CSS code, you can use our [online CSS compressor and optimizer](#) based on csstidy. If you want to create a linear or radial gradient as background or border, check our [CSS Gradient Generator](#).

Hey! You found this booklet interesting? Support Converting Colors with the new Membership Option!

The pro membership hides all ads, plus gives you double the colors in the color bucket, and more awesome pro features!

**[Learn more, Memberships starting at \\$2.50/m!](#)**

**Follow me  
on Twitter!**

@ConvertingColor