

Converting Colors

XYZ(41.1842, 40.2549, 36.6097)

Have a look what the booklet for
XYZ(41.1842, 40.2549, 36.6097)
contains.

XYZ(41.1842, 40.2549, 36.6097)	3
<i>Conversions</i>	4
<i>Details</i>	6
<i>Harmonies</i>	12
<i>Previews</i>	24
<i>Color Blindness Simulation</i>	28
<i>CSS Examples</i>	31

Color

**XYZ(41.1842, 40.2549,
36.6097)**

Conversions

Conversions Part 1

Format	Color
Hex	C1A49B
RGB	193, 164, 155
RGB Percent	76%, 64%, 61%
CMY	0.2431, 0.3568, 0.3922
CMYK	0.00, 0.15, 0.20, 0.24
HSL	14°, 23%, 68%
HSV	14°, 20%, 76%
XYZ	41.1842, 40.2549, 36.6097
YIQ	171.6450, 20.1730, 3.3490

Conversions

Conversions Part 2

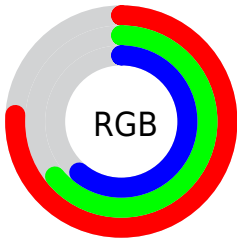
Format	Color
RYB	193, 167, 155
Decimal	12690587
CIELab	69.65, 9.17, 8.60
CIELCh	70, 12.574, 43.159
Yxy	40.2549, 0.3489, 0.3410
Android (android.graphics.Color)	4290880667 (0xFFC1A49B)
YUV	171.6450, -8.2060, 18.7283
Hunter-Lab	63.4467, 4.8351, 10.2015

Details

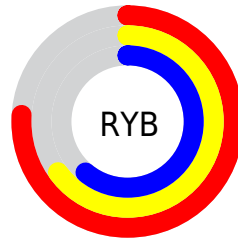
The XYZ color **41.1842, 40.2549, 36.6097** is a light color, and the websafe version is hex **CC9999**. A complement of this color would be **40.2835, 45.0989, 57.0343**, and the grayscale version is **39.0672, 41.1017, 44.7598**.

A 20% lighter version of the original color is **76.2645, 75.5905, 70.8925**, and **18.9403, 18.0768, 15.5876** is the 20% darker color. If you saturate the color by 10%, you get **37.2066, 34.6894, 27.9161**, and if you desaturate by 10%, it is **45.7283, 46.5381, 46.7712**.

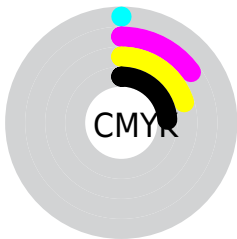
Distribution



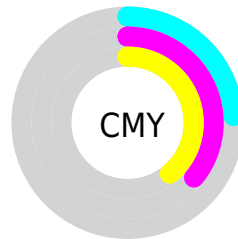
- Red (76%)
- Green (64%)
- Blue (61%)



- Red (76%)
- Yellow (65%)
- Blue (61%)



- Cyan (0%)
- Magenta (15%)
- Yellow (20%)
- Black (24%)





- Cyan (24%)
- Magenta (36%)
- Yellow (39%)

Brightness & Saturation Gradients


These gradients show how the XYZ color 41.1842, 40.2549, 36.6097 changes by changing the brightness by 10 percent. The first figure shows a shift by +10% for each color and the second figure -10%.


Similar to the brightness gradients but the following saturation gradients show a change of the XYZ color 41.1842, 40.2549, 36.6097 by changing the saturation by 10% instead.


 41.1842, 40.2549,
36.6097


 41.1842, 40.2549,
36.6097


342.1393,
347.1968, 346.7353

 28.6513, 27.7373,
24.6120


 76.2364, 75.5515,
71.1517

 18.9602, 18.1278,
15.5719


 99.4864, 99.0994,
94.5331

 11.7453, 11.0417,
9.0706


127.0396,
127.0927, 122.5462

 6.6415, 6.0949,
4.6898

159.2612,
159.9161, 155.6094

 3.2832, 2.9029,
2.0109

196.5166,
197.9538, 194.1414

 1.3053, 1.0812,
0.5620

239.1712,

 0.1872, 0.0000,

241.5902, 238.5607

0.0000

287.5903,
291.2097, 289.2858

■ 0.0000, 0.0000,
0.0000

■ 41.1842, 40.2549,
36.6097

■ 41.1842, 40.2549,
36.6097

■ 37.2066, 34.6894,
27.9161

■ 45.7283, 46.5381,
46.7712

■ 33.7696, 29.8105,
20.6198

■ 50.8570, 53.5579,
58.4618

■ 30.8501, 25.5929,
14.6479

■ 56.5916, 61.3393,
71.7422

■ 28.4218, 22.0074,
9.9202

■ 62.9513, 69.9044,
86.6692

■ 26.4563, 19.0228,
6.3475

■ 69.9544, 79.2744,
103.2965

■ 24.9218, 16.6049,
3.8285

■ 74.9686, 88.4098,
107.7213

■ 23.7820, 14.7160,
2.2442

■ 75.8025, 90.0776,
107.9992

■ 22.9801, 13.3075,
1.3747

■ 22.9589, 13.2704,
1.3514

Harmonies

Analogous

The Analogous color harmony consists of three colors that are next to each other on the color wheel.



42.1954, 40.2549, 41.3310



41.1842, 40.2549, 36.6097



39.4049, 40.2549, 33.9644

Triad

The Triadic color harmony groups three colors that are evenly spaced from another and form a triangle on the color wheel.



41.1842, 40.2549, 36.6097



34.6400, 40.2549, 40.6665



39.1580, 40.2549, 55.6617

Complementary

The Complementary color scheme is a pair of colors which are on the opposite of each other on the color wheel.



41.1842, 40.2549, 36.6097



40.2835, 45.0989, 57.0343

Split Complementary

Split-complementary colors differ from the complementary color scheme. The scheme consists of three colors, the original color and two neighbors of the complement color.



37.1396, 40.2549, 55.4437



41.1842, 40.2549, 36.6097



34.5792, 40.2549, 46.4293

Square

The Square scheme is like the rectangle color scheme, but the four colors are evenly spaced on the color wheel.



41.1842, 40.2549, 36.6097



35.6488, 40.2549, 36.1605



35.4796, 40.2549, 51.9439



40.9980, 40.2549, 52.5155

Rectangle

The Rectangle color scheme consists of four colors that form a rectangle on the color wheel.



41.1842, 40.2549, 36.6097



38.0460, 40.2549, 33.5752



35.4796, 40.2549, 51.9439



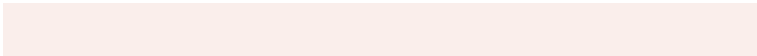
38.4769, 40.2549, 55.9871

Sweetspot

The Sweet Spot groups the original color and five complimentary colors.



41.1853, 40.2567, 36.6105



85.0786, 87.7147, 90.9726



42.3799, 38.2470, 50.5699



18.1254, 18.6438, 19.2284



92.9021, 97.7402, 106.4391



19.4759, 20.4902, 22.3138

Same Dimension

The Same Dimension uses a secret algorithm to generate beautiful new colors.



41.1853, 40.2567, 36.6105



70.2993, 67.2695, 57.9508



44.8152, 47.5165, 37.8205



10.2626, 10.4567, 10.5393



15.3226, 8.9310, 0.9163



0.7173, 0.4963, 0.0580

Inverse Universe

The Inverse Universe completely reimagines the original color for something new.



40.2835, 45.0989, 57.0343



68.3621, 77.6456, 101.7443



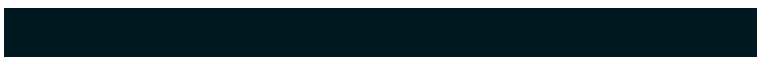
36.6229, 37.7778, 55.8141



10.1598, 11.0108, 12.8747



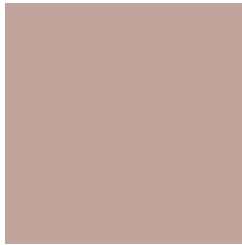
13.4340, 16.6245, 36.0574



0.6306, 0.8186, 1.5747

Previews

White Background



This preview shows how the XYZ color 41.1842, 40.2549, 36.6097 looks on a white background.

Color Contrast Check

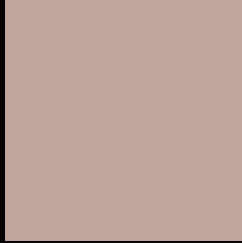
Large Text (above 18pt) WCAG AA × Fail

Any Text WCAG AA × Fail

Large Text (above 18pt) WCAG AAA × Fail

Any Text WCAG AAA × Fail

Black Background



This preview shows how the XYZ color 41.1842, 40.2549, 36.6097 looks on a black background.

Color Contrast Check

Large Text (above 18pt) WCAG AA ✓ Pass

Any Text WCAG AA ✓ Pass

Large Text (above 18pt) WCAG AAA ✓ Pass

Any Text WCAG AAA ✓ Pass

If you want to check with other color combinations, try the [Color Contrast Checker](#).

XYZ 41.1842, 40.2549, 36.6097

Background



This preview shows how black text looks on a background with the XYZ color 41.1842, 40.2549, 36.6097.



This preview shows how white text looks on a background with the XYZ color 41.1842, 40.2549,

Color Blindness Simulation

Color vision deficiency is a very complex topic, and I could not describe the different causes any better than Wikipedia does, so if you want to learn more, you should check out their [article about color blindness](#).

Dichromacy



Original Color

41.1842, 40.2549, 36.6097

Protanopia

38.4508, 40.4482, 38.1285

Deuteranopia

40.9301, 40.1239, 36.5978



Tritanopia

42.8905, 40.1478, 45.5331

Trichromacy



Original Color

41.1842, 40.2549, 36.6097

Protanomaly

39.3798, 40.3847, 37.6178

Deuteranomaly

40.9301, 40.1239, 36.5978

Tritanomaly

42.1435, 40.1000, 42.0781

Monochromacy



Original Color

41.1842, 40.2549, 36.6097

Achromatopsia

39.2122, 41.2543, 44.9259

Achromatomaly

39.8933, 40.8324, 41.8552

CSS Examples

Text

The CSS property to change the color of the text to XYZ 41.1842, 40.2549, 36.6097 is called "color". The color property can be set on classes, ids or directly on the HTML element.

This example shows how text in the color `rgb(193, 164, 155)` looks like.

```
.text, #text, p{  
    color:rgb(193, 164, 155)  
}
```

If you want to add a text shadow in that color use the text-shadow property, you can generate a text shadow directly with our [CSS Text Shadow Generator](#).

Here you see how black text with a 4 pixel rgb(193, 164, 155) colored shadow looks like.

```
.shadow{ text-shadow: 4px 4px 2px rgb(193, 164, 155) }
```

Border

The CSS property to change the border of an element to XYZ 41.1842, 40.2549, 36.6097 is called "border". The border property can be set on classes, ids or directly on the HTML element.

This example shows the color as border, it can be applied via the CSS property "border" or "border-color".

```
.border, #border, table{ border:4px solid rgb(193, 164, 155) }
```


If only the border color should be changed use the property `border-color`.

```
.border{ border-color:rgb(193, 164, 155) }
```

If you want to add a box shadow in that color use:

Here you see how a box with a 4 pixel `rgb(193, 164, 155)` colored shadow looks like.

```
.boxshadow{ -moz-box-shadow:4px 4px 4px  
4px rgb(193, 164, 155); -webkit-box-  
shadow:4px 4px 4px 4px rgb(193, 164, 155);  
box-shadow:4px 4px 4px 4px rgb(193, 164,  
155) }
```

Background

The CSS property to change the background color of an element to XYZ 41.1842, 40.2549, 36.6097 is called "background". The background property can be set on classes, ids or directly on the HTML element.

```
.background, #background, body{  
background: rgb(193, 164, 155) }
```

If only the background color should be changed can be used:

```
.background{ background-color: rgb(193,  
164, 155) }
```

This example shows the color as background, it is applied via the CSS property "background".

To optimize and compress your CSS code, you can use our [online CSS compressor and optimizer](#) based on csstidy. If you want to create a linear or radial gradient as background or border, check our [CSS Gradient Generator](#).

Hey! You found this booklet interesting? Support Converting Colors with the new Membership Option!

The pro membership hides all ads, plus gives you double the colors in the color bucket, and more awesome pro features!

[Learn more, Memberships starting at \\$2.50/m!](#)

**Follow me
on Twitter!**

@ConvertingColor