

Converting Colors

XYZ(41.1923, 24.2624, 18.6564)

Have a look what the booklet for
XYZ(41.1923, 24.2624, 18.6564)
contains.

XYZ(41.2829, 24.2695, 18.7283)	3
<i>Conversions</i>	4
<i>Details</i>	6
<i>Harmonies</i>	12
<i>Previews</i>	24
<i>Color Blindness Simulation</i>	28
<i>CSS Examples</i>	31

Color

**XYZ(41.2829, 24.2695,
18.7283)**

Conversions

Conversions Part 1

Format	Color
Hex	F04773
RGB	240, 71, 115
RGB Percent	94%, 28%, 45%
CMY	0.0588, 0.7215, 0.5490
CMYK	0.00, 0.70, 0.52, 0.06
HSL	344°, 85%, 61%
HSV	344°, 70%, 94%
XYZ	41.2829, 24.2695, 18.7283
YIQ	126.5470, 86.6000, 49.5120

Conversions

Conversions Part 2

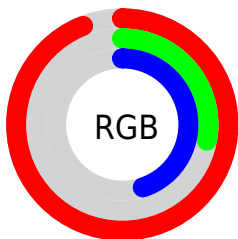
Format	Color
R_{YB}	240, 71, 115
Decimal	15746931
CIE _{Lab}	56.36, 66.78, 13.53
CIE _{LCh}	56, 68.132, 11.451
Yxy	24.2695, 0.4898, 0.2880
Android (android.graphics.Color)	4293937011 (0xFFFF04773)
YUV	126.5470, -5.6927, 99.4983
Hunter-Lab	49.2641, 63.3694, 11.9451

Details

The XYZ color **41.2829, 24.2695, 18.7283** is a dark color, and the websafe version is hex **CC3366**. The color can be described as middle washed rose. A complement of this color would be **43.7242, 67.6459, 62.9830**, and the grayscale version is **20.0172, 21.0596, 22.9339**.

A 20% lighter version of the original color is **56.1977, 40.0153, 41.3210**, and **19.3732, 9.8702, 6.1943** is the 20% darker color. If you saturate the color by 10%, you get **39.1212, 21.4268, 13.4439**, and if you desaturate by 10%, it is **44.2448, 28.3982, 25.2504**.

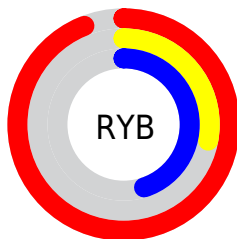
Distribution



Red (94%)

Green (28%)

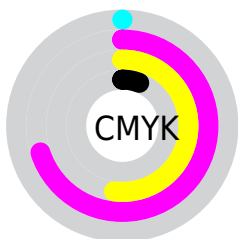
Blue (45%)



Red (94%)

Yellow (28%)

Blue (45%)

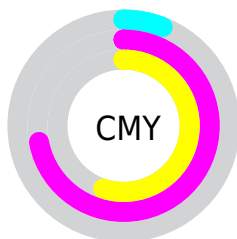


Cyan (0%)

Magenta (70%)

Yellow (52%)

Black (6%)



Cyan (6%)

Magenta (72%)

Yellow (55%)

Brightness & Saturation Gradients

These gradients show how the XYZ color 41.2829, 24.2695, 18.7283 changes by changing the brightness by 10 percent. The first figure shows a shift by +10% for each color and the second figure -10%.

Similar to the brightness gradients but the following saturation gradients show a change of the XYZ color 41.2829, 24.2695, 18.7283 by changing the saturation by 10% instead.

41.2829, 24.2695,
18.7283

41.2829, 24.2695,
18.7283

342.5440,
274.1802, 257.3172

28.7288, 15.5337,
11.2993

76.3852, 50.4696,
42.1050

19.0190, 9.1948,
6.1518

99.6641, 68.7027,
58.8899

11.7881, 4.8684,
2.8673

127.2487, 90.8703,
79.6304

6.6707, 2.1703,
1.0273

159.5043,
117.3568, 104.7451

3.3015, 0.7037,
0.0000

196.7963,
148.5467, 134.6527

1.3152, 0.0000,
0.0000

239.4900,

0.1945, 0.0000,

184.8243, 169.7715

0.0000

287.9508,
226.5740, 210.5202

■ 0.0000, 0.0000,
0.0000

■ 41.2829, 24.2695,
18.7283

■ 41.2829, 24.2695,
18.7283

■ 39.1212, 21.4268,
13.4439

■ 44.2448, 28.3982,
25.2504

■ 37.6710, 19.7102,
9.3110


■ 48.0790, 33.9398,
33.0851


■ 36.8176, 18.8782,
6.3294

■ 52.8511, 41.0101,
42.3022

■ 58.6198, 49.7122,
52.9661

■ 65.4389, 60.1398,
65.1370

 73.3582, 72.3795,
78.8716

 82.4243, 86.5123,
94.2235

 89.7450, 97.2652,
108.6517

Harmonies

Analogous

The Analogous color harmony consists of three colors that are next to each other on the color wheel.



40.5729, 24.2695, 42.7301



41.2829, 24.2695, 18.7283



36.3550, 24.2695, 6.8777

Triad

The Triadic color harmony groups three colors that are evenly spaced from another and form a triangle on the color wheel.



41.2829, 24.2695, 18.7283



14.4374, 24.2695, 5.4453



18.5847, 24.2695, 92.3923

Complementary

The Complementary color scheme is a pair of colors which are on the opposite of each other on the color wheel.



41.2829, 24.2695, 18.7283



43.7242, 67.6459, 62.9830

Split Complementary

Split-complementary colors differ from the complementary color scheme. The scheme consists of three colors, the original color and two neighbors of the complement color.



13.4905, 24.2695, 66.6965



41.2829, 24.2695, 18.7283



11.4986, 24.2695, 14.9065

Square

The Square scheme is like the rectangle color scheme, but the four colors are evenly spaced on the color wheel.



41.2829, 24.2695, 18.7283



20.1945, 24.2695, 2.6523



11.1967, 24.2695, 35.9863



26.2007, 24.2695, 95.6254

Rectangle

The Rectangle color scheme consists of four colors that form a rectangle on the color wheel.



41.2829, 24.2695, 18.7283



31.0729, 24.2695, 3.7214



11.1967, 24.2695, 35.9863



16.5706, 24.2695, 85.6189

Sweetspot

The Sweet Spot groups the original color and five complimentary colors.



41.2835, 24.2709, 18.7287



74.5476, 68.1698, 73.7818



40.4712, 22.3927, 84.6269



15.4705, 13.8459, 14.9332



0.0000, 0.0000, 0.0000



20.3446, 21.4041, 23.3091

Same Dimension

The Same Dimension uses a secret algorithm to generate beautiful new colors.



41.2835, 24.2709, 18.7287



44.1632, 23.6869, 13.4460



42.6964, 30.2277, 9.5473



15.9417, 15.8264, 17.2491



20.2007, 10.3527, 3.7076



1.7199, 0.8770, 0.5159

Inverse Universe

The Inverse Universe completely reimagines the original color for something new.



41.2835, 24.2709, 18.7287



44.1632, 23.6869, 13.4460



39.1137, 49.2038, 89.8735



15.9417, 15.8264, 17.2491



20.2007, 10.3527, 3.7076



1.7199, 0.8770, 0.5159

Previews

White Background



This preview shows how the XYZ color 41.2829, 24.2695, 18.7283 looks on a white background.

Color Contrast Check

Large Text (above 18pt) WCAG AA ✓ Pass

Any Text WCAG AA × Fail

Large Text (above 18pt) WCAG AAA × Fail

Any Text WCAG AAA × Fail

Black Background



This preview shows how the XYZ color 41.2829, 24.2695, 18.7283 looks on a black background.

Color Contrast Check

Large Text (above 18pt) WCAG AA ✓ Pass

Any Text WCAG AA ✓ Pass

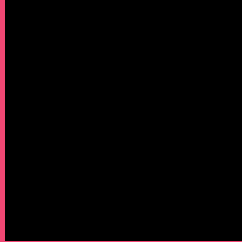
Large Text (above 18pt) WCAG AAA ✓ Pass

Any Text WCAG AAA × Fail

If you want to check with other color combinations, try the [Color Contrast Checker](#).

XYZ 41.2829, 24.2695, 18.7283

Background



This preview shows how black text looks on a background with the XYZ color 41.2829, 24.2695, 18.7283.



This preview shows how white text looks on a background with the XYZ color 41.2829, 24.2695,

Color Blindness Simulation

Color vision deficiency is a very complex topic, and I could not describe the different causes any better than Wikipedia does, so if you want to learn more, you should check out their [article about color blindness](#).

Dichromacy



Original Color

41.2829, 24.2695, 18.7283

Protanopia

23.8408, 24.5344, 31.4960

Deuteranopia

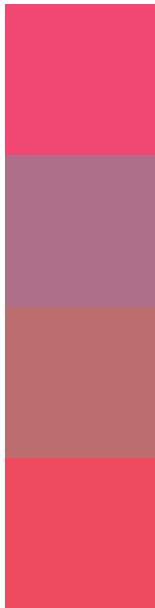
24.7370, 24.2959, 17.2957



Tritanopia

39.5073, 24.2351, 10.5782

Trichromacy



Original Color

41.2829, 24.2695, 18.7283

Protanomaly

27.4717, 22.2502, 26.1393

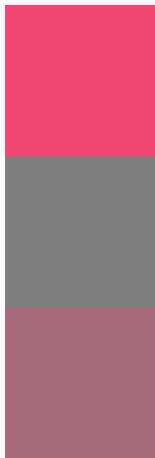
Deuteranomaly

29.0221, 22.7544, 17.6143

Tritanomaly

40.1331, 24.1910, 13.1438

Monochromacy



Original Color

41.2829, 24.2695, 18.7283

Achromatopsia

20.1725, 21.2231, 23.1119

Achromatomaly

24.9813, 20.2703, 21.3348

CSS Examples

Text

The CSS property to change the color of the text to XYZ 41.2829, 24.2695, 18.7283 is called "color". The color property can be set on classes, ids or directly on the HTML element.

This example shows how text in the color `rgb(240, 71, 115)` looks like.

```
.text, #text, p{  
    color:rgb(240, 71, 115)  
}
```

If you want to add a text shadow in that color use the text-shadow property, you can generate a text shadow directly with our [CSS Text Shadow Generator](#).

Here you see how black text with a 4 pixel rgb(240, 71, 115) colored shadow looks like.

```
.shadow{ text-shadow: 4px 4px 2px rgb(240, 71, 115) }
```

Border

The CSS property to change the border of an element to XYZ 41.2829, 24.2695, 18.7283 is called "border". The border property can be set on classes, ids or directly on the HTML element.

This example shows the color as border, it can be applied via the CSS property "border" or "border-color".

```
.border, #border, table{ border:4px solid rgb(240, 71, 115) }
```


If only the border color should be changed use the property `border-color`.

```
.border{ border-color:rgb(240, 71, 115) }
```

If you want to add a box shadow in that color use:

Here you see how a box with a 4 pixel `rgb(240, 71, 115)` colored shadow looks like.

```
.boxshadow{ -moz-box-shadow:4px 4px 4px  
4px rgb(240, 71, 115); -webkit-box-  
shadow:4px 4px 4px 4px rgb(240, 71, 115);  
box-shadow:4px 4px 4px 4px rgb(240, 71,  
115) }
```

Background

The CSS property to change the background color of an element to XYZ 41.2829, 24.2695, 18.7283 is called "background". The background property can be set on classes, ids or directly on the HTML element.

```
.background, #background, body{  
background: rgb(240, 71, 115) }
```

If only the background color should be changed can be used:

```
.background{ background-color: rgb(240, 71,  
115) }
```

This example shows the color as background, it is applied via the CSS property "background".

To optimize and compress your CSS code, you can use our [online CSS compressor and optimizer](#) based on csstidy. If you want to create a linear or radial gradient as background or border, check our [CSS Gradient Generator](#).

Hey! You found this booklet interesting? Support Converting Colors with the new Membership Option!

The pro membership hides all ads, plus gives you double the colors in the color bucket, and more awesome pro features!

[Learn more, Memberships starting at \\$2.50/m!](#)

**Follow me
on Twitter!**

@ConvertingColor