

Converting Colors

XYZ(41.2288, 39.5724, 40.4588)

Have a look what the booklet for
XYZ(41.2288, 39.5724, 40.4588)
contains.

XYZ(41.3594, 39.7275, 40.6103)	3
<i>Conversions</i>	4
<i>Details</i>	6
<i>Harmonies</i>	12
<i>Previews</i>	24
<i>Color Blindness Simulation</i>	28
<i>CSS Examples</i>	31

Color

**XYZ(41.3594, 39.7275,
40.6103)**

Conversions

Conversions Part 1

Format	Color
Hex	C0A2A4
RGB	192, 162, 164
RGB Percent	75%, 64%, 64%
CMY	0.2471, 0.3647, 0.3569
CMYK	0.00, 0.16, 0.15, 0.25
HSL	356°, 19%, 69%
HSV	356°, 16%, 75%
XYZ	41.3594, 39.7275, 40.6103
YIQ	171.1980, 17.2380, 6.9820

Conversions

Conversions Part 2

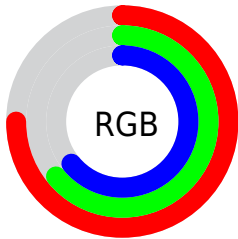
Format	Color
RYB	192, 162, 164
Decimal	12624548
CIELab	69.28, 11.33, 3.06
CIElCh	69, 11.734, 15.124
Yxy	39.7275, 0.3399, 0.3264
Android (android.graphics.Color)	4290814628 (0xFFC0A2A4)
YUV	171.1980, -3.5486, 18.2434
Hunter-Lab	63.0298, 6.8276, 5.9201

Details

The XYZ color **41.3594, 39.7275, 40.6103** is a light color, and the websafe version is hex **CC9999**. A complement of this color would be **43.0457, 49.0993, 55.9259**, and the grayscale version is **38.8203, 40.8420, 44.4769**.

A 20% lighter version of the original color is **76.6660, 74.8799, 77.4304**, and **18.9818, 17.7250, 17.7500** is the 20% darker color. If you saturate the color by 10%, you get **36.7260, 32.8707, 31.6354**, and if you desaturate by 10%, it is **46.7395, 47.7119, 50.9604**.

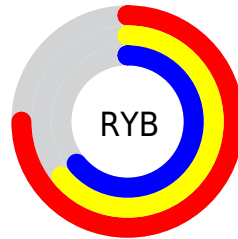
Distribution



Red (75%)

Green (64%)

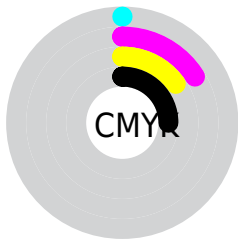
Blue (64%)



Red (75%)

Yellow (64%)

Blue (64%)

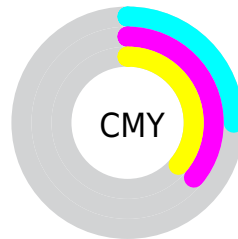


Cyan (0%)

Magenta (16%)

Yellow (15%)

Black (25%)



Cyan (25%)


Magenta (36%)


Yellow (36%)

Brightness & Saturation Gradients


These gradients show how the XYZ color 41.3594, 39.7275, 40.6103 changes by changing the brightness by 10 percent. The first figure shows a shift by +10% for each color and the second figure -10%.


Similar to the brightness gradients but the following saturation gradients show a change of the XYZ color 41.3594, 39.7275, 40.6103 by changing the saturation by 10% instead.


 41.3594, 39.7275,
40.6103


 41.3594, 39.7275,
40.6103


342.8575,
344.9737, 364.3175

 28.7889, 27.3261,
27.6973

 76.5004, 74.7484,
77.3392

 19.0647, 17.8183,
17.8606


 99.8017, 98.1367,
101.9922

 11.8213, 10.8196,
10.6815


127.4107,
125.9561, 131.3956

 6.6935, 5.9457,
5.7416

159.6926,
158.5910, 165.9679

 3.3158, 2.8121,
2.6224

197.0129,
196.4259, 206.1277

 1.3229, 1.0344,
0.9040

239.7369,

 0.2002, 0.0000,

239.8450, 252.2936

0.0000

288.2300,
289.2328, 304.8840

■ 0.0000, 0.0000,
0.0000

■ 41.3594, 39.7275,
40.6103

■ 41.3594, 39.7275,
40.6103

■ 36.7260, 32.8707,
31.6354

■ 46.7395, 47.7119,
50.9604

■ 32.8032, 27.0856,
23.9754

■ 52.8938, 56.8658,
62.7374

■ 29.5568, 22.3197,
17.5693

■ 59.8525, 67.2356,
75.9936

■ 26.9485, 18.5140,
12.3502

■ 67.6431, 78.8636,
90.7779

■ 24.9361, 15.6032,
8.2452

■ 75.3257, 89.8575,
106.8146

■ 23.4724, 13.5141,
5.1731

■ 75.5484, 89.9465,
107.9873

■ 22.5030, 12.1619,
3.0417

■ 21.9615, 11.4417,
1.7423

■ 21.8096, 11.2350,
1.3924

Harmonies

Analogous

The Analogous color harmony consists of three colors that are next to each other on the color wheel.



41.3637, 39.7275, 45.9701



41.3594, 39.7275, 40.6103



40.3692, 39.7275, 36.3248

Triad

The Triadic color harmony groups three colors that are evenly spaced from another and form a triangle on the color wheel.



41.3594, 39.7275, 40.6103



35.2548, 39.7275, 36.3530



36.8390, 39.7275, 54.0577

Complementary

The Complementary color scheme is a pair of colors which are on the opposite of each other on the color wheel.



41.3594, 39.7275, 40.6103



43.0457, 49.0993, 55.9259

Split Complementary

Split-complementary colors differ from the complementary color scheme. The scheme consists of three colors, the original color and two neighbors of the complement color.



35.2654, 39.7275, 51.0183



41.3594, 39.7275, 40.6103



34.3716, 39.7275, 40.6518

Square

The Square scheme is like the rectangle color scheme, but the four colors are evenly spaced on the color wheel.



41.3594, 39.7275, 40.6103



36.8241, 39.7275, 34.0092



34.3754, 39.7275, 46.0152



38.7112, 39.7275, 54.0443

Rectangle

The Rectangle color scheme consists of four colors that form a rectangle on the color wheel.



41.3594, 39.7275, 40.6103



39.3015, 39.7275, 34.5248



34.3754, 39.7275, 46.0152



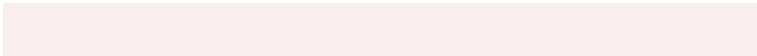
36.2590, 39.7275, 53.3487

Sweetspot

The Sweet Spot groups the original color and five complimentary colors.



41.3605, 39.7293, 40.6111



85.2575, 87.2957, 93.4275



43.6711, 40.5954, 55.4035



18.1315, 18.4915, 19.7382



92.9021, 97.7402, 106.4391



19.4759, 20.4902, 22.3138

Same Dimension

The Same Dimension uses a secret algorithm to generate beautiful new colors.



41.3605, 39.7293, 40.6111



71.6970, 67.1793, 67.3129



43.5909, 44.4765, 40.4720



10.0998, 10.0885, 10.6160



14.6861, 7.5642, 0.9933



0.6441, 0.3306, 0.0932

Inverse Universe

The Inverse Universe completely reimagines the original color for something new.



41.3605, 39.7293, 40.6111



71.6970, 67.1793, 67.3129



40.5363, 43.7288, 56.1735



10.0998, 10.0885, 10.6160



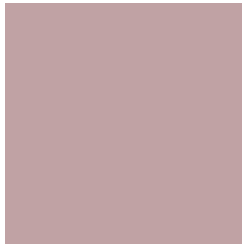
14.6861, 7.5642, 0.9933



0.6441, 0.3306, 0.0932

Previews

White Background



This preview shows how the XYZ color 41.3594, 39.7275, 40.6103 looks on a white background.

Color Contrast Check

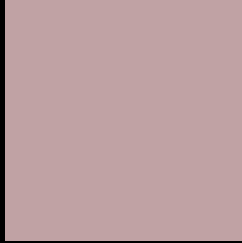
Large Text (above 18pt) WCAG AA × Fail

Any Text WCAG AA × Fail

Large Text (above 18pt) WCAG AAA × Fail

Any Text WCAG AAA × Fail

Black Background



This preview shows how the XYZ color 41.3594, 39.7275, 40.6103 looks on a black background.

Color Contrast Check

Large Text (above 18pt) WCAG AA ✓ Pass

Any Text WCAG AA ✓ Pass

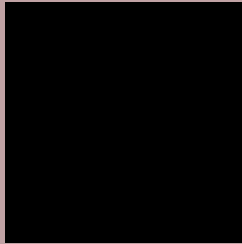
Large Text (above 18pt) WCAG AAA ✓ Pass

Any Text WCAG AAA ✓ Pass

If you want to check with other color combinations, try the [Color Contrast Checker](#).

XYZ 41.3594, 39.7275, 40.6103

Background



This preview shows how black text looks on a background with the XYZ color 41.3594, 39.7275, 40.6103.



This preview shows how white text looks on a background with the XYZ color 41.3594, 39.7275,

Color Blindness Simulation

Color vision deficiency is a very complex topic, and I could not describe the different causes any better than Wikipedia does, so if you want to learn more, you should check out their [article about color blindness](#).

Dichromacy



Original Color

41.3594, 39.7275, 40.6103

Protanopia

38.3041, 39.7167, 42.6930

Deuteranopia

40.7153, 39.9226, 40.6819



Tritanopia

42.2800, 39.8443, 44.9975

Trichromacy



Original Color

41.3594, 39.7275, 40.6103

Protanomaly

39.4337, 39.7658, 42.1564

Deuteranomaly

40.7843, 39.6935, 40.6340

Tritanomaly

41.9929, 39.7295, 43.4855

Monochromacy



Original Color

41.3594, 39.7275, 40.6103

Achromatopsia

38.7082, 40.7240, 44.3485

Achromatomaly

39.6609, 40.4161, 42.7565

CSS Examples

Text

The CSS property to change the color of the text to XYZ 41.3594, 39.7275, 40.6103 is called "color". The color property can be set on classes, ids or directly on the HTML element.

This example shows how text in the color `rgb(192, 162, 164)` looks like.

```
.text, #text, p{  
    color:rgb(192, 162, 164)  
}
```

If you want to add a text shadow in that color use the text-shadow property, you can generate a text shadow directly with our [CSS Text Shadow Generator](#).

Here you see how black text with a 4 pixel rgb(192, 162, 164) colored shadow looks like.

```
.shadow{ text-shadow: 4px 4px 2px rgb(192, 162, 164) }
```

Border

The CSS property to change the border of an element to XYZ 41.3594, 39.7275, 40.6103 is called "border". The border property can be set on classes, ids or directly on the HTML element.

This example shows the color as border, it can be applied via the CSS property "border" or "border-color".

```
.border, #border, table{ border:4px solid rgb(192, 162, 164) }
```


If only the border color should be changed use the property `border-color`.

```
.border{ border-color:rgb(192, 162, 164) }
```

If you want to add a box shadow in that color use:

Here you see how a box with a 4 pixel `rgb(192, 162, 164)` colored shadow looks like.

```
.boxshadow{ -moz-box-shadow:4px 4px 4px 4px rgb(192, 162, 164); -webkit-box-shadow:4px 4px 4px 4px rgb(192, 162, 164); box-shadow:4px 4px 4px 4px rgb(192, 162, 164) }
```

Background

The CSS property to change the background color of an element to XYZ 41.3594, 39.7275, 40.6103 is called "background". The background property can be set on classes, ids or directly on the HTML element.

```
.background, #background, body{  
background: rgb(192, 162, 164) }
```

If only the background color should be changed can be used:

```
.background{ background-color: rgb(192,  
162, 164) }
```

This example shows the color as background, it is applied via the CSS property "background".

To optimize and compress your CSS code, you can use our [online CSS compressor and optimizer](#) based on csstidy. If you want to create a linear or radial gradient as background or border, check our [CSS Gradient Generator](#).

Hey! You found this booklet interesting? Support Converting Colors with the new Membership Option!

The pro membership hides all ads, plus gives you double the colors in the color bucket, and more awesome pro features!

[Learn more, Memberships starting at \\$2.50/m!](#)

**Follow me
on Twitter!**

@ConvertingColor