

Converting Colors

XYZ(41.2778, 37.2314, 32.9734)

Have a look what the booklet for
XYZ(41.2778, 37.2314, 32.9734)
contains.

XYZ(41.4754, 37.4320, 33.0561)	3
<i>Conversions</i>	4
<i>Details</i>	6
<i>Harmonies</i>	12
<i>Previews</i>	24
<i>Color Blindness Simulation</i>	28
<i>CSS Examples</i>	31

Color

**XYZ(41.4754, 37.4320,
33.0561)**

Conversions

Conversions Part 1

Format	Color
Hex	CC9894
RGB	204, 152, 148
RGB Percent	80%, 60%, 58%
CMY	0.2000, 0.4039, 0.4196
CMYK	0.00, 0.25, 0.27, 0.20
HSL	4°, 35%, 69%
HSV	4°, 27%, 80%
XYZ	41.4754, 37.4320, 33.0561
YIQ	167.0920, 32.2760, 9.7800

Conversions

Conversions Part 2

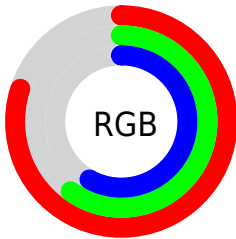
Format	Color
R_{YB}	204, 152, 148
Decimal	13408404
CIE _{Lab}	67.60, 18.90, 9.72
CIE _{LCh}	68, 21.254, 27.211
Yxy	37.4320, 0.3704, 0.3343
Android (android.graphics.Color)	4291598484 (0xFFCC9894)
YUV	167.0920, -9.4124, 32.3683
Hunter-Lab	61.1817, 13.9381, 10.7932

Details

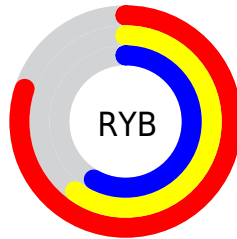
The XYZ color **41.4754, 37.4320, 33.0561** is a light color, and the websafe version is hex **CC9999**. A complement of this color would be **43.7655, 51.9625, 64.8500**, and the grayscale version is **36.8097, 38.7267, 42.1733**.

A 20% lighter version of the original color is **73.9720, 69.6669, 65.4254**, and **19.2058, 16.5600, 13.4934** is the 20% darker color. If you saturate the color by 10%, you get **37.1683, 31.1780, 24.3437**, and if you desaturate by 10%, it is **46.5601, 44.7852, 43.4325**.

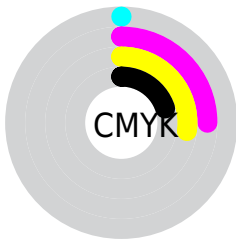
Distribution



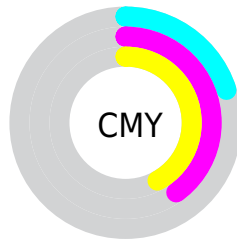
- Red (80%)
- Green (60%)
- Blue (58%)



- Red (80%)
- Yellow (60%)
- Blue (58%)



- Cyan (0%)
- Magenta (25%)
- Yellow (27%)
- Black (20%)





- Cyan (20%)
- Magenta (40%)
- Yellow (42%)

Brightness & Saturation Gradients


These gradients show how the XYZ color 41.4754, 37.4320, 33.0561 changes by changing the brightness by 10 percent. The first figure shows a shift by +10% for each color and the second figure -10%.


Similar to the brightness gradients but the following saturation gradients show a change of the XYZ color 41.4754, 37.4320, 33.0561 by changing the saturation by 10% instead.


 41.4754, 37.4320,
33.0561


 41.4754, 37.4320,
33.0561


343.3324,
335.1771, 330.5422

 28.8800, 25.5421,
21.8980


 76.6752, 71.2367,
65.5801

 19.1339, 16.4814,
13.5843


 100.0104, 93.9203,
87.7831

 11.8717, 9.8655,
7.6967


127.6562,
120.9707, 114.5047

 6.7279, 5.3098,
3.8165

159.9780,
152.7722, 146.1636

 3.3373, 2.4302,
1.5252

197.3412,
189.7092, 183.1783

 1.3346, 0.8414,
0.2366

240.1110,

 0.2089, 0.0000,

232.1660, 225.9672

0.0000

288.6530,
280.5272, 274.9490

■ 0.0000, 0.0000,
0.0000

■ 41.4754, 37.4320,
33.0561

■ 41.4754, 37.4320,
33.0561

■ 37.1683, 31.1780,
24.3437

■ 46.5601, 44.7852,
43.4325

■ 33.5975, 25.9655,
17.2065

■ 52.4549, 53.2813,
55.5507

■ 30.7226, 21.7394,
11.5511

■ 59.1941, 62.9681,
69.4865

■ 28.4982, 18.4375,
7.2732

■ 66.8093, 73.8890,
85.3105

■ 26.8730, 15.9905,
4.2550

■ 75.3303, 86.0852,
103.0894

■ 25.7885, 14.3194,
2.3588

■ 78.7119, 91.5774,
108.1354

■ 25.1704, 13.3287,
1.3954

■ 25.0670, 13.1675,
1.2204

Harmonies

Analogous

The Analogous color harmony consists of three colors that are next to each other on the color wheel.



42.2436, 37.4320, 41.6405



41.4754, 37.4320, 33.0561



39.0972, 37.4320, 27.4015

Triad

The Triadic color harmony groups three colors that are evenly spaced from another and form a triangle on the color wheel.



41.4754, 37.4320, 33.0561



30.5437, 37.4320, 31.7523



35.2726, 37.4320, 61.5475

Complementary

The Complementary color scheme is a pair of colors which are on the opposite of each other on the color wheel.



41.4754, 37.4320, 33.0561



43.7655, 51.9625, 64.8500

Split Complementary

Split-complementary colors differ from the complementary color scheme. The scheme consists of three colors, the original color and two neighbors of the complement color.



32.2765, 37.4320, 57.8704



41.4754, 37.4320, 33.0561



29.6533, 37.4320, 39.8862

Square

The Square scheme is like the rectangle color scheme, but the four colors are evenly spaced on the color wheel.



41.4754, 37.4320, 33.0561



32.7762, 37.4320, 26.7338



30.2679, 37.4320, 49.5699



38.5350, 37.4320, 58.9856

Rectangle

The Rectangle color scheme consists of four colors that form a rectangle on the color wheel.



41.4754, 37.4320, 33.0561



36.9898, 37.4320, 25.5820



30.2679, 37.4320, 49.5699



34.2026, 37.4320, 60.9886

Sweetspot

The Sweet Spot groups the original color and five complimentary colors.



41.4764, 37.4337, 33.0569



86.1900, 87.2597, 90.5947



45.9486, 38.2002, 59.7590



18.1137, 18.1955, 18.7017



0.0000, 0.0000, 0.0000



20.3446, 21.4041, 23.3091

Same Dimension

The Same Dimension uses a secret algorithm to generate beautiful new colors.



41.4764, 37.4337, 33.0569



64.2723, 55.5863, 45.7949



46.5149, 47.5108, 34.7364



11.2757, 11.3403, 11.6740



15.8032, 8.3394, 0.7767



0.8383, 0.4762, 0.0477

Inverse Universe

The Inverse Universe completely reimagines the original color for something new.



43.7655, 51.9625, 64.8500



68.6824, 83.6020, 107.1246



37.9156, 40.2626, 62.9000



11.4720, 12.5843, 14.3948



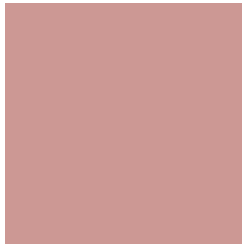
18.3989, 25.8217, 39.9706



0.9702, 1.3742, 2.0690

Previews

White Background



This preview shows how the XYZ color 41.4754, 37.4320, 33.0561 looks on a white background.

Color Contrast Check

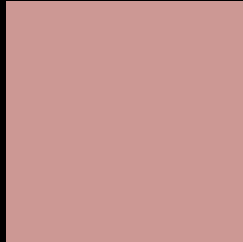
Large Text (above 18pt) WCAG AA × Fail

Any Text WCAG AA × Fail

Large Text (above 18pt) WCAG AAA × Fail

Any Text WCAG AAA × Fail

Black Background



This preview shows how the XYZ color 41.4754, 37.4320, 33.0561 looks on a black background.

Color Contrast Check

Large Text (above 18pt) WCAG AA ✓ Pass

Any Text WCAG AA ✓ Pass

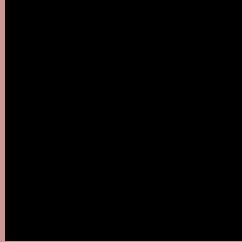
Large Text (above 18pt) WCAG AAA ✓ Pass

Any Text WCAG AAA ✓ Pass

If you want to check with other color combinations, try the [Color Contrast Checker](#).

XYZ 41.4754, 37.4320, 33.0561

Background



This preview shows how black text looks on a background with the XYZ color 41.4754, 37.4320, 33.0561.



This preview shows how white text looks on a background with the XYZ color 41.4754, 37.4320,

Color Blindness Simulation

Color vision deficiency is a very complex topic, and I could not describe the different causes any better than Wikipedia does, so if you want to learn more, you should check out their [article about color blindness](#).

Dichromacy



Original Color

41.4754, 37.4320, 33.0561

Protanopia

35.7694, 37.4635, 36.3563

Deuteranopia

38.4036, 37.5942, 32.8361



Tritanopia

42.5162, 37.3650, 38.6895

Trichromacy



Original Color

41.4754, 37.4320, 33.0561

Protanomaly

37.5297, 37.3537, 34.9377

Deuteranomaly

39.4031, 37.3529, 32.7368

Tritanomaly

42.2442, 37.5127, 36.4666

Monochromacy



Original Color

41.4754, 37.4320, 33.0561

Achromatopsia

36.7301, 38.6429, 42.0822

Achromatomaly

38.0879, 38.0820, 38.6008

CSS Examples

Text

The CSS property to change the color of the text to XYZ 41.4754, 37.4320, 33.0561 is called "color". The color property can be set on classes, ids or directly on the HTML element.

This example shows how text in the color `rgb(204, 152, 148)` looks like.

```
.text, #text, p{  
    color:rgb(204, 152, 148)  
}
```

If you want to add a text shadow in that color use the text-shadow property, you can generate a text shadow directly with our [CSS Text Shadow Generator](#).

Here you see how black text with a 4 pixel rgb(204, 152, 148) colored shadow looks like.

```
.shadow{ text-shadow: 4px 4px 2px rgb(204, 152, 148) }
```

Border

The CSS property to change the border of an element to XYZ 41.4754, 37.4320, 33.0561 is called "border". The border property can be set on classes, ids or directly on the HTML element.

This example shows the color as border, it can be applied via the CSS property "border" or "border-color".

```
.border, #border, table{ border:4px solid rgb(204, 152, 148) }
```


If only the border color should be changed use the property border-color.

```
.border{ border-color:rgb(204, 152, 148) }
```

If you want to add a box shadow in that color use:

Here you see how a box with a 4 pixel rgb(204, 152, 148) colored shadow looks like.

```
.boxshadow{ -moz-box-shadow:4px 4px 4px  
4px rgb(204, 152, 148); -webkit-box-  
shadow:4px 4px 4px 4px rgb(204, 152, 148);  
box-shadow:4px 4px 4px 4px rgb(204, 152,  
148) }
```

Background

The CSS property to change the background color of an element to XYZ 41.4754, 37.4320, 33.0561 is called "background". The background property can be set on classes, ids or directly on the HTML element.

```
.background, #background, body{  
background: rgb(204, 152, 148) }
```

If only the background color should be changed can be used:

```
.background{ background-color: rgb(204,  
152, 148) }
```

This example shows the color as background, it is applied via the CSS property "background".

To optimize and compress your CSS code, you can use our [online CSS compressor and optimizer](#) based on csstidy. If you want to create a linear or radial gradient as background or border, check our [CSS Gradient Generator](#).

Hey! You found this booklet interesting? Support Converting Colors with the new Membership Option!

The pro membership hides all ads, plus gives you double the colors in the color bucket, and more awesome pro features!

[Learn more, Memberships starting at \\$2.50/m!](#)

**Follow me
on Twitter!**

@ConvertingColor