

Converting Colors

XYZ(41.2793, 40.5625, 39.1657)

Have a look what the booklet for
XYZ(41.2793, 40.5625, 39.1657)
contains.

XYZ(41.3740, 40.5598, 39.3664)	3
<i>Conversions</i>	4
<i>Details</i>	6
<i>Harmonies</i>	12
<i>Previews</i>	24
<i>Color Blindness Simulation</i>	28
<i>CSS Examples</i>	31

Color

**XYZ(41.3740, 40.5598,
39.3664)**

Conversions

Conversions Part 1

Format	Color
Hex	BFA5A1
RGB	191, 165, 161
RGB Percent	75%, 65%, 63%
CMY	0.2510, 0.3529, 0.3686
CMYK	0.00, 0.14, 0.16, 0.25
HSL	8°, 19%, 69%
HSV	8°, 16%, 75%
XYZ	41.3740, 40.5598, 39.3664
YIQ	172.3180, 16.7800, 4.2680

Conversions

Conversions Part 2

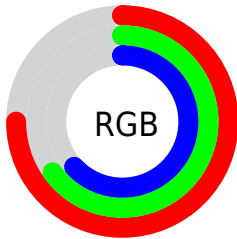
Format	Color
RYB	191, 166, 161
Decimal	12559777
CIELab	69.87, 8.82, 5.57
CIELCh	70, 10.432, 32.248
Yxy	40.5598, 0.3411, 0.3344
Android (android.graphics.Color)	4290749857 (0xFFBFA5A1)
YUV	172.3180, -5.5798, 16.3841
Hunter-Lab	63.6866, 4.5111, 7.9318

Details

The XYZ color **41.3740, 40.5598, 39.3664** is a light color, and the websafe version is hex **CC9999**. A complement of this color would be **41.8720, 46.8783, 56.1321**, and the grayscale version is **39.3961, 41.4477, 45.1366**.

A 20% lighter version of the original color is **76.6993, 76.1007, 75.6122**, and **19.0361, 18.2544, 17.2720** is the 20% darker color. If you saturate the color by 10%, you get **37.0222, 34.3488, 30.2310**, and if you desaturate by 10%, it is **46.3717, 47.6501, 49.9875**.

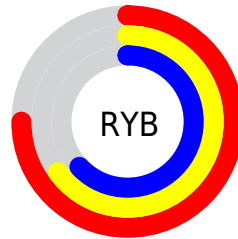
Distribution



Red (75%)

Green (65%)

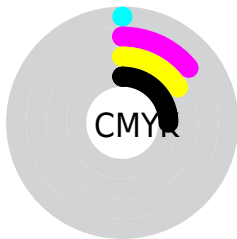
Blue (63%)



Red (75%)

Yellow (65%)

Blue (63%)

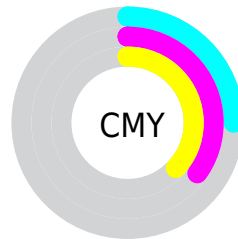


Cyan (0%)

Magenta (14%)

Yellow (16%)

Black (25%)



Cyan (25%)


Magenta (35%)


Yellow (37%)

Brightness & Saturation Gradients


These gradients show how the XYZ color 41.3740, 40.5598, 39.3664 changes by changing the brightness by 10 percent. The first figure shows a shift by +10% for each color and the second figure -10%.


Similar to the brightness gradients but the following saturation gradients show a change of the XYZ color 41.3740, 40.5598, 39.3664 by changing the saturation by 10% instead.


 41.3740, 40.5598,
39.3664


 41.3740, 40.5598,
39.3664


342.9173,
348.4774, 358.9181

 28.8004, 27.9753,
26.7349


 76.5224, 76.0152,
75.4242

 19.0734, 18.3070,
17.1435


 99.8280, 99.6549,
99.6876

 11.8276, 11.1706,
10.1738


127.4416,
127.7484, 128.6653

 6.6978, 6.1817,
5.4073

159.7285,
160.6802, 162.7759

 3.3185, 2.9559,
2.4253

197.0542,
198.8345, 202.4380

 1.3243, 1.1088,
0.8001

239.7840,

 0.2013, 0.0000,

242.5960, 248.0700

0.0000

288.2832,
292.3488, 300.0905

■ 0.0000, 0.0000,
0.0000

■ 41.3740, 40.5598,
39.3664

■ 41.3740, 40.5598,
39.3664

■ 37.0222, 34.3488,
30.2310

■ 46.3717, 47.6501,
49.9875

■ 33.2867, 28.9775,
22.5125

■ 52.0368, 55.6464,
62.1537

■ 30.1404, 24.4115,
16.1405

■ 58.3939, 64.5812,
75.9244

■ 27.5528, 20.6118,
11.0377

■ 65.4654, 74.4835,
91.3550

■ 25.4908, 17.5361,
7.1187

■ 73.0299, 85.2842,
107.2202

■ 23.9177, 15.1380,
4.2877

■ 75.2960, 89.8165,
107.9755

■ 22.7918, 13.3658,
2.4339

■ 22.0636, 12.1598,
1.4197

■ 21.8442, 11.7928,
1.1249

Harmonies

Analogous

The Analogous color harmony consists of three colors that are next to each other on the color wheel.



41.9007, 40.5598, 43.7976



41.3740, 40.5598, 39.3664



40.0888, 40.5598, 36.4055

Triad

The Triadic color harmony groups three colors that are evenly spaced from another and form a triangle on the color wheel.



41.3740, 40.5598, 39.3664



35.7375, 40.5598, 39.9567



38.6789, 40.5598, 54.1633

Complementary

The Complementary color scheme is a pair of colors which are on the opposite of each other on the color wheel.



41.3740, 40.5598, 39.3664



41.8720, 46.8783, 56.1321

Split Complementary

Split-complementary colors differ from the complementary color scheme. The scheme consists of three colors, the original color and two neighbors of the complement color.



37.0528, 40.5598, 52.9503



41.3740, 40.5598, 39.3664



35.3846, 40.5598, 44.5299

Square

The Square scheme is like the rectangle color scheme, but the four colors are evenly spaced on the color wheel.



41.3740, 40.5598, 39.3664



36.8376, 40.5598, 36.7284



35.8592, 40.5598, 49.3336



40.3165, 40.5598, 52.5381

Rectangle

The Rectangle color scheme consists of four colors that form a rectangle on the color wheel.



41.3740, 40.5598, 39.3664



38.9922, 40.5598, 35.5433



35.8592, 40.5598, 49.3336



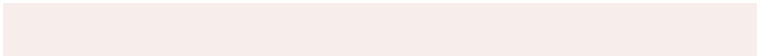
38.1128, 40.5598, 54.0738

Sweetspot

The Sweet Spot groups the original color and five complimentary colors.



41.3751, 40.5616, 39.3673



83.6522, 86.1910, 90.8116



43.2008, 40.1545, 52.4878



18.2197, 18.7152, 19.6217



92.9021, 97.7402, 106.4391



19.4759, 20.4902, 22.3138

Same Dimension

The Same Dimension uses a secret algorithm to generate beautiful new colors.



41.3751, 40.5616, 39.3673



71.1701, 68.4687, 64.3251



44.2406, 46.2926, 40.3224



9.6301, 9.7362, 9.9483



14.3902, 7.8192, 0.7508



0.5974, 0.3738, 0.0407

Inverse Universe

The Inverse Universe completely reimagines the original color for something new.



41.8720, 46.8783, 56.1321



72.2351, 82.0222, 100.3038



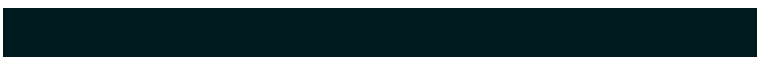
38.8550, 40.8443, 55.1265



9.6971, 10.5864, 12.2045



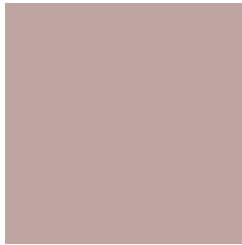
15.1261, 20.3640, 35.5263



0.6230, 0.8587, 1.4018

Previews

White Background



This preview shows how the XYZ color 41.3740, 40.5598, 39.3664 looks on a white background.

Color Contrast Check

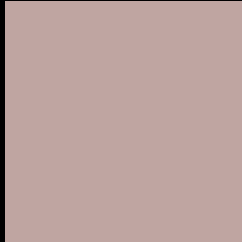
Large Text (above 18pt) WCAG AA × Fail

Any Text WCAG AA × Fail

Large Text (above 18pt) WCAG AAA × Fail

Any Text WCAG AAA × Fail

Black Background



This preview shows how the XYZ color 41.3740, 40.5598, 39.3664 looks on a black background.

Color Contrast Check

Large Text (above 18pt) WCAG AA ✓ Pass

Any Text WCAG AA ✓ Pass

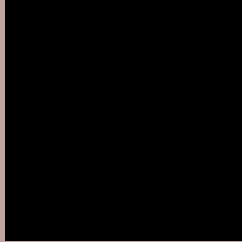
Large Text (above 18pt) WCAG AAA ✓ Pass

Any Text WCAG AAA ✓ Pass

If you want to check with other color combinations, try the [Color Contrast Checker](#).

XYZ 41.3740, 40.5598, 39.3664

Background



This preview shows how black text looks on a background with the XYZ color 41.3740, 40.5598, 39.3664.



This preview shows how white text looks on a background with the XYZ color 41.3740, 40.5598,

Color Blindness Simulation

Color vision deficiency is a very complex topic, and I could not describe the different causes any better than Wikipedia does, so if you want to learn more, you should check out their [article about color blindness](#).

Dichromacy



Original Color

41.3740, 40.5598, 39.3664

Protanopia

38.9801, 40.6599, 40.9156

Deuteranopia

41.3740, 40.5598, 39.3664



Tritanopia

42.8274, 40.6270, 46.1420

Trichromacy



Original Color

41.3740, 40.5598, 39.3664

Protanomaly

39.6695, 40.4734, 40.3717

Deuteranomaly

41.3740, 40.5598, 39.3664

Tritanomaly

42.2694, 40.6597, 43.6505

Monochromacy



Original Color

41.3740, 40.5598, 39.3664

Achromatopsia

39.2122, 41.2543, 44.9259

Achromatomaly

39.8463, 40.7868, 42.8183

CSS Examples

Text

The CSS property to change the color of the text to XYZ 41.3740, 40.5598, 39.3664 is called "color". The color property can be set on classes, ids or directly on the HTML element.

This example shows how text in the color `rgb(191, 165, 161)` looks like.

```
.text, #text, p{  
    color:rgb(191, 165, 161)  
}
```

If you want to add a text shadow in that color use the text-shadow property, you can generate a text shadow directly with our [CSS Text Shadow Generator](#).

Here you see how black text with a 4 pixel rgb(191, 165, 161) colored shadow looks like.

```
.shadow{ text-shadow: 4px 4px 2px rgb(191, 165, 161) }
```

Border

The CSS property to change the border of an element to XYZ 41.3740, 40.5598, 39.3664 is called "border". The border property can be set on classes, ids or directly on the HTML element.

This example shows the color as border, it can be applied via the CSS property "border" or "border-color".

```
.border, #border, table{ border:4px solid rgb(191, 165, 161) }
```


If only the border color should be changed use the property `border-color`.

```
.border{ border-color:rgb(191, 165, 161) }
```

If you want to add a box shadow in that color use:

Here you see how a box with a 4 pixel `rgb(191, 165, 161)` colored shadow looks like.

```
.boxshadow{ -moz-box-shadow:4px 4px 4px  
4px rgb(191, 165, 161); -webkit-box-  
shadow:4px 4px 4px 4px rgb(191, 165, 161);  
box-shadow:4px 4px 4px 4px rgb(191, 165,  
161) }
```

Background

The CSS property to change the background color of an element to XYZ 41.3740, 40.5598, 39.3664 is called "background". The background property can be set on classes, ids or directly on the HTML element.

```
.background, #background, body{  
background: rgb(191, 165, 161) }
```

If only the background color should be changed can be used:

```
.background{ background-color: rgb(191,  
165, 161) }
```

This example shows the color as background, it is applied via the CSS property "background".

To optimize and compress your CSS code, you can use our [online CSS compressor and optimizer](#) based on csstidy. If you want to create a linear or radial gradient as background or border, check our [CSS Gradient Generator](#).

Hey! You found this booklet interesting? Support Converting Colors with the new Membership Option!

The pro membership hides all ads, plus gives you double the colors in the color bucket, and more awesome pro features!

[Learn more, Memberships starting at \\$2.50/m!](#)

**Follow me
on Twitter!**

@ConvertingColor