

Converting Colors

XYZ(41.2841, 39.1381, 41.9377)

Have a look what the booklet for
XYZ(41.2841, 39.1381, 41.9377)
contains.

XYZ(41.2841, 39.1381, 41.9377)	3
<i>Conversions</i>	4
<i>Details</i>	6
<i>Harmonies</i>	12
<i>Previews</i>	24
<i>Color Blindness Simulation</i>	28
<i>CSS Examples</i>	31

Color

**XYZ(41.2841, 39.1381,
41.9377)**

Conversions

Conversions Part 1

Format	Color
Hex	C0A0A7
RGB	192, 160, 167
RGB Percent	75%, 63%, 65%
CMY	0.2471, 0.3725, 0.3451
CMYK	0.00, 0.17, 0.13, 0.25
HSL	347°, 20%, 69%
HSV	347°, 17%, 75%
XYZ	41.2841, 39.1381, 41.9377
YIQ	170.3660, 16.8250, 8.9610

Conversions

Conversions Part 2

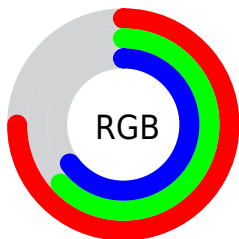
Format	Color
RYB	192, 160, 167
Decimal	12624039
CIELab	68.85, 12.92, 0.78
CIELCh	69, 12.947, 3.449
Yxy	39.1381, 0.3374, 0.3199
Android (android.graphics.Color)	4290814119 (0xFFC0A0A7)
YUV	170.3660, -1.6594, 18.9730
Hunter-Lab	62.5605, 8.3127, 4.0470

Details

The XYZ color **41.2841, 39.1381, 41.9377** is a light color, and the websafe version is hex **CC9999**. A complement of this color would be **42.1054, 48.6767, 53.0777**, and the grayscale version is **38.3942, 40.3937, 43.9887**.

A 20% lighter version of the original color is **76.5522, 74.0145, 79.3587**, and **18.9383, 17.3662, 18.5735** is the 20% darker color. If you saturate the color by 10%, you get **36.9020, 32.4657, 34.0271**, and if you desaturate by 10%, it is **46.3434, 46.9064, 50.8688**.

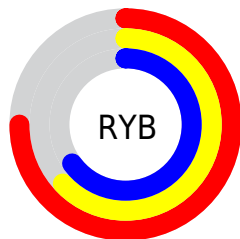
Distribution



Red (75%)

Green (63%)

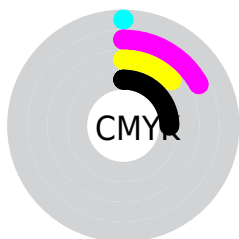
Blue (65%)



Red (75%)

Yellow (63%)

Blue (65%)

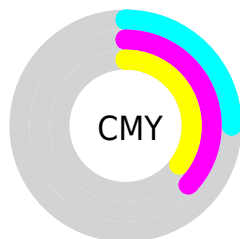


Cyan (0%)

Magenta (17%)

Yellow (13%)

Black (25%)



Cyan (25%)

Magenta (37%)

Yellow (35%)

Brightness & Saturation Gradients

These gradients show how the XYZ color 41.2841, 39.1381, 41.9377 changes by changing the brightness by 10 percent. The first figure shows a shift by +10% for each color and the second figure -10%.

Similar to the brightness gradients but the following saturation gradients show a change of the XYZ color 41.2841, 39.1381, 41.9377 by changing the saturation by 10% instead.

■ 41.2841, 39.1381,
41.9377

■ 41.2841, 39.1381,
41.9377

342.5489,
342.4773, 370.0167

■ 28.7298, 26.8672,
28.7273

■ 76.3870, 73.8492,
79.3744

■ 19.0198, 17.4735,
18.6308

■ 99.6662, 97.0582,
104.4378

■ 11.7886, 10.5727,
11.2297

127.2512,
124.6821, 134.2893

■ 6.6711, 5.7803,
6.1055

159.5072,
157.1051, 169.3473

■ 3.3018, 2.7119,
2.8395

196.7996,
194.7118, 210.0306

■ 1.3153, 0.9833,
1.0133

239.4938,

■ 0.1946, 0.0000,

237.8864, 256.7575

0.0000

287.9552,
287.0134, 309.9467

■ 0.0000, 0.0000,
0.0000

■ 41.2841, 39.1381,
41.9377

■ 41.2841, 39.1381,
41.9377

■ 36.9020, 32.4657,
34.0271

■ 46.3434, 46.9064,
50.8688

■ 33.1647, 26.8348,
27.0977

■ 52.1037, 55.8115,
60.8525

■ 30.0423, 22.1940,
21.1115

■ 58.5919, 65.8985,
71.9230

■ 27.5009, 18.4858,
16.0270

■ 65.8324, 77.2085,
84.1117

■ 25.5035, 15.6464,
11.7994

■ 73.5269, 89.1380,
97.3420

■ 24.0086, 13.6041,
8.3800

■ 75.5484, 89.9466,
107.9873

■ 22.9683, 12.2756,
5.7148

■ 22.3208, 11.5507,
3.7411

■ 22.1561, 11.3736,
3.2166

Harmonies

Analogous

The Analogous color harmony consists of three colors that are next to each other on the color wheel.



40.8467, 39.1381, 47.8750



41.2841, 39.1381, 41.9377



40.5943, 39.1381, 36.6776

Triad

The Triadic color harmony groups three colors that are evenly spaced from another and form a triangle on the color wheel.



41.2841, 39.1381, 41.9377



35.0642, 39.1381, 33.8542



35.4615, 39.1381, 53.5583

Complementary

The Complementary color scheme is a pair of colors which are on the opposite of each other on the color wheel.



41.2841, 39.1381, 41.9377



42.1054, 48.6767, 53.0777

Split Complementary

Split-complementary colors differ from the complementary color scheme. The scheme consists of three colors, the original color and two neighbors of the complement color.



33.9996, 39.1381, 49.1603



41.2841, 39.1381, 41.9377



33.7763, 39.1381, 37.7547

Square

The Square scheme is like the rectangle color scheme, but the four colors are evenly spaced on the color wheel.



41.2841, 39.1381, 41.9377



36.9624, 39.1381, 32.2891



33.3938, 39.1381, 43.2990



37.4378, 39.1381, 54.9358

Rectangle

The Rectangle color scheme consists of four colors that form a rectangle on the color wheel.



41.2841, 39.1381, 41.9377



39.6023, 39.1381, 34.1564



33.3938, 39.1381, 43.2990



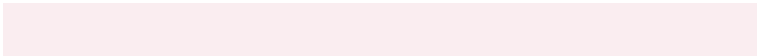
34.8961, 39.1381, 52.3654

Sweetspot

The Sweet Spot groups the original color and five complimentary colors.



41.2852, 39.1399, 41.9385



85.5387, 87.4081, 94.9081



41.9817, 39.2056, 55.2244



18.1997, 18.5187, 20.0971



92.9021, 97.7402, 106.4391



19.4759, 20.4902, 22.3138

Same Dimension

The Same Dimension uses a secret algorithm to generate beautiful new colors.



41.2852, 39.1399, 41.9385



71.7632, 66.2726, 70.5383



42.1860, 41.9487, 39.1333



10.1614, 10.1131, 10.9402



14.9328, 7.6629, 2.2922



0.6717, 0.3417, 0.2387

Inverse Universe

The Inverse Universe completely reimagines the original color for something new.



41.2852, 39.1399, 41.9385



71.7632, 66.2726, 70.5383



41.0429, 45.3404, 56.4580



10.1614, 10.1131, 10.9402



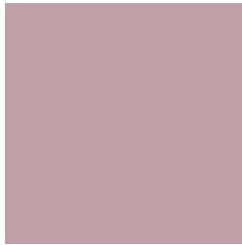
14.9328, 7.6629, 2.2922



0.6717, 0.3417, 0.2387

Previews

White Background



This preview shows how the XYZ color 41.2841, 39.1381, 41.9377 looks on a white background.

Color Contrast Check

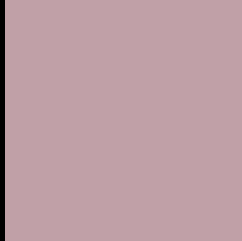
Large Text (above 18pt) WCAG AA × Fail

Any Text WCAG AA × Fail

Large Text (above 18pt) WCAG AAA × Fail

Any Text WCAG AAA × Fail

Black Background



This preview shows how the XYZ color 41.2841, 39.1381, 41.9377 looks on a black background.

Color Contrast Check

Large Text (above 18pt) WCAG AA ✓ Pass

Any Text WCAG AA ✓ Pass

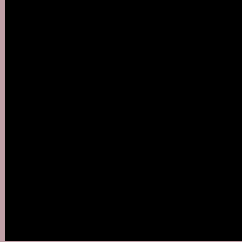
Large Text (above 18pt) WCAG AAA ✓ Pass

Any Text WCAG AAA ✓ Pass

If you want to check with other color combinations, try the [Color Contrast Checker](#).

XYZ 41.2841, 39.1381, 41.9377

Background



This preview shows how black text looks on a background with the XYZ color 41.2841, 39.1381, 41.9377.



This preview shows how white text looks on a background with the XYZ color 41.2841, 39.1381,

Color Blindness Simulation

Color vision deficiency is a very complex topic, and I could not describe the different causes any better than Wikipedia does, so if you want to learn more, you should check out their [article about color blindness](#).

Dichromacy



Original Color

41.2841, 39.1381, 41.9377

Protanopia

37.7470, 39.1238, 44.0902

Deuteranopia

39.9877, 39.2618, 41.5471



Tritanopia

41.8369, 39.1123, 44.3741

Trichromacy



Original Color

41.2841, 39.1381, 41.9377

Protanomaly

38.8913, 38.9182, 43.4924

Deuteranomaly

40.5423, 39.2852, 41.5224

Tritanomaly

41.6462, 39.0360, 43.3699

Monochromacy



Original Color

41.2841, 39.1381, 41.9377

Achromatopsia

38.2080, 40.1978, 43.7754

Achromatomaly

39.1577, 39.6020, 43.1162

CSS Examples

Text

The CSS property to change the color of the text to XYZ 41.2841, 39.1381, 41.9377 is called "color". The color property can be set on classes, ids or directly on the HTML element.

This example shows how text in the color `rgb(192, 160, 167)` looks like.

```
.text, #text, p{  
    color:rgb(192, 160, 167)  
}
```

If you want to add a text shadow in that color use the text-shadow property, you can generate a text shadow directly with our [CSS Text Shadow Generator](#).

Here you see how black text with a 4 pixel rgb(192, 160, 167) colored shadow looks like.

```
.shadow{ text-shadow: 4px 4px 2px rgb(192, 160, 167) }
```

Border

The CSS property to change the border of an element to XYZ 41.2841, 39.1381, 41.9377 is called "border". The border property can be set on classes, ids or directly on the HTML element.

This example shows the color as border, it can be applied via the CSS property "border" or "border-color".

```
.border, #border, table{ border:4px solid rgb(192, 160, 167) }
```


If only the border color should be changed use the property `border-color`.

```
.border{ border-color:rgb(192, 160, 167) }
```

If you want to add a box shadow in that color use:

Here you see how a box with a 4 pixel `rgb(192, 160, 167)` colored shadow looks like.

```
.boxshadow{ -moz-box-shadow:4px 4px 4px  
4px rgb(192, 160, 167); -webkit-box-  
shadow:4px 4px 4px 4px rgb(192, 160, 167);  
box-shadow:4px 4px 4px 4px rgb(192, 160,  
167) }
```

Background

The CSS property to change the background color of an element to XYZ 41.2841, 39.1381, 41.9377 is called "background". The background property can be set on classes, ids or directly on the HTML element.

```
.background, #background, body{  
background: rgb(192, 160, 167) }
```

If only the background color should be changed can be used:

```
.background{ background-color: rgb(192,  
160, 167) }
```

This example shows the color as background, it is applied via the CSS property "background".

To optimize and compress your CSS code, you can use our [online CSS compressor and optimizer](#) based on csstidy. If you want to create a linear or radial gradient as background or border, check our [CSS Gradient Generator](#).

Hey! You found this booklet interesting? Support Converting Colors with the new Membership Option!

The pro membership hides all ads, plus gives you double the colors in the color bucket, and more awesome pro features!

[Learn more, Memberships starting at \\$2.50/m!](#)

**Follow me
on Twitter!**

@ConvertingColor