

# Converting Colors

XYZ(41.3438, 40.0830, 41.0234)

Have a look what the booklet for  
XYZ(41.3438, 40.0830, 41.0234)  
contains.

<b>XYZ(41.3746, 39.9874, 41.1350)</b> .....	3
<b><i>Conversions</i></b> .....	4
<b><i>Details</i></b> .....	6
<b><i>Harmonies</i></b> .....	12
<b><i>Previews</i></b> .....	24
<b><i>Color Blindness Simulation</i></b> .....	28
<b><i>CSS Examples</i></b> .....	31

# Color

**XYZ(41.3746, 39.9874,  
41.1350)**

# Conversions

## Conversions Part 1

<b>Format</b>	<b>Color</b>
Hex	BFA3A5
RGB	191, 163, 165
RGB Percent	75%, 64%, 65%
CMY	0.2510, 0.3608, 0.3529
CMYK	0.00, 0.15, 0.14, 0.25
HSL	356°, 18%, 69%
HSV	356°, 15%, 75%
XYZ	41.3746, 39.9874, 41.1350
YIQ	171.6000, 16.0460, 6.5580

# Conversions

## Conversions Part 2

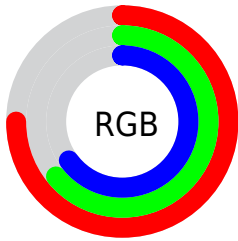
<b>Format</b>	<b>Color</b>
<b>R<sub>YB</sub></b>	191, 163, 165
Decimal	12559269
CIE <sub>Lab</sub>	69.46, 10.57, 2.76
CIE <sub>LCh</sub>	69, 10.929, 14.649
Yxy	39.9874, 0.3378, 0.3264
Android (android.graphics.Color)	4290749349 (0xFFBFA3A5)
YUV	171.6000, -3.2538, 17.0138
Hunter-Lab	63.2356, 6.1290, 5.6965

# Details

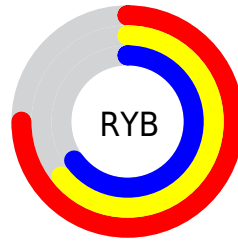
The XYZ color **41.3746, 39.9874, 41.1350** is a light color, and the websafe version is hex **CC9999**. A complement of this color would be **42.9220, 48.7232, 55.2888**, and the grayscale version is **39.0218, 41.0540, 44.7078**.

A 20% lighter version of the original color is **76.7011, 75.2666, 78.1955**, and **18.9816, 17.8795, 18.0734** is the 20% darker color. If you saturate the color by 10%, you get **36.7320, 33.1090, 32.1669**, and if you desaturate by 10%, it is **46.7556, 47.9834, 51.4550**.

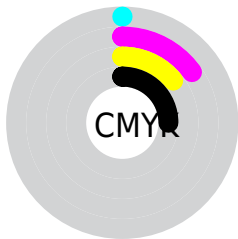
# Distribution



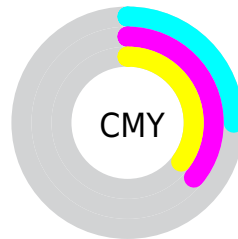
- Red (75%)
- Green (64%)
- Blue (65%)



- Red (75%)
- Yellow (64%)
- Blue (65%)



- Cyan (0%)
- Magenta (15%)
- Yellow (14%)
- Black (25%)



- Cyan (25%)
- Magenta (36%)
- Yellow (35%)


# Brightness & Saturation Gradients

These gradients show how the XYZ color 41.3746, 39.9874, 41.1350 changes by changing the brightness by 10 percent. The first figure shows a shift by +10% for each color and the second figure -10%.


Similar to the brightness gradients but the following saturation gradients show a change of the XYZ color 41.3746, 39.9874, 41.1350 by changing the saturation by 10% instead.





 41.3746, 39.9874,  
41.1350

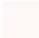
 41.3746, 39.9874,  
41.1350


342.9197,  
346.0705, 366.5779

 28.8009, 27.5287,  
28.1041


 76.5233, 75.1443,  
78.1447

 19.0738, 17.9707,  
18.1644


 99.8291, 98.6114,  
102.9605

 11.8279, 10.9290,  
10.8974


127.4428,  
126.5166, 132.5418

 6.6980, 6.0191,  
5.8846

159.7300,  
159.2446, 167.3070

 3.3186, 2.8567,  
2.7074

197.0559,  
197.1795, 207.6746

 1.3244, 1.0574,  
0.9471

239.7859,

 0.2014, 0.0000,

240.7059, 254.0633

0.0000

288.2854,  
290.2081, 306.8915

0.0000, 0.0000,  
0.0000

41.3746, 39.9874,  
41.1350

41.3746, 39.9874,  
41.1350

36.7320, 33.1090,  
32.1669

46.7556, 47.9834,  
51.4550

32.7924, 27.2932,  
24.4922

52.9017, 57.1378,  
63.1769

29.5225, 22.4888,  
18.0520

59.8424, 67.4963,  
76.3515

26.8849, 18.6380,  
12.7818

67.6048, 79.1003,  
91.0259

24.8387, 15.6771,  
8.6112

75.0860, 89.7324,  
106.8695

■ 23.3380, 13.5349,  
5.4623

■ 75.2960, 89.8165,  
107.9755

■ 22.3303, 12.1291,  
3.2470

■ 21.7524, 11.3602,  
1.8620

■ 21.5628, 11.1071,  
1.4095

# Harmonies

## Analogous

The Analogous color harmony consists of three colors that are next to each other on the color wheel.



41.3632, 39.9874, 46.1550



41.3746, 39.9874, 41.1350



40.4647, 39.9874, 37.0796

# Triad

The Triadic color harmony groups three colors that are evenly spaced from another and form a triangle on the color wheel.



41.3746, 39.9874, 41.1350



35.6787, 39.9874, 37.0042



37.1183, 39.9874, 53.5664

# Complementary

The Complementary color scheme is a pair of colors which are on the opposite of each other on the color wheel.



41.3746, 39.9874, 41.1350



42.9220, 48.7232, 55.2888

# Split Complementary

Split-complementary colors differ from the complementary color scheme. The scheme consists of three colors, the original color and two neighbors of the complement color.



35.6506, 39.9874, 50.7092



41.3746, 39.9874, 41.1350



34.8371, 39.9874, 41.0247

# Square

The Square scheme is like the rectangle color scheme, but the four colors are evenly spaced on the color wheel.



41.3746, 39.9874, 41.1350



37.1577, 39.9874, 34.8226



34.8269, 39.9874, 46.0359



38.8688, 39.9874, 53.6016



# Rectangle

The Rectangle color scheme consists of four colors that form a rectangle on the color wheel.



41.3746, 39.9874, 41.1350



39.4737, 39.9874, 35.3579



34.8269, 39.9874, 46.0359



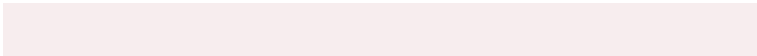
36.5767, 39.9874, 52.8949

# Sweetspot

The Sweet Spot groups the original color and five complimentary colors.



41.3757, 39.9892, 41.1358



84.3541, 86.8532, 93.3318



43.4060, 40.7341, 54.8653



18.3503, 18.8146, 20.1638



92.9021, 97.7402, 106.4391



19.4759, 20.4902, 22.3138



# Same Dimension

The Same Dimension uses a secret algorithm to generate beautiful new colors.



41.3757, 39.9892, 41.1358



70.9373, 66.9244, 67.5727



43.3631, 44.2525, 40.9087



9.5570, 9.5471, 10.0563



14.1822, 7.3040, 0.9873



0.5651, 0.2899, 0.0888



# Inverse Universe

The Inverse Universe completely reimagines the original color for something new.



41.3757, 39.9892, 41.1358



70.9373, 66.9244, 67.5727



40.6967, 43.9236, 55.6238



9.5570, 9.5471, 10.0563



14.1822, 7.3040, 0.9873

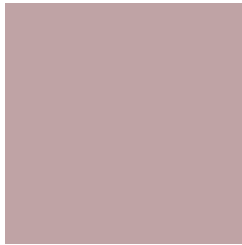


0.5651, 0.2899, 0.0888



# Previews

## White Background



This preview shows how the XYZ color 41.3746, 39.9874, 41.1350 looks on a white background.

## Color Contrast Check

Large Text (above 18pt) WCAG AA × Fail

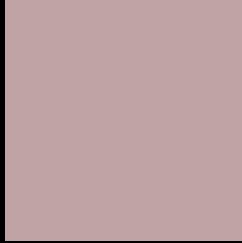
Any Text WCAG AA × Fail

Large Text (above 18pt) WCAG AAA × Fail

Any Text WCAG AAA × Fail



# Black Background



This preview shows how the XYZ color 41.3746, 39.9874, 41.1350 looks on a black background.

## Color Contrast Check

Large Text (above 18pt) WCAG AA ✓ Pass

Any Text WCAG AA ✓ Pass

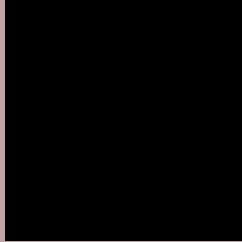
Large Text (above 18pt) WCAG AAA ✓ Pass

Any Text WCAG AAA ✓ Pass

If you want to check with other color combinations, try the [Color Contrast Checker](#).

# XYZ 41.3746, 39.9874, 41.1350

## Background



This preview shows how black text looks on a background with the XYZ color 41.3746, 39.9874, 41.1350.



This preview shows how white text looks on a background with the XYZ color 41.3746, 39.9874,



# Color Blindness Simulation

Color vision deficiency is a very complex topic, and I could not describe the different causes any better than Wikipedia does, so if you want to learn more, you should check out their [article about color blindness](#).

## Dichromacy



### Original Color

41.3746, 39.9874, 41.1350

### Protanopia

38.4894, 40.0873, 42.7548

### Deuteranopia

40.8060, 39.9589, 41.1594



## Tritanopia

42.2985, 40.1031, 45.5557

# Trichromacy



## Original Color

41.3746, 39.9874, 41.1350

## Protanomaly

39.6162, 40.1308, 42.2172

## Deuteranomaly

41.0533, 40.0863, 41.1710

## Tritanomaly

42.0092, 39.9874, 44.0323

# Monochromacy



## Original Color

41.3746, 39.9874, 41.1350

## Achromatopsia

39.2122, 41.2543, 44.9259

## Achromatomaly

39.9398, 40.8242, 43.3109

# CSS Examples

## Text

The CSS property to change the color of the text to XYZ 41.3746, 39.9874, 41.1350 is called "color". The color property can be set on classes, ids or directly on the HTML element.

This example shows how text in the color `rgb(191, 163, 165)` looks like.

```
.text, #text, p{  
    color:rgb(191, 163, 165)  
}
```

If you want to add a text shadow in that color use the text-shadow property, you can generate a text shadow directly with our [CSS Text Shadow Generator](#).

Here you see how black text with a 4 pixel rgb(191, 163, 165) colored shadow looks like.

```
.shadow{ text-shadow: 4px 4px 2px rgb(191, 163, 165) }
```

## Border

The CSS property to change the border of an element to XYZ 41.3746, 39.9874, 41.1350 is called "border". The border property can be set on classes, ids or directly on the HTML element.

This example shows the color as border, it can be applied via the CSS property "border" or "border-color".

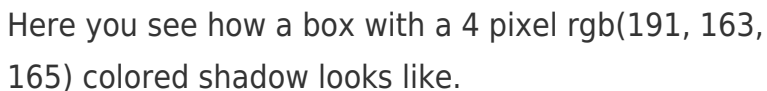
```
.border, #border, table{ border:4px solid rgb(191, 163, 165) }
```



If only the border color should be changed use the property `border-color`.

```
.border{ border-color:rgb(191, 163, 165) }
```

If you want to add a box shadow in that color use:



Here you see how a box with a 4 pixel `rgb(191, 163, 165)` colored shadow looks like.

```
.boxshadow{ -moz-box-shadow:4px 4px 4px 4px rgb(191, 163, 165); -webkit-box-shadow:4px 4px 4px 4px rgb(191, 163, 165); box-shadow:4px 4px 4px 4px rgb(191, 163, 165) }
```

# Background

The CSS property to change the background color of an element to XYZ 41.3746, 39.9874, 41.1350 is called "background". The background property can be set on classes, ids or directly on the HTML element.

```
.background, #background, body{  
background: rgb(191, 163, 165) }
```

If only the background color should be changed can be used:

```
.background{ background-color: rgb(191,  
163, 165) }
```

This example shows the color as background, it is applied via the CSS property "background".

To optimize and compress your CSS code, you can use our [online CSS compressor and optimizer](#) based on csstidy. If you want to create a linear or radial gradient as background or border, check our [CSS Gradient Generator](#).

Hey! You found this booklet interesting? Support Converting Colors with the new Membership Option!

The pro membership hides all ads, plus gives you double the colors in the color bucket, and more awesome pro features!

**[Learn more, Memberships starting at \\$2.50/m!](#)**

**Follow me  
on Twitter!**

@ConvertingColor