

# Converting Colors

XYZ(41.3814, 40.0159, 40.3815)

Have a look what the booklet for  
XYZ(41.3814, 40.0159, 40.3815)  
contains.

<b>XYZ(41.4463, 40.0452, 40.1954)</b> .....	3
<b><i>Conversions</i></b> .....	4
<b><i>Details</i></b> .....	6
<b><i>Harmonies</i></b> .....	12
<b><i>Previews</i></b> .....	24
<b><i>Color Blindness Simulation</i></b> .....	28
<b><i>CSS Examples</i></b> .....	31

# Color

**XYZ(41.4463, 40.0452,  
40.1954)**

# Conversions

## Conversions Part 1

Format	Color
Hex	C0A3A3
RGB	192, 163, 163
RGB Percent	75%, 64%, 64%
CMY	0.2471, 0.3608, 0.3608
CMYK	0.00, 0.15, 0.15, 0.25
HSL	0°, 19%, 70%
HSV	0°, 15%, 75%
XYZ	41.4463, 40.0452, 40.1954
YIQ	171.6710, 17.2840, 6.1480

# Conversions

## Conversions Part 2

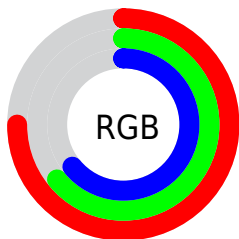
Format	Color
<a href="#">RYB</a>	<a href="#">192, 163, 163</a>
Decimal	<a href="#">12624803</a>
CIELab	<a href="#">69.50, 10.62, 3.94</a>
CIElCh	<a href="#">70, 11.324, 20.383</a>
Yxy	<a href="#">40.0452, 0.3406, 0.3291</a>
Android (android.graphics.Color)	<a href="#">4290814883</a> ( <a href="#">0xFFC0A3A3</a> )
YUV	<a href="#">171.6710, -4.2748, 17.8285</a>
Hunter-Lab	<a href="#">63.2813, 6.1670, 6.6367</a>

# Details

The XYZ color **41.4463, 40.0452, 40.1954** is a light color, and the websafe version is hex **CC9999**. A complement of this color would be **43.4681, 49.2906, 57.0926**, and the grayscale version is **39.0621, 41.0964, 44.7540**.

A 20% lighter version of the original color is **76.7932, 75.3445, 76.8252**, and **19.0349, 17.9198, 17.4946** is the 20% darker color. If you saturate the color by 10%, you get **36.7013, 33.1022, 30.7609**, and if you desaturate by 10%, it is **46.9722, 48.1312, 51.1797**.

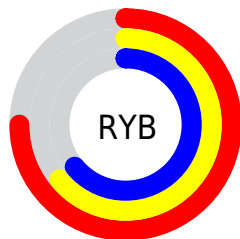
# Distribution



Red (75%)

Green (64%)

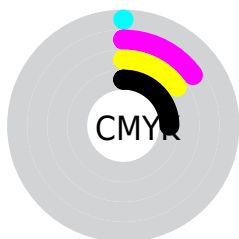
Blue (64%)



Red (75%)

Yellow (64%)

Blue (64%)

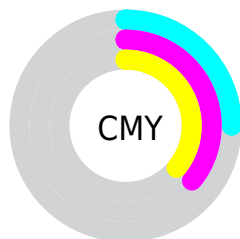


Cyan (0%)

Magenta (15%)

Yellow (15%)

Black (25%)



Cyan (25%)

Magenta (36%)


Yellow (36%)


# Brightness & Saturation Gradients

These gradients show how the XYZ color 41.4463, 40.0452, 40.1954 changes by changing the brightness by 10 percent. The first figure shows a shift by +10% for each color and the second figure -10%.

Similar to the brightness gradients but the following saturation gradients show a change of the XYZ color 41.4463, 40.0452, 40.1954 by changing the saturation by 10% instead.





 41.4463, 40.0452,  
40.1954


 41.4463, 40.0452,  
40.1954


343.2133,  
346.3140, 362.5230

 28.8572, 27.5738,  
27.3760


 76.6314, 75.2323,  
76.7013

 19.1166, 18.0046,  
17.6209


 99.9580, 98.7169,  
101.2249

 11.8590, 10.9533,  
10.5115


127.5946,  
126.6412, 130.4869

 6.7193, 6.0354,  
5.6294

159.9064,  
159.3897, 164.9060

 3.3319, 2.8666,  
2.5559

197.2588,  
197.3469, 204.9006

 1.3316, 1.0625,  
0.8696

240.0172,

 0.2067, 0.0000,

240.8971, 250.8892

0.0000

288.5469,  
290.4247, 303.2905

0.0000, 0.0000,  
0.0000

41.4463, 40.0452,  
40.1954

41.4463, 40.0452,  
40.1954

36.7013, 33.1022,  
30.7609

46.9722, 48.1312,  
51.1797

32.6989, 27.2455,  
22.8042

53.3084, 57.4027,  
63.7764

29.4025, 22.4219,  
16.2511

60.4870, 67.9067,  
78.0479

26.7711, 18.5714,  
11.0203

68.5372, 79.6861,  
94.0523

24.7596, 15.6280,  
7.0219

75.5484, 89.9466,  
107.9873

■ 23.3173, 13.5174,  
4.1550

■ 22.3854, 12.1535,  
2.3027

■ 21.8922, 11.4317,  
1.3226

■ 21.7387, 11.2071,  
1.0174

# Harmonies

## Analogous

The Analogous color harmony consists of three colors that are next to each other on the color wheel.



41.6269, 40.0452, 45.3027



41.4463, 40.0452, 40.1954



40.3431, 40.0452, 36.3109

# Triad

The Triadic color harmony groups three colors that are evenly spaced from another and form a triangle on the color wheel.



41.4463, 40.0452, 40.1954



35.4225, 40.0452, 37.5038



37.4786, 40.0452, 54.2789

# Complementary

The Complementary color scheme is a pair of colors which are on the opposite of each other on the color wheel.



41.4463, 40.0452, 40.1954



43.4681, 49.2906, 57.0926

# Split Complementary

Split-complementary colors differ from the complementary color scheme. The scheme consists of three colors, the original color and two neighbors of the complement color.



35.8681, 40.0452, 51.8100



41.4463, 40.0452, 40.1954



34.7062, 40.0452, 41.9452

# Square

The Square scheme is like the rectangle color scheme, but the four colors are evenly spaced on the color wheel.



41.4463, 40.0452, 40.1954



36.8528, 40.0452, 34.8452



34.8667, 40.0452, 47.1967



39.2969, 40.0452, 53.7161



# Rectangle

The Rectangle color scheme consists of four colors that form a rectangle on the color wheel.



41.4463, 40.0452, 40.1954



39.2519, 40.0452, 34.8057



34.8667, 40.0452, 47.1967



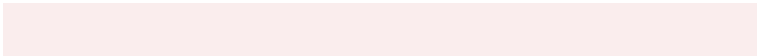
36.8959, 40.0452, 53.7690

# Sweetspot

The Sweet Spot groups the original color and five complimentary colors.



41.4474, 40.0470, 40.1962



85.1358, 87.2477, 92.7847



44.3503, 41.2072, 55.4859



18.1020, 18.4799, 19.5825



92.9021, 97.7402, 106.4391



19.4759, 20.4902, 22.3138

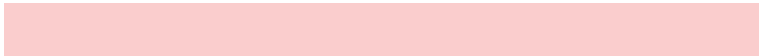


# Same Dimension

The Same Dimension uses a secret algorithm to generate beautiful new colors.



41.4474, 40.0470, 40.1962



72.2110, 68.3353, 67.0898



44.1707, 45.4935, 41.1040



10.0733, 10.0781, 10.4762



14.6277, 7.5412, 0.6846



0.6321, 0.3259, 0.0296



# Inverse Universe

The Inverse Universe completely reimagines the original color for something new.



43.4681, 49.2906, 57.0926



76.5468, 88.1691, 103.3442



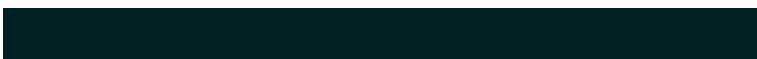
40.4403, 43.2350, 56.0834



10.3685, 11.4283, 12.9442



19.0827, 27.9218, 37.9403

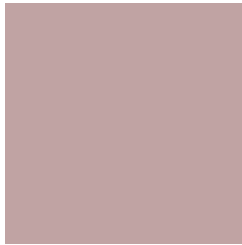


0.8245, 1.2065, 1.6393



# Previews

## White Background



This preview shows how the XYZ color 41.4463, 40.0452, 40.1954 looks on a white background.

## Color Contrast Check

Large Text (above 18pt) WCAG AA × Fail

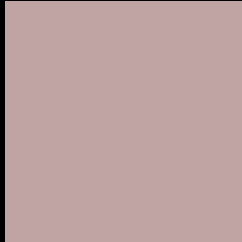
Any Text WCAG AA × Fail

Large Text (above 18pt) WCAG AAA × Fail

Any Text WCAG AAA × Fail



# Black Background



This preview shows how the XYZ color 41.4463, 40.0452, 40.1954 looks on a black background.

## Color Contrast Check

Large Text (above 18pt) WCAG AA ✓ Pass

Any Text WCAG AA ✓ Pass

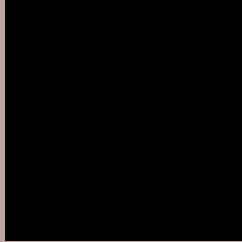
Large Text (above 18pt) WCAG AAA ✓ Pass

Any Text WCAG AAA ✓ Pass

If you want to check with other color combinations, try the [Color Contrast Checker](#).

# XYZ 41.4463, 40.0452, 40.1954

## Background



This preview shows how black text looks on a background with the XYZ color 41.4463, 40.0452, 40.1954.



This preview shows how white text looks on a background with the XYZ color 41.4463, 40.0452,



# Color Blindness Simulation

Color vision deficiency is a very complex topic, and I could not describe the different causes any better than Wikipedia does, so if you want to learn more, you should check out their [article about color blindness](#).

## Dichromacy



### Original Color

41.4463, 40.0452, 40.1954

### Protanopia

38.5265, 40.1278, 41.7913

### Deuteranopia

40.8726, 40.0141, 40.2196



## Tritanopia

42.3772, 39.8832, 45.5091

# Trichromacy



## Original Color

41.4463, 40.0452, 40.1954

## Protanomaly

39.6663, 40.1778, 41.2618

## Deuteranomaly

41.1215, 40.1424, 40.2313

## Tritanomaly

42.1683, 40.0804, 43.5440

# Monochromacy



## Original Color

41.4463, 40.0452, 40.1954

## Achromatopsia

39.2122, 41.2543, 44.9259

## Achromatomaly

39.9398, 40.8242, 43.3109

# CSS Examples

## Text

The CSS property to change the color of the text to XYZ 41.4463, 40.0452, 40.1954 is called "color". The color property can be set on classes, ids or directly on the HTML element.

This example shows how text in the color `rgb(192, 163, 163)` looks like.

```
.text, #text, p{  
    color:rgb(192, 163, 163)  
}
```

If you want to add a text shadow in that color use the text-shadow property, you can generate a text shadow directly with our [CSS Text Shadow Generator](#).

Here you see how black text with a 4 pixel rgb(192, 163, 163) colored shadow looks like.

```
.shadow{ text-shadow: 4px 4px 2px rgb(192, 163, 163) }
```

## Border

The CSS property to change the border of an element to XYZ 41.4463, 40.0452, 40.1954 is called "border". The border property can be set on classes, ids or directly on the HTML element.

This example shows the color as border, it can be applied via the CSS property "border" or "border-color".

```
.border, #border, table{ border:4px solid rgb(192, 163, 163) }
```



If only the border color should be changed use the property border-color.

```
.border{ border-color:rgb(192, 163, 163) }
```

If you want to add a box shadow in that color use:

Here you see how a box with a 4 pixel rgb(192, 163, 163) colored shadow looks like.

```
.boxshadow{ -moz-box-shadow:4px 4px 4px  
4px rgb(192, 163, 163); -webkit-box-  
shadow:4px 4px 4px 4px rgb(192, 163, 163);  
box-shadow:4px 4px 4px 4px rgb(192, 163,  
163) }
```

# Background

The CSS property to change the background color of an element to XYZ 41.4463, 40.0452, 40.1954 is called "background". The background property can be set on classes, ids or directly on the HTML element.

```
.background, #background, body{  
background: rgb(192, 163, 163) }
```

If only the background color should be changed can be used:

```
.background{ background-color: rgb(192,  
163, 163) }
```

This example shows the color as background, it is applied via the CSS property "background".

To optimize and compress your CSS code, you can use our [online CSS compressor and optimizer](#) based on csstidy. If you want to create a linear or radial gradient as background or border, check our [CSS Gradient Generator](#).

Hey! You found this booklet interesting? Support Converting Colors with the new Membership Option!

The pro membership hides all ads, plus gives you double the colors in the color bucket, and more awesome pro features!

**[Learn more, Memberships starting at \\$2.50/m!](#)**

**Follow me  
on Twitter!**

@ConvertingColor