

Converting Colors

XYZ(41.5406, 27.8568, 37.6037)

Have a look what the booklet for
XYZ(41.5406, 27.8568, 37.6037)
contains.

XYZ(41.5853, 27.8744, 37.8388)	3
<i>Conversions</i>	4
<i>Details</i>	6
<i>Harmonies</i>	12
<i>Previews</i>	24
<i>Color Blindness Simulation</i>	28
<i>CSS Examples</i>	31

Color

**XYZ(41.5853, 27.8744,
37.8388)**

Conversions

Conversions Part 1

Format	Color
Hex	DE67A3
RGB	222, 103, 163
RGB Percent	87%, 40%, 64%
CMY	0.1294, 0.5961, 0.3608
CMYK	0.00, 0.54, 0.27, 0.13
HSL	330°, 64%, 64%
HSV	330°, 54%, 87%
XYZ	41.5853, 27.8744, 37.8388
YIQ	145.4210, 51.6640, 43.8880

Conversions

Conversions Part 2

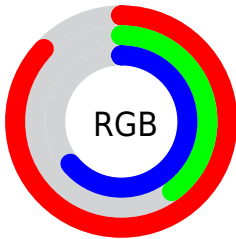
Format	Color
RYB	222, 103, 163
Decimal	14575523
CIELab	59.78, 52.96, -9.97
CIElCh	60, 53.893, 349.344
Yxy	27.8744, 0.3876, 0.2598
Android (android.graphics.Color)	4292765603 (0xFFDE67A3)
YUV	145.4210, 8.6664, 67.1598
Hunter-Lab	52.7962, 48.2034, -5.5355

Details

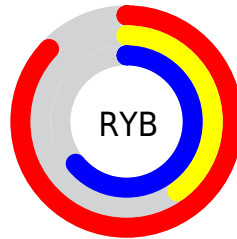
The XYZ color **41.5853, 27.8744, 37.8388** is a light color, and the websafe version is hex **CC6699**. A complement of this color would be **38.2378, 57.7356, 43.3141**, and the grayscale version is **27.0369, 28.4449, 30.9765**.

A 20% lighter version of the original color is **66.1217, 50.7757, 72.6454**, and **19.2360, 11.1541, 16.1780** is the 20% darker color. If you saturate the color by 10%, you get **38.7193, 23.6526, 32.2275**, and if you desaturate by 10%, it is **45.1248, 33.3055, 44.0987**.

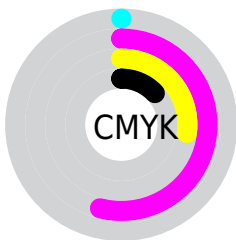
Distribution



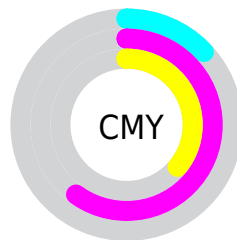
- Red (87%)
- Green (40%)
- Blue (64%)



- Red (87%)
- Yellow (40%)
- Blue (64%)



- Cyan (0%)
- Magenta (54%)
- Yellow (27%)
- Black (13%)



- Cyan (13%)
- Magenta (60%)
- Yellow (36%)

Brightness & Saturation Gradients

These gradients show how the XYZ color 41.5853, 27.8744, 37.8388 changes by changing the brightness by 10 percent. The first figure shows a shift by +10% for each color and the second figure -10%.

Similar to the brightness gradients but the following saturation gradients show a change of the XYZ color 41.5853, 27.8744, 37.8388 by changing the saturation by 10% instead.

41.5853, 27.8744,
37.8388

41.5853, 27.8744,
37.8388

343.7819,
291.8663, 352.2054

28.9664, 18.2310,
25.5567

76.8407, 56.2839,
73.0617

19.1996, 11.1160,
16.2695

100.2079, 75.8187,
96.8396

11.9194, 6.1449,
9.5587

127.8886, 99.4195,
125.2865

6.7606, 2.9334,
5.0056

160.2482,
127.4706, 158.8210

3.3579, 1.0971,
2.1917

197.6519,
160.3564, 197.8616

1.3457, 0.0000,
0.6696

240.4652,

0.2170, 0.0000,

198.4614, 242.8268

0.0000

289.0534,
242.1699, 294.1352

■ 0.0000, 0.0000,
0.0000

■ 41.5853, 27.8744,
37.8388

■ 41.5853, 27.8744,
37.8388

■ 38.7193, 23.6526,
32.2275

■ 45.1248, 33.3055,
44.0987

■ 36.4748, 20.5399,
27.2360

■ 49.3799, 40.0272,
51.0307

■ 34.7954, 18.4273,
22.8345

■ 54.3917, 48.1183,
58.6589

■ 33.6122, 17.1805,
18.9884

■ 60.1976, 57.6505,
67.0054

■ 33.0449, 16.6979,
16.7895

■ 66.8323, 68.6900,
76.0910

■ 74.3283, 81.2992,
85.9359

■ 81.6201, 93.3440,
96.1935

■ 83.3062, 94.0184,
105.0720

■ 83.9343, 94.2697,
108.3798

Harmonies

Analogous

The Analogous color harmony consists of three colors that are next to each other on the color wheel.



37.7405, 27.8744, 61.9868



41.5853, 27.8744, 37.8388



40.8946, 27.8744, 19.5317

Triad

The Triadic color harmony groups three colors that are evenly spaced from another and form a triangle on the color wheel.



41.5853, 27.8744, 37.8388



22.3827, 27.8744, 6.9154



18.8350, 27.8744, 68.6918

Complementary

The Complementary color scheme is a pair of colors which are on the opposite of each other on the color wheel.



41.5853, 27.8744, 37.8388



38.2378, 57.7356, 43.3141

Split Complementary

Split-complementary colors differ from the complementary color scheme. The scheme consists of three colors, the original color and two neighbors of the complement color.



15.9460, 27.8744, 44.5692



41.5853, 27.8744, 37.8388



17.7379, 27.8744, 11.8673

Square

The Square scheme is like the rectangle color scheme, but the four colors are evenly spaced on the color wheel.



41.5853, 27.8744, 37.8388



28.9936, 27.8744, 6.3804



15.5822, 27.8744, 23.9217



24.1420, 27.8744, 84.2484

Rectangle

The Rectangle color scheme consists of four colors that form a rectangle on the color wheel.



41.5853, 27.8744, 37.8388



37.9853, 27.8744, 12.2230



15.5822, 27.8744, 23.9217



17.5907, 27.8744, 60.9326

Sweetspot

The Sweet Spot groups the original color and five complimentary colors.



41.5861, 27.8758, 37.8393



80.2995, 75.4393, 88.7525



32.6372, 22.5030, 71.7309



16.8274, 15.5549, 18.4830



0.0000, 0.0000, 0.0000



20.3446, 21.4041, 23.3091

Same Dimension

The Same Dimension uses a secret algorithm to generate beautiful new colors.



41.5861, 27.8758, 37.8393



52.6978, 31.9389, 43.4736



37.5245, 26.2511, 16.4510



13.9941, 13.8153, 15.7390



19.6842, 9.9407, 10.2688



1.4096, 0.7071, 0.9498

Inverse Universe

The Inverse Universe completely reimagines the original color for something new.



41.5861, 27.8758, 37.8393



52.6978, 31.9389, 43.4736



44.6362, 60.2949, 77.0076



13.9941, 13.8153, 15.7390



19.6842, 9.9407, 10.2688



1.4096, 0.7071, 0.9498

Previews

White Background



This preview shows how the XYZ color 41.5853, 27.8744, 37.8388 looks on a white background.

Color Contrast Check

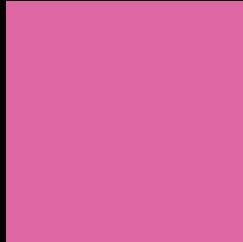
Large Text (above 18pt) WCAG AA ✓ Pass

Any Text WCAG AA × Fail

Large Text (above 18pt) WCAG AAA × Fail

Any Text WCAG AAA × Fail

Black Background



This preview shows how the XYZ color 41.5853, 27.8744, 37.8388 looks on a black background.

Color Contrast Check

Large Text (above 18pt) WCAG AA ✓ Pass

Any Text WCAG AA ✓ Pass

Large Text (above 18pt) WCAG AAA ✓ Pass

Any Text WCAG AAA × Fail

If you want to check with other color combinations, try the [Color Contrast Checker](#).

XYZ 41.5853, 27.8744, 37.8388

Background



This preview shows how black text looks on a background with the XYZ color 41.5853, 27.8744, 37.8388.



This preview shows how white text looks on a background with the XYZ color 41.5853, 27.8744,

Color Blindness Simulation

Color vision deficiency is a very complex topic, and I could not describe the different causes any better than Wikipedia does, so if you want to learn more, you should check out their [article about color blindness](#).

Dichromacy



Original Color

41.5853, 27.8744, 37.8388

Protanopia

28.6324, 28.2682, 52.6624

Deuteranopia

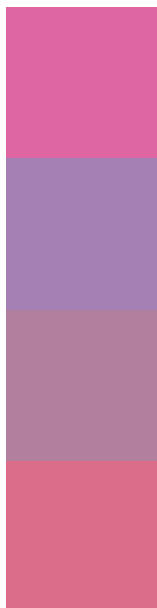
28.6008, 27.9628, 35.7882



Tritanopia

38.0978, 27.8498, 21.1369

Trichromacy



Original Color

41.5853, 27.8744, 37.8388

Protanomaly

31.4744, 26.7330, 46.6811

Deuteranomaly

32.2075, 27.1469, 36.3432

Tritanomaly

39.1260, 27.7749, 26.5915

Monochromacy



Original Color

41.5853, 27.8744, 37.8388

Achromatopsia

26.9133, 28.3149, 30.8349

Achromatomaly

30.8837, 27.1165, 33.3120

CSS Examples

Text

The CSS property to change the color of the text to XYZ 41.5853, 27.8744, 37.8388 is called "color". The color property can be set on classes, ids or directly on the HTML element.

This example shows how text in the color `rgb(222, 103, 163)` looks like.

```
.text, #text, p{  
    color:rgb(222, 103, 163)  
}
```

If you want to add a text shadow in that color use the text-shadow property, you can generate a text shadow directly with our [CSS Text Shadow Generator](#).

Here you see how black text with a 4 pixel rgb(222, 103, 163) colored shadow looks like.

```
.shadow{ text-shadow: 4px 4px 2px rgb(222, 103, 163) }
```

Border

The CSS property to change the border of an element to XYZ 41.5853, 27.8744, 37.8388 is called "border". The border property can be set on classes, ids or directly on the HTML element.

This example shows the color as border, it can be applied via the CSS property "border" or "border-color".

```
.border, #border, table{ border:4px solid rgb(222, 103, 163) }
```


If only the border color should be changed use the property `border-color`.

```
.border{ border-color:rgb(222, 103, 163) }
```

If you want to add a box shadow in that color use:

Here you see how a box with a 4 pixel `rgb(222, 103, 163)` colored shadow looks like.

```
.boxshadow{ -moz-box-shadow:4px 4px 4px  
4px rgb(222, 103, 163); -webkit-box-  
shadow:4px 4px 4px 4px rgb(222, 103, 163);  
box-shadow:4px 4px 4px 4px rgb(222, 103,  
163) }
```

Background

The CSS property to change the background color of an element to XYZ 41.5853, 27.8744, 37.8388 is called "background". The background property can be set on classes, ids or directly on the HTML element.

```
.background, #background, body{  
background: rgb(222, 103, 163) }
```

If only the background color should be changed can be used:

```
.background{ background-color: rgb(222,  
103, 163) }
```

This example shows the color as background, it is applied via the CSS property "background".

To optimize and compress your CSS code, you can use our [online CSS compressor and optimizer](#) based on csstidy. If you want to create a linear or radial gradient as background or border, check our [CSS Gradient Generator](#).

Hey! You found this booklet interesting? Support Converting Colors with the new Membership Option!

The pro membership hides all ads, plus gives you double the colors in the color bucket, and more awesome pro features!

[Learn more, Memberships starting at \\$2.50/m!](#)

**Follow me
on Twitter!**

@ConvertingColor