

Converting Colors

XYZ(41.5553, 39.3471, 38.9830)

Have a look what the booklet for
XYZ(41.5553, 39.3471, 38.9830)
contains.

XYZ(41.5095, 39.3169, 39.1194)	3
<i>Conversions</i>	4
<i>Details</i>	6
<i>Harmonies</i>	12
<i>Previews</i>	24
<i>Color Blindness Simulation</i>	28
<i>CSS Examples</i>	31

Color

**XYZ(41.5095, 39.3169,
39.1194)**

Conversions

Conversions Part 1

Format	Color
Hex	C3A0A1
RGB	195, 160, 161
RGB Percent	76%, 63%, 63%
CMY	0.2353, 0.3725, 0.3686
CMYK	0.00, 0.18, 0.17, 0.24
HSL	358°, 23%, 70%
HSV	358°, 18%, 76%
XYZ	41.5095, 39.3169, 39.1194
YIQ	170.5790, 20.5390, 7.7310

Conversions

Conversions Part 2

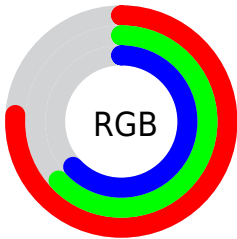
Format	Color
R_{YB}	195, 160, 161
Decimal	12820641
CIE _{Lab}	68.98, 13.06, 4.34
CIE _{LCh}	69, 13.757, 18.376
Yxy	39.3169, 0.3461, 0.3278
Android (android.graphics.Color)	4291010721 (0xFFC3A0A1)
YUV	170.5790, -4.7224, 21.4172
Hunter-Lab	62.7032, 8.4364, 6.9023

Details

The XYZ color **41.5095, 39.3169, 39.1194** is a light color, and the websafe version is hex **CC9999**. A complement of this color would be **43.7514, 50.3998, 58.4635**, and the grayscale version is **38.5142, 40.5199, 44.1262**.

A 20% lighter version of the original color is **76.8400, 74.2542, 75.2483**, and **19.1615, 17.5136, 17.1224** is the 20% darker color. If you saturate the color by 10%, you get **36.8446, 32.4609, 29.9371**, and if you desaturate by 10%, it is **46.9600, 47.3382, 49.8133**.

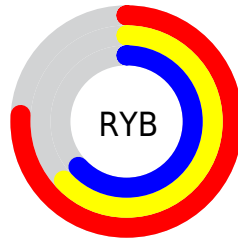
Distribution



Red (76%)

Green (63%)

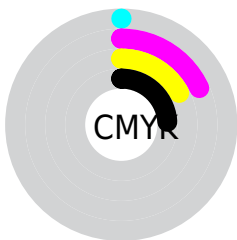
Blue (63%)



Red (76%)

Yellow (63%)

Blue (63%)

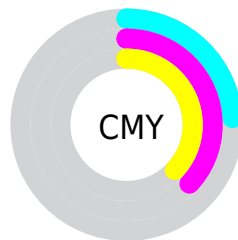


Cyan (0%)

Magenta (18%)

Yellow (17%)

Black (24%)



Cyan (24%)

Magenta (37%)

Yellow (37%)

Brightness & Saturation Gradients

These gradients show how the XYZ color 41.5095, 39.3169, 39.1194 changes by changing the brightness by 10 percent. The first figure shows a shift by +10% for each color and the second figure -10%.

Similar to the brightness gradients but the following saturation gradients show a change of the XYZ color 41.5095, 39.3169, 39.1194 by changing the saturation by 10% instead.

■ 41.5095, 39.3169,
39.1194

■ 41.5095, 39.3169,
39.1194

343.4719,
343.2359, 357.8390

■ 28.9068, 27.0063,
26.5441

■ 76.7266, 74.1222,
75.0430

■ 19.1543, 17.5780,
17.0017

■ 100.0717, 97.3857,
99.2284

■ 11.8865, 10.6474,
10.0737

127.7283,
125.0690, 128.1209

■ 6.7381, 5.8303,
5.3416

160.0618,
157.5565, 162.1391

■ 3.3437, 2.7422,
2.3868

197.4376,
195.2325, 201.7014

■ 1.3380, 0.9987,
0.7793

240.2210,

■ 0.2114, 0.0000,

238.4815, 247.2265

0.0000

288.7773,
287.6878, 299.1328

■ 0.0000, 0.0000,
0.0000

■ 41.5095, 39.3169,
39.1194

■ 41.5095, 39.3169,
39.1194

■ 36.8446, 32.4609,
29.9371

■ 46.9600, 47.3382,
49.8133

■ 32.9259, 26.7109,
22.1959

■ 53.2265, 56.5697,
62.0801

■ 29.7158, 22.0107,
15.8235

■ 60.3417, 67.0606,
75.9805

■ 27.1720, 18.2969,
10.7402

■ 68.3358, 78.8557,
91.5716

■ 25.2476, 15.4992,
6.8582

■ 76.3158, 90.3422,
108.0233

■ 23.8897, 13.5382,
4.0787

■ 23.0366, 12.3209,
2.2871

■ 22.6010, 11.7098,
1.3402

■ 22.5363, 11.6143,
1.2135

Harmonies

Analogous

The Analogous color harmony consists of three colors that are next to each other on the color wheel.



41.6473, 39.3169, 45.2855



41.5095, 39.3169, 39.1194



40.2367, 39.3169, 34.4132

Triad

The Triadic color harmony groups three colors that are evenly spaced from another and form a triangle on the color wheel.



41.5095, 39.3169, 39.1194



34.3096, 39.3169, 35.2887



36.5275, 39.3169, 55.7403

Complementary

The Complementary color scheme is a pair of colors which are on the opposite of each other on the color wheel.



41.5095, 39.3169, 39.1194



43.7514, 50.3998, 58.4635

Split Complementary

Split-complementary colors differ from the complementary color scheme. The scheme consists of three colors, the original color and two neighbors of the complement color.



34.6419, 39.3169, 52.4709



41.5095, 39.3169, 39.1194



33.3952, 39.3169, 40.4253

Square

The Square scheme is like the rectangle color scheme, but the four colors are evenly spaced on the color wheel.



41.5095, 39.3169, 39.1194



36.0578, 39.3169, 32.3550



33.5144, 39.3169, 46.7245



38.7127, 39.3169, 55.3032

Rectangle

The Rectangle color scheme consists of four colors that form a rectangle on the color wheel.



41.5095, 39.3169, 39.1194



38.9428, 39.3169, 32.5494



33.5144, 39.3169, 46.7245



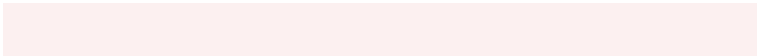
35.8392, 39.3169, 55.0264

Sweetspot

The Sweet Spot groups the original color and five complimentary colors.



41.5106, 39.3187, 39.1202



87.1734, 89.3006, 95.2260



44.6276, 40.5308, 57.1012



18.9198, 19.3051, 20.5200



0.0000, 0.0000, 0.0000



20.3446, 21.4041, 23.3091

Same Dimension

The Same Dimension uses a secret algorithm to generate beautiful new colors.



41.5106, 39.3187, 39.1202



70.5041, 64.7716, 62.5107



44.4427, 45.3231, 39.6657



10.0846, 10.0824, 10.5359



14.6526, 7.5508, 0.8165



0.6372, 0.3279, 0.0568

Inverse Universe

The Inverse Universe completely reimagines the original color for something new.



41.5106, 39.3187, 39.1202



70.5041, 64.7716, 62.5107



40.4024, 43.5220, 57.9013



10.0846, 10.0824, 10.5359



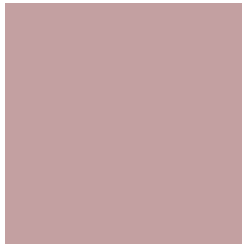
14.6526, 7.5508, 0.8165



0.6372, 0.3279, 0.0568

Previews

White Background



This preview shows how the XYZ color 41.5095, 39.3169, 39.1194 looks on a white background.

Color Contrast Check

Large Text (above 18pt) WCAG AA × Fail

Any Text WCAG AA × Fail

Large Text (above 18pt) WCAG AAA × Fail

Any Text WCAG AAA × Fail

Black Background



This preview shows how the XYZ color 41.5095, 39.3169, 39.1194 looks on a black background.

Color Contrast Check

Large Text (above 18pt) WCAG AA ✓ Pass

Any Text WCAG AA ✓ Pass

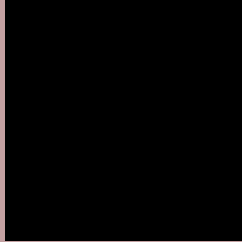
Large Text (above 18pt) WCAG AAA ✓ Pass

Any Text WCAG AAA ✓ Pass

If you want to check with other color combinations, try the [Color Contrast Checker](#).

XYZ 41.5095, 39.3169, 39.1194

Background



This preview shows how black text looks on a background with the XYZ color 41.5095, 39.3169, 39.1194.



This preview shows how white text looks on a background with the XYZ color 41.5095, 39.3169,

Color Blindness Simulation

Color vision deficiency is a very complex topic, and I could not describe the different causes any better than Wikipedia does, so if you want to learn more, you should check out their [article about color blindness](#).

Dichromacy



Original Color

41.5095, 39.3169, 39.1194

Protanopia

37.8074, 39.4925, 41.2275

Deuteranopia

40.1814, 39.4238, 38.7495



Tritanopia

42.3425, 39.1298, 43.8492

Trichromacy



Original Color

41.5095, 39.3169, 39.1194

Protanomaly

38.9784, 39.2939, 40.6521

Deuteranomaly

40.7514, 39.4551, 38.7255

Tritanomaly

42.1381, 39.3221, 41.9282

Monochromacy



Original Color

41.5095, 39.3169, 39.1194

Achromatopsia

38.7082, 40.7240, 44.3485

Achromatomaly

39.6162, 40.1308, 42.2172

CSS Examples

Text

The CSS property to change the color of the text to XYZ 41.5095, 39.3169, 39.1194 is called "color". The color property can be set on classes, ids or directly on the HTML element.

This example shows how text in the color `rgb(195, 160, 161)` looks like.

```
.text, #text, p{  
    color:rgb(195, 160, 161)  
}
```

If you want to add a text shadow in that color use the text-shadow property, you can generate a text shadow directly with our [CSS Text Shadow Generator](#).

Here you see how black text with a 4 pixel rgb(195, 160, 161) colored shadow looks like.

```
.shadow{ text-shadow: 4px 4px 2px rgb(195, 160, 161) }
```

Border

The CSS property to change the border of an element to XYZ 41.5095, 39.3169, 39.1194 is called "border". The border property can be set on classes, ids or directly on the HTML element.

This example shows the color as border, it can be applied via the CSS property "border" or "border-color".

```
.border, #border, table{ border:4px solid rgb(195, 160, 161) }
```


If only the border color should be changed use the property `border-color`.

```
.border{ border-color:rgb(195, 160, 161) }
```

If you want to add a box shadow in that color use:

Here you see how a box with a 4 pixel `rgb(195, 160, 161)` colored shadow looks like.

```
.boxshadow{ -moz-box-shadow:4px 4px 4px  
4px rgb(195, 160, 161); -webkit-box-  
shadow:4px 4px 4px 4px rgb(195, 160, 161);  
box-shadow:4px 4px 4px 4px rgb(195, 160,  
161) }
```

Background

The CSS property to change the background color of an element to XYZ 41.5095, 39.3169, 39.1194 is called "background". The background property can be set on classes, ids or directly on the HTML element.

```
.background, #background, body{  
background: rgb(195, 160, 161) }
```

If only the background color should be changed can be used:

```
.background{ background-color: rgb(195,  
160, 161) }
```

This example shows the color as background, it is applied via the CSS property "background".

To optimize and compress your CSS code, you can use our [online CSS compressor and optimizer](#) based on csstidy. If you want to create a linear or radial gradient as background or border, check our [CSS Gradient Generator](#).

Hey! You found this booklet interesting? Support Converting Colors with the new Membership Option!

The pro membership hides all ads, plus gives you double the colors in the color bucket, and more awesome pro features!

[Learn more, Memberships starting at \\$2.50/m!](#)

**Follow me
on Twitter!**

@ConvertingColor