

Converting Colors

XYZ(41.5995, 28.9575, 35.6088)

Have a look what the booklet for
XYZ(41.5995, 28.9575, 35.6088)
contains.

XYZ(41.5663, 28.9926, 35.7531)	3
<i>Conversions</i>	4
<i>Details</i>	6
<i>Harmonies</i>	12
<i>Previews</i>	24
<i>Color Blindness Simulation</i>	28
<i>CSS Examples</i>	31

Color

**XYZ(41.5663, 28.9926,
35.7531)**

Conversions

Conversions Part 1

Format	Color
Hex	DD6E9E
RGB	221, 110, 158
RGB Percent	87%, 43%, 62%
CMY	0.1333, 0.5686, 0.3804
CMYK	0.00, 0.50, 0.29, 0.13
HSL	334°, 62%, 65%
HSV	334°, 50%, 87%
XYZ	41.5663, 28.9926, 35.7531
YIQ	148.6610, 50.7480, 38.4600

Conversions

Conversions Part 2

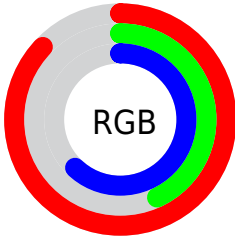
Format	Color
R _Y B	221, 110, 158
Decimal	14511774
CIE Lab	60.78, 48.60, -5.61
CIE LCh	61, 48.918, 353.416
Yxy	28.9926, 0.3910, 0.2727
Android (android.graphics.Color)	4292701854 (0xFFDD6E9E)
YUV	148.6610, 4.6041, 63.4413
Hunter-Lab	53.8448, 43.5674, -1.6774

Details

The XYZ color **41.5663, 28.9926, 35.7531** is a light color, and the websafe version is hex **CC6699**. A complement of this color would be **39.8311, 58.0459, 48.6428**, and the grayscale version is **28.3920, 29.8706, 32.5290**.

A 20% lighter version of the original color is **66.7054, 52.9744, 69.6601**, and **19.2212, 11.7743, 15.1695** is the 20% darker color. If you saturate the color by 10%, you get **38.4471, 24.3947, 29.6554**, and if you desaturate by 10%, it is **45.3919, 34.8265, 42.6306**.

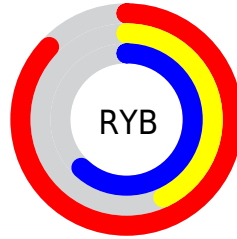
Distribution



Red (87%)

Green (43%)

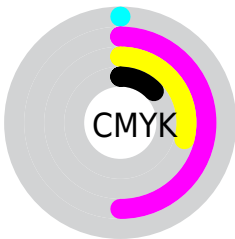
Blue (62%)



Red (87%)

Yellow (43%)

Blue (62%)

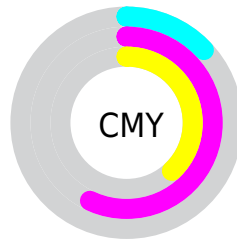


Cyan (0%)

Magenta (50%)

Yellow (29%)

Black (13%)



Cyan (13%)

Magenta (57%)

Yellow (38%)

Brightness & Saturation Gradients

These gradients show how the XYZ color 41.5663, 28.9926, 35.7531 changes by changing the brightness by 10 percent. The first figure shows a shift by +10% for each color and the second figure -10%.

Similar to the brightness gradients but the following saturation gradients show a change of the XYZ color 41.5663, 28.9926, 35.7531 by changing the saturation by 10% instead.

41.5663, 28.9926,
35.7531

41.5663, 28.9926,
35.7531

343.7042,
297.1800, 342.8848

28.9515, 19.0752,
23.9554

76.8121, 58.0653,
69.8156

19.1882, 11.7246,
15.0886

100.1738, 77.9895,
92.9174

11.9112, 6.5565,
8.7343

127.8485,
102.0180, 120.6243

6.7550, 3.1863,
4.4738

160.2015,
130.5353, 153.3550

3.3543, 1.2298,
1.8887

197.5982,
163.9257, 191.5278

1.3438, 0.0858,
0.4855

240.4040,

0.2156, 0.0000,

202.5737, 235.5613

0.0000

288.9842,
246.8637, 285.8742

■ 0.0000, 0.0000,
0.0000

■ 41.5663, 28.9926,
35.7531

■ 41.5663, 28.9926,
35.7531

■ 38.4471, 24.3947,
29.6554

■ 45.3919, 34.8265,
42.6306

■ 35.9835, 20.9371,
24.3035

■ 49.9650, 41.9741,
50.3164

■ 34.1213, 18.5168,
19.6627


■ 55.3264, 50.5119,
58.8391

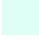
■ 32.7958, 17.0101,
15.6934


■ 61.5129, 60.5091,
68.2255

■ 31.9101, 16.2087,
12.4076

■ 68.5591, 72.0303,
78.5010

 76.4975, 85.1363,
89.6896

 82.1840, 93.5342,
100.7564

 83.6289, 94.1122,
108.3655

Harmonies

Analogous

The Analogous color harmony consists of three colors that are next to each other on the color wheel.



38.5802, 28.9926, 57.3582



41.5663, 28.9926, 35.7531



40.3604, 28.9926, 19.6021

Triad

The Triadic color harmony groups three colors that are evenly spaced from another and form a triangle on the color wheel.



41.5663, 28.9926, 35.7531



22.9798, 28.9926, 9.1121



20.8961, 28.9926, 68.8355

Complementary

The Complementary color scheme is a pair of colors which are on the opposite of each other on the color wheel.



41.5663, 28.9926, 35.7531



39.8311, 58.0459, 48.6428

Split Complementary

Split-complementary colors differ from the complementary color scheme. The scheme consists of three colors, the original color and two neighbors of the complement color.



17.7951, 28.9926, 47.6193



41.5663, 28.9926, 35.7531



18.8625, 28.9926, 14.9661

Square

The Square scheme is like the rectangle color scheme, but the four colors are evenly spaced on the color wheel.



41.5663, 28.9926, 35.7531



28.9816, 28.9926, 8.0024



17.1123, 28.9926, 27.7230



26.1791, 28.9926, 80.6610

Rectangle

The Rectangle color scheme consists of four colors that form a rectangle on the color wheel.



41.5663, 28.9926, 35.7531



37.4204, 28.9926, 13.1062



17.1123, 28.9926, 27.7230



19.5990, 28.9926, 62.2489

Sweetspot

The Sweet Spot groups the original color and five complimentary colors.



41.5671, 28.9940, 35.7537



80.7378, 76.6567, 87.8487



35.8399, 25.2468, 71.3911



16.8972, 15.7880, 18.2181



0.0000, 0.0000, 0.0000



20.3446, 21.4041, 23.3091

Same Dimension

The Same Dimension uses a secret algorithm to generate beautiful new colors.



41.5671, 28.9940, 35.7537



53.0740, 33.5958, 40.8104



39.0424, 29.3155, 18.3543



13.2886, 13.1446, 14.7812



18.5915, 9.4376, 7.4946



1.2471, 0.6285, 0.7103

Inverse Universe

The Inverse Universe completely reimagines the original color for something new.



41.5671, 28.9940, 35.7537



53.0740, 33.5958, 40.8104



43.4280, 56.4272, 77.0096



13.2886, 13.1446, 14.7812



18.5915, 9.4376, 7.4946



1.2471, 0.6285, 0.7103

Previews

White Background



This preview shows how the XYZ color 41.5663, 28.9926, 35.7531 looks on a white background.

Color Contrast Check

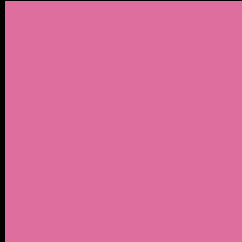
Large Text (above 18pt) WCAG AA ✓ Pass

Any Text WCAG AA × Fail

Large Text (above 18pt) WCAG AAA × Fail

Any Text WCAG AAA × Fail

Black Background



This preview shows how the XYZ color 41.5663, 28.9926, 35.7531 looks on a black background.

Color Contrast Check

Large Text (above 18pt) WCAG AA ✓ Pass

Any Text WCAG AA ✓ Pass

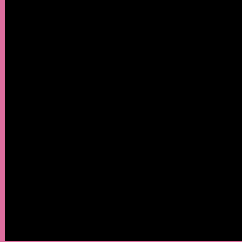
Large Text (above 18pt) WCAG AAA ✓ Pass

Any Text WCAG AAA × Fail

If you want to check with other color combinations, try the [Color Contrast Checker](#).

XYZ 41.5663, 28.9926, 35.7531

Background



This preview shows how black text looks on a background with the XYZ color 41.5663, 28.9926, 35.7531.



This preview shows how white text looks on a background with the XYZ color 41.5663, 28.9926,

Color Blindness Simulation

Color vision deficiency is a very complex topic, and I could not describe the different causes any better than Wikipedia does, so if you want to learn more, you should check out their [article about color blindness](#).

Dichromacy



Original Color

41.5663, 28.9926, 35.7531

Protanopia

29.2668, 29.3829, 47.8450

Deuteranopia

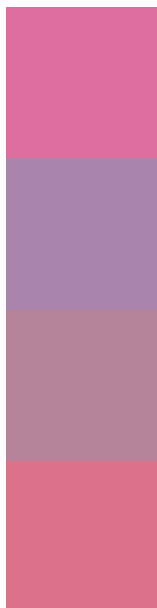
29.8703, 29.3158, 34.2212



Tritanopia

38.8605, 28.8769, 22.9277

Trichromacy



Original Color

41.5663, 28.9926, 35.7531

Protanomaly

32.2925, 28.2272, 43.2816

Deuteranomaly

33.3241, 28.5442, 34.7636

Tritanomaly

39.7461, 28.9008, 27.1505

Monochromacy



Original Color

41.5663, 28.9926, 35.7531

Achromatopsia

28.5667, 30.0544, 32.7292

Achromatomaly

32.0107, 28.7089, 33.5600

CSS Examples

Text

The CSS property to change the color of the text to XYZ 41.5663, 28.9926, 35.7531 is called "color". The color property can be set on classes, ids or directly on the HTML element.

This example shows how text in the color `rgb(221, 110, 158)` looks like.

```
.text, #text, p{  
    color:rgb(221, 110, 158)  
}
```

If you want to add a text shadow in that color use the text-shadow property, you can generate a text shadow directly with our [CSS Text Shadow Generator](#).

Here you see how black text with a 4 pixel rgb(221, 110, 158) colored shadow looks like.

```
.shadow{ text-shadow: 4px 4px 2px rgb(221, 110, 158) }
```

Border

The CSS property to change the border of an element to XYZ 41.5663, 28.9926, 35.7531 is called "border". The border property can be set on classes, ids or directly on the HTML element.

This example shows the color as border, it can be applied via the CSS property "border" or "border-color".

```
.border, #border, table{ border:4px solid rgb(221, 110, 158) }
```


If only the border color should be changed use the property `border-color`.

```
.border{ border-color:rgb(221, 110, 158) }
```

If you want to add a box shadow in that color use:

Here you see how a box with a 4 pixel `rgb(221, 110, 158)` colored shadow looks like.

```
.boxshadow{ -moz-box-shadow:4px 4px 4px  
4px rgb(221, 110, 158); -webkit-box-  
shadow:4px 4px 4px 4px rgb(221, 110, 158);  
box-shadow:4px 4px 4px 4px rgb(221, 110,  
158) }
```

Background

The CSS property to change the background color of an element to XYZ 41.5663, 28.9926, 35.7531 is called "background". The background property can be set on classes, ids or directly on the HTML element.

```
.background, #background, body{  
background: rgb(221, 110, 158) }
```

If only the background color should be changed can be used:

```
.background{ background-color: rgb(221,  
110, 158) }
```

This example shows the color as background, it is applied via the CSS property "background".

To optimize and compress your CSS code, you can use our [online CSS compressor and optimizer](#) based on csstidy. If you want to create a linear or radial gradient as background or border, check our [CSS Gradient Generator](#).

Hey! You found this booklet interesting? Support Converting Colors with the new Membership Option!

The pro membership hides all ads, plus gives you double the colors in the color bucket, and more awesome pro features!

[Learn more, Memberships starting at \\$2.50/m!](#)

**Follow me
on Twitter!**

@ConvertingColor