

Converting Colors

XYZ(41.6543, 40.5294, 40.9754)

Have a look what the booklet for
XYZ(41.6543, 40.5294, 40.9754)
contains.

XYZ(41.4622, 40.3076, 40.7168)	3
<i>Conversions</i>	4
<i>Details</i>	6
<i>Harmonies</i>	12
<i>Previews</i>	24
<i>Color Blindness Simulation</i>	28
<i>CSS Examples</i>	31

Color

**XYZ(41.4622, 40.3076,
40.7168)**

Conversions

Conversions Part 1

Format	Color
Hex	BFA4A4
RGB	191, 164, 164
RGB Percent	75%, 64%, 64%
CMY	0.2510, 0.3568, 0.3569
CMYK	0.00, 0.14, 0.14, 0.25
HSL	0°, 17%, 70%
HSV	0°, 14%, 75%
XYZ	41.4622, 40.3076, 40.7168
YIQ	172.0730, 16.0920, 5.7240

Conversions

Conversions Part 2

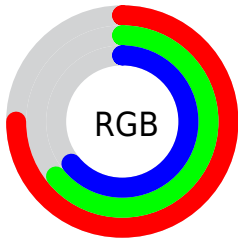
Format	Color
R_{YB}	191, 164, 164
Decimal	12559524
CIE _{Lab}	69.69, 9.86, 3.65
CIE _{LCh}	70, 10.514, 20.302
Yxy	40.3076, 0.3385, 0.3291
Android (android.graphics.Color)	4290749604 (0xFFBFA4A4)
YUV	172.0730, -3.9800, 16.5990
Hunter-Lab	63.4883, 5.4683, 6.4175

Details

The XYZ color **41.4622, 40.3076, 40.7168** is a light color, and the websafe version is hex **CC9999**. A complement of this color would be **43.3445, 48.9149, 56.4478**, and the grayscale version is **39.2643, 41.3091, 44.9857**.

A 20% lighter version of the original color is **76.8291, 75.7340, 77.5866**, and **19.0353, 18.0766, 17.8151** is the 20% darker color. If you saturate the color by 10%, you get **36.7005, 33.3401, 31.2490**, and if you desaturate by 10%, it is **46.9985, 48.4088, 51.7218**.

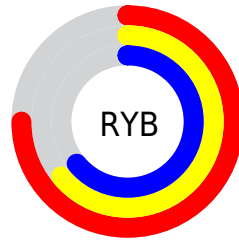
Distribution



Red (75%)

Green (64%)

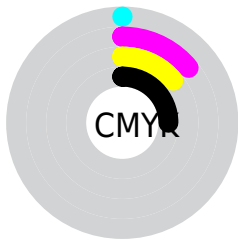
Blue (64%)



Red (75%)

Yellow (64%)

Blue (64%)

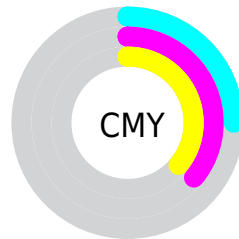


Cyan (0%)

Magenta (14%)

Yellow (14%)

Black (25%)



Cyan (25%)


Magenta (36%)


Yellow (36%)

Brightness & Saturation Gradients


These gradients show how the XYZ color 41.4622, 40.3076, 40.7168 changes by changing the brightness by 10 percent. The first figure shows a shift by +10% for each color and the second figure -10%.


Similar to the brightness gradients but the following saturation gradients show a change of the XYZ color 41.4622, 40.3076, 40.7168 by changing the saturation by 10% instead.


 41.4622, 40.3076,
40.7168

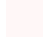
 41.4622, 40.3076,
40.7168


343.2784,
347.4184, 364.7771

 28.8697, 27.7785,
27.7798


 76.6553, 75.6317,
77.5028

 19.1260, 18.1587,
17.9222


 99.9866, 99.1954,
102.1889

 11.8659, 11.0640,
10.7253


127.6282,
127.2061, 131.6285

 6.7240, 6.1099,
5.7706

159.9455,
160.0482, 166.2400

 3.3349, 2.9120,
2.6396

197.3038,
198.1061, 206.4421

 1.3332, 1.0860,
0.9128

240.0685,

 0.2079, 0.0000,

241.7642, 252.6533

0.0000

288.6049,
291.4068, 305.2921

■ 0.0000, 0.0000,
0.0000

■ 41.4622, 40.3076,
40.7168

■ 41.4622, 40.3076,
40.7168

■ 36.7005, 33.3401,
31.2490

■ 46.9985, 48.4088,
51.7218

■ 32.6756, 27.4506,
23.2477

■ 53.3381, 57.6853,
64.3254

■ 29.3519, 22.5870,
16.6403

■ 60.5126, 68.1833,
78.5887

■ 26.6891, 18.6906,
11.3470

■ 68.5507, 79.9449,
94.5691

■ 24.6433, 15.6969,
7.2803

■ 75.2961, 89.8165,
107.9755

■ 23.1649, 13.5334,
4.3415

■ 22.1967, 12.1166,
2.4174

■ 21.6699, 11.3456,
1.3705

■ 21.4864, 11.0770,
1.0056

Harmonies

Analogous

The Analogous color harmony consists of three colors that are next to each other on the color wheel.



41.6274, 40.3076, 45.4856



41.4622, 40.3076, 40.7168



40.4391, 40.3076, 37.0664

Triad

The Triadic color harmony groups three colors that are evenly spaced from another and form a triangle on the color wheel.



41.4622, 40.3076, 40.7168



35.8486, 40.3076, 38.1712



37.7627, 40.3076, 53.7869

Complementary

The Complementary color scheme is a pair of colors which are on the opposite of each other on the color wheel.



41.4622, 40.3076, 40.7168



43.3445, 48.9149, 56.4478

Split Complementary

Split-complementary colors differ from the complementary color scheme. The scheme consists of three colors, the original color and two neighbors of the complement color.



36.2592, 40.3076, 51.4993



41.4622, 40.3076, 40.7168



35.1759, 40.3076, 42.3285

Square

The Square scheme is like the rectangle color scheme, but the four colors are evenly spaced on the color wheel.



41.4622, 40.3076, 40.7168



37.1872, 40.3076, 35.6739



35.3240, 40.3076, 47.2200



39.4575, 40.3076, 53.2753

Rectangle

The Rectangle color scheme consists of four colors that form a rectangle on the color wheel.



41.4622, 40.3076, 40.7168



39.4245, 40.3076, 35.6446



35.3240, 40.3076, 47.2200



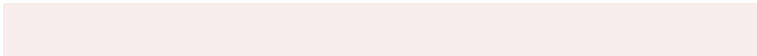
37.2190, 40.3076, 53.3137

Sweetspot

The Sweet Spot groups the original color and five complimentary colors.



41.4633, 40.3094, 40.7177



84.2509, 86.8124, 92.7865



44.1659, 41.3895, 54.9520



18.3236, 18.8041, 20.0230



92.9021, 97.7402, 106.4391



19.4759, 20.4902, 22.3138

Same Dimension

The Same Dimension uses a secret algorithm to generate beautiful new colors.



41.4633, 40.3094, 40.7177



71.4416, 68.0692, 67.3213



44.0084, 45.3995, 41.5660



9.5303, 9.5366, 9.9151



14.1204, 7.2797, 0.6609



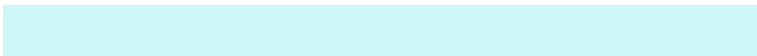
0.5531, 0.2852, 0.0259

Inverse Universe

The Inverse Universe completely reimagines the original color for something new.



43.3445, 48.9149, 56.4478



75.4687, 86.4916, 100.9960



40.5355, 43.2969, 55.5115



9.8085, 10.8094, 12.2417



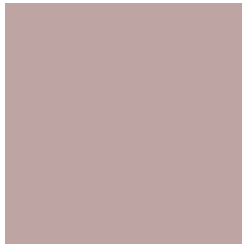
18.4208, 26.9533, 36.6245



0.7216, 1.0558, 1.4346

Previews

White Background



This preview shows how the XYZ color 41.4622, 40.3076, 40.7168 looks on a white background.

Color Contrast Check

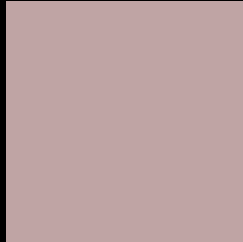
Large Text (above 18pt) WCAG AA × Fail

Any Text WCAG AA × Fail

Large Text (above 18pt) WCAG AAA × Fail

Any Text WCAG AAA × Fail

Black Background



This preview shows how the XYZ color 41.4622, 40.3076, 40.7168 looks on a black background.

Color Contrast Check

Large Text (above 18pt) WCAG AA ✓ Pass

Any Text WCAG AA ✓ Pass

Large Text (above 18pt) WCAG AAA ✓ Pass

Any Text WCAG AAA ✓ Pass

If you want to check with other color combinations, try the [Color Contrast Checker](#).

XYZ 41.4622, 40.3076, 40.7168

Background



This preview shows how black text looks on a background with the XYZ color 41.4622, 40.3076, 40.7168.



This preview shows how white text looks on a background with the XYZ color 41.4622, 40.3076,

Color Blindness Simulation

Color vision deficiency is a very complex topic, and I could not describe the different causes any better than Wikipedia does, so if you want to learn more, you should check out their [article about color blindness](#).

Dichromacy



Original Color

41.4622, 40.3076, 40.7168

Protanopia

38.8053, 40.5381, 42.3386

Deuteranopia

41.1422, 40.4094, 40.7533



Tritanopia

42.3964, 40.1423, 46.0711

Trichromacy



Original Color

41.4622, 40.3076, 40.7168

Protanomaly

39.7080, 40.4617, 41.7935

Deuteranomaly

41.3912, 40.5378, 40.7650

Tritanomaly

42.1861, 40.3411, 44.0912

Monochromacy



Original Color

41.4622, 40.3076, 40.7168

Achromatopsia

39.2122, 41.2543, 44.9259

Achromatomaly

39.9398, 40.8242, 43.3109

CSS Examples

Text

The CSS property to change the color of the text to XYZ 41.4622, 40.3076, 40.7168 is called "color". The color property can be set on classes, ids or directly on the HTML element.

This example shows how text in the color `rgb(191, 164, 164)` looks like.

```
.text, #text, p{  
    color:rgb(191, 164, 164)  
}
```

If you want to add a text shadow in that color use the text-shadow property, you can generate a text shadow directly with our [CSS Text Shadow Generator](#).

Here you see how black text with a 4 pixel rgb(191, 164, 164) colored shadow looks like.

```
.shadow{ text-shadow: 4px 4px 2px rgb(191, 164, 164) }
```

Border

The CSS property to change the border of an element to XYZ 41.4622, 40.3076, 40.7168 is called "border". The border property can be set on classes, ids or directly on the HTML element.

This example shows the color as border, it can be applied via the CSS property "border" or "border-color".

```
.border, #border, table{ border:4px solid rgb(191, 164, 164) }
```


If only the border color should be changed use the property `border-color`.

```
.border{ border-color:rgb(191, 164, 164) }
```

If you want to add a box shadow in that color use:

Here you see how a box with a 4 pixel `rgb(191, 164, 164)` colored shadow looks like.

```
.boxshadow{ -moz-box-shadow:4px 4px 4px  
4px rgb(191, 164, 164); -webkit-box-  
shadow:4px 4px 4px 4px rgb(191, 164, 164);  
box-shadow:4px 4px 4px 4px rgb(191, 164,  
164) }
```

Background

The CSS property to change the background color of an element to XYZ 41.4622, 40.3076, 40.7168 is called "background". The background property can be set on classes, ids or directly on the HTML element.

```
.background, #background, body{  
background: rgb(191, 164, 164) }
```

If only the background color should be changed can be used:

```
.background{ background-color: rgb(191,  
164, 164) }
```

This example shows the color as background, it is applied via the CSS property "background".

To optimize and compress your CSS code, you can use our [online CSS compressor and optimizer](#) based on csstidy. If you want to create a linear or radial gradient as background or border, check our [CSS Gradient Generator](#).

Hey! You found this booklet interesting? Support Converting Colors with the new Membership Option!

The pro membership hides all ads, plus gives you double the colors in the color bucket, and more awesome pro features!

[Learn more, Memberships starting at \\$2.50/m!](#)

**Follow me
on Twitter!**

@ConvertingColor