

# Converting Colors

XYZ(41.6580, 36.2349, 28.3910)

Have a look what the booklet for  
XYZ(41.6580, 36.2349, 28.3910)  
contains.

<b>XYZ(41.6582, 36.2128, 28.4611)</b> .....	3
<i><b>Conversions</b></i> .....	4
<i><b>Details</b></i> .....	6
<i><b>Harmonies</b></i> .....	12
<i><b>Previews</b></i> .....	24
<i><b>Color Blindness Simulation</b></i> .....	28
<i><b>CSS Examples</b></i> .....	31

# Color

**XYZ(41.6582, 36.2128,  
28.4611)**

# Conversions

## Conversions Part 1

Format	Color
Hex	D39289
RGB	211, 146, 137
RGB Percent	83%, 57%, 54%
CMY	0.1725, 0.4274, 0.4627
CMYK	0.00, 0.31, 0.35, 0.17
HSL	7°, 46%, 68%
HSV	7°, 35%, 83%
XYZ	41.6582, 36.2128, 28.4611
YIQ	164.4090, 41.6290, 10.9810

# Conversions

## Conversions Part 2

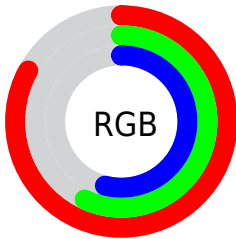
Format	Color
R <sub>Y</sub> B	211, 147, 137
Decimal	13865609
CIE Lab	66.68, 23.41, 14.68
CIE LCh	67, 27.634, 32.084
Yxy	36.2128, 0.3918, 0.3406
Android (android.graphics.Color)	4292055689 (0xFFD39289)
YUV	164.4090, -13.5126, 40.8603
Hunter-Lab	60.1771, 18.2586, 14.0824

# Details

The XYZ color **41.6582, 36.2128, 28.4611** is a light color, and the websafe version is hex **CC9999**. A complement of this color would be **43.1941, 52.2607, 69.4387**, and the grayscale version is **35.5309, 37.3812, 40.7082**.

A 20% lighter version of the original color is **71.1885, 66.2863, 57.7577**, and **19.3301, 15.8411, 11.0557** is the 20% darker color. If you saturate the color by 10%, you get **37.6612, 30.4088, 20.3774**, and if you desaturate by 10%, it is **46.4162, 43.0649, 38.2594**.

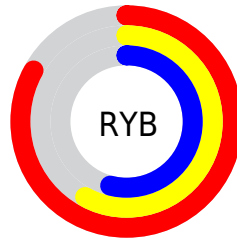
# Distribution



Red (83%)

Green (57%)

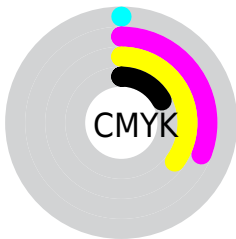
Blue (54%)



Red (83%)

Yellow (58%)

Blue (54%)

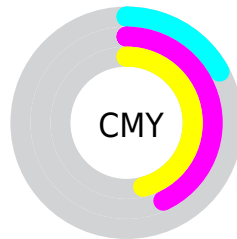


Cyan (0%)

Magenta (31%)

Yellow (35%)

Black (17%)



Cyan (17%)

Magenta (43%)


Yellow (46%)


# Brightness & Saturation Gradients

These gradients show how the XYZ color 41.6582, 36.2128, 28.4611 changes by changing the brightness by 10 percent. The first figure shows a shift by +10% for each color and the second figure -10%.


Similar to the brightness gradients but the following saturation gradients show a change of the XYZ color 41.6582, 36.2128, 28.4611 by changing the saturation by 10% instead.





 41.6582, 36.2128,  
28.4611


 41.6582, 36.2128,  
28.4611


344.0799,  
329.8897, 308.6447

 29.0237, 24.5986,  
18.4315


 76.9505, 69.3604,  
58.2517

 19.2431, 15.7782,  
11.0876


 100.3389, 91.6626,  
78.8498

 11.9511, 9.3674,  
6.0109


 128.0428,  
118.2962, 103.8077

 6.7824, 4.9816,  
2.7828

160.4273,  
149.6456, 133.5441

 3.3715, 2.2365,  
0.9848

197.8580,  
186.0953, 168.4774

 1.3531, 0.7398,  
0.0000

240.7000,

 0.2225, 0.0000,

228.0296, 209.0263

0.0000

289.3189,  
275.8329, 255.6092

■ 0.0000, 0.0000,  
0.0000

■ 41.6582, 36.2128,  
28.4611

■ 41.6582, 36.2128,  
28.4611

■ 37.6612, 30.4088,  
20.3774

■ 46.4162, 43.0649,  
38.2594

■ 34.3828, 25.5961,  
13.9075

■ 51.9691, 51.0078,  
49.8611

■ 31.7806, 21.7206,  
8.9434

■ 58.3521, 60.0881,  
63.3511

■ 29.8067, 18.7209,  
5.3628

■ 65.5975, 70.3484,  
78.8085

■ 28.4067, 16.5281,  
3.0243

■ 73.7358, 81.8287,  
96.3079

■ 27.5164, 15.0626,  
1.7558

■ 80.6740, 92.5889,  
108.2272

■ 27.2262, 14.5733,  
1.3780

# Harmonies

## Analogous

The Analogous color harmony consists of three colors that are next to each other on the color wheel.



43.0563, 36.2128, 38.6016



41.6582, 36.2128, 28.4611



38.3053, 36.2128, 22.4404

# Triad

The Triadic color harmony groups three colors that are evenly spaced from another and form a triangle on the color wheel.



41.6582, 36.2128, 28.4611



27.8181, 36.2128, 29.6392



34.7112, 36.2128, 67.0699

# Complementary

The Complementary color scheme is a pair of colors which are on the opposite of each other on the color wheel.



41.6582, 36.2128, 28.4611



43.1941, 52.2607, 69.4387

# Split Complementary

Split-complementary colors differ from the complementary color scheme. The scheme consists of three colors, the original color and two neighbors of the complement color.



30.8052, 36.2128, 63.3600



41.6582, 36.2128, 28.4611



27.0220, 36.2128, 40.2694

# Square

The Square scheme is like the rectangle color scheme, but the four colors are evenly spaced on the color wheel.



41.6582, 36.2128, 28.4611



30.3392, 36.2128, 23.0180



28.0715, 36.2128, 52.9062



38.8495, 36.2128, 62.2228



# Rectangle

The Rectangle color scheme consists of four colors that form a rectangle on the color wheel.



41.6582, 36.2128, 28.4611



35.5336, 36.2128, 20.7997



28.0715, 36.2128, 52.9062



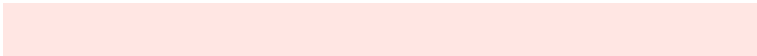
33.3283, 36.2128, 66.7806

# Sweetspot

The Sweet Spot groups the original color and five complimentary colors.



41.6591, 36.2145, 28.4618



83.4962, 83.5993, 84.3724



46.5140, 36.0222, 60.6065



17.5908, 17.4938, 17.4668



0.0000, 0.0000, 0.0000



20.3446, 21.4041, 23.3091



# Same Dimension

The Same Dimension uses a secret algorithm to generate beautiful new colors.



41.6591, 36.2145, 28.4618



59.3104, 48.8610, 34.2806



48.2375, 49.3712, 30.6546



11.9230, 12.0367, 12.3069



16.4711, 8.8752, 0.8450



0.9604, 0.5751, 0.0604



# Inverse Universe

The Inverse Universe completely reimagines the original color for something new.



43.1941, 52.2607, 69.4387



61.9872, 76.9917, 106.2016



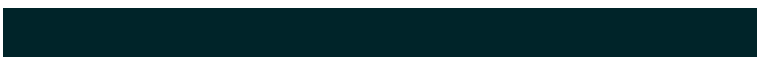
35.5961, 37.0646, 66.9061



12.0305, 13.1513, 15.1480



17.6577, 23.9620, 40.8870

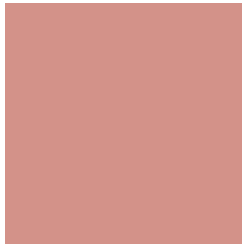


1.0227, 1.4105, 2.2979



# Previews

## White Background



This preview shows how the XYZ color 41.6582, 36.2128, 28.4611 looks on a white background.

## Color Contrast Check

Large Text (above 18pt) WCAG AA × Fail

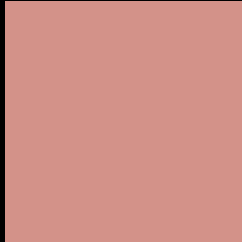
Any Text WCAG AA × Fail

Large Text (above 18pt) WCAG AAA × Fail

Any Text WCAG AAA × Fail



# Black Background



This preview shows how the XYZ color 41.6582, 36.2128, 28.4611 looks on a black background.

## Color Contrast Check

Large Text (above 18pt) WCAG AA ✓ Pass

Any Text WCAG AA ✓ Pass

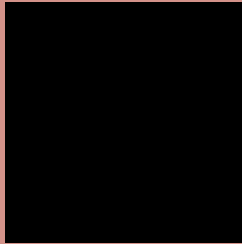
Large Text (above 18pt) WCAG AAA ✓ Pass

Any Text WCAG AAA ✓ Pass

If you want to check with other color combinations, try the [Color Contrast Checker](#).

**XYZ 41.6582, 36.2128, 28.4611**

## **Background**



This preview shows how black text looks on a background with the XYZ color 41.6582, 36.2128, 28.4611.



This preview shows how white text looks on a background with the XYZ color 41.6582, 36.2128,

28.4611.

# Color Blindness Simulation

Color vision deficiency is a very complex topic, and I could not describe the different causes any better than Wikipedia does, so if you want to learn more, you should check out their [article about color blindness](#).

## Dichromacy



### Original Color

41.6582, 36.2128, 28.4611

### Protanopia

34.6087, 36.4310, 31.9959

### Deuteranopia

37.0007, 36.2176, 27.9622



## Tritanopia

43.0958, 36.1241, 35.2731

# Trichromacy



## Original Color

41.6582, 36.2128, 28.4611

## Protanomaly

36.7785, 36.0442, 30.6100

## Deuteranomaly

38.4371, 35.9698, 28.2096

## Tritanomaly

42.4699, 36.0817, 32.7430

# Monochromacy



## Original Color

41.6582, 36.2128, 28.4611

## Achromatopsia

35.2861, 37.1238, 40.4278

## Achromatomaly

36.9458, 36.2708, 35.6256

# CSS Examples

## Text

The CSS property to change the color of the text to XYZ 41.6582, 36.2128, 28.4611 is called "color". The color property can be set on classes, ids or directly on the HTML element.

This example shows how text in the color `rgb(211, 146, 137)` looks like.

```
.text, #text, p{  
    color:rgb(211, 146, 137)  
}
```

If you want to add a text shadow in that color use the text-shadow property, you can generate a text shadow directly with our [CSS Text Shadow Generator](#).

Here you see how black text with a 4 pixel rgb(211, 146, 137) colored shadow looks like.

```
.shadow{ text-shadow: 4px 4px 2px rgb(211, 146, 137) }
```

## Border

The CSS property to change the border of an element to XYZ 41.6582, 36.2128, 28.4611 is called "border". The border property can be set on classes, ids or directly on the HTML element.

This example shows the color as border, it can be applied via the CSS property "border" or "border-color".

```
.border, #border, table{ border:4px solid rgb(211, 146, 137) }
```



If only the border color should be changed use the property `border-color`.

```
.border{ border-color:rgb(211, 146, 137) }
```

If you want to add a box shadow in that color use:

Here you see how a box with a 4 pixel `rgb(211, 146, 137)` colored shadow looks like.

```
.boxshadow{ -moz-box-shadow:4px 4px 4px  
4px rgb(211, 146, 137); -webkit-box-  
shadow:4px 4px 4px 4px rgb(211, 146, 137);  
box-shadow:4px 4px 4px 4px rgb(211, 146,  
137) }
```

# Background

The CSS property to change the background color of an element to XYZ 41.6582, 36.2128, 28.4611 is called "background". The background property can be set on classes, ids or directly on the HTML element.

```
.background, #background, body{  
background: rgb(211, 146, 137) }
```

If only the background color should be changed can be used:

```
.background{ background-color: rgb(211,  
146, 137) }
```

This example shows the color as background, it is applied via the CSS property "background".

To optimize and compress your CSS code, you can use our [online CSS compressor and optimizer](#) based on csstidy. If you want to create a linear or radial gradient as background or border, check our [CSS Gradient Generator](#).

Hey! You found this booklet interesting? Support Converting Colors with the new Membership Option!

The pro membership hides all ads, plus gives you double the colors in the color bucket, and more awesome pro features!

**[Learn more, Memberships starting at \\$2.50/m!](#)**

**Follow me  
on Twitter!**

@ConvertingColor