

Converting Colors

XYZ(41.6735, 57.8083, 89.0822)

Have a look what the booklet for
XYZ(41.6735, 57.8083, 89.0822)
contains.

XYZ(41.6068, 57.6759, 89.0604)	3
<i>Conversions</i>	4
<i>Details</i>	6
<i>Harmonies</i>	12
<i>Previews</i>	24
<i>Color Blindness Simulation</i>	28
<i>CSS Examples</i>	31

Color

**XYZ(41.6068, 57.6759,
89.0604)**

Conversions

Conversions Part 1

Format	Color
Hex	24DCED
RGB	36, 220, 237
RGB Percent	14%, 86%, 93%
CMY	0.8587, 0.1372, 0.0706
CMYK	0.85, 0.07, 0.00, 0.07
HSL	185°, 85%, 54%
HSV	185°, 85%, 93%
XYZ	41.6068, 57.6759, 89.0604
YIQ	166.9220, -115.1210, -33.7210

Conversions

Conversions Part 2

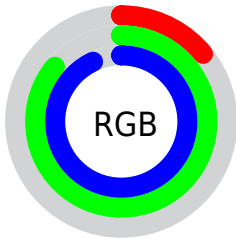
Format	Color
RYB	36, 132, 237
Decimal	2415853
CIELab	80.56, -36.55, -20.56
CIElCh	81, 41.940, 209.358
Yxy	57.6759, 0.2209, 0.3062
Android (android.graphics.Color)	4280605933 (0xFF24DCED)
YUV	166.9220, 34.5485, -114.8186
Hunter-Lab	75.9447, -35.1107, -16.3682

Details

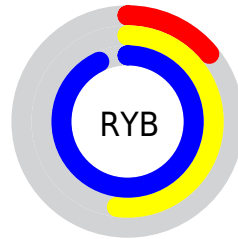
The XYZ color **41.6068, 57.6759, 89.0604** is a light color, and the websafe version is hex **33CCCC**. The color can be described as light washed cyan. A complement of this color would be **36.5183, 20.6804, 3.7378**, and the grayscale version is **36.5738, 38.4785, 41.9031**.

A 20% lighter version of the original color is **61.8360, 82.8776, 107.3456**, and **21.6159, 29.8871, 48.3456** is the 20% darker color. If you saturate the color by 10%, you get **40.5135, 56.3371, 88.8607**, and if you desaturate by 10%, it is **43.2563, 59.3131, 89.2906**.

Distribution



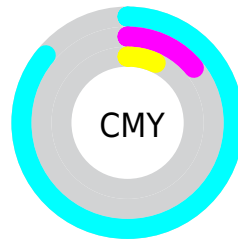
- Red (14%)
- Green (86%)
- Blue (93%)



- Red (14%)
- Yellow (52%)
- Blue (93%)



- Cyan (85%)
- Magenta (7%)
- Yellow (0%)
- Black (7%)



- Cyan (86%)
- Magenta (14%)
- Yellow (7%)

Brightness & Saturation Gradients

These gradients show how the XYZ color 41.6068, 57.6759, 89.0604 changes by changing the brightness by 10 percent. The first figure shows a shift by +10% for each color and the second figure -10%.

Similar to the brightness gradients but the following saturation gradients show a change of the XYZ color 41.6068, 57.6759, 89.0604 by changing the saturation by 10% instead.

41.6068, 57.6759,
89.0604

41.6068, 57.6759,
89.0604

343.8698,
415.9772, 545.4606

28.9833, 41.5481,
66.6323

76.8731, 101.4507,
147.9567

19.2124, 28.7476,
48.3261

100.2466,
129.8666, 185.2619

11.9288, 18.8900,
33.7234

127.9341,
163.1473, 228.3632

6.7670, 11.5908,
22.4056

160.3010,
201.6773, 277.6792

3.3619, 6.4657,
13.9540

197.7127,
245.8408, 333.6284

1.3479, 3.1303,
7.9503

240.5345,

0.2186, 1.2001,

296.0224, 396.6294

3.9759

289.1317,
352.6064, 467.1006

■ 0.0000, 0.0618,
1.6121

■ 0.0000, 0.0000,
0.2994

■ 41.6068, 57.6759,
89.0604

■ 41.6068, 57.6759,
89.0604

■ 40.5135, 56.3371,
88.8607

■ 43.2563, 59.3131,
89.2906

■ 40.0879, 55.7178,
88.7636

■ 45.5499, 61.2906,
89.5514

■ 48.5653, 63.6497,
89.8478

■ 52.3681, 66.4241,
90.1829

■ 57.0164, 69.6438,
90.5594

■ 62.5627, 73.3361,
90.9797

■ 69.0553, 77.5257,
91.4462

■ 76.5390, 82.2359,
91.9609

■ 85.0559, 87.4882,
92.5258

Harmonies

Analogous

The Analogous color harmony consists of three colors that are next to each other on the color wheel.



39.8617, 57.6759, 62.2692



41.6068, 57.6759, 89.0604



46.7993, 57.6759, 113.1239

Triad

The Triadic color harmony groups three colors that are evenly spaced from another and form a triangle on the color wheel.



41.6068, 57.6759, 89.0604



70.3493, 57.6759, 90.2276



55.0050, 57.6759, 26.2920

Complementary

The Complementary color scheme is a pair of colors which are on the opposite of each other on the color wheel.



41.6068, 57.6759, 89.0604



36.5183, 20.6804, 3.7378

Split Complementary

Split-complementary colors differ from the complementary color scheme. The scheme consists of three colors, the original color and two neighbors of the complement color.



63.7067, 57.6759, 30.1760



41.6068, 57.6759, 89.0604



73.1162, 57.6759, 63.3323

Square

The Square scheme is like the rectangle color scheme, but the four colors are evenly spaced on the color wheel.



41.6068, 57.6759, 89.0604



63.3520, 57.6759, 113.9127



70.5687, 57.6759, 42.2860



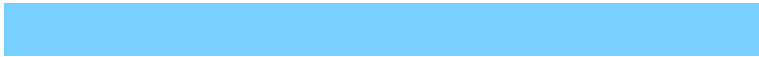
47.0892, 57.6759, 29.8511

Rectangle

The Rectangle color scheme consists of four colors that form a rectangle on the color wheel.



41.6068, 57.6759, 89.0604



51.8155, 57.6759, 121.9464



70.5687, 57.6759, 42.2860



57.9369, 57.6759, 26.7498

Sweetspot

The Sweet Spot groups the original color and five complimentary colors.



41.6086, 57.6780, 89.0618



73.6628, 86.4568, 107.4131



31.6503, 61.1996, 13.4851



15.2482, 18.1634, 22.9522



0.0000, 0.0000, 0.0000



20.3446, 21.4041, 23.3091

Same Dimension

The Same Dimension uses a secret algorithm to generate beautiful new colors.



41.6086, 57.6780, 89.0618



47.3116, 65.7432, 104.8039



22.7027, 19.8661, 82.7598



15.4024, 16.8912, 19.3708



21.9341, 30.5153, 48.4769



1.7545, 2.4605, 3.8173

Inverse Universe

The Inverse Universe completely reimagines the original color for something new.



48.4758, 24.4353, 69.8738



56.0099, 27.1680, 79.7072



46.6782, 41.0000, 7.1244



15.6567, 15.2905, 18.7432



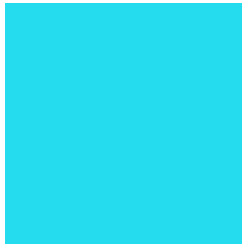
25.9266, 12.5733, 37.0106



2.0521, 0.9938, 2.9917

Previews

White Background



This preview shows how the XYZ color 41.6068, 57.6759, 89.0604 looks on a white background.

Color Contrast Check

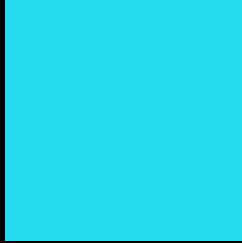
Large Text (above 18pt) WCAG AA × Fail

Any Text WCAG AA × Fail

Large Text (above 18pt) WCAG AAA × Fail

Any Text WCAG AAA × Fail

Black Background



This preview shows how the XYZ color 41.6068, 57.6759, 89.0604 looks on a black background.

Color Contrast Check

Large Text (above 18pt) WCAG AA ✓ Pass

Any Text WCAG AA ✓ Pass

Large Text (above 18pt) WCAG AAA ✓ Pass

Any Text WCAG AAA ✓ Pass

If you want to check with other color combinations, try the [Color Contrast Checker](#).

XYZ 41.6068, 57.6759, 89.0604

Background



This preview shows how black text looks on a background with the XYZ color 41.6068, 57.6759, 89.0604.



This preview shows how white text looks on a background with the XYZ color 41.6068, 57.6759,

Color Blindness Simulation

Color vision deficiency is a very complex topic, and I could not describe the different causes any better than Wikipedia does, so if you want to learn more, you should check out their [article about color blindness](#).

Dichromacy



Original Color

41.6068, 57.6759, 89.0604

Protanopia

55.6567, 56.8085, 77.1390

Deuteranopia

57.9751, 56.6567, 92.6742



Tritanopia

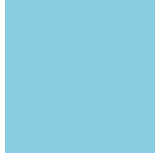
41.7888, 57.7528, 89.8338

Trichromacy



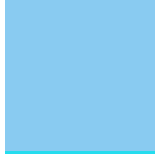
Original Color

41.6068, 57.6759, 89.0604



Protanomaly

46.0130, 54.5271, 80.7727



Deuteranomaly

47.5496, 54.3811, 91.2096



Tritanomaly

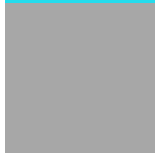
41.7888, 57.7528, 89.8338

Monochromacy



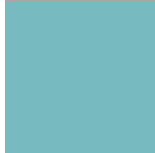
Original Color

41.6068, 57.6759, 89.0604



Achromatopsia

36.7301, 38.6429, 42.0822



Achromatomaly

34.6811, 42.8455, 56.3113

CSS Examples

Text

The CSS property to change the color of the text to XYZ 41.6068, 57.6759, 89.0604 is called "color". The color property can be set on classes, ids or directly on the HTML element.

This example shows how text in the color `rgb(36, 220, 237)` looks like.

```
.text, #text, p{  
    color:rgb(36, 220, 237)  
}
```

If you want to add a text shadow in that color use the text-shadow property, you can generate a text shadow directly with our [CSS Text Shadow Generator](#).

Here you see how black text with a 4 pixel rgb(36, 220, 237) colored shadow looks like.

```
.shadow{ text-shadow: 4px 4px 2px rgb(36, 220, 237) }
```

Border

The CSS property to change the border of an element to XYZ 41.6068, 57.6759, 89.0604 is called "border". The border property can be set on classes, ids or directly on the HTML element.

This example shows the color as border, it can be applied via the CSS property "border" or "border-color".

```
.border, #border, table{ border:4px solid rgb(36, 220, 237) }
```


If only the border color should be changed use the property `border-color`.

```
.border{ border-color:rgb(36, 220, 237) }
```

If you want to add a box shadow in that color use:

Here you see how a box with a 4 pixel `rgb(36, 220, 237)` colored shadow looks like.

```
.boxshadow{ -moz-box-shadow:4px 4px 4px  
4px rgb(36, 220, 237); -webkit-box-  
shadow:4px 4px 4px 4px rgb(36, 220, 237);  
box-shadow:4px 4px 4px 4px rgb(36, 220,  
237) }
```

Background

The CSS property to change the background color of an element to XYZ 41.6068, 57.6759, 89.0604 is called "background". The background property can be set on classes, ids or directly on the HTML element.

```
.background, #background, body{  
background: rgb(36, 220, 237) }
```

If only the background color should be changed can be used:

```
.background{ background-color: rgb(36, 220,  
237) }
```

This example shows the color as background, it is applied via the CSS property "background".

To optimize and compress your CSS code, you can use our [online CSS compressor and optimizer](#) based on csstidy. If you want to create a linear or radial gradient as background or border, check our [CSS Gradient Generator](#).

Hey! You found this booklet interesting? Support Converting Colors with the new Membership Option!

The pro membership hides all ads, plus gives you double the colors in the color bucket, and more awesome pro features!

[Learn more, Memberships starting at \\$2.50/m!](#)

**Follow me
on Twitter!**

@ConvertingColor