

Converting Colors

XYZ(41.7208, 41.1942, 43.2828)

Have a look what the booklet for
XYZ(41.7208, 41.1942, 43.2828)
contains.

XYZ(41.7192, 41.1934, 43.2884)	3
<i>Conversions</i>	4
<i>Details</i>	6
<i>Harmonies</i>	12
<i>Previews</i>	24
<i>Color Blindness Simulation</i>	28
<i>CSS Examples</i>	31

Color

**XYZ(41.7192, 41.1934,
43.2884)**

Conversions

Conversions Part 1

Format	Color
Hex	BCA7A9
RGB	188, 167, 169
RGB Percent	74%, 65%, 66%
CMY	0.2627, 0.3451, 0.3373
CMYK	0.00, 0.11, 0.10, 0.26
HSL	354°, 14%, 70%
HSV	354°, 11%, 74%
XYZ	41.7192, 41.1934, 43.2884
YIQ	173.5070, 11.8740, 5.0740

Conversions

Conversions Part 2

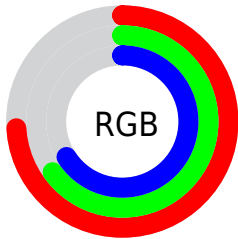
Format	Color
R_{YB}	188, 167, 169
Decimal	12363689
CIE Lab	70.31, 7.96, 1.75
CIE LCh	70, 8.147, 12.408
Yxy	41.1934, 0.3306, 0.3264
Android (android.graphics.Color)	4290553769 (0xFFBCA7A9)
YUV	173.5070, -2.2220, 12.7104
Hunter-Lab	64.1821, 3.7087, 4.9386

Details

The XYZ color **41.7192, 41.1934, 43.2884** is a light color, and the websafe version is hex **999999**. A complement of this color would be **42.7841, 47.7281, 53.4142**, and the grayscale version is **39.9871, 42.0696, 45.8138**.

A 20% lighter version of the original color is **76.8840, 76.8575, 81.3038**, and **19.3333, 18.6967, 19.4195** is the 20% darker color. If you saturate the color by 10%, you get **37.0278, 34.2021, 34.3511**, and if you desaturate by 10%, it is **47.1214, 49.2728, 53.4890**.

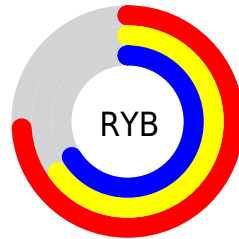
Distribution



Red (74%)

Green (65%)

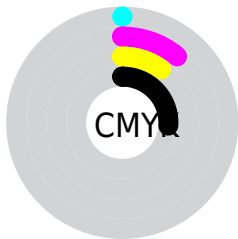
Blue (66%)



Red (74%)

Yellow (65%)

Blue (66%)

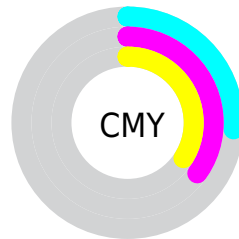


Cyan (0%)

Magenta (11%)

Yellow (10%)

Black (26%)



Cyan (26%)

Magenta (35%)

Yellow (34%)

Brightness & Saturation Gradients

These gradients show how the XYZ color 41.7192, 41.1934, 43.2884 changes by changing the brightness by 10 percent. The first figure shows a shift by +10% for each color and the second figure -10%.

Similar to the brightness gradients but the following saturation gradients show a change of the XYZ color 41.7192, 41.1934, 43.2884 by changing the saturation by 10% instead.

■ 41.7192, 41.1934,
43.2884

■ 41.7192, 41.1934,
43.2884

344.3291,
351.1283, 375.7525

■ 29.0716, 28.4702,
29.7784

■ 77.0423, 76.9774,
81.4369

■ 19.2796, 18.6804,
19.4198

■ 100.4485,
100.8070, 106.9125

■ 11.9777, 11.4396,
11.7941

128.1717,
129.1076, 137.2137

■ 6.8006, 6.3633,
6.4828

160.5772,
162.2635, 172.7590

■ 3.3829, 3.0672,
3.0673

198.0303,
200.6591, 213.9670

■ 1.3593, 1.1669,
1.1291

240.8964,

■ 0.2270, 0.0345,

244.6788, 261.2562

0.0000

289.5409,
294.7071, 315.0452

■ 0.0000, 0.0000,
0.0000

■ 41.7192, 41.1934,
43.2884

■ 41.7192, 41.1934,
43.2884

■ 37.0278, 34.2021,
34.3511

■ 47.1214, 49.2728,
53.4890

■ 33.0144, 28.2474,
26.6252

■ 53.2587, 58.4783,
64.9965

■ 29.6485, 23.2814,
20.0595

■ 60.1586, 68.8528,
77.8559

■ 26.8961, 19.2505,
14.5977

■ 67.8459, 80.4352,
92.1092

■ 24.7199, 16.0963,
10.1791

■ 74.3987, 89.3713,
107.1480

■ 23.0789, 13.7532,
6.7370

■ 74.5492, 89.4315,
107.9406

■ 21.9261, 12.1470,
4.1969

■ 21.2068, 11.1895,
2.4737

■ 20.8474, 10.7347,
1.5403

Harmonies

Analogous

The Analogous color harmony consists of three colors that are next to each other on the color wheel.



41.6564, 41.1934, 47.1160



41.7192, 41.1934, 43.2884



41.0831, 41.1934, 40.0660

Triad

The Triadic color harmony groups three colors that are evenly spaced from another and form a triangle on the color wheel.



41.7192, 41.1934, 43.2884



37.4440, 41.1934, 39.6305



38.3808, 41.1934, 52.2471

Complementary

The Complementary color scheme is a pair of colors which are on the opposite of each other on the color wheel.



41.7192, 41.1934, 43.2884



42.7841, 47.7281, 53.4142

Split Complementary

Split-complementary colors differ from the complementary color scheme. The scheme consists of three colors, the original color and two neighbors of the complement color.



37.2845, 41.1934, 50.0061



41.7192, 41.1934, 43.2884



36.7521, 41.1934, 42.6629

Square

The Square scheme is like the rectangle color scheme, but the four colors are evenly spaced on the color wheel.



41.7192, 41.1934, 43.2884



38.6030, 41.1934, 38.0362



36.6944, 41.1934, 46.4541



39.7083, 41.1934, 52.4383

Rectangle

The Rectangle color scheme consists of four colors that form a rectangle on the color wheel.



41.7192, 41.1934, 43.2884



40.3565, 41.1934, 38.6358



36.6944, 41.1934, 46.4541



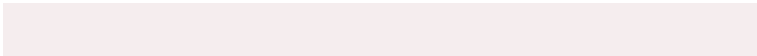
37.9738, 41.1934, 51.7029

Sweetspot

The Sweet Spot groups the original color and five complimentary colors.



41.7204, 41.1952, 43.2893



83.4581, 86.3914, 93.2844



43.1225, 41.6967, 53.3529



17.7712, 18.3145, 19.7285



90.7827, 95.5105, 104.0109



18.6292, 19.5994, 21.3438

Same Dimension

The Same Dimension uses a secret algorithm to generate beautiful new colors.



41.7204, 41.1952, 43.2893



73.7696, 71.9109, 74.9594



43.1233, 44.2988, 42.8391



9.5660, 9.5507, 10.1038



14.2067, 7.3138, 1.1161



0.5690, 0.2915, 0.1098

Inverse Universe

The Inverse Universe completely reimagines the original color for something new.



41.7204, 41.1952, 43.2893



73.7696, 71.9109, 74.9594



41.2556, 44.3291, 53.9594



9.5660, 9.5507, 10.1038



14.2067, 7.3138, 1.1161



0.5690, 0.2915, 0.1098

Previews

White Background



This preview shows how the XYZ color 41.7192, 41.1934, 43.2884 looks on a white background.

Color Contrast Check

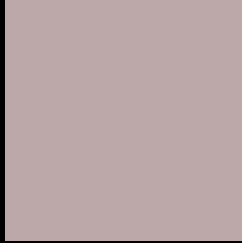
Large Text (above 18pt) WCAG AA × Fail

Any Text WCAG AA × Fail

Large Text (above 18pt) WCAG AAA × Fail

Any Text WCAG AAA × Fail

Black Background



This preview shows how the XYZ color 41.7192, 41.1934, 43.2884 looks on a black background.

Color Contrast Check

Large Text (above 18pt) WCAG AA ✓ Pass

Any Text WCAG AA ✓ Pass

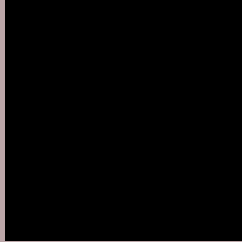
Large Text (above 18pt) WCAG AAA ✓ Pass

Any Text WCAG AAA ✓ Pass

If you want to check with other color combinations, try the [Color Contrast Checker](#).

XYZ 41.7192, 41.1934, 43.2884

Background



This preview shows how black text looks on a background with the XYZ color 41.7192, 41.1934, 43.2884.



This preview shows how white text looks on a background with the XYZ color 41.7192, 41.1934,

43.2884.

Color Blindness Simulation

Color vision deficiency is a very complex topic, and I could not describe the different causes any better than Wikipedia does, so if you want to learn more, you should check out their [article about color blindness](#).

Dichromacy



Original Color

41.7192, 41.1934, 43.2884

Protanopia

39.5928, 41.1801, 44.3899

Deuteranopia

42.0329, 41.0842, 43.2508



Tritanopia

42.6584, 41.3056, 47.8439

Trichromacy



Original Color

41.7192, 41.1934, 43.2884

Protanomaly

40.4528, 41.3550, 43.8804

Deuteranomaly

41.7839, 40.9558, 43.2391

Tritanomaly

42.3603, 41.1864, 46.2746

Monochromacy



Original Color

41.7192, 41.1934, 43.2884

Achromatopsia

40.2316, 42.3268, 46.0938

Achromatomaly

40.5997, 41.6881, 44.9365

CSS Examples

Text

The CSS property to change the color of the text to XYZ 41.7192, 41.1934, 43.2884 is called "color". The color property can be set on classes, ids or directly on the HTML element.

This example shows how text in the color `rgb(188, 167, 169)` looks like.

```
.text, #text, p{  
    color:rgb(188, 167, 169)  
}
```

If you want to add a text shadow in that color use the text-shadow property, you can generate a text shadow directly with our [CSS Text Shadow Generator](#).

Here you see how black text with a 4 pixel rgb(188, 167, 169) colored shadow looks like.

```
.shadow{ text-shadow: 4px 4px 2px rgb(188, 167, 169) }
```

Border

The CSS property to change the border of an element to XYZ 41.7192, 41.1934, 43.2884 is called "border". The border property can be set on classes, ids or directly on the HTML element.

This example shows the color as border, it can be applied via the CSS property "border" or "border-color".

```
.border, #border, table{ border:4px solid rgb(188, 167, 169) }
```


If only the border color should be changed use the property `border-color`.

```
.border{ border-color:rgb(188, 167, 169) }
```

If you want to add a box shadow in that color use:

Here you see how a box with a 4 pixel `rgb(188, 167, 169)` colored shadow looks like.

```
.boxshadow{ -moz-box-shadow:4px 4px 4px  
4px rgb(188, 167, 169); -webkit-box-  
shadow:4px 4px 4px 4px rgb(188, 167, 169);  
box-shadow:4px 4px 4px 4px rgb(188, 167,  
169) }
```

Background

The CSS property to change the background color of an element to XYZ 41.7192, 41.1934, 43.2884 is called "background". The background property can be set on classes, ids or directly on the HTML element.

```
.background, #background, body{  
background: rgb(188, 167, 169) }
```

If only the background color should be changed can be used:

```
.background{ background-color: rgb(188,  
167, 169) }
```

This example shows the color as background, it is applied via the CSS property "background".

To optimize and compress your CSS code, you can use our [online CSS compressor and optimizer](#) based on csstidy. If you want to create a linear or radial gradient as background or border, check our [CSS Gradient Generator](#).

Hey! You found this booklet interesting? Support Converting Colors with the new Membership Option!

The pro membership hides all ads, plus gives you double the colors in the color bucket, and more awesome pro features!

[Learn more, Memberships starting at \\$2.50/m!](#)

**Follow me
on Twitter!**

@ConvertingColor