

Converting Colors

XYZ(41.8053, 27.0793, 21.4587)

Have a look what the booklet for
XYZ(41.8053, 27.0793, 21.4587)
contains.

XYZ(41.7765, 27.0727, 21.4360)	3
<i>Conversions</i>	4
<i>Details</i>	6
<i>Harmonies</i>	12
<i>Previews</i>	24
<i>Color Blindness Simulation</i>	28
<i>CSS Examples</i>	31

Color

**XYZ(41.7765, 27.0727,
21.4360)**

Conversions

Conversions Part 1

Format	Color
Hex	EB5E7A
RGB	235, 94, 122
RGB Percent	92%, 37%, 48%
CMY	0.0784, 0.6313, 0.5216
CMYK	0.00, 0.60, 0.48, 0.08
HSL	348°, 78%, 65%
HSV	348°, 60%, 92%
XYZ	41.7765, 27.0727, 21.4360
YIQ	139.3510, 75.0480, 38.6000

Conversions

Conversions Part 2

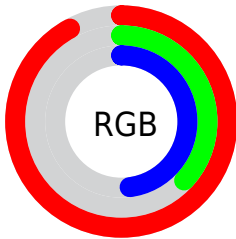
Format	Color
R_{YB}	235, 94, 122
Decimal	15425146
CIE Lab	59.04, 56.71, 13.03
CIE LCh	59, 58.185, 12.945
Yxy	27.0727, 0.4627, 0.2999
Android (android.graphics.Color)	4293615226 (0xFFEB5E7A)
YUV	139.3510, -8.5540, 83.8842
Hunter-Lab	52.0314, 52.2642, 11.9956

Details

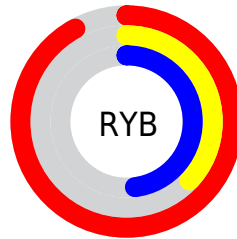
The XYZ color **41.7765, 27.0727, 21.4360** is a dark color, and the websafe version is hex **FF6699**. The color can be described as middle muted rose. A complement of this color would be **45.5886, 66.3020, 69.4311**, and the grayscale version is **24.6887, 25.9744, 28.2861**.

A 20% lighter version of the original color is **59.7863, 46.1287, 45.7970**, and **19.2636, 10.6371, 7.5164** is the 20% darker color. If you saturate the color by 10%, you get **38.9395, 23.0889, 15.2800**, and if you desaturate by 10%, it is **45.4770, 32.4217, 28.9960**.

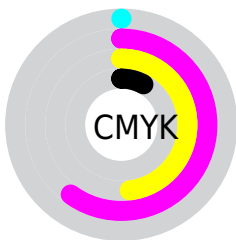
Distribution



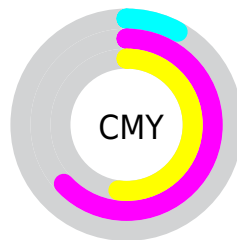
- Red (92%)
- Green (37%)
- Blue (48%)



- Red (92%)
- Yellow (37%)
- Blue (48%)



- Cyan (0%)
- Magenta (60%)
- Yellow (48%)
- Black (8%)



- Cyan (8%)
- Magenta (63%)
- Yellow (52%)

Brightness & Saturation Gradients

These gradients show how the XYZ color 41.7765, 27.0727, 21.4360 changes by changing the brightness by 10 percent. The first figure shows a shift by +10% for each color and the second figure -10%.

Similar to the brightness gradients but the following saturation gradients show a change of the XYZ color 41.7765, 27.0727, 21.4360 by changing the saturation by 10% instead.

41.7765, 27.0727,
21.4360

41.7765, 27.0727,
21.4360

344.5630,
288.0089, 272.4434

29.1167, 17.6278,
13.2487

77.1285, 55.0005,
46.7022

19.3138, 10.6831,
7.4673

100.5515, 74.2522,
64.6182

12.0026, 5.8542,
3.6732

128.2928, 97.5417,
86.6143

6.8177, 2.7566,
1.4478

160.7179,
125.2533, 113.1088

3.3936, 1.0060,
0.1786

198.1921,
157.7714, 144.5205

1.3652, 0.0000,
0.0000

241.0808,

0.2312, 0.0000,

195.4805, 181.2678

0.0000

289.7493,
238.7649, 223.7692

■ 0.0000, 0.0000,
0.0000

■ 41.7765, 27.0727,
21.4360

■ 41.7765, 27.0727,
21.4360

■ 38.9395, 23.0889,
15.2800

■ 45.4770, 32.4217,
28.9960

■ 36.8910, 20.3411,
10.4377

■ 50.1032, 39.2408,
38.0397

■ 35.5461, 18.6828,
6.8096

■ 55.7140, 47.6299,
48.6421

■ 34.7673, 17.8648,
4.2697

■ 62.3627, 57.6788,
60.8728

■ 34.7671, 17.8646,
4.2689

■ 70.0985, 69.4704,
74.7970

■ 78.9679, 83.0820,
90.4766

■ 87.8848, 96.3277,
107.5934

■ 88.0709, 96.4021,
108.5734

Harmonies

Analogous

The Analogous color harmony consists of three colors that are next to each other on the color wheel.



41.4214, 27.0727, 42.7477



41.7765, 27.0727, 21.4360



37.2940, 27.0727, 9.8365

Triad

The Triadic color harmony groups three colors that are evenly spaced from another and form a triangle on the color wheel.



41.7765, 27.0727, 21.4360



17.3832, 27.0727, 8.8977



21.8701, 27.0727, 86.1873

Complementary

The Complementary color scheme is a pair of colors which are on the opposite of each other on the color wheel.



41.7765, 27.0727, 21.4360



45.5886, 66.3020, 69.4311

Split Complementary

Split-complementary colors differ from the complementary color scheme. The scheme consists of three colors, the original color and two neighbors of the complement color.



16.8466, 27.0727, 65.7217



41.7765, 27.0727, 21.4360



14.6083, 27.0727, 19.2844

Square

The Square scheme is like the rectangle color scheme, but the four colors are evenly spaced on the color wheel.



41.7765, 27.0727, 21.4360



22.7447, 27.0727, 5.2244



14.4323, 27.0727, 39.3142



28.9696, 27.0727, 87.7056

Rectangle

The Rectangle color scheme consists of four colors that form a rectangle on the color wheel.



41.7765, 27.0727, 21.4360



32.5788, 27.0727, 6.3512



14.4323, 27.0727, 39.3142



19.9183, 27.0727, 80.9736

Sweetspot

The Sweet Spot groups the original color and five complimentary colors.



41.7772, 27.0742, 21.4365



76.7478, 71.9831, 76.3249



44.6755, 27.2418, 81.5006



15.8824, 14.5800, 15.3469



0.0000, 0.0000, 0.0000



20.3446, 21.4041, 23.3091

Same Dimension

The Same Dimension uses a secret algorithm to generate beautiful new colors.



41.7772, 27.0742, 21.4365



46.2176, 26.8971, 16.9017



45.1289, 36.1650, 15.1936



15.1877, 15.1029, 16.2738



19.3854, 9.9568, 2.5648



1.5556, 0.7952, 0.3770

Inverse Universe

The Inverse Universe completely reimagines the original color for something new.



41.7772, 27.0742, 21.4365



46.2176, 26.8971, 16.9017



38.6165, 46.3867, 85.5153



15.1877, 15.1029, 16.2738



19.3854, 9.9568, 2.5648



1.5556, 0.7952, 0.3770

Previews

White Background



This preview shows how the XYZ color 41.7765, 27.0727, 21.4360 looks on a white background.

Color Contrast Check

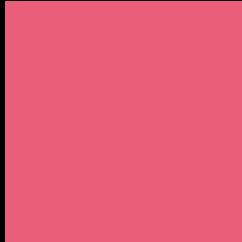
Large Text (above 18pt) WCAG AA ✓ Pass

Any Text WCAG AA × Fail

Large Text (above 18pt) WCAG AAA × Fail

Any Text WCAG AAA × Fail

Black Background



This preview shows how the XYZ color 41.7765, 27.0727, 21.4360 looks on a black background.

Color Contrast Check

Large Text (above 18pt) WCAG AA ✓ Pass

Any Text WCAG AA ✓ Pass

Large Text (above 18pt) WCAG AAA ✓ Pass

Any Text WCAG AAA × Fail

If you want to check with other color combinations, try the [Color Contrast Checker](#).

XYZ 41.7765, 27.0727, 21.4360

Background



This preview shows how black text looks on a background with the XYZ color 41.7765, 27.0727, 21.4360.



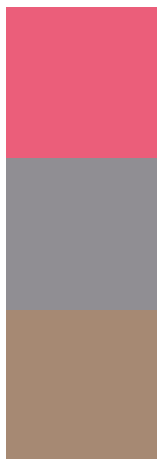
This preview shows how white text looks on a background with the XYZ color 41.7765, 27.0727,

21.4360.

Color Blindness Simulation

Color vision deficiency is a very complex topic, and I could not describe the different causes any better than Wikipedia does, so if you want to learn more, you should check out their [article about color blindness](#).

Dichromacy



Original Color

41.7765, 27.0727, 21.4360

Protanopia

26.4411, 27.3819, 31.4954

Deuteranopia

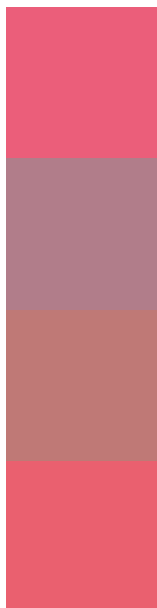
27.7661, 27.2361, 20.0133



Tritanopia

40.7051, 27.0413, 16.1708

Trichromacy



Original Color

41.7765, 27.0727, 21.4360

Protanomaly

30.0525, 25.8493, 27.4502

Deuteranomaly

31.5932, 26.0591, 20.5043

Tritanomaly

40.9838, 27.0059, 18.0915

Monochromacy



Original Color

41.7765, 27.0727, 21.4360

Achromatopsia

24.5403, 25.8183, 28.1161

Achromatomaly

28.7722, 24.8580, 25.4719

CSS Examples

Text

The CSS property to change the color of the text to XYZ 41.7765, 27.0727, 21.4360 is called "color". The color property can be set on classes, ids or directly on the HTML element.

This example shows how text in the color `rgb(235, 94, 122)` looks like.

```
.text, #text, p{  
    color:rgb(235, 94, 122)  
}
```

If you want to add a text shadow in that color use the text-shadow property, you can generate a text shadow directly with our [CSS Text Shadow Generator](#).

Here you see how black text with a 4 pixel rgb(235, 94, 122) colored shadow looks like.

```
.shadow{ text-shadow: 4px 4px 2px rgb(235, 94, 122) }
```

Border

The CSS property to change the border of an element to XYZ 41.7765, 27.0727, 21.4360 is called "border". The border property can be set on classes, ids or directly on the HTML element.

This example shows the color as border, it can be applied via the CSS property "border" or "border-color".

```
.border, #border, table{ border:4px solid rgb(235, 94, 122) }
```


If only the border color should be changed use the property `border-color`.

```
.border{ border-color:rgb(235, 94, 122) }
```

If you want to add a box shadow in that color use:

Here you see how a box with a 4 pixel `rgb(235, 94, 122)` colored shadow looks like.

```
.boxshadow{ -moz-box-shadow:4px 4px 4px  
4px rgb(235, 94, 122); -webkit-box-  
shadow:4px 4px 4px 4px rgb(235, 94, 122);  
box-shadow:4px 4px 4px 4px rgb(235, 94,  
122) }
```

Background

The CSS property to change the background color of an element to XYZ 41.7765, 27.0727, 21.4360 is called "background". The background property can be set on classes, ids or directly on the HTML element.

```
.background, #background, body{  
background: rgb(235, 94, 122) }
```

If only the background color should be changed can be used:

```
.background{ background-color: rgb(235, 94,  
122) }
```

This example shows the color as background, it is applied via the CSS property "background".

To optimize and compress your CSS code, you can use our [online CSS compressor and optimizer](#) based on csstidy. If you want to create a linear or radial gradient as background or border, check our [CSS Gradient Generator](#).

Hey! You found this booklet interesting? Support Converting Colors with the new Membership Option!

The pro membership hides all ads, plus gives you double the colors in the color bucket, and more awesome pro features!

[Learn more, Memberships starting at \\$2.50/m!](#)

**Follow me
on Twitter!**

@ConvertingColor