

Converting Colors

XYZ(41.8416, 40.3632, 34.0055)

Have a look what the booklet for
XYZ(41.8416, 40.3632, 34.0055)
contains.

XYZ(41.8107, 40.3701, 34.0223)	3
<i>Conversions</i>	4
<i>Details</i>	6
<i>Harmonies</i>	12
<i>Previews</i>	24
<i>Color Blindness Simulation</i>	28
<i>CSS Examples</i>	31

Color

**XYZ(41.8107, 40.3701,
34.0223)**

Conversions

Conversions Part 1

Format	Color
Hex	C6A395
RGB	198, 163, 149
RGB Percent	78%, 64%, 58%
CMY	0.2235, 0.3608, 0.4157
CMYK	0.00, 0.18, 0.25, 0.22
HSL	17°, 30%, 68%
HSV	17°, 25%, 78%
XYZ	41.8107, 40.3701, 34.0223
YIQ	171.8690, 25.3540, 3.0660

Conversions

Conversions Part 2

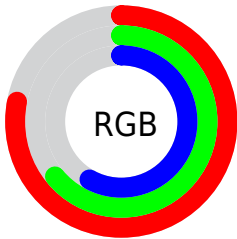
Format	Color
R _Y B	198, 169, 149
Decimal	13018005
CIE Lab	69.73, 10.73, 12.10
CIE LCh	70, 16.170, 48.433
Yxy	40.3701, 0.3598, 0.3474
Android (android.graphics.Color)	4291208085 (0xFFC6A395)
YUV	171.8690, -11.2744, 22.9169
Hunter-Lab	63.5375, 6.2710, 12.7283

Details

The XYZ color **41.8107, 40.3701, 34.0223** is a light color, and the websafe version is hex **CC9999**. A complement of this color would be **39.7275, 44.7464, 59.9693**, and the grayscale version is **39.1936, 41.2347, 44.9046**.

A 20% lighter version of the original color is **77.0909, 75.7146, 67.0512**, and **19.2167, 18.0904, 14.0342** is the 20% darker color. If you saturate the color by 10%, you get **37.9905, 35.0480, 25.6017**, and if you desaturate by 10%, it is **46.1826, 46.3650, 43.9536**.

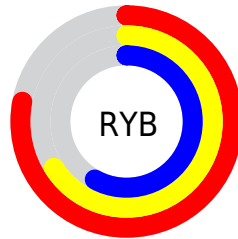
Distribution



Red (78%)

Green (64%)

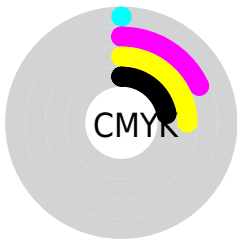
Blue (58%)



Red (78%)

Yellow (66%)

Blue (58%)

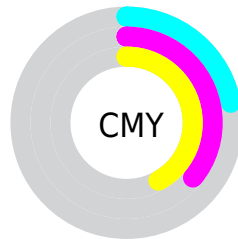


Cyan (0%)

Magenta (18%)

Yellow (25%)

Black (22%)



Cyan (22%)

Magenta (36%)

Yellow (42%)

Brightness & Saturation Gradients


These gradients show how the XYZ color 41.8107, 40.3701, 34.0223 changes by changing the brightness by 10 percent. The first figure shows a shift by +10% for each color and the second figure -10%.

Similar to the brightness gradients but the following saturation gradients show a change of the XYZ color 41.8107, 40.3701, 34.0223 by changing the saturation by 10% instead.


 41.8107, 40.3701,
34.0223


 41.8107, 40.3701,
34.0223


344.7026,
347.6810, 335.0037

 29.1436, 27.8272,
22.6332


 77.1800, 75.7268,
67.1026

 19.3343, 18.1955,
14.1202


 100.6129, 99.3093,
89.6310

 12.0175, 11.0904,
8.0646

128.3650,
127.3406, 116.7095

 6.8279, 6.1277,
4.0479

160.8019,
160.2049, 148.7568

 3.4001, 2.9229,
1.6517

198.2887,
198.2868, 186.1912

 1.3687, 1.0916,
0.3273

241.1908,

 0.2338, 0.0000,

241.9704, 229.4315

0.0000

289.8737,
291.6404, 278.8962

■ 0.0000, 0.0000,
0.0000

■ 41.8107, 40.3701,
34.0223

■ 41.8107, 40.3701,
34.0223

■ 37.9905, 35.0480,
25.6017

■ 46.1826, 46.3650,
43.9536

■ 34.6961, 30.3692,
18.6147

■ 51.1244, 53.0498,
55.4626

■ 31.9039, 26.3104,
12.9810

■ 56.6574, 60.4477,
68.6151

■ 29.5875, 22.8445,
8.6115

■ 62.8008, 68.5794,
83.4726

■ 27.7176, 19.9423,
5.4061

■ 69.5729, 77.4645,
100.0933

■ 26.2613, 17.5718,
3.2494

■ 74.8608, 86.2699,
107.3139

■ 25.1801, 15.6973,
2.0015

■ 77.0988, 90.7458,
108.0599

■ 24.7316, 14.8915,
1.5708

Harmonies

Analogous

The Analogous color harmony consists of three colors that are next to each other on the color wheel.



43.3504, 40.3701, 39.5508



41.8107, 40.3701, 34.0223



39.3895, 40.3701, 31.2838

Triad

The Triadic color harmony groups three colors that are evenly spaced from another and form a triangle on the color wheel.



41.8107, 40.3701, 34.0223



33.6443, 40.3701, 41.1264



39.9854, 40.3701, 59.1116

Complementary

The Complementary color scheme is a pair of colors which are on the opposite of each other on the color wheel.



41.8107, 40.3701, 34.0223



39.7275, 44.7464, 59.9693

Split Complementary

Split-complementary colors differ from the complementary color scheme. The scheme consists of three colors, the original color and two neighbors of the complement color.



37.3693, 40.3701, 59.6580



41.8107, 40.3701, 34.0223



33.7875, 40.3701, 48.6771

Square

The Square scheme is like the rectangle color scheme, but the four colors are evenly spaced on the color wheel.



41.8107, 40.3701, 34.0223



34.7239, 40.3701, 35.0624



35.1245, 40.3701, 55.6569



42.2640, 40.3701, 54.2394

Rectangle

The Rectangle color scheme consists of four colors that form a rectangle on the color wheel.



41.8107, 40.3701, 34.0223



37.6366, 40.3701, 31.1746



35.1245, 40.3701, 55.6569



39.1140, 40.3701, 59.8262

Sweetspot

The Sweet Spot groups the original color and five complimentary colors.



41.8118, 40.3720, 34.0231



88.3750, 91.0373, 93.1498



42.7004, 36.9667, 50.2966



18.7980, 19.3267, 19.6619



0.0000, 0.0000, 0.0000



20.3446, 21.4041, 23.3091

Same Dimension

The Same Dimension uses a secret algorithm to generate beautiful new colors.



41.8118, 40.3720, 34.0231



70.0648, 65.9716, 51.4242



46.5655, 49.8795, 35.6077



10.8767, 11.1224, 11.1363



16.1475, 9.8122, 1.0429



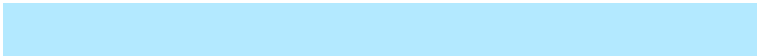
0.8279, 0.5912, 0.0705

Inverse Universe

The Inverse Universe completely reimagines the original color for something new.



39.7275, 44.7464, 59.9693



65.7026, 75.0994, 105.6405



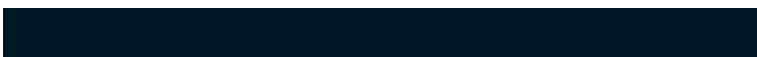
35.0924, 35.4762, 58.4243



10.6807, 11.5355, 13.5811



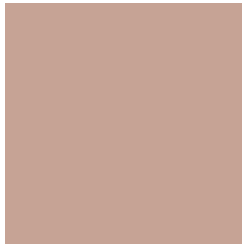
12.9387, 15.2713, 37.0101



0.6722, 0.8423, 1.7723

Previews

White Background



This preview shows how the XYZ color 41.8107, 40.3701, 34.0223 looks on a white background.

Color Contrast Check

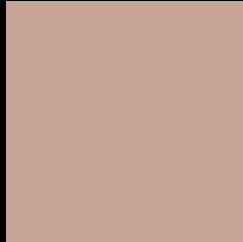
Large Text (above 18pt) WCAG AA × Fail

Any Text WCAG AA × Fail

Large Text (above 18pt) WCAG AAA × Fail

Any Text WCAG AAA × Fail

Black Background



This preview shows how the XYZ color 41.8107, 40.3701, 34.0223 looks on a black background.

Color Contrast Check

Large Text (above 18pt) WCAG AA ✓ Pass

Any Text WCAG AA ✓ Pass

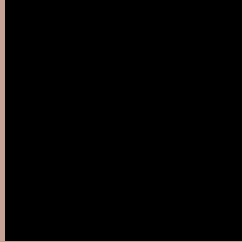
Large Text (above 18pt) WCAG AAA ✓ Pass

Any Text WCAG AAA ✓ Pass

If you want to check with other color combinations, try the [Color Contrast Checker](#).

XYZ 41.8107, 40.3701, 34.0223

Background



This preview shows how black text looks on a background with the XYZ color 41.8107, 40.3701, 34.0223.



This preview shows how white text looks on a background with the XYZ color 41.8107, 40.3701,

Color Blindness Simulation

Color vision deficiency is a very complex topic, and I could not describe the different causes any better than Wikipedia does, so if you want to learn more, you should check out their [article about color blindness](#).

Dichromacy



Original Color

41.8107, 40.3701, 34.0223

Protanopia

38.4846, 40.5143, 35.9287

Deuteranopia

41.2060, 40.3229, 34.0451



Tritanopia

44.1046, 40.5377, 44.5297

Trichromacy



Original Color

41.8107, 40.3701, 34.0223

Protanomaly

39.4938, 40.2187, 35.3872

Deuteranomaly

41.4652, 40.4566, 34.0572

Tritanomaly

43.2651, 40.4494, 40.6492

Monochromacy



Original Color

41.8107, 40.3701, 34.0223

Achromatopsia

39.2122, 41.2543, 44.9259

Achromatomaly

39.9449, 40.8800, 40.9073

CSS Examples

Text

The CSS property to change the color of the text to XYZ 41.8107, 40.3701, 34.0223 is called "color". The color property can be set on classes, ids or directly on the HTML element.

This example shows how text in the color `rgb(198, 163, 149)` looks like.

```
.text, #text, p{  
    color:rgb(198, 163, 149)  
}
```

If you want to add a text shadow in that color use the text-shadow property, you can generate a text shadow directly with our [CSS Text Shadow Generator](#).

Here you see how black text with a 4 pixel rgb(198, 163, 149) colored shadow looks like.

```
.shadow{ text-shadow: 4px 4px 2px rgb(198, 163, 149) }
```

Border

The CSS property to change the border of an element to XYZ 41.8107, 40.3701, 34.0223 is called "border". The border property can be set on classes, ids or directly on the HTML element.

This example shows the color as border, it can be applied via the CSS property "border" or "border-color".

```
.border, #border, table{ border:4px solid rgb(198, 163, 149) }
```


If only the border color should be changed use the property `border-color`.

```
.border{ border-color:rgb(198, 163, 149) }
```

If you want to add a box shadow in that color use:

Here you see how a box with a 4 pixel `rgb(198, 163, 149)` colored shadow looks like.

```
.boxshadow{ -moz-box-shadow:4px 4px 4px  
4px rgb(198, 163, 149); -webkit-box-  
shadow:4px 4px 4px 4px rgb(198, 163, 149);  
box-shadow:4px 4px 4px 4px rgb(198, 163,  
149) }
```

Background

The CSS property to change the background color of an element to XYZ 41.8107, 40.3701, 34.0223 is called "background". The background property can be set on classes, ids or directly on the HTML element.

```
.background, #background, body{  
background: rgb(198, 163, 149) }
```

If only the background color should be changed can be used:

```
.background{ background-color: rgb(198,  
163, 149) }
```

This example shows the color as background, it is applied via the CSS property "background".

To optimize and compress your CSS code, you can use our [online CSS compressor and optimizer](#) based on csstidy. If you want to create a linear or radial gradient as background or border, check our [CSS Gradient Generator](#).

Hey! You found this booklet interesting? Support Converting Colors with the new Membership Option!

The pro membership hides all ads, plus gives you double the colors in the color bucket, and more awesome pro features!

[Learn more, Memberships starting at \\$2.50/m!](#)

**Follow me
on Twitter!**

@ConvertingColor