

Converting Colors

XYZ(41.9123, 39.5548, 33.9858)

Have a look what the booklet for
XYZ(41.9123, 39.5548, 33.9858)
contains.

XYZ(41.8150, 39.5909, 33.8717)	3
<i>Conversions</i>	4
<i>Details</i>	6
<i>Harmonies</i>	12
<i>Previews</i>	24
<i>Color Blindness Simulation</i>	28
<i>CSS Examples</i>	31

Color

**XYZ(41.8150, 39.5909,
33.8717)**

Conversions

Conversions Part 1

Format	Color
Hex	C8A095
RGB	200, 160, 149
RGB Percent	78%, 63%, 58%
CMY	0.2157, 0.3725, 0.4157
CMYK	0.00, 0.20, 0.25, 0.22
HSL	13°, 32%, 68%
HSV	13°, 25%, 78%
XYZ	41.8150, 39.5909, 33.8717
YIQ	170.7060, 27.3710, 5.0590

Conversions

Conversions Part 2

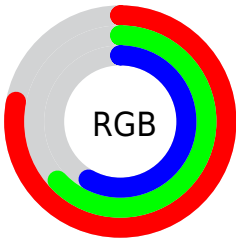
Format	Color
R _Y B	200, 163, 149
Decimal	13148309
CIE Lab	69.18, 13.14, 11.34
CIE LCh	69, 17.354, 40.809
Yxy	39.5909, 0.3627, 0.3434
Android (android.graphics.Color)	4291338389 (0xFFC8A095)
YUV	170.7060, -10.7011, 25.6908
Hunter-Lab	62.9213, 8.5117, 12.1280

Details

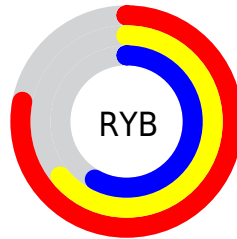
The XYZ color **41.8150, 39.5909, 33.8717** is a light color, and the websafe version is hex **CC9999**. A complement of this color would be **41.0168, 46.9534, 61.5448**, and the grayscale version is **38.6044, 40.6149, 44.2296**.

A 20% lighter version of the original color is **76.3199, 74.1727, 66.7942**, and **19.2442, 17.6267, 13.9433** is the 20% darker color. If you saturate the color by 10%, you get **37.8038, 33.9081, 25.3218**, and if you desaturate by 10%, it is **46.4456, 46.0731, 43.9818**.

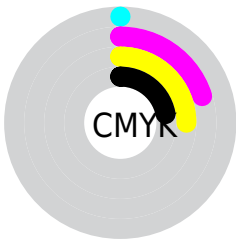
Distribution



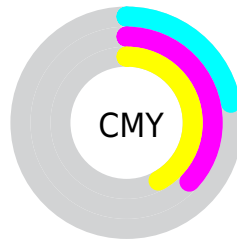
- Red (78%)
- Green (63%)
- Blue (58%)



- Red (78%)
- Yellow (64%)
- Blue (58%)



- Cyan (0%)
- Magenta (20%)
- Yellow (25%)
- Black (22%)





- Cyan (22%)
- Magenta (37%)
- Yellow (42%)

Brightness & Saturation Gradients


These gradients show how the XYZ color 41.8150, 39.5909, 33.8717 changes by changing the brightness by 10 percent. The first figure shows a shift by +10% for each color and the second figure -10%.


Similar to the brightness gradients but the following saturation gradients show a change of the XYZ color 41.8150, 39.5909, 33.8717 by changing the saturation by 10% instead.


 41.8150, 39.5909,
33.8717


 41.8150, 39.5909,
33.8717


344.7202,
344.3963, 334.3113

 29.1469, 27.2197,
22.5185


 77.1865, 74.5401,
66.8657

 19.3368, 17.7383,
14.0364


 100.6206, 97.8870,
89.3436

 12.0194, 10.7623,
8.0070


128.3741,
125.6612, 116.3668

 6.8292, 5.9072,
4.0116

160.8124,
158.2472, 148.3538

 3.4009, 2.7887,
1.6317

198.3008,
196.0292, 185.7233

 1.3691, 1.0225,
0.3133

241.2046,

 0.2341, 0.0000,

239.3919, 228.8936

0.0000

289.8893,
288.7194, 278.2834

■ 0.0000, 0.0000,
0.0000

■ 41.8150, 39.5909,
33.8717

■ 41.8150, 39.5909,
33.8717

■ 37.8038, 33.9081,
25.3218

■ 46.4456, 46.0731,
43.9818

■ 34.3822, 28.9882,
18.2515

■ 51.7175, 53.3787,
55.7222

■ 31.5223, 24.8000,
12.5769

■ 57.6554, 61.5372,
69.1616

■ 29.1930, 21.3078,
8.2046

■ 64.2818, 70.5752,
84.3641

■ 27.3597, 18.4728,
5.0295

■ 71.6180, 80.5179,
101.3905

■ 25.9834, 16.2525,
2.9300

■ 77.3472, 90.4549,
107.9906

■ 25.0185, 14.5985,
1.7577

■ 77.6295, 91.0194,
108.0847

■ 24.6889, 14.0183,
1.4046

Harmonies

Analogous

The Analogous color harmony consists of three colors that are next to each other on the color wheel.



43.1185, 39.5909, 40.3048



41.8150, 39.5909, 33.8717



39.4114, 39.5909, 30.2257

Triad

The Triadic color harmony groups three colors that are evenly spaced from another and form a triangle on the color wheel.



41.8150, 39.5909, 33.8717



32.8120, 39.5909, 38.2769



38.6396, 39.5909, 59.9285

Complementary

The Complementary color scheme is a pair of colors which are on the opposite of each other on the color wheel.



41.8150, 39.5909, 33.8717



41.0168, 46.9534, 61.5448

Split Complementary

Split-complementary colors differ from the complementary color scheme. The scheme consists of three colors, the original color and two neighbors of the complement color.



35.9030, 39.5909, 59.2113



41.8150, 39.5909, 33.8717



32.6282, 39.5909, 46.0378

Square

The Square scheme is like the rectangle color scheme, but the four colors are evenly spaced on the color wheel.



41.8150, 39.5909, 33.8717



34.2492, 39.5909, 32.5446



33.7339, 39.5909, 53.8865



41.2262, 39.5909, 55.7400

Rectangle

The Rectangle color scheme consists of four colors that form a rectangle on the color wheel.



41.8150, 39.5909, 33.8717



37.5546, 39.5909, 29.5616



33.7339, 39.5909, 53.8865



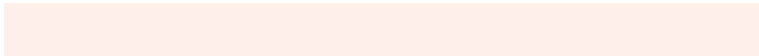
37.7054, 39.5909, 60.2650

Sweetspot

The Sweet Spot groups the original color and five complimentary colors.



41.8161, 39.5927, 33.8725



87.0446, 88.9690, 90.8796



43.8395, 37.4837, 53.5253



18.3270, 18.6222, 18.7728



0.0000, 0.0000, 0.0000



20.3446, 21.4041, 23.3091

Same Dimension

The Same Dimension uses a secret algorithm to generate beautiful new colors.



41.8161, 39.5927, 33.8725



68.1429, 62.5353, 49.5274



46.5307, 49.0221, 35.4441



10.8163, 11.0018, 11.1162



15.7526, 9.0223, 0.9112



0.8007, 0.5369, 0.0614

Inverse Universe

The Inverse Universe completely reimagines the original color for something new.



41.0168, 46.9534, 61.5448



66.5013, 77.5606, 106.0734



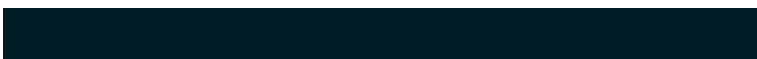
36.1494, 37.2186, 59.9223



10.7450, 11.6641, 13.6026



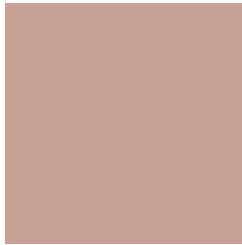
14.3463, 18.0865, 37.4793



0.7291, 0.9559, 1.7912

Previews

White Background



This preview shows how the XYZ color 41.8150, 39.5909, 33.8717 looks on a white background.

Color Contrast Check

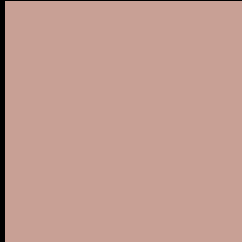
Large Text (above 18pt) WCAG AA × Fail

Any Text WCAG AA × Fail

Large Text (above 18pt) WCAG AAA × Fail

Any Text WCAG AAA × Fail

Black Background



This preview shows how the XYZ color 41.8150, 39.5909, 33.8717 looks on a black background.

Color Contrast Check

Large Text (above 18pt) WCAG AA ✓ Pass

Any Text WCAG AA ✓ Pass

Large Text (above 18pt) WCAG AAA ✓ Pass

Any Text WCAG AAA ✓ Pass

If you want to check with other color combinations, try the [Color Contrast Checker](#).

XYZ 41.8150, 39.5909, 33.8717

Background



This preview shows how black text looks on a background with the XYZ color 41.8150, 39.5909, 33.8717.



This preview shows how white text looks on a background with the XYZ color 41.8150, 39.5909,

Color Blindness Simulation

Color vision deficiency is a very complex topic, and I could not describe the different causes any better than Wikipedia does, so if you want to learn more, you should check out their [article about color blindness](#).

Dichromacy



Original Color

41.8150, 39.5909, 33.8717

Protanopia

37.8422, 39.9059, 35.8451

Deuteranopia

40.4348, 39.6700, 33.5429



Tritanopia

43.5755, 39.5351, 42.8705

Trichromacy



Original Color

41.8150, 39.5909, 33.8717

Protanomaly

39.3113, 39.8537, 35.3264

Deuteranomaly

41.0306, 39.7145, 33.5201

Tritanomaly

42.8358, 39.4799, 39.5451

Monochromacy



Original Color

41.8150, 39.5909, 33.8717

Achromatopsia

38.7082, 40.7240, 44.3485

Achromatomaly

39.7210, 40.2269, 40.3214

CSS Examples

Text

The CSS property to change the color of the text to XYZ 41.8150, 39.5909, 33.8717 is called "color". The color property can be set on classes, ids or directly on the HTML element.

This example shows how text in the color `rgb(200, 160, 149)` looks like.

```
.text, #text, p{  
    color:rgb(200, 160, 149)  
}
```

If you want to add a text shadow in that color use the text-shadow property, you can generate a text shadow directly with our [CSS Text Shadow Generator](#).

Here you see how black text with a 4 pixel rgb(200, 160, 149) colored shadow looks like.

```
.shadow{ text-shadow: 4px 4px 2px rgb(200, 160, 149) }
```

Border

The CSS property to change the border of an element to XYZ 41.8150, 39.5909, 33.8717 is called "border". The border property can be set on classes, ids or directly on the HTML element.

This example shows the color as border, it can be applied via the CSS property "border" or "border-color".

```
.border, #border, table{ border:4px solid rgb(200, 160, 149) }
```


If only the border color should be changed use the property `border-color`.

```
.border{ border-color:rgb(200, 160, 149) }
```

If you want to add a box shadow in that color use:

Here you see how a box with a 4 pixel `rgb(200, 160, 149)` colored shadow looks like.

```
.boxshadow{ -moz-box-shadow:4px 4px 4px  
4px rgb(200, 160, 149); -webkit-box-  
shadow:4px 4px 4px 4px rgb(200, 160, 149);  
box-shadow:4px 4px 4px 4px rgb(200, 160,  
149) }
```

Background

The CSS property to change the background color of an element to XYZ 41.8150, 39.5909, 33.8717 is called "background". The background property can be set on classes, ids or directly on the HTML element.

```
.background, #background, body{  
background: rgb(200, 160, 149) }
```

If only the background color should be changed can be used:

```
.background{ background-color: rgb(200,  
160, 149) }
```

This example shows the color as background, it is applied via the CSS property "background".

To optimize and compress your CSS code, you can use our [online CSS compressor and optimizer](#) based on csstidy. If you want to create a linear or radial gradient as background or border, check our [CSS Gradient Generator](#).

Hey! You found this booklet interesting? Support Converting Colors with the new Membership Option!

The pro membership hides all ads, plus gives you double the colors in the color bucket, and more awesome pro features!

[Learn more, Memberships starting at \\$2.50/m!](#)

**Follow me
on Twitter!**

@ConvertingColor