

# Converting Colors

XYZ(41.9702, 40.5973, 40.7976)

Have a look what the booklet for  
XYZ(41.9702, 40.5973, 40.7976)  
contains.

<b>XYZ(41.9686, 40.5687, 40.7405)</b> .....	3
<b><i>Conversions</i></b> .....	4
<b><i>Details</i></b> .....	6
<b><i>Harmonies</i></b> .....	12
<b><i>Previews</i></b> .....	24
<b><i>Color Blindness Simulation</i></b> .....	28
<b><i>CSS Examples</i></b> .....	31

# Color

**XYZ(41.9686, 40.5687,  
40.7405)**

# Conversions

## Conversions Part 1

Format	Color
Hex	C1A4A4
RGB	193, 164, 164
RGB Percent	76%, 64%, 64%
CMY	0.2431, 0.3568, 0.3569
CMYK	0.00, 0.15, 0.15, 0.24
HSL	0°, 19%, 70%
HSV	0°, 15%, 76%
XYZ	41.9686, 40.5687, 40.7405
YIQ	172.6710, 17.2840, 6.1480

# Conversions

## Conversions Part 2

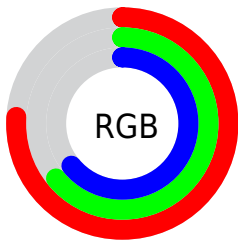
Format	Color
R <sub>Y</sub> B	193, 164, 164
Decimal	12690596
CIE Lab	69.87, 10.60, 3.94
CIE LCh	70, 11.310, 20.377
Yxy	40.5687, 0.3404, 0.3291
Android (android.graphics.Color)	4290880676 (0xFFC1A4A4)
YUV	172.6710, -4.2748, 17.8285
Hunter-Lab	63.6936, 6.1525, 6.6617

# Details

The XYZ color **41.9686, 40.5687, 40.7405** is a light color, and the websafe version is hex **CC9999**. A complement of this color would be **44.0051, 49.8816, 57.7612**, and the grayscale version is **39.5688, 41.6295, 45.3345**.

A 20% lighter version of the original color is **77.5420, 76.1015, 77.6200**, and **19.3663, 18.2472, 17.8306** is the 20% darker color. If you saturate the color by 10%, you get **37.1610, 33.5340, 31.1815**, and if you desaturate by 10%, it is **47.5670, 48.7609, 51.8690**.

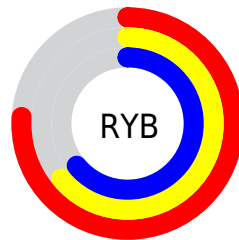
# Distribution



Red (76%)

Green (64%)

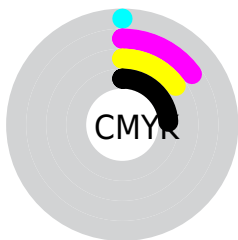
Blue (64%)



Red (76%)

Yellow (64%)

Blue (64%)

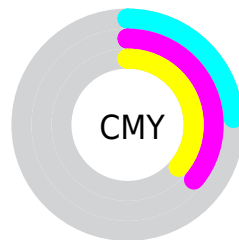


Cyan (0%)

Magenta (15%)

Yellow (15%)

Black (24%)



Cyan (24%)

Magenta (36%)


Yellow (36%)


# Brightness & Saturation Gradients

These gradients show how the XYZ color 41.9686, 40.5687, 40.7405 changes by changing the brightness by 10 percent. The first figure shows a shift by +10% for each color and the second figure -10%.


Similar to the brightness gradients but the following saturation gradients show a change of the XYZ color 41.9686, 40.5687, 40.7405 by changing the saturation by 10% instead.





 41.9686, 40.5687,  
40.7405


 41.9686, 40.5687,  
40.7405


345.3466,  
348.5148, 364.8793

 29.2677, 27.9822,  
27.7982


 77.4176, 76.0287,  
77.5392

 19.4287, 18.3123,  
17.9359

 100.8963, 99.6711,  
102.2327

 12.0863, 11.1744,  
10.7350


128.6985,  
127.7675, 131.6803

 6.8751, 6.1843,  
5.7770

161.1893,  
160.7024, 166.3006

 3.4297, 2.9575,  
2.6434

198.7341,  
198.8602, 206.5121

 1.3849, 1.1096,  
0.9147

241.6984,

 0.2454, 0.0000,

242.6253, 252.7334

0.0000

290.4474,  
292.3820, 305.3829

■ 0.0000, 0.0000,  
0.0000

■ 41.9686, 40.5687,  
40.7405

■ 41.9686, 40.5687,  
40.7405

■ 37.1610, 33.5340,  
31.1815

■ 47.5670, 48.7609,  
51.8690

■ 33.1054, 27.5996,  
23.1190

■ 53.9861, 58.1536,  
64.6305

■ 29.7648, 22.7113,  
16.4782

■ 61.2582, 68.7945,  
79.0879

■ 27.0978, 18.8087,  
11.1765

■ 69.4130, 80.7269,  
95.3003

■ 25.0587, 15.8248,  
7.1231

■ 75.8025, 90.0775,  
107.9992

■ 23.5960, 13.6844,  
4.2158

■ 22.6504, 12.3006,  
2.3364

■ 22.1495, 11.5675,  
1.3410

■ 21.9927, 11.3381,  
1.0293

# Harmonies

## Analogous

The Analogous color harmony consists of three colors that are next to each other on the color wheel.



42.1503, 40.5687, 45.8863



41.9686, 40.5687, 40.7405



40.8577, 40.5687, 36.8249

# Triad

The Triadic color harmony groups three colors that are evenly spaced from another and form a triangle on the color wheel.



41.9686, 40.5687, 40.7405



35.9003, 40.5687, 38.0261



37.9715, 40.5687, 54.9235

# Complementary

The Complementary color scheme is a pair of colors which are on the opposite of each other on the color wheel.



41.9686, 40.5687, 40.7405



44.0051, 49.8816, 57.7612

# Split Complementary

Split-complementary colors differ from the complementary color scheme. The scheme consists of three colors, the original color and two neighbors of the complement color.



36.3488, 40.5687, 52.4376



41.9686, 40.5687, 40.7405



35.1783, 40.5687, 42.5018

# Square

The Square scheme is like the rectangle color scheme, but the four colors are evenly spaced on the color wheel.



41.9686, 40.5687, 40.7405



37.3416, 40.5687, 35.3463



35.3399, 40.5687, 47.7919



39.8032, 40.5687, 54.3577



# Rectangle

The Rectangle color scheme consists of four colors that form a rectangle on the color wheel.



41.9686, 40.5687, 40.7405



39.7586, 40.5687, 35.3070



35.3399, 40.5687, 47.7919



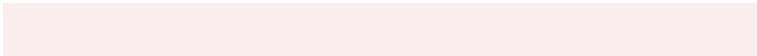
37.3845, 40.5687, 54.4100

# Sweetspot

The Sweet Spot groups the original color and five complimentary colors.



41.9697, 40.5705, 40.7414



85.1359, 87.2477, 92.7847



44.8939, 41.7392, 56.1427



18.1021, 18.4799, 19.5825



92.9021, 97.7402, 106.4391



19.4759, 20.4902, 22.3138



# Same Dimension

The Same Dimension uses a secret algorithm to generate beautiful new colors.



41.9697, 40.5705, 40.7414



72.2111, 68.3354, 67.0898



44.7137, 46.0584, 41.6560



10.0733, 10.0781, 10.4762



14.6277, 7.5412, 0.6846



0.6321, 0.3259, 0.0296

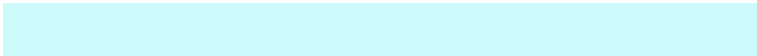


# Inverse Universe

The Inverse Universe completely reimagines the original color for something new.



44.0051, 49.8816, 57.7612



76.5467, 88.1690, 103.3442



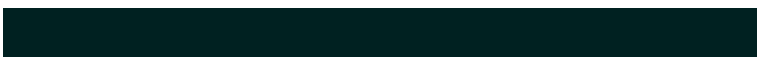
40.9560, 43.7834, 56.7449



10.3685, 11.4283, 12.9442



19.0826, 27.9216, 37.9403

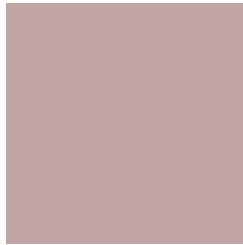


0.8245, 1.2065, 1.6393



# Previews

## White Background



This preview shows how the XYZ color 41.9686, 40.5687, 40.7405 looks on a white background.

## Color Contrast Check

Large Text (above 18pt) WCAG AA × Fail

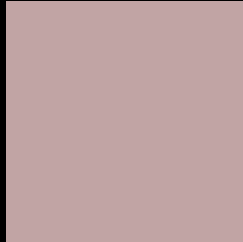
Any Text WCAG AA × Fail

Large Text (above 18pt) WCAG AAA × Fail

Any Text WCAG AAA × Fail



# Black Background



This preview shows how the XYZ color 41.9686, 40.5687, 40.7405 looks on a black background.

## Color Contrast Check

Large Text (above 18pt) WCAG AA ✓ Pass

Any Text WCAG AA ✓ Pass

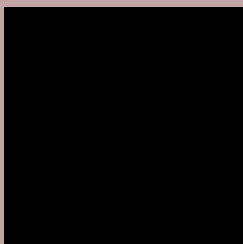
Large Text (above 18pt) WCAG AAA ✓ Pass

Any Text WCAG AAA ✓ Pass

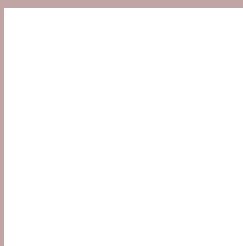
If you want to check with other color combinations, try the [Color Contrast Checker](#).

**XYZ 41.9686, 40.5687, 40.7405**

## **Background**



This preview shows how black text looks on a background with the XYZ color 41.9686, 40.5687, 40.7405.



This preview shows how white text looks on a background with the XYZ color 41.9686, 40.5687,

40.7405.

# Color Blindness Simulation

Color vision deficiency is a very complex topic, and I could not describe the different causes any better than Wikipedia does, so if you want to learn more, you should check out their [article about color blindness](#).

## Dichromacy



### Original Color

41.9686, 40.5687, 40.7405

### Protanopia

39.0290, 40.6534, 42.3491

### Deuteranopia

41.3912, 40.5378, 40.7650



## Tritanopia

42.9063, 40.4051, 46.0950

# Trichromacy



## Original Color

41.9686, 40.5687, 40.7405

## Protanomaly

40.1770, 40.7035, 41.8154

## Deuteranomaly

41.6418, 40.6670, 40.7767

## Tritanomaly

42.6960, 40.6040, 44.1151

# Monochromacy



## Original Color

41.9686, 40.5687, 40.7405

## Achromatopsia

39.7200, 41.7885, 45.5077

## Achromatomaly

40.4528, 41.3550, 43.8804

# CSS Examples

## Text

The CSS property to change the color of the text to XYZ 41.9686, 40.5687, 40.7405 is called "color". The color property can be set on classes, ids or directly on the HTML element.

This example shows how text in the color `rgb(193, 164, 164)` looks like.

```
.text, #text, p{  
    color:rgb(193, 164, 164)  
}
```

If you want to add a text shadow in that color use the text-shadow property, you can generate a text shadow directly with our [CSS Text Shadow Generator](#).

Here you see how black text with a 4 pixel rgb(193, 164, 164) colored shadow looks like.

```
.shadow{ text-shadow: 4px 4px 2px rgb(193, 164, 164) }
```

## Border

The CSS property to change the border of an element to XYZ 41.9686, 40.5687, 40.7405 is called "border". The border property can be set on classes, ids or directly on the HTML element.

This example shows the color as border, it can be applied via the CSS property "border" or "border-color".

```
.border, #border, table{ border:4px solid rgb(193, 164, 164) }
```



If only the border color should be changed use the property `border-color`.

```
.border{ border-color:rgb(193, 164, 164) }
```

If you want to add a box shadow in that color use:

Here you see how a box with a 4 pixel `rgb(193, 164, 164)` colored shadow looks like.

```
.boxshadow{ -moz-box-shadow:4px 4px 4px  
4px rgb(193, 164, 164); -webkit-box-  
shadow:4px 4px 4px 4px rgb(193, 164, 164);  
box-shadow:4px 4px 4px 4px rgb(193, 164,  
164) }
```

# Background

The CSS property to change the background color of an element to XYZ 41.9686, 40.5687, 40.7405 is called "background". The background property can be set on classes, ids or directly on the HTML element.

```
.background, #background, body{  
background: rgb(193, 164, 164) }
```

If only the background color should be changed can be used:

```
.background{ background-color: rgb(193,  
164, 164) }
```

This example shows the color as background, it is applied via the CSS property "background".

To optimize and compress your CSS code, you can use our [online CSS compressor and optimizer](#) based on csstidy. If you want to create a linear or radial gradient as background or border, check our [CSS Gradient Generator](#).

Hey! You found this booklet interesting? Support Converting Colors with the new Membership Option!

The pro membership hides all ads, plus gives you double the colors in the color bucket, and more awesome pro features!

**[Learn more, Memberships starting at \\$2.50/m!](#)**

**Follow me  
on Twitter!**

@ConvertingColor