

Converting Colors

XYZ(41.9970, 41.2060, 24.8103)

Have a look what the booklet for
XYZ(41.9970, 41.2060, 24.8103)
contains.

XYZ(41.9951, 41.2029, 24.8084)	3
<i>Conversions</i>	4
<i>Details</i>	6
<i>Harmonies</i>	12
<i>Previews</i>	24
<i>Color Blindness Simulation</i>	28
<i>CSS Examples</i>	31

Color

**XYZ(41.9951, 41.2029,
24.8084)**

Conversions

Conversions Part 1

Format	Color
Hex	CCA57C
RGB	204, 165, 124
RGB Percent	80%, 65%, 49%
CMY	0.2000, 0.3529, 0.5137
CMYK	0.00, 0.19, 0.39, 0.20
HSL	31°, 44%, 64%
HSV	31°, 39%, 80%
XYZ	41.9951, 41.2029, 24.8084
YIQ	171.9870, 36.4050, -4.4830

Conversions

Conversions Part 2

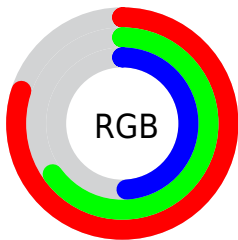
Format	Color
R _Y B	200, 204, 124
Decimal	13411708
CIE Lab	70.32, 8.76, 26.67
CIE LCh	70, 28.072, 71.809
Yxy	41.2029, 0.3888, 0.3815
Android (android.graphics.Color)	4291601788 (0xFFCCA57C)
YUV	171.9870, -23.6576, 28.0754
Hunter-Lab	64.1895, 4.4496, 22.0178

Details

The XYZ color **41.9951, 41.2029, 24.8084** is a light color, and the websafe version is hex **CC9966**. A complement of this color would be **32.3081, 34.8380, 62.1483**, and the grayscale version is **39.3101, 41.3572, 45.0380**.

A 20% lighter version of the original color is **74.7690, 75.6207, 52.2505**, and **19.3879, 18.6142, 9.2276** is the 20% darker color. If you saturate the color by 10%, you get **39.1119, 37.2919, 18.1275**, and if you desaturate by 10%, it is **45.2867, 45.5035, 32.9430**.

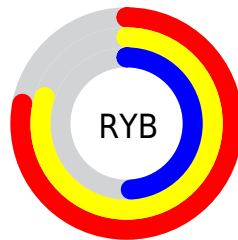
Distribution



Red (80%)

Green (65%)

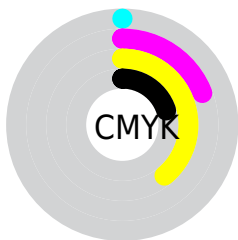
Blue (49%)



Red (78%)

Yellow (80%)

Blue (49%)

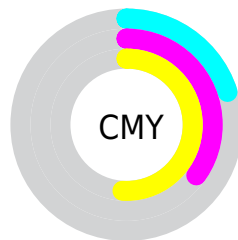


Cyan (0%)

Magenta (19%)

Yellow (39%)

Black (20%)



Cyan (20%)


Magenta (35%)


Yellow (51%)

Brightness & Saturation Gradients


These gradients show how the XYZ color 41.9951, 41.2029, 24.8084 changes by changing the brightness by 10 percent. The first figure shows a shift by +10% for each color and the second figure -10%.


Similar to the brightness gradients but the following saturation gradients show a change of the XYZ color 41.9951, 41.2029, 24.8084 by changing the saturation by 10% instead.


 41.9951, 41.2029,
24.8084


 41.9951, 41.2029,
24.8084


345.4546,
351.1679, 290.2995

 29.2885, 28.4777,
15.7166


 77.4574, 76.9918,
52.3065

 19.4446, 18.6860,
9.1717


 100.9439,
100.8243, 71.5499

 12.0979, 11.4436,
4.7550


 128.7544,
129.1279, 95.0143

 6.8830, 6.3661,
2.0480

161.2543,
162.2872, 123.1181

 3.4347, 3.0689,
0.5846

198.8089,
200.6864, 156.2801

 1.3876, 1.1678,
0.0000

241.7835,

 0.2474, 0.0352,

244.7100, 194.9186

0.0000

290.5437,
294.7424, 239.4522

0.0000, 0.0000,
0.0000

41.9951, 41.2029,
24.8084

41.9951, 41.2029,
24.8084

39.1119, 37.2919,
18.1275

45.2867, 45.5035,
32.9430

36.6144, 33.7518,
12.8095

49.0019, 50.2000,
42.6096

34.4818, 30.5705,
8.7569

53.1587, 55.3058,
53.8840

32.6897, 27.7329,
5.8584

57.7730, 60.8321,
66.8359

31.2101, 25.2221,
3.9825

62.8599, 66.7892,
81.5313

■ 29.9971, 23.0139,
2.9071

■ 68.4338, 73.1872,
98.0321

■ 29.9089, 22.8514,
2.8344

■ 72.5493, 79.2523,
106.0812

■ 75.4701, 85.0940,
107.0548

■ 78.5526, 91.2588,
108.0823

Harmonies

Analogous

The Analogous color harmony consists of three colors that are next to each other on the color wheel.



46.1479, 41.2029, 29.9775



41.9951, 41.2029, 24.8084



37.3758, 41.2029, 24.3189

Triad

The Triadic color harmony groups three colors that are evenly spaced from another and form a triangle on the color wheel.



41.9951, 41.2029, 24.8084



31.1103, 41.2029, 50.2618



45.3739, 41.2029, 66.5708

Complementary

The Complementary color scheme is a pair of colors which are on the opposite of each other on the color wheel.



41.9951, 41.2029, 24.8084



32.3081, 34.8380, 62.1483

Split Complementary

Split-complementary colors differ from the complementary color scheme. The scheme consists of three colors, the original color and two neighbors of the complement color.



41.0045, 41.2029, 74.5833



41.9951, 41.2029, 24.8084



32.9195, 41.2029, 64.0049

Square

The Square scheme is like the rectangle color scheme, but the four colors are evenly spaced on the color wheel.



41.9951, 41.2029, 24.8084



31.3299, 41.2029, 37.3952



36.4595, 41.2029, 73.5616



48.2017, 41.2029, 53.2641

Rectangle

The Rectangle color scheme consists of four colors that form a rectangle on the color wheel.



41.9951, 41.2029, 24.8084



34.6730, 41.2029, 26.5623



36.4595, 41.2029, 73.5616



44.0228, 41.2029, 70.0802

Sweetspot

The Sweet Spot groups the original color and five complimentary colors.



41.9961, 41.2048, 24.8092



85.9338, 89.0333, 83.4617



38.8106, 29.9335, 38.8546



18.1954, 18.8146, 17.3247



0.0000, 0.0000, 0.0000



20.3446, 21.4041, 23.3091

Same Dimension

The Same Dimension uses a secret algorithm to generate beautiful new colors.



41.9961, 41.2048, 24.8092



65.4947, 62.7555, 31.6381



50.1329, 57.4784, 27.5215



11.6798, 12.1486, 11.8088



18.9186, 14.5701, 1.8152



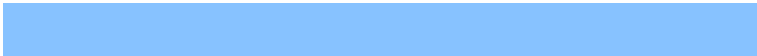
1.0518, 0.9033, 0.1189

Inverse Universe

The Inverse Universe completely reimagines the original color for something new.



32.3081, 34.8380, 62.1483



47.2621, 50.7759, 101.9175



26.4194, 23.0606, 60.1854



11.0456, 11.7316, 14.2526



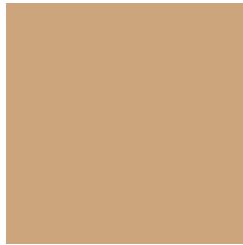
9.7871, 8.5983, 37.1001



0.5808, 0.5954, 1.9392

Previews

White Background



This preview shows how the XYZ color 41.9951, 41.2029, 24.8084 looks on a white background.

Color Contrast Check

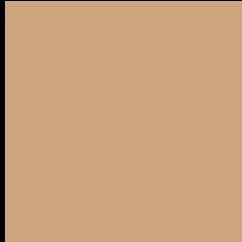
Large Text (above 18pt) WCAG AA × Fail

Any Text WCAG AA × Fail

Large Text (above 18pt) WCAG AAA × Fail

Any Text WCAG AAA × Fail

Black Background



This preview shows how the XYZ color 41.9951, 41.2029, 24.8084 looks on a black background.

Color Contrast Check

Large Text (above 18pt) WCAG AA ✓ Pass

Any Text WCAG AA ✓ Pass

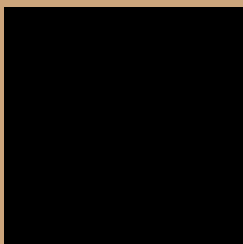
Large Text (above 18pt) WCAG AAA ✓ Pass

Any Text WCAG AAA ✓ Pass

If you want to check with other color combinations, try the [Color Contrast Checker](#).

XYZ 41.9951, 41.2029, 24.8084

Background



This preview shows how black text looks on a background with the XYZ color 41.9951, 41.2029, 24.8084.



This preview shows how white text looks on a background with the XYZ color 41.9951, 41.2029,

Color Blindness Simulation

Color vision deficiency is a very complex topic, and I could not describe the different causes any better than Wikipedia does, so if you want to learn more, you should check out their [article about color blindness](#).

Dichromacy



Original Color

41.9951, 41.2029, 24.8084

Protanopia

38.5909, 41.3516, 26.0264

Deuteranopia

41.9951, 41.2029, 24.8084



Tritanopia

46.0433, 41.2919, 44.0715

Trichromacy



Original Color

41.9951, 41.2029, 24.8084

Protanomaly

39.6921, 41.0888, 25.5776

Deuteranomaly

41.9951, 41.2029, 24.8084

Tritanomaly

44.3097, 41.0882, 36.1673

Monochromacy



Original Color

41.9951, 41.2029, 24.8084

Achromatopsia

39.2122, 41.2543, 44.9259

Achromatomaly

39.8715, 40.9328, 36.8097

CSS Examples

Text

The CSS property to change the color of the text to XYZ 41.9951, 41.2029, 24.8084 is called "color". The color property can be set on classes, ids or directly on the HTML element.

This example shows how text in the color `rgb(204, 165, 124)` looks like.

```
.text, #text, p{  
    color:rgb(204, 165, 124)  
}
```

If you want to add a text shadow in that color use the text-shadow property, you can generate a text shadow directly with our [CSS Text Shadow Generator](#).

Here you see how black text with a 4 pixel rgb(204, 165, 124) colored shadow looks like.

```
.shadow{ text-shadow: 4px 4px 2px rgb(204, 165, 124) }
```

Border

The CSS property to change the border of an element to XYZ 41.9951, 41.2029, 24.8084 is called "border". The border property can be set on classes, ids or directly on the HTML element.

This example shows the color as border, it can be applied via the CSS property "border" or "border-color".

```
.border, #border, table{ border:4px solid rgb(204, 165, 124) }
```


If only the border color should be changed use the property border-color.

```
.border{ border-color:rgb(204, 165, 124) }
```

If you want to add a box shadow in that color use:

Here you see how a box with a 4 pixel rgb(204, 165, 124) colored shadow looks like.

```
.boxshadow{ -moz-box-shadow:4px 4px 4px  
4px rgb(204, 165, 124); -webkit-box-  
shadow:4px 4px 4px 4px rgb(204, 165, 124);  
box-shadow:4px 4px 4px 4px rgb(204, 165,  
124) }
```

Background

The CSS property to change the background color of an element to XYZ 41.9951, 41.2029, 24.8084 is called "background". The background property can be set on classes, ids or directly on the HTML element.

```
.background, #background, body{  
background: rgb(204, 165, 124) }
```

If only the background color should be changed can be used:

```
.background{ background-color: rgb(204,  
165, 124) }
```

This example shows the color as background, it is applied via the CSS property "background".

To optimize and compress your CSS code, you can use our [online CSS compressor and optimizer](#) based on csstidy. If you want to create a linear or radial gradient as background or border, check our [CSS Gradient Generator](#).

Hey! You found this booklet interesting? Support Converting Colors with the new Membership Option!

The pro membership hides all ads, plus gives you double the colors in the color bucket, and more awesome pro features!

[Learn more, Memberships starting at \\$2.50/m!](#)

**Follow me
on Twitter!**

@ConvertingColor