

Converting Colors

XYZ(41.9996, 41.0344, 41.6631)

Have a look what the booklet for
XYZ(41.9996, 41.0344, 41.6631)
contains.

XYZ(42.0050, 41.1020, 41.7960)	3
<i>Conversions</i>	4
<i>Details</i>	6
<i>Harmonies</i>	12
<i>Previews</i>	24
<i>Color Blindness Simulation</i>	28
<i>CSS Examples</i>	31

Color

**XYZ(42.0050, 41.1020,
41.7960)**

Conversions

Conversions Part 1

Format	Color
Hex	BFA6A6
RGB	191, 166, 166
RGB Percent	75%, 65%, 65%
CMY	0.2510, 0.3490, 0.3490
CMYK	0.00, 0.13, 0.13, 0.25
HSL	0°, 16%, 70%
HSV	0°, 13%, 75%
XYZ	42.0050, 41.1020, 41.7960
YIQ	173.4750, 14.9000, 5.3000

Conversions

Conversions Part 2

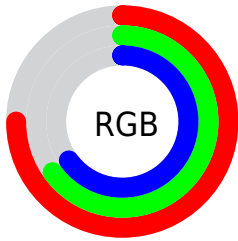
Format	Color
RYB	191, 166, 166
Decimal	12560038
CIELab	70.25, 9.10, 3.35
CIElCh	70, 9.695, 20.216
Yxy	41.1020, 0.3363, 0.3291
Android (android.graphics.Color)	4290750118 (0xFFBFA6A6)
YUV	173.4750, -3.6852, 15.3694
Hunter-Lab	64.1108, 4.7580, 6.2245

Details

The XYZ color **42.0050, 41.1020, 41.7960** is a light color, and the websafe version is hex **CC9999**. A complement of this color would be **43.7604, 49.1291, 56.4670**, and the grayscale version is **39.9769, 42.0588, 45.8021**.

A 20% lighter version of the original color is **77.6190, 76.8898, 79.1569**, and **19.3711, 18.5679, 18.4826** is the 20% darker color. If you saturate the color by 10%, you get **37.1640, 34.0186, 32.1706**, and if you desaturate by 10%, it is **47.6240, 49.3242, 52.9655**.

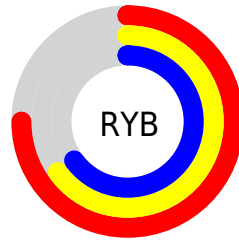
Distribution



Red (75%)

Green (65%)

Blue (65%)



Red (75%)

Yellow (65%)

Blue (65%)

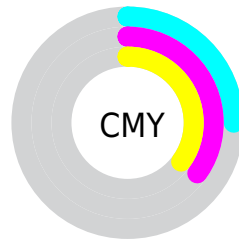


Cyan (0%)

Magenta (13%)

Yellow (13%)

Black (25%)



Cyan (25%)


Magenta (35%)


Yellow (35%)

Brightness & Saturation Gradients


These gradients show how the XYZ color 42.0050, 41.1020, 41.7960 changes by changing the brightness by 10 percent. The first figure shows a shift by +10% for each color and the second figure -10%.


Similar to the brightness gradients but the following saturation gradients show a change of the XYZ color 42.0050, 41.1020, 41.7960 by changing the saturation by 10% instead.


 42.0050, 41.1020,
41.7960


 42.0050, 41.1020,
41.7960


345.4949,
350.7467, 369.4113

 29.2963, 28.3988,
28.6172


 77.4723, 76.8387,
79.1575

 19.4505, 18.6265,
18.5484


 100.9617,
100.6410, 104.1774

 12.1022, 11.4007,
11.1709


128.7753,
128.9118, 133.9813

 6.8860, 6.3370,
6.0663

161.2785,
162.0354, 168.9879

 3.4366, 3.0511,
2.8160

198.8368,
200.3964, 209.6156

 1.3886, 1.1585,
1.0015

241.8153,

 0.2481, 0.0274,

244.3790, 256.2831

0.0000

290.5796,
294.3676, 309.4088

■ 0.0000, 0.0000,
0.0000

■ 42.0050, 41.1020,
41.7960

■ 42.0050, 41.1020,
41.7960

■ 37.1640, 34.0186,
32.1706

■ 47.6240, 49.3242,
52.9655

■ 33.0636, 28.0185,
24.0190

■ 54.0496, 58.7264,
65.7401

■ 29.6683, 23.0502,
17.2692

■ 61.3131, 69.3546,
80.1805

■ 26.9383, 19.0554,
11.8423

■ 69.4430, 81.2506,
96.3438

■ 24.8301, 15.9704,
7.6515

■ 75.2960, 89.8164,
107.9755

■ 23.2947, 13.7236,
4.5997

■ 22.2761, 12.2329,
2.5751

■ 21.7068, 11.3997,
1.4439

■ 21.4863, 11.0770,
1.0056

Harmonies

Analogous

The Analogous color harmony consists of three colors that are next to each other on the color wheel.



42.1561, 41.1020, 46.2570



42.0050, 41.1020, 41.7960



41.0547, 41.1020, 38.3581

Triad

The Triadic color harmony groups three colors that are evenly spaced from another and form a triangle on the color wheel.



42.0050, 41.1020, 41.7960



36.7643, 41.1020, 39.3825



38.5492, 41.1020, 53.9449

Complementary

The Complementary color scheme is a pair of colors which are on the opposite of each other on the color wheel.



42.0050, 41.1020, 41.7960



43.7604, 49.1291, 56.4670

Split Complementary

Split-complementary colors differ from the complementary color scheme. The scheme consists of three colors, the original color and two neighbors of the complement color.



37.1430, 41.1020, 51.8221



42.0050, 41.1020, 41.7960



36.1311, 41.1020, 43.2821

Square

The Square scheme is like the rectangle color scheme, but the four colors are evenly spaced on the color wheel.



42.0050, 41.1020, 41.7960



38.0196, 41.1020, 37.0315



36.2678, 41.1020, 47.8465



40.1319, 41.1020, 53.4797

Rectangle

The Rectangle color scheme consists of four colors that form a rectangle on the color wheel.



42.0050, 41.1020, 41.7960



40.1099, 41.1020, 37.0116



36.2678, 41.1020, 47.8465



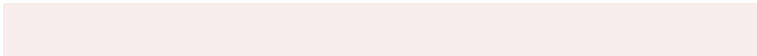
38.0408, 41.1020, 53.5051

Sweetspot

The Sweet Spot groups the original color and five complimentary colors.



42.0061, 41.1038, 41.7969



84.2509, 86.8125, 92.7865



44.5265, 42.1110, 55.0720



18.3237, 18.8041, 20.0230



92.9021, 97.7402, 106.4391



19.4759, 20.4902, 22.3138

Same Dimension

The Same Dimension uses a secret algorithm to generate beautiful new colors.



42.0061, 41.1038, 41.7969



72.3409, 69.3851, 69.1087



44.3893, 45.8702, 42.5913



9.5303, 9.5366, 9.9151



14.1205, 7.2797, 0.6609



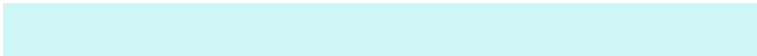
0.5531, 0.2852, 0.0259

Inverse Universe

The Inverse Universe completely reimagines the original color for something new.



43.7604, 49.1291, 56.4670



76.1577, 86.8466, 101.0283



41.1504, 43.9092, 55.5970



9.8085, 10.8093, 12.2417



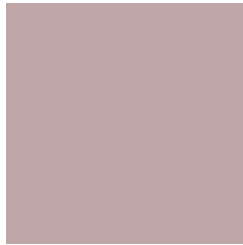
18.4203, 26.9524, 36.6244



0.7216, 1.0558, 1.4346

Previews

White Background



This preview shows how the XYZ color 42.0050, 41.1020, 41.7960 looks on a white background.

Color Contrast Check

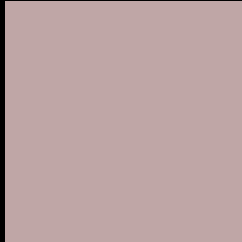
Large Text (above 18pt) WCAG AA × Fail

Any Text WCAG AA × Fail

Large Text (above 18pt) WCAG AAA × Fail

Any Text WCAG AAA × Fail

Black Background



This preview shows how the XYZ color 42.0050, 41.1020, 41.7960 looks on a black background.

Color Contrast Check

Large Text (above 18pt) WCAG AA ✓ Pass

Any Text WCAG AA ✓ Pass

Large Text (above 18pt) WCAG AAA ✓ Pass

Any Text WCAG AAA ✓ Pass

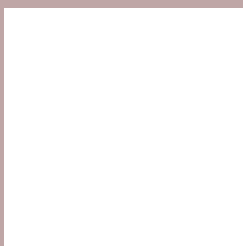
If you want to check with other color combinations, try the [Color Contrast Checker](#).

XYZ 42.0050, 41.1020, 41.7960

Background



This preview shows how black text looks on a background with the XYZ color 42.0050, 41.1020, 41.7960.



This preview shows how white text looks on a background with the XYZ color 42.0050, 41.1020,

Color Blindness Simulation

Color vision deficiency is a very complex topic, and I could not describe the different causes any better than Wikipedia does, so if you want to learn more, you should check out their [article about color blindness](#).

Dichromacy



Original Color

42.0050, 41.1020, 41.7960

Protanopia

39.6288, 41.2205, 43.4038

Deuteranopia

42.0050, 41.1020, 41.7960



Tritanopia

42.9495, 40.9317, 47.2319

Trichromacy



Original Color

42.0050, 41.1020, 41.7960

Protanomaly

40.3119, 41.0268, 42.8401

Deuteranomaly

42.0050, 41.1020, 41.7960

Tritanomaly

42.7362, 41.1339, 45.2224

Monochromacy



Original Color

42.0050, 41.1020, 41.7960

Achromatopsia

39.7200, 41.7885, 45.5077

Achromatomaly

40.4528, 41.3550, 43.8804

CSS Examples

Text

The CSS property to change the color of the text to XYZ 42.0050, 41.1020, 41.7960 is called "color". The color property can be set on classes, ids or directly on the HTML element.

This example shows how text in the color `rgb(191, 166, 166)` looks like.

```
.text, #text, p{  
    color:rgb(191, 166, 166)  
}
```

If you want to add a text shadow in that color use the text-shadow property, you can generate a text shadow directly with our [CSS Text Shadow Generator](#).

Here you see how black text with a 4 pixel rgb(191, 166, 166) colored shadow looks like.

```
.shadow{ text-shadow: 4px 4px 2px rgb(191, 166, 166) }
```

Border

The CSS property to change the border of an element to XYZ 42.0050, 41.1020, 41.7960 is called "border". The border property can be set on classes, ids or directly on the HTML element.

This example shows the color as border, it can be applied via the CSS property "border" or "border-color".

```
.border, #border, table{ border:4px solid rgb(191, 166, 166) }
```


If only the border color should be changed use the property `border-color`.

```
.border{ border-color:rgb(191, 166, 166) }
```

If you want to add a box shadow in that color use:

Here you see how a box with a 4 pixel `rgb(191, 166, 166)` colored shadow looks like.

```
.boxshadow{ -moz-box-shadow:4px 4px 4px  
4px rgb(191, 166, 166); -webkit-box-  
shadow:4px 4px 4px 4px rgb(191, 166, 166);  
box-shadow:4px 4px 4px 4px rgb(191, 166,  
166) }
```

Background

The CSS property to change the background color of an element to XYZ 42.0050, 41.1020, 41.7960 is called "background". The background property can be set on classes, ids or directly on the HTML element.

```
.background, #background, body{  
background: rgb(191, 166, 166) }
```

If only the background color should be changed can be used:

```
.background{ background-color: rgb(191,  
166, 166) }
```

This example shows the color as background, it is applied via the CSS property "background".

To optimize and compress your CSS code, you can use our [online CSS compressor and optimizer](#) based on csstidy. If you want to create a linear or radial gradient as background or border, check our [CSS Gradient Generator](#).

Hey! You found this booklet interesting? Support Converting Colors with the new Membership Option!

The pro membership hides all ads, plus gives you double the colors in the color bucket, and more awesome pro features!

[Learn more, Memberships starting at \\$2.50/m!](#)

**Follow me
on Twitter!**

@ConvertingColor