

Converting Colors

XYZ(42.0076, 43.4260, 50.9546)

Have a look what the booklet for
XYZ(42.0076, 43.4260, 50.9546)
contains.

XYZ(42.0087, 43.4260, 50.9677)	3
<i>Conversions</i>	4
<i>Details</i>	6
<i>Harmonies</i>	12
<i>Previews</i>	24
<i>Color Blindness Simulation</i>	28
<i>CSS Examples</i>	31

Color

**XYZ(42.0087, 43.4260,
50.9677)**

Conversions

Conversions Part 1

Format	Color
Hex	B1AFB7
RGB	177, 175, 183
RGB Percent	69%, 69%, 72%
CMY	0.3059, 0.3137, 0.2823
CMYK	0.03, 0.04, 0.00, 0.28
HSL	255°, 5%, 70%
HSV	255°, 4%, 72%
XYZ	42.0087, 43.4260, 50.9677
YIQ	176.5100, -1.3760, 2.9120

Conversions

Conversions Part 2

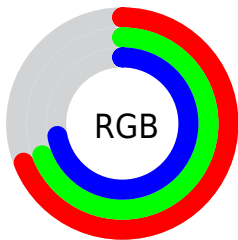
Format	Color
RYB	177, 175, 183
Decimal	11644855
CIELab	71.84, 2.23, -3.84
CIELCh	72, 4.437, 300.174
Yxy	43.4260, 0.3080, 0.3184
Android (android.graphics.Color)	4289834935 (0xFFB1AFB7)
YUV	176.5100, 3.1996, 0.4297
Hunter-Lab	65.8984, -1.5326, 0.2723

Details

The XYZ color **42.0087, 43.4260, 50.9677** is a light color, and the websafe version is hex **999999**. A complement of this color would be **43.7291, 46.7871, 47.2857**, and the grayscale version is **41.5185, 43.6807, 47.5683**.

A 20% lighter version of the original color is **77.4811, 80.1493, 93.0480**, and **19.4244, 20.0627, 23.9678** is the 20% darker color. If you saturate the color by 10%, you get **35.7142, 35.2481, 49.7216**, and if you desaturate by 10%, it is **49.1031, 52.7352, 52.3913**.

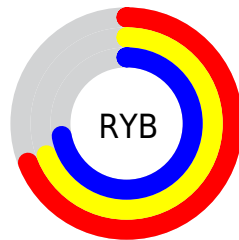
Distribution



Red (69%)

Green (69%)

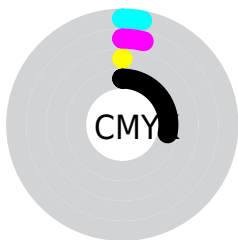
Blue (72%)



Red (69%)

Yellow (69%)

Blue (72%)

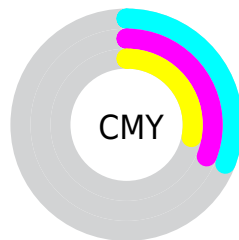


Cyan (3%)

Magenta (4%)

Yellow (0%)

Black (28%)



Cyan (31%)

Magenta (31%)

Yellow (28%)

Brightness & Saturation Gradients

These gradients show how the XYZ color 42.0087, 43.4260, 50.9677 changes by changing the brightness by 10 percent. The first figure shows a shift by +10% for each color and the second figure -10%.

Similar to the brightness gradients but the following saturation gradients show a change of the XYZ color 42.0087, 43.4260, 50.9677 by changing the saturation by 10% instead.

■ 42.0087, 43.4260,
50.9677

■ 42.0087, 43.4260,
50.9677

345.5100,
360.3608, 407.2812

■ 29.2992, 30.2195,
35.8064

■ 77.4779, 80.3533,
93.0180

■ 19.4527, 20.0053,
23.9962

100.9683,
104.8429, 120.7441

■ 12.1038, 12.3989,
15.1186

128.7831,
133.8624, 153.4955

■ 6.8871, 7.0159,
8.7551

161.2876,
167.7960, 191.6908

■ 3.4373, 3.4721,
4.4872

198.8472,
207.0283, 235.7484

■ 1.3890, 1.3829,
1.8962

241.8272,

■ 0.2484, 0.2040,

251.9436, 286.0870

0.4903

290.5931,
302.9263, 343.1251

■ 0.0000, 0.0000,
0.0000

■ 42.0087, 43.4260,
50.9677

■ 42.0087, 43.4260,
50.9677

■ 35.7142, 35.2481,
49.7216

■ 49.1031, 52.7352,
52.3913

■ 30.1873, 28.1526,
48.6434

■ 57.0207, 63.2112,
53.9961

■ 25.3990, 22.0953,
47.7266

■ 65.7886, 74.8946,
55.7891

■ 21.3169, 17.0266,
46.9633

■ 75.4312, 87.8226,
57.7762

■ 17.9063, 12.8930,
46.3452

■ 82.1916, 94.4690,
58.7028

■ 15.1293, 9.6356,
45.8628

■ 85.5474, 96.1989,
58.8598

■ 12.9439, 7.1887,
45.5057

■ 11.3028, 5.4773,
45.2619

■ 10.1501, 4.4112,
45.1169

Harmonies

Analogous

The Analogous color harmony consists of three colors that are next to each other on the color wheel.



41.2795, 43.4260, 51.5619



42.0087, 43.4260, 50.9677



42.5467, 43.4260, 49.3806

Triad

The Triadic color harmony groups three colors that are evenly spaced from another and form a triangle on the color wheel.



42.0087, 43.4260, 50.9677



42.0010, 43.4260, 43.7694



39.8411, 43.4260, 47.2961

Complementary

The Complementary color scheme is a pair of colors which are on the opposite of each other on the color wheel.



42.0087, 43.4260, 50.9677



43.7291, 46.7871, 47.2857

Split Complementary

Split-complementary colors differ from the complementary color scheme. The scheme consists of three colors, the original color and two neighbors of the complement color.



40.0291, 43.4260, 45.2467



42.0087, 43.4260, 50.9677



41.2707, 43.4260, 43.2486

Square

The Square scheme is like the rectangle color scheme, but the four colors are evenly spaced on the color wheel.



42.0087, 43.4260, 50.9677



42.5422, 43.4260, 45.2255



40.5501, 43.4260, 43.7813



40.0334, 43.4260, 49.4031

Rectangle

The Rectangle color scheme consists of four colors that form a rectangle on the color wheel.



42.0087, 43.4260, 50.9677



42.7214, 43.4260, 47.9963



40.5501, 43.4260, 43.7813



39.8619, 43.4260, 46.5779

Sweetspot

The Sweet Spot groups the original color and five complimentary colors.



42.0100, 43.4279, 50.9687



79.3364, 83.1384, 92.1016



42.7789, 45.6362, 51.3544



17.5375, 18.3817, 20.3453



88.6918, 93.3107, 101.6153



17.8044, 18.7317, 20.3988

Same Dimension

The Same Dimension uses a secret algorithm to generate beautiful new colors.



42.0100, 43.4279, 50.9687



74.3878, 76.6674, 91.1133



42.9035, 43.8885, 51.0105



9.2673, 9.5300, 11.4305



6.7935, 2.8134, 31.4381



0.2979, 0.1293, 1.1110

Inverse Universe

The Inverse Universe completely reimagines the original color for something new.



43.2005, 44.0654, 49.9469



76.8580, 77.9905, 88.9871



42.8347, 46.3260, 47.2439



9.6084, 9.7128, 11.1362



16.8170, 8.3006, 17.4550



0.6160, 0.3019, 0.7375

Previews

White Background



This preview shows how the XYZ color 42.0087, 43.4260, 50.9677 looks on a white background.

Color Contrast Check

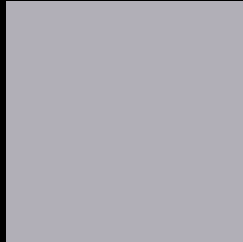
Large Text (above 18pt) WCAG AA × Fail

Any Text WCAG AA × Fail

Large Text (above 18pt) WCAG AAA × Fail

Any Text WCAG AAA × Fail

Black Background



This preview shows how the XYZ color 42.0087, 43.4260, 50.9677 looks on a black background.

Color Contrast Check

Large Text (above 18pt) WCAG AA ✓ Pass

Any Text WCAG AA ✓ Pass

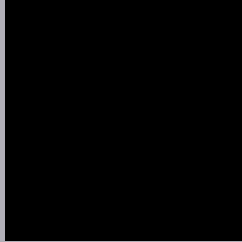
Large Text (above 18pt) WCAG AAA ✓ Pass

Any Text WCAG AAA ✓ Pass

If you want to check with other color combinations, try the [Color Contrast Checker](#).

XYZ 42.0087, 43.4260, 50.9677

Background



This preview shows how black text looks on a background with the XYZ color 42.0087, 43.4260, 50.9677.



This preview shows how white text looks on a background with the XYZ color 42.0087, 43.4260,

Color Blindness Simulation

Color vision deficiency is a very complex topic, and I could not describe the different causes any better than Wikipedia does, so if you want to learn more, you should check out their [article about color blindness](#).

Dichromacy



Original Color

42.0087, 43.4260, 50.9677

Protanopia

42.0087, 43.4260, 50.9677

Deuteranopia

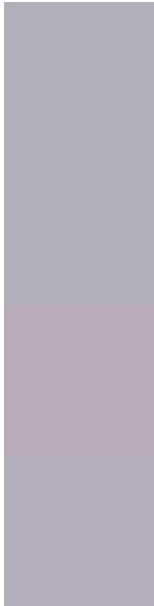
44.2009, 43.4053, 51.3958



Tritanopia

42.5732, 43.3679, 53.7039

Trichromacy



Original Color

42.0087, 43.4260, 50.9677

Protanomaly

42.0087, 43.4260, 50.9677

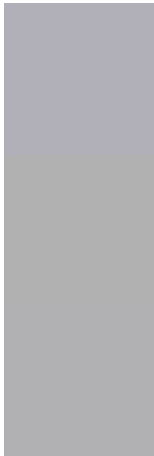
Deuteranomaly

43.4118, 43.2800, 51.4132

Tritanomaly

42.3591, 43.2823, 52.5761

Monochromacy



Original Color

42.0087, 43.4260, 50.9677

Achromatopsia

41.7894, 43.9657, 47.8787

Achromatomaly

41.7935, 43.6525, 48.8708

CSS Examples

Text

The CSS property to change the color of the text to XYZ 42.0087, 43.4260, 50.9677 is called "color". The color property can be set on classes, ids or directly on the HTML element.

This example shows how text in the color `rgb(177, 175, 183)` looks like.

```
.text, #text, p{  
    color:rgb(177, 175, 183)  
}
```

If you want to add a text shadow in that color use the text-shadow property, you can generate a text shadow directly with our [CSS Text Shadow Generator](#).

Here you see how black text with a 4 pixel rgb(177, 175, 183) colored shadow looks like.

```
.shadow{ text-shadow: 4px 4px 2px rgb(177, 175, 183) }
```

Border

The CSS property to change the border of an element to XYZ 42.0087, 43.4260, 50.9677 is called "border". The border property can be set on classes, ids or directly on the HTML element.

This example shows the color as border, it can be applied via the CSS property "border" or "border-color".

```
.border, #border, table{ border:4px solid rgb(177, 175, 183) }
```


If only the border color should be changed use the property `border-color`.

```
.border{ border-color:rgb(177, 175, 183) }
```

If you want to add a box shadow in that color use:

Here you see how a box with a 4 pixel `rgb(177, 175, 183)` colored shadow looks like.

```
.boxshadow{ -moz-box-shadow:4px 4px 4px  
4px rgb(177, 175, 183); -webkit-box-  
shadow:4px 4px 4px 4px rgb(177, 175, 183);  
box-shadow:4px 4px 4px 4px rgb(177, 175,  
183) }
```

Background

The CSS property to change the background color of an element to XYZ 42.0087, 43.4260, 50.9677 is called "background". The background property can be set on classes, ids or directly on the HTML element.

```
.background, #background, body{  
background: rgb(177, 175, 183) }
```

If only the background color should be changed can be used:

```
.background{ background-color: rgb(177,  
175, 183) }
```

This example shows the color as background, it is applied via the CSS property "background".

To optimize and compress your CSS code, you can use our [online CSS compressor and optimizer](#) based on csstidy. If you want to create a linear or radial gradient as background or border, check our [CSS Gradient Generator](#).

Hey! You found this booklet interesting? Support Converting Colors with the new Membership Option!

The pro membership hides all ads, plus gives you double the colors in the color bucket, and more awesome pro features!

[Learn more, Memberships starting at \\$2.50/m!](#)

**Follow me
on Twitter!**

@ConvertingColor