

Converting Colors

XYZ(42.0089, 40.8138, 42.7095)

Have a look what the booklet for
XYZ(42.0089, 40.8138, 42.7095)
contains.

XYZ(42.0089, 40.8138, 42.7095)	3
<i>Conversions</i>	4
<i>Details</i>	6
<i>Harmonies</i>	12
<i>Previews</i>	24
<i>Color Blindness Simulation</i>	28
<i>CSS Examples</i>	31

Color

**XYZ(42.0089, 40.8138,
42.7095)**

Conversions

Conversions Part 1

Format	Color
Hex	BFA5A8
RGB	191, 165, 168
RGB Percent	75%, 65%, 66%
CMY	0.2510, 0.3529, 0.3412
CMYK	0.00, 0.14, 0.12, 0.25
HSL	353°, 17%, 70%
HSV	353°, 14%, 75%
XYZ	42.0089, 40.8138, 42.7095
YIQ	173.1160, 14.5330, 6.4450

Conversions

Conversions Part 2

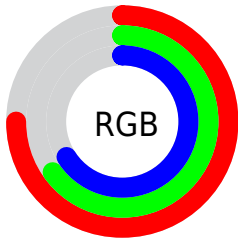
Format	Color
RYB	191, 165, 168
Decimal	12559784
CIELab	70.05, 9.98, 1.95
CIELCh	70, 10.169, 11.058
Yxy	40.8138, 0.3346, 0.3251
Android (android.graphics.Color)	4290749864 (0xFFBFA5A8)
YUV	173.1160, -2.5222, 15.6843
Hunter-Lab	63.8857, 5.5752, 5.0828

Details

The XYZ color **42.0089, 40.8138, 42.7095** is a light color, and the websafe version is hex **CC9999**. A complement of this color would be **43.2266, 48.8929, 54.7384**, and the grayscale version is **39.7879, 41.8599, 45.5855**.

A 20% lighter version of the original color is **77.6239, 76.4706, 80.4811**, and **19.3740, 18.3896, 19.0514** is the 20% darker color. If you saturate the color by 10%, you get **37.3445, 33.8425, 33.8859**, and if you desaturate by 10%, it is **47.3947, 48.8995, 52.7840**.

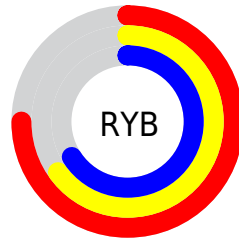
Distribution



Red (75%)

Green (65%)

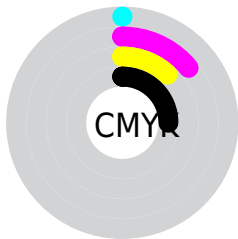
Blue (66%)



Red (75%)

Yellow (65%)

Blue (66%)

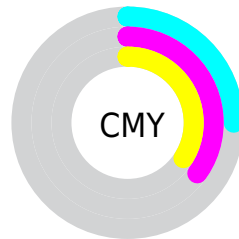


Cyan (0%)

Magenta (14%)

Yellow (12%)

Black (25%)



Cyan (25%)


Magenta (35%)


Yellow (34%)

Brightness & Saturation Gradients

These gradients show how the XYZ color 42.0089, 40.8138, 42.7095 changes by changing the brightness by 10 percent. The first figure shows a shift by +10% for each color and the second figure -10%.


Similar to the brightness gradients but the following saturation gradients show a change of the XYZ color 42.0089, 40.8138, 42.7095 by changing the saturation by 10% instead.


 42.0089, 40.8138,
42.7095


 42.0089, 40.8138,
42.7095


345.5108,
349.5418, 373.3018

 29.2994, 28.1736,
29.3275

 77.4782, 76.4012,
80.5539

 19.4528, 18.4566,
19.0810


 100.9687,
100.1171, 105.8535

 12.1039, 11.2783,
11.5514


128.7835,
128.2938, 135.9627

 6.8872, 6.2543,
6.3202

161.2881,
161.3156, 171.3000

 3.4373, 3.0003,
2.9688

198.8478,
199.5669, 212.2841

 1.3890, 1.1319,
1.0787

241.8279,

 0.2484, 0.0050,

243.4321, 259.3334

0.0000

290.5938,
293.2956, 312.8664

■ 0.0000, 0.0000,
0.0000

■ 42.0089, 40.8138,
42.7095

■ 42.0089, 40.8138,
42.7095

■ 37.3445, 33.8425,
33.8859

■ 47.3947, 48.8995,
52.7840

■ 33.3676, 27.9317,
26.2617

■ 53.5272, 58.1399,
64.1528

■ 30.0464, 23.0309,
19.7858

■ 60.4347, 68.5797,
76.8606

■ 27.3456, 19.0836,
14.4024

■ 68.1429, 80.2597,
90.9490

■ 25.2264, 16.0274,
10.0510

■ 74.8951, 89.6561,
105.8641

■ 23.6455, 13.7930,
6.6651

■ 75.2961, 89.8165,
107.9755

■ 22.5536, 12.3002,
4.1706

■ 21.8919, 11.4532,
2.4820

■ 21.6311, 11.1345,
1.7689

Harmonies

Analogous

The Analogous color harmony consists of three colors that are next to each other on the color wheel.



41.8893, 40.8138, 47.4722



42.0089, 40.8138, 42.7095



41.2484, 40.8138, 38.7032

Triad

The Triadic color harmony groups three colors that are evenly spaced from another and form a triangle on the color wheel.



42.0089, 40.8138, 42.7095



36.7340, 40.8138, 37.8986



37.7657, 40.8138, 53.6552

Complementary

The Complementary color scheme is a pair of colors which are on the opposite of each other on the color wheel.



42.0089, 40.8138, 42.7095



43.2266, 48.8929, 54.7384

Split Complementary

Split-complementary colors differ from the complementary color scheme. The scheme consists of three colors, the original color and two neighbors of the complement color.



36.4357, 40.8138, 50.7158



42.0089, 40.8138, 42.7095



35.8519, 40.8138, 41.5384

Square

The Square scheme is like the rectangle color scheme, but the four colors are evenly spaced on the color wheel.



42.0089, 40.8138, 42.7095



38.1835, 40.8138, 36.0605



35.7442, 40.8138, 46.2152



39.4075, 40.8138, 54.0248

Rectangle

The Rectangle color scheme consists of four colors that form a rectangle on the color wheel.



42.0089, 40.8138, 42.7095



40.3570, 40.8138, 36.9124



35.7442, 40.8138, 46.2152



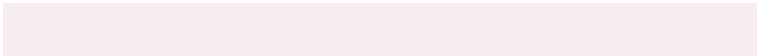
37.2686, 40.8138, 52.9256

Sweetspot

The Sweet Spot groups the original color and five complimentary colors.



42.0100, 40.8156, 42.7104



84.4181, 86.8788, 93.6691



43.5912, 41.3609, 54.9767



18.3668, 18.8212, 20.2510



92.9021, 97.7402, 106.4391



19.4759, 20.4902, 22.3138

Same Dimension

The Same Dimension uses a secret algorithm to generate beautiful new colors.



42.0100, 40.8156, 42.7104



72.9082, 69.6099, 72.1030



43.6021, 44.4415, 41.8795



9.5737, 9.5538, 10.1441



14.2313, 7.3237, 1.2454



0.5724, 0.2929, 0.1276

Inverse Universe

The Inverse Universe completely reimagines the original color for something new.



42.0100, 40.8156, 42.7104



72.9082, 69.6099, 72.1030



41.4532, 44.8237, 55.7578



9.5737, 9.5538, 10.1441



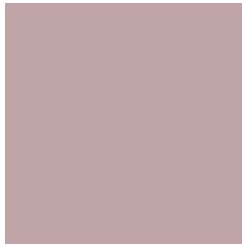
14.2313, 7.3237, 1.2454



0.5724, 0.2929, 0.1276

Previews

White Background



This preview shows how the XYZ color 42.0089, 40.8138, 42.7095 looks on a white background.

Color Contrast Check

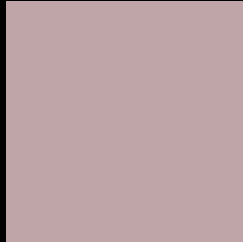
Large Text (above 18pt) WCAG AA × Fail

Any Text WCAG AA × Fail

Large Text (above 18pt) WCAG AAA × Fail

Any Text WCAG AAA × Fail

Black Background



This preview shows how the XYZ color 42.0089, 40.8138, 42.7095 looks on a black background.

Color Contrast Check

Large Text (above 18pt) WCAG AA ✓ Pass

Any Text WCAG AA ✓ Pass

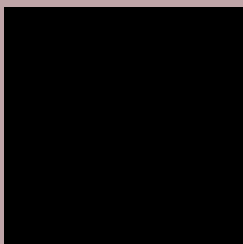
Large Text (above 18pt) WCAG AAA ✓ Pass

Any Text WCAG AAA ✓ Pass

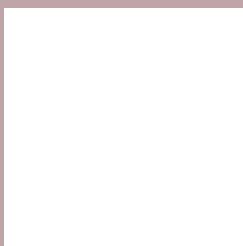
If you want to check with other color combinations, try the [Color Contrast Checker](#).

XYZ 42.0089, 40.8138, 42.7095

Background



This preview shows how black text looks on a background with the XYZ color 42.0089, 40.8138, 42.7095.



This preview shows how white text looks on a background with the XYZ color 42.0089, 40.8138,

Color Blindness Simulation

Color vision deficiency is a very complex topic, and I could not describe the different causes any better than Wikipedia does, so if you want to learn more, you should check out their [article about color blindness](#).

Dichromacy



Original Color

42.0089, 40.8138, 42.7095

Protanopia

39.3692, 41.0648, 44.3794

Deuteranopia

41.6904, 40.9184, 42.7465



Tritanopia

42.8502, 40.8920, 46.7088

Trichromacy



Original Color

42.0089, 40.8138, 42.7095

Protanomaly

40.2661, 40.9815, 43.8182

Deuteranomaly

41.9393, 41.0467, 42.7582

Tritanomaly

42.5565, 40.7745, 45.1625

Monochromacy



Original Color

42.0089, 40.8138, 42.7095

Achromatopsia

39.7200, 41.7885, 45.5077

Achromatomaly

40.5478, 41.3930, 44.3806

CSS Examples

Text

The CSS property to change the color of the text to XYZ 42.0089, 40.8138, 42.7095 is called "color". The color property can be set on classes, ids or directly on the HTML element.

This example shows how text in the color `rgb(191, 165, 168)` looks like.

```
.text, #text, p{  
    color:rgb(191, 165, 168)  
}
```

If you want to add a text shadow in that color use the text-shadow property, you can generate a text shadow directly with our [CSS Text Shadow Generator](#).

Here you see how black text with a 4 pixel rgb(191, 165, 168) colored shadow looks like.

```
.shadow{ text-shadow: 4px 4px 2px rgb(191, 165, 168) }
```

Border

The CSS property to change the border of an element to XYZ 42.0089, 40.8138, 42.7095 is called "border". The border property can be set on classes, ids or directly on the HTML element.

This example shows the color as border, it can be applied via the CSS property "border" or "border-color".

```
.border, #border, table{ border:4px solid rgb(191, 165, 168) }
```


If only the border color should be changed use the property `border-color`.

```
.border{ border-color:rgb(191, 165, 168) }
```

If you want to add a box shadow in that color use:

Here you see how a box with a 4 pixel `rgb(191, 165, 168)` colored shadow looks like.

```
.boxshadow{ -moz-box-shadow:4px 4px 4px  
4px rgb(191, 165, 168); -webkit-box-  
shadow:4px 4px 4px 4px rgb(191, 165, 168);  
box-shadow:4px 4px 4px 4px rgb(191, 165,  
168) }
```

Background

The CSS property to change the background color of an element to XYZ 42.0089, 40.8138, 42.7095 is called "background". The background property can be set on classes, ids or directly on the HTML element.

```
.background, #background, body{  
background: rgb(191, 165, 168) }
```

If only the background color should be changed can be used:

```
.background{ background-color: rgb(191,  
165, 168) }
```

This example shows the color as background, it is applied via the CSS property "background".

To optimize and compress your CSS code, you can use our [online CSS compressor and optimizer](#) based on csstidy. If you want to create a linear or radial gradient as background or border, check our [CSS Gradient Generator](#).

Hey! You found this booklet interesting? Support Converting Colors with the new Membership Option!

The pro membership hides all ads, plus gives you double the colors in the color bucket, and more awesome pro features!

[Learn more, Memberships starting at \\$2.50/m!](#)

**Follow me
on Twitter!**

@ConvertingColor