

# Converting Colors

XYZ(42.0470, 42.8783, 35.7821)

Have a look what the booklet for  
XYZ(42.0470, 42.8783, 35.7821)  
contains.

|  |    |
|--|----|
| <b>XYZ(42.1582, 42.9785, 35.7795)</b> .....    | 3  |
| <b><i>Conversions</i></b> .....                | 4  |
| <b><i>Details</i></b> .....                    | 6  |
| <b><i>Harmonies</i></b> .....                  | 12 |
| <b><i>Previews</i></b> .....                   | 24 |
| <b><i>Color Blindness Simulation</i></b> ..... | 28 |
| <b><i>CSS Examples</i></b> .....               | 31 |

# Color

**XYZ(42.1582, 42.9785,  
35.7795)**

# Conversions

## Conversions Part 1

| <b>Format</b> | <b>Color</b>               |
|---------------|----------------------------|
| Hex           | C0AC98                     |
| RGB           | 192, 172, 152              |
| RGB Percent   | 75%, 67%, 60%              |
| CMY           | 0.2471, 0.3255, 0.4039     |
| CMYK          | 0.00, 0.10, 0.21, 0.25     |
| HSL           | 30°, 24%, 67%              |
| HSV           | 30°, 21%, 75%              |
| XYZ           | 42.1582, 42.9785, 35.7795  |
| YIQ           | 175.7000, 18.3400, -1.9800 |

# Conversions

## Conversions Part 2

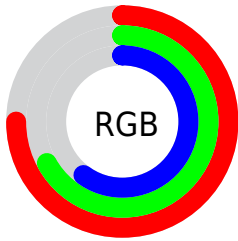
| Format                              | Color                          |
|-------------------------------------|--------------------------------|
| R <sub>Y</sub> B                    | 192, 192, 152                  |
| Decimal                             | 12627096                       |
| CIE Lab                             | 71.54, 3.99, 12.92             |
| CIE LCh                             | 72, 13.519, 72.851             |
| Yxy                                 | 42.9785, 0.3487,<br>0.3554     |
| Android<br>(android.graphics.Color) | 4290817176<br>(0xFFC0AC98)     |
| YUV                                 | 175.7000, -11.6841,<br>14.2951 |
| Hunter-Lab                          | 65.5580, 0.0610,<br>13.5320    |

# Details

The XYZ color **42.1582, 42.9785, 35.7795** is a light color, and the websafe version is hex **999999**. A complement of this color would be **37.2155, 39.9852, 55.6257**, and the grayscale version is **41.1637, 43.3075, 47.1618**.

A 20% lighter version of the original color is **77.6766, 79.5341, 69.6501**, and **19.5467, 19.7758, 15.0988** is the 20% darker color. If you saturate the color by 10%, you get **38.9503, 38.8787, 27.5699**, and if you desaturate by 10%, it is **45.7549, 47.4479, 45.3757**.

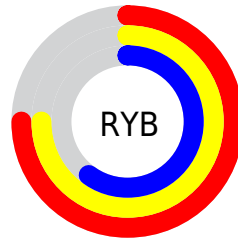
# Distribution



Red (75%)

Green (67%)

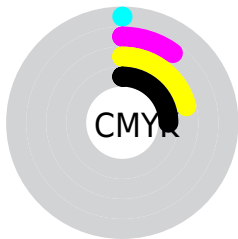
Blue (60%)



Red (75%)

Yellow (75%)

Blue (60%)

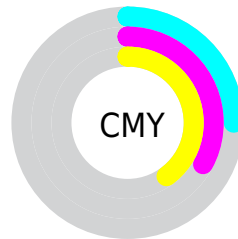


Cyan (0%)

Magenta (10%)

Yellow (21%)

Black (25%)



Cyan (25%)

Magenta (33%)

Yellow (40%)


# Brightness & Saturation Gradients

These gradients show how the XYZ color 42.1582, 42.9785, 35.7795 changes by changing the brightness by 10 percent. The first figure shows a shift by +10% for each color and the second figure -10%.


Similar to the brightness gradients but the following saturation gradients show a change of the XYZ color 42.1582, 42.9785, 35.7795 by changing the saturation by 10% instead.





 42.1582, 42.9785,  
35.7795


 42.1582, 42.9785,  
35.7795


346.1188,  
358.5233, 343.0040

 29.4168, 29.8682,  
23.9756


 77.7027, 79.6784,  
69.8568

 19.5422, 19.7386,  
15.1035

 101.2365,  
104.0369, 92.9673

 12.1691, 12.2052,  
8.7446

129.0985,  
132.9135, 120.6837

 6.9319, 6.8836,  
4.4805

161.6540,  
166.6927, 153.4246

 3.4655, 3.3894,  
1.8924

199.2685,  
205.7589, 191.6086

 1.4045, 1.3382,  
0.4879

242.3072,

 0.2594, 0.1705,

250.4965, 235.6541

0.0000

291.1355,  
301.2898, 285.9797

■ 0.0000, 0.0000,  
0.0000

■ 42.1582, 42.9785,  
35.7795

■ 42.1582, 42.9785,  
35.7795

■ 38.9503, 38.8787,  
27.5699

■ 45.7549, 47.4479,  
45.3757

■ 36.1128, 35.1322,  
20.6787

■ 49.7512, 52.2911,  
56.4166

■ 33.6308, 31.7301,  
15.0363

■ 54.1614, 57.5195,  
68.9606

■ 31.4868, 28.6605,  
10.5653

■ 58.9982, 63.1421,  
83.0617

■ 29.6616, 25.9109,  
7.1795

■ 64.2738, 69.1678,  
98.7713

■ 28.1335, 23.4676,  
4.7809

■ 67.9721, 74.7941,  
105.4619

■ 26.8773, 21.3150,  
3.2529

■ 70.7109, 80.2717,  
106.3749

■ 25.9229, 19.5758,  
2.4122

■ 73.5990, 86.0478,  
107.3376

■ 75.5483, 89.9465,  
107.9873

# Harmonies

## Analogous

The Analogous color harmony consists of three colors that are next to each other on the color wheel.



44.1541, 42.9785, 38.7546



42.1582, 42.9785, 35.7795



39.8810, 42.9785, 35.5758

# Triad

The Triadic color harmony groups three colors that are evenly spaced from another and form a triangle on the color wheel.



42.1582, 42.9785, 35.7795



36.7167, 42.9785, 49.6492



43.9093, 42.9785, 56.6340

# Complementary

The Complementary color scheme is a pair of colors which are on the opposite of each other on the color wheel.



42.1582, 42.9785, 35.7795



37.2155, 39.9852, 55.6257

# Split Complementary

Split-complementary colors differ from the complementary color scheme. The scheme consists of three colors, the original color and two neighbors of the complement color.



41.8341, 42.9785, 60.1581



42.1582, 42.9785, 35.7795



37.7145, 42.9785, 55.8799

# Square

The Square scheme is like the rectangle color scheme, but the four colors are evenly spaced on the color wheel.



42.1582, 42.9785, 35.7795



36.7962, 42.9785, 43.1854



39.5687, 42.9785, 59.8699



45.1907, 42.9785, 50.6030



# Rectangle

The Rectangle color scheme consists of four colors that form a rectangle on the color wheel.



42.1582, 42.9785, 35.7795



38.5140, 42.9785, 37.0072



39.5687, 42.9785, 59.8699



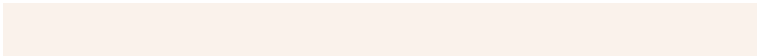
43.2782, 42.9785, 58.1752

# Sweetspot

The Sweet Spot groups the original color and five complimentary colors.



42.1593, 42.9804, 35.7804



86.2430, 90.0436, 91.3607



40.4132, 36.6420, 43.9728



18.4005, 19.1942, 19.3202



92.9021, 97.7402, 106.4391



19.4759, 20.4902, 22.3138

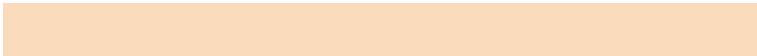


# Same Dimension

The Same Dimension uses a secret algorithm to generate beautiful new colors.



42.1593, 42.9804, 35.7804



73.6489, 74.4020, 57.7319



46.2556, 51.1729, 37.1458



10.4800, 10.8914, 10.6118



17.5212, 13.3282, 1.6491



0.8260, 0.7138, 0.0942



# Inverse Universe

The Inverse Universe completely reimagines the original color for something new.



37.2155, 39.9852, 55.6257



63.0792, 67.9982, 100.1606



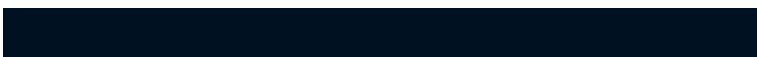
33.6921, 32.9383, 54.4513



9.9350, 10.5612, 12.7997



9.2935, 8.3435, 34.6773

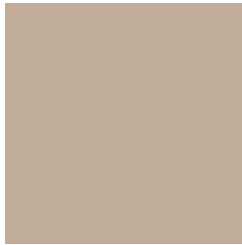


0.4705, 0.4984, 1.5213



# Previews

## White Background



This preview shows how the XYZ color 42.1582, 42.9785, 35.7795 looks on a white background.

## Color Contrast Check

Large Text (above 18pt) WCAG AA × Fail

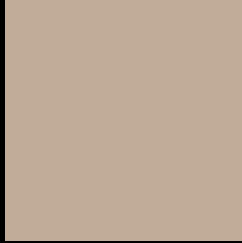
Any Text WCAG AA × Fail

Large Text (above 18pt) WCAG AAA × Fail

Any Text WCAG AAA × Fail



# Black Background



This preview shows how the XYZ color 42.1582, 42.9785, 35.7795 looks on a black background.

## Color Contrast Check

Large Text (above 18pt) WCAG AA ✓ Pass

Any Text WCAG AA ✓ Pass

Large Text (above 18pt) WCAG AAA ✓ Pass

Any Text WCAG AAA ✓ Pass

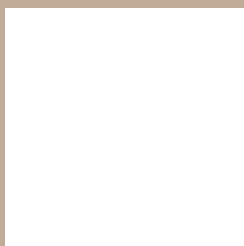
If you want to check with other color combinations, try the [Color Contrast Checker](#).

**XYZ 42.1582, 42.9785, 35.7795**

## **Background**



This preview shows how black text looks on a background with the XYZ color 42.1582, 42.9785, 35.7795.



This preview shows how white text looks on a background with the XYZ color 42.1582, 42.9785,

35.7795.

# Color Blindness Simulation

Color vision deficiency is a very complex topic, and I could not describe the different causes any better than Wikipedia does, so if you want to learn more, you should check out their [article about color blindness](#).

## Dichromacy



### Original Color

42.1582, 42.9785, 35.7795

### Protanopia

40.8469, 43.1502, 36.3129

### Deuteranopia

43.7572, 42.9552, 36.1219



## Tritanopia

45.1081, 43.0772, 49.6533

# Trichromacy



## Original Color

42.1582, 42.9785, 35.7795

## Protanomaly

41.3793, 43.1368, 36.2823

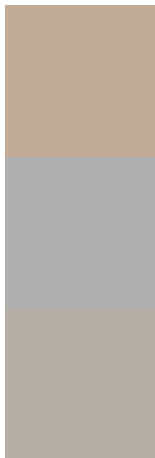
## Deuteranomaly

43.1505, 42.9197, 36.1470

## Tritanomaly

43.9493, 42.8803, 43.9906

# Monochromacy



## Original Color

42.1582, 42.9785, 35.7795

## Achromatopsia

41.2663, 43.4154, 47.2793

## Achromatomaly

41.5964, 43.3950, 42.7429

# CSS Examples

## Text

The CSS property to change the color of the text to XYZ 42.1582, 42.9785, 35.7795 is called "color". The color property can be set on classes, ids or directly on the HTML element.

This example shows how text in the color `rgb(192, 172, 152)` looks like.

```
.text, #text, p{  
    color:rgb(192, 172, 152)  
}
```

If you want to add a text shadow in that color use the text-shadow property, you can generate a text shadow directly with our [CSS Text Shadow Generator](#).

Here you see how black text with a 4 pixel rgb(192, 172, 152) colored shadow looks like.

```
.shadow{ text-shadow: 4px 4px 2px rgb(192, 172, 152) }
```

## Border

The CSS property to change the border of an element to XYZ 42.1582, 42.9785, 35.7795 is called "border". The border property can be set on classes, ids or directly on the HTML element.

This example shows the color as border, it can be applied via the CSS property "border" or "border-color".

```
.border, #border, table{ border:4px solid rgb(192, 172, 152) }
```



If only the border color should be changed use the property `border-color`.

```
.border{ border-color:rgb(192, 172, 152) }
```

If you want to add a box shadow in that color use:

Here you see how a box with a 4 pixel `rgb(192, 172, 152)` colored shadow looks like.

```
.boxshadow{ -moz-box-shadow:4px 4px 4px  
4px rgb(192, 172, 152); -webkit-box-  
shadow:4px 4px 4px 4px rgb(192, 172, 152);  
box-shadow:4px 4px 4px 4px rgb(192, 172,  
152) }
```

# Background

The CSS property to change the background color of an element to XYZ 42.1582, 42.9785, 35.7795 is called "background". The background property can be set on classes, ids or directly on the HTML element.

```
.background, #background, body{  
background: rgb(192, 172, 152) }
```

If only the background color should be changed can be used:

```
.background{ background-color: rgb(192,  
172, 152) }
```

This example shows the color as background, it is applied via the CSS property "background".

To optimize and compress your CSS code, you can use our [online CSS compressor and optimizer](#) based on csstidy. If you want to create a linear or radial gradient as background or border, check our [CSS Gradient Generator](#).

Hey! You found this booklet interesting? Support Converting Colors with the new Membership Option!

The pro membership hides all ads, plus gives you double the colors in the color bucket, and more awesome pro features!

**[Learn more, Memberships starting at \\$2.50/m!](#)**

**Follow me  
on Twitter!**

@ConvertingColor