

Converting Colors

XYZ(42.0849, 41.9017, 43.3532)

Have a look what the booklet for
XYZ(42.0849, 41.9017, 43.3532)
contains.

XYZ(42.0884, 41.9319, 43.4115)	3
<i>Conversions</i>	4
<i>Details</i>	6
<i>Harmonies</i>	12
<i>Previews</i>	24
<i>Color Blindness Simulation</i>	28
<i>CSS Examples</i>	31

Color

**XYZ(42.0884, 41.9319,
43.4115)**

Conversions

Conversions Part 1

Format	Color
Hex	BCA9A9
RGB	188, 169, 169
RGB Percent	74%, 66%, 66%
CMY	0.2627, 0.3372, 0.3373
CMYK	0.00, 0.10, 0.10, 0.26
HSL	0°, 12%, 70%
HSV	0°, 10%, 74%
XYZ	42.0884, 41.9319, 43.4115
YIQ	174.6810, 11.3240, 4.0280

Conversions

Conversions Part 2

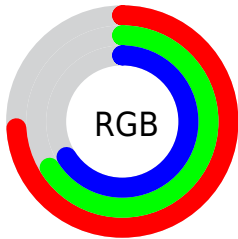
Format	Color
R_{YB}	188, 169, 169
Decimal	12364201
CIE _{Lab}	70.82, 6.86, 2.50
CIE _{LCh}	71, 7.303, 19.977
Yxy	41.9319, 0.3303, 0.3291
Android (android.graphics.Color)	4290554281 (0xFFBCA9A9)
YUV	174.6810, -2.8007, 11.6808
Hunter-Lab	64.7548, 2.6978, 5.5805

Details

The XYZ color **42.0884, 41.9319, 43.4115** is a light color, and the websafe version is hex **999999**. A complement of this color would be **43.4222, 48.0312, 54.5596**, and the grayscale version is **40.5936, 42.7076, 46.5086**.

A 20% lighter version of the original color is **77.4184, 77.9262, 81.4819**, and **19.5638, 19.1578, 19.4963** is the 20% darker color. If you saturate the color by 10%, you get **37.2000, 34.7791, 33.6916**, and if you desaturate by 10%, it is **47.7357, 50.1953, 54.6375**.

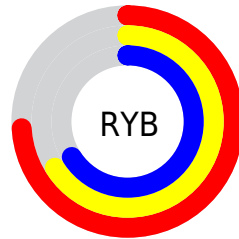
Distribution



Red (74%)

Green (66%)

Blue (66%)



Red (74%)

Yellow (66%)

Blue (66%)

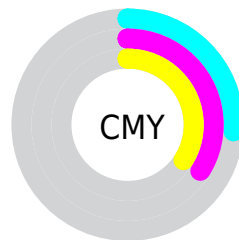


Cyan (0%)

Magenta (10%)

Yellow (10%)

Black (26%)



Cyan (26%)


Magenta (34%)


Yellow (34%)

Brightness & Saturation Gradients


These gradients show how the XYZ color 42.0884, 41.9319, 43.4115 changes by changing the brightness by 10 percent. The first figure shows a shift by +10% for each color and the second figure -10%.

Similar to the brightness gradients but the following saturation gradients show a change of the XYZ color 42.0884, 41.9319, 43.4115 by changing the saturation by 10% instead.

 42.0884, 41.9319,
43.4115


 42.0884, 41.9319,
43.4115


345.8347,
354.2006, 376.2722

 29.3619, 29.0480,
29.8743


 77.5977, 78.0965,
81.6245

 19.5004, 19.1171,
19.4920


 101.1113,
102.1461, 107.1373

 12.1386, 11.7549,
11.8459


128.9513,
130.6862, 137.4792

 6.9110, 6.5770,
6.5176

161.4830,
164.1014, 173.0686

 3.4523, 3.1990,
3.0884

199.0718,
202.7761, 214.3240

 1.3972, 1.2365,
1.1400

242.0832,

 0.2543, 0.0912,

247.0945, 261.6641

0.0000

290.8823,
297.4412, 315.5073

■ 0.0000, 0.0000,
0.0000

■ 42.0884, 41.9319,
43.4115

■ 42.0884, 41.9319,
43.4115

■ 37.2000, 34.7791,
33.6916

■ 47.7357, 50.1953,
54.6375

■ 33.0348, 28.6844,
25.4111

■ 54.1685, 59.6080,
67.4268

■ 29.5596, 23.5992,
18.5024

■ 61.4166, 70.2136,
81.8372

■ 26.7372, 19.4691,
12.8916

■ 69.5072, 82.0518,
97.9226

■ 24.5268, 16.2345,
8.4977

■ 74.5492, 89.4314,
107.9406

■ 22.8830, 13.8291,
5.2304

■ 21.7544, 12.1775,
2.9874

■ 21.0800, 11.1905,
1.6473

■ 20.7395, 10.6922,
0.9707

Harmonies

Analogous

The Analogous color harmony consists of three colors that are next to each other on the color wheel.



42.1972, 41.9319, 46.8296



42.0884, 41.9319, 43.4115



41.3745, 41.9319, 40.7282

Triad

The Triadic color harmony groups three colors that are evenly spaced from another and form a triangle on the color wheel.



42.0884, 41.9319, 43.4115



38.0947, 41.9319, 41.4927



39.4503, 41.9319, 52.5584

Complementary

The Complementary color scheme is a pair of colors which are on the opposite of each other on the color wheel.



42.0884, 41.9319, 43.4115



43.4222, 48.0312, 54.5596

Split Complementary

Split-complementary colors differ from the complementary color scheme. The scheme consists of three colors, the original color and two neighbors of the complement color.



38.3732, 41.9319, 50.9676



42.0884, 41.9319, 43.4115



37.6012, 41.9319, 44.5036

Square

The Square scheme is like the rectangle color scheme, but the four colors are evenly spaced on the color wheel.



42.0884, 41.9319, 43.4115



39.0631, 41.9319, 39.6599



37.7021, 41.9319, 47.9780



40.6575, 41.9319, 52.2294

Rectangle

The Rectangle color scheme consists of four colors that form a rectangle on the color wheel.



42.0884, 41.9319, 43.4115



40.6593, 41.9319, 39.6616



37.7021, 41.9319, 47.9780



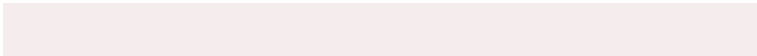
39.0614, 41.9319, 52.2275

Sweetspot

The Sweet Spot groups the original color and five complimentary colors.



42.0896, 41.9338, 43.4124



83.3560, 86.3512, 92.7446



44.0045, 42.6987, 53.4997



17.7437, 18.3036, 19.5832



90.7827, 95.5105, 104.0109



18.6292, 19.5994, 21.3438

Same Dimension

The Same Dimension uses a secret algorithm to generate beautiful new colors.



42.0896, 41.9338, 43.4124



74.3167, 73.1245, 74.7735



43.9210, 45.5965, 44.0229



9.5303, 9.5367, 9.9151



14.1205, 7.2799, 0.6609



0.5532, 0.2853, 0.0259

Inverse Universe

The Inverse Universe completely reimagines the original color for something new.



43.4222, 48.0312, 54.5596



77.1902, 86.2723, 98.8101



41.4599, 44.1065, 53.9055



9.8085, 10.8093, 12.2416



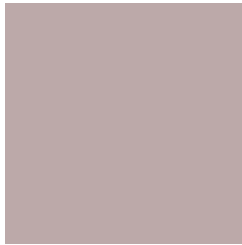
18.4191, 26.9500, 36.6240



0.7215, 1.0558, 1.4346

Previews

White Background



This preview shows how the XYZ color 42.0884, 41.9319, 43.4115 looks on a white background.

Color Contrast Check

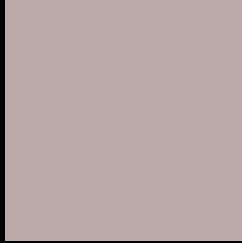
Large Text (above 18pt) WCAG AA × Fail

Any Text WCAG AA × Fail

Large Text (above 18pt) WCAG AAA × Fail

Any Text WCAG AAA × Fail

Black Background



This preview shows how the XYZ color 42.0884, 41.9319, 43.4115 looks on a black background.

Color Contrast Check

Large Text (above 18pt) WCAG AA ✓ Pass

Any Text WCAG AA ✓ Pass

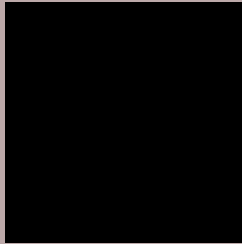
Large Text (above 18pt) WCAG AAA ✓ Pass

Any Text WCAG AAA ✓ Pass

If you want to check with other color combinations, try the [Color Contrast Checker](#).

XYZ 42.0884, 41.9319, 43.4115

Background



This preview shows how black text looks on a background with the XYZ color 42.0884, 41.9319, 43.4115.



This preview shows how white text looks on a background with the XYZ color 42.0884, 41.9319,

Color Blindness Simulation

Color vision deficiency is a very complex topic, and I could not describe the different causes any better than Wikipedia does, so if you want to learn more, you should check out their [article about color blindness](#).

Dichromacy



Original Color

42.0884, 41.9319, 43.4115

Protanopia

40.4257, 42.1745, 44.5379

Deuteranopia

42.9023, 42.0763, 43.3965



Tritanopia

43.2921, 41.8799, 48.9819

Trichromacy



Original Color

42.0884, 41.9319, 43.4115

Protanomaly

41.0643, 42.2311, 44.0173

Deuteranomaly

42.6499, 41.9462, 43.3847

Tritanomaly

42.8254, 41.9587, 46.9160

Monochromacy



Original Color

42.0884, 41.9319, 43.4115

Achromatopsia

40.7470, 42.8690, 46.6844

Achromatomaly

41.3088, 42.6076, 45.5820

CSS Examples

Text

The CSS property to change the color of the text to XYZ 42.0884, 41.9319, 43.4115 is called "color". The color property can be set on classes, ids or directly on the HTML element.

This example shows how text in the color `rgb(188, 169, 169)` looks like.

```
.text, #text, p{  
    color:rgb(188, 169, 169)  
}
```

If you want to add a text shadow in that color use the text-shadow property, you can generate a text shadow directly with our [CSS Text Shadow Generator](#).

Here you see how black text with a 4 pixel rgb(188, 169, 169) colored shadow looks like.

```
.shadow{ text-shadow: 4px 4px 2px rgb(188, 169, 169) }
```

Border

The CSS property to change the border of an element to XYZ 42.0884, 41.9319, 43.4115 is called "border". The border property can be set on classes, ids or directly on the HTML element.

This example shows the color as border, it can be applied via the CSS property "border" or "border-color".

```
.border, #border, table{ border:4px solid rgb(188, 169, 169) }
```


If only the border color should be changed use the property `border-color`.

```
.border{ border-color:rgb(188, 169, 169) }
```

If you want to add a box shadow in that color use:

Here you see how a box with a 4 pixel `rgb(188, 169, 169)` colored shadow looks like.

```
.boxshadow{ -moz-box-shadow:4px 4px 4px  
4px rgb(188, 169, 169); -webkit-box-  
shadow:4px 4px 4px 4px rgb(188, 169, 169);  
box-shadow:4px 4px 4px 4px rgb(188, 169,  
169) }
```

Background

The CSS property to change the background color of an element to XYZ 42.0884, 41.9319, 43.4115 is called "background". The background property can be set on classes, ids or directly on the HTML element.

```
.background, #background, body{  
background: rgb(188, 169, 169) }
```

If only the background color should be changed can be used:

```
.background{ background-color: rgb(188,  
169, 169) }
```

This example shows the color as background, it is applied via the CSS property "background".

To optimize and compress your CSS code, you can use our [online CSS compressor and optimizer](#) based on csstidy. If you want to create a linear or radial gradient as background or border, check our [CSS Gradient Generator](#).

Hey! You found this booklet interesting? Support Converting Colors with the new Membership Option!

The pro membership hides all ads, plus gives you double the colors in the color bucket, and more awesome pro features!

[Learn more, Memberships starting at \\$2.50/m!](#)

**Follow me
on Twitter!**

@ConvertingColor