

Converting Colors

XYZ(42.1381, 31.5390, 27.1533)

Have a look what the booklet for
XYZ(42.1381, 31.5390, 27.1533)
contains.

XYZ(42.1439, 31.5439, 27.1599)	3
<i>Conversions</i>	4
<i>Details</i>	6
<i>Harmonies</i>	12
<i>Previews</i>	24
<i>Color Blindness Simulation</i>	28
<i>CSS Examples</i>	31

Color

**XYZ(42.1439, 31.5439,
27.1599)**

Conversions

Conversions Part 1

Format	Color
Hex	E07A88
RGB	224, 122, 136
RGB Percent	88%, 48%, 53%
CMY	0.1216, 0.5215, 0.4667
CMYK	0.00, 0.46, 0.39, 0.12
HSL	352°, 62%, 68%
HSV	352°, 46%, 88%
XYZ	42.1439, 31.5439, 27.1599
YIQ	154.0940, 56.2980, 25.9780

Conversions

Conversions Part 2

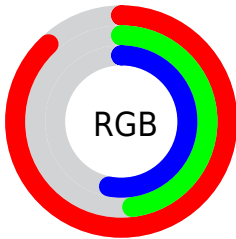
Format	Color
RYB	224, 122, 136
Decimal	14711432
CIELab	62.96, 40.91, 10.25
CIELCh	63, 42.174, 14.062
Yxy	31.5439, 0.4179, 0.3128
Android (android.graphics.Color)	4292901512 (0xFFE07A88)
YUV	154.0940, -8.9203, 61.3076
Hunter-Lab	56.1640, 35.6546, 10.6432

Details

The XYZ color **42.1439, 31.5439, 27.1599** is a light color, and the websafe version is hex **CC6666**. A complement of this color would be **46.3161, 62.1027, 70.5221**, and the grayscale version is **30.7779, 32.3807, 35.2626**.

A 20% lighter version of the original color is **65.9506, 55.9848, 55.4743**, and **19.5958, 13.1592, 10.3113** is the 20% darker color. If you saturate the color by 10%, you get **38.4517, 26.1630, 19.7528**, and if you desaturate by 10%, it is **46.7193, 38.2947, 36.0839**.

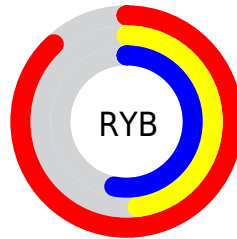
Distribution



Red (88%)

Green (48%)

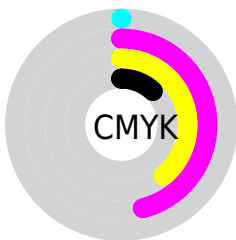
Blue (53%)



Red (88%)

Yellow (48%)

Blue (53%)

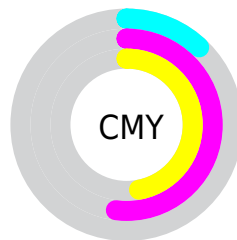


Cyan (0%)

Magenta (46%)

Yellow (39%)

Black (12%)



Cyan (12%)

Magenta (52%)

Yellow (47%)

Brightness & Saturation Gradients

These gradients show how the XYZ color 42.1439, 31.5439, 27.1599 changes by changing the brightness by 10 percent. The first figure shows a shift by +10% for each color and the second figure -10%.

Similar to the brightness gradients but the following saturation gradients show a change of the XYZ color 42.1439, 31.5439, 27.1599 by changing the saturation by 10% instead.

■ 42.1439, 31.5439,
27.1599

■ 42.1439, 31.5439,
27.1599

346.0606,
309.0363, 302.2151

■ 29.4056, 21.0134,
17.4598

■ 77.6812, 62.0954,
56.1472

■ 19.5337, 13.1338,
10.3975

■ 101.2108, 82.8851,
76.2715

■ 12.1628, 7.5207,
5.5543

■ 129.0683,
107.8634, 100.7077

■ 6.9276, 3.7898,
2.5116

161.6190,
137.4145, 129.8743

■ 3.4628, 1.5567,
0.8463

199.2282,
171.9230, 164.1897

■ 1.4030, 0.3281,
0.0000

242.2613,

■ 0.2583, 0.0000,

211.7732, 204.0727

0.0000

291.0836,
257.3495, 249.9416

■ 0.0000, 0.0000,
0.0000

■ 42.1439, 31.5439,
27.1599

■ 42.1439, 31.5439,
27.1599

■ 38.4517, 26.1630,
19.7528

■ 46.7193, 38.2947,
36.0839

■ 35.5827, 22.0535,
13.7758

■ 52.2276, 46.4953,
46.6012

■ 33.4733, 19.1117,
9.1364


■ 58.7178, 56.2254,
58.7852

■ 32.0495, 17.2149,
5.7299


■ 66.2348, 67.5573,
72.7041

■ 31.2214, 16.2134,
3.4356

■ 74.8207, 80.5587,
88.4223

 30.9843, 15.9448,
2.7227

 84.0647, 94.3930,
105.8510

 84.5504, 94.5873,
108.4086

Harmonies

Analogous

The Analogous color harmony consists of three colors that are next to each other on the color wheel.



42.0255, 31.5439, 43.8773



42.1439, 31.5439, 27.1599



38.7244, 31.5439, 16.5874

Triad

The Triadic color harmony groups three colors that are evenly spaced from another and form a triangle on the color wheel.



42.1439, 31.5439, 27.1599



22.8797, 31.5439, 16.1366



27.0241, 31.5439, 75.0864

Complementary

The Complementary color scheme is a pair of colors which are on the opposite of each other on the color wheel.



42.1439, 31.5439, 27.1599



46.3161, 62.1027, 70.5221

Split Complementary

Split-complementary colors differ from the complementary color scheme. The scheme consists of three colors, the original color and two neighbors of the complement color.



22.6649, 31.5439, 61.6680



42.1439, 31.5439, 27.1599



20.4912, 31.5439, 26.3057

Square

The Square scheme is like the rectangle color scheme, but the four colors are evenly spaced on the color wheel.



42.1439, 31.5439, 27.1599



27.3544, 31.5439, 11.7561



20.4180, 31.5439, 42.6994



32.7717, 31.5439, 75.5430

Rectangle

The Rectangle color scheme consists of four colors that form a rectangle on the color wheel.



42.1439, 31.5439, 27.1599



35.1253, 31.5439, 12.8963



20.4180, 31.5439, 42.6994



25.3662, 31.5439, 71.7868

Sweetspot

The Sweet Spot groups the original color and five complimentary colors.



42.1447, 31.5455, 27.1605



80.1313, 77.4723, 81.3924



46.6248, 32.8141, 74.3973



16.7126, 15.9224, 16.6038



0.0000, 0.0000, 0.0000



20.3446, 21.4041, 23.3091

Same Dimension

The Same Dimension uses a secret algorithm to generate beautiful new colors.



42.1447, 31.5455, 27.1605



51.6449, 35.1856, 26.6215



46.4301, 41.6054, 23.9979



13.7834, 13.7310, 14.6298



18.0595, 9.2908, 1.7134



1.2767, 0.6539, 0.2498

Inverse Universe

The Inverse Universe completely reimagines the original color for something new.



42.1447, 31.5455, 27.1605



51.6449, 35.1856, 26.6215



39.5293, 45.6155, 77.2422



13.7834, 13.7310, 14.6298



18.0595, 9.2908, 1.7134



1.2767, 0.6539, 0.2498

Previews

White Background



This preview shows how the XYZ color 42.1439, 31.5439, 27.1599 looks on a white background.

Color Contrast Check

Large Text (above 18pt) WCAG AA × Fail

Any Text WCAG AA × Fail

Large Text (above 18pt) WCAG AAA × Fail

Any Text WCAG AAA × Fail

Black Background



This preview shows how the XYZ color 42.1439, 31.5439, 27.1599 looks on a black background.

Color Contrast Check

Large Text (above 18pt) WCAG AA ✓ Pass

Any Text WCAG AA ✓ Pass

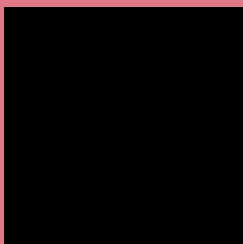
Large Text (above 18pt) WCAG AAA ✓ Pass

Any Text WCAG AAA ✓ Pass

If you want to check with other color combinations, try the [Color Contrast Checker](#).

XYZ 42.1439, 31.5439, 27.1599

Background



This preview shows how black text looks on a background with the XYZ color 42.1439, 31.5439, 27.1599.



This preview shows how white text looks on a background with the XYZ color 42.1439, 31.5439,

Color Blindness Simulation

Color vision deficiency is a very complex topic, and I could not describe the different causes any better than Wikipedia does, so if you want to learn more, you should check out their [article about color blindness](#).

Dichromacy



Original Color

42.1439, 31.5439, 27.1599

Protanopia

30.6060, 31.7914, 34.2290

Deuteranopia

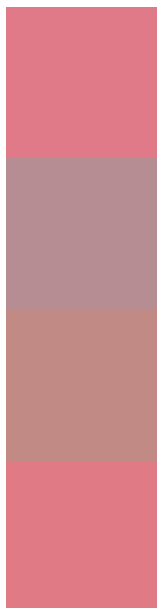
32.2778, 31.6473, 26.2371



Tritanopia

41.9883, 31.6792, 25.7315

Trichromacy



Original Color

42.1439, 31.5439, 27.1599

Protanomaly

33.7692, 30.9488, 31.3880

Deuteranomaly

35.3144, 31.2079, 26.3527

Tritanomaly

42.0571, 31.7067, 26.0936

Monochromacy



Original Color

42.1439, 31.5439, 27.1599

Achromatopsia

30.7148, 32.3143, 35.1903

Achromatomaly

33.5299, 31.0363, 31.8272

CSS Examples

Text

The CSS property to change the color of the text to XYZ 42.1439, 31.5439, 27.1599 is called "color". The color property can be set on classes, ids or directly on the HTML element.

This example shows how text in the color `rgb(224, 122, 136)` looks like.

```
.text, #text, p{  
    color:rgb(224, 122, 136)  
}
```

If you want to add a text shadow in that color use the text-shadow property, you can generate a text shadow directly with our [CSS Text Shadow Generator](#).

Here you see how black text with a 4 pixel rgb(224, 122, 136) colored shadow looks like.

```
.shadow{ text-shadow: 4px 4px 2px rgb(224, 122, 136) }
```

Border

The CSS property to change the border of an element to XYZ 42.1439, 31.5439, 27.1599 is called "border". The border property can be set on classes, ids or directly on the HTML element.

This example shows the color as border, it can be applied via the CSS property "border" or "border-color".

```
.border, #border, table{ border:4px solid rgb(224, 122, 136) }
```


If only the border color should be changed use the property `border-color`.

```
.border{ border-color:rgb(224, 122, 136) }
```

If you want to add a box shadow in that color use:

Here you see how a box with a 4 pixel `rgb(224, 122, 136)` colored shadow looks like.

```
.boxshadow{ -moz-box-shadow:4px 4px 4px  
4px rgb(224, 122, 136); -webkit-box-  
shadow:4px 4px 4px 4px rgb(224, 122, 136);  
box-shadow:4px 4px 4px 4px rgb(224, 122,  
136) }
```

Background

The CSS property to change the background color of an element to XYZ 42.1439, 31.5439, 27.1599 is called "background". The background property can be set on classes, ids or directly on the HTML element.

```
.background, #background, body{  
background: rgb(224, 122, 136) }
```

If only the background color should be changed can be used:

```
.background{ background-color: rgb(224,  
122, 136) }
```

This example shows the color as background, it is applied via the CSS property "background".

To optimize and compress your CSS code, you can use our [online CSS compressor and optimizer](#) based on csstidy. If you want to create a linear or radial gradient as background or border, check our [CSS Gradient Generator](#).

Hey! You found this booklet interesting? Support Converting Colors with the new Membership Option!

The pro membership hides all ads, plus gives you double the colors in the color bucket, and more awesome pro features!

[Learn more, Memberships starting at \\$2.50/m!](#)

**Follow me
on Twitter!**

@ConvertingColor