

Converting Colors

XYZ(42.2391, 39.3184, 37.1530)

Have a look what the booklet for
XYZ(42.2391, 39.3184, 37.1530)
contains.

XYZ(42.1321, 39.1674, 37.2378)	3
<i>Conversions</i>	4
<i>Details</i>	6
<i>Harmonies</i>	12
<i>Previews</i>	24
<i>Color Blindness Simulation</i>	28
<i>CSS Examples</i>	31

Color

**XYZ(42.1321, 39.1674,
37.2378)**

Conversions

Conversions Part 1

Format	Color
Hex	C89E9D
RGB	200, 158, 157
RGB Percent	78%, 62%, 62%
CMY	0.2157, 0.3804, 0.3843
CMYK	0.00, 0.21, 0.21, 0.22
HSL	1°, 28%, 70%
HSV	1°, 21%, 78%
XYZ	42.1321, 39.1674, 37.2378
YIQ	170.4440, 25.3530, 8.5930

Conversions

Conversions Part 2

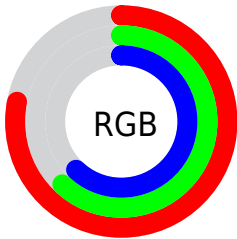
Format	Color
R _Y B	200, 158, 157
Decimal	13147805
CIE _{Lab}	68.87, 15.41, 6.47
CIE _{LCh}	69, 16.710, 22.772
Yxy	39.1674, 0.3554, 0.3304
Android (android.graphics.Color)	4291337885 (0xFFC89E9D)
YUV	170.4440, -6.6279, 25.9206
Hunter-Lab	62.5839, 10.6463, 8.5308

Details

The XYZ color **42.1321, 39.1674, 37.2378** is a light color, and the websafe version is hex **CC9999**. A complement of this color would be **44.7530, 52.1838, 62.3577**, and the grayscale version is **38.4542, 40.4568, 44.0575**.

A 20% lighter version of the original color is **76.9179, 73.6020, 72.4399**, and **19.4326, 17.3684, 15.9639** is the 20% darker color. If you saturate the color by 10%, you get **37.4913, 32.3982, 27.9448**, and if you desaturate by 10%, it is **47.5842, 47.1111, 48.1811**.

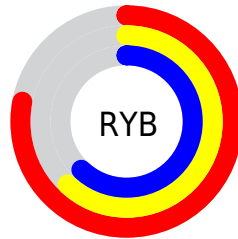
Distribution



Red (78%)

Green (62%)

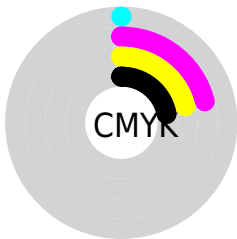
Blue (62%)



Red (78%)

Yellow (62%)

Blue (62%)

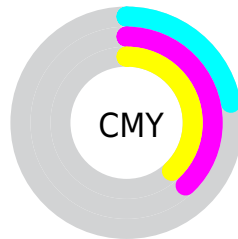


Cyan (0%)

Magenta (21%)

Yellow (21%)

Black (22%)



Cyan (22%)


Magenta (38%)


Yellow (38%)

Brightness & Saturation Gradients


These gradients show how the XYZ color 42.1321, 39.1674, 37.2378 changes by changing the brightness by 10 percent. The first figure shows a shift by +10% for each color and the second figure -10%.


Similar to the brightness gradients but the following saturation gradients show a change of the XYZ color 42.1321, 39.1674, 37.2378 by changing the saturation by 10% instead.


 42.1321, 39.1674,
37.2378


 42.1321, 39.1674,
37.2378


346.0126,
342.6017, 349.5386

 29.3963, 26.8900,
25.0944


 77.6634, 73.8940,
72.1288

 19.5266, 17.4906,
15.9278


 101.1897, 97.1119,
95.7135

 12.1577, 10.5849,
9.3193


129.0434,
124.7455, 123.9490

 6.9241, 5.7885,
4.8504

161.5901,
157.1791, 157.2540

 3.4606, 2.7169,
2.1025

199.1950,
194.7971, 196.0469

 1.4018, 0.9858,
0.6173

242.2234,

 0.2575, 0.0000,

237.9840, 240.7462

0.0000

291.0408,
287.1240, 291.7706

■ 0.0000, 0.0000,
0.0000

■ 42.1321, 39.1674,
37.2378

■ 42.1321, 39.1674,
37.2378

■ 37.4913, 32.3982,
27.9448

■ 47.5842, 47.1111,
48.1811

■ 33.6200, 26.7428,
20.2199

■ 53.8802, 56.2756,
60.8466

■ 30.4776, 22.1432,
13.9772

■ 61.0552, 66.7114,
75.3052

■ 28.0184, 18.5339,
9.1220

■ 69.1410, 78.4643,
91.6229

■ 26.1918, 15.8422,
5.5484

■ 77.6296, 91.0194,
108.0847

■ 24.9397, 13.9855,
3.1353

■ 24.1939, 12.8663,
1.7386

■ 23.8702, 12.3808,
1.1316

Harmonies

Analogous

The Analogous color harmony consists of three colors that are next to each other on the color wheel.



42.5211, 39.1674, 44.5113



42.1321, 39.1674, 37.2378



40.3998, 39.1674, 32.0392

Triad

The Triadic color harmony groups three colors that are evenly spaced from another and form a triangle on the color wheel.



42.1321, 39.1674, 37.2378



33.3114, 39.1674, 34.4043



36.5893, 39.1674, 58.8446

Complementary

The Complementary color scheme is a pair of colors which are on the opposite of each other on the color wheel.



42.1321, 39.1674, 37.2378



44.7530, 52.1838, 62.3577

Split Complementary

Split-complementary colors differ from the complementary color scheme. The scheme consists of three colors, the original color and two neighbors of the complement color.



34.2257, 39.1674, 55.3696



42.1321, 39.1674, 37.2378



32.3924, 39.1674, 40.8348

Square

The Square scheme is like the rectangle color scheme, but the four colors are evenly spaced on the color wheel.



42.1321, 39.1674, 37.2378



35.2875, 39.1674, 30.5440



32.7190, 39.1674, 48.5554



39.2372, 39.1674, 57.5861

Rectangle

The Rectangle color scheme consists of four colors that form a rectangle on the color wheel.



42.1321, 39.1674, 37.2378



38.7589, 39.1674, 30.1587



32.7190, 39.1674, 48.5554



35.7369, 39.1674, 58.1786

Sweetspot

The Sweet Spot groups the original color and five complimentary colors.



42.1332, 39.1692, 37.2386



88.1005, 89.8873, 94.9112



46.2185, 40.5305, 59.5930



18.7024, 19.0144, 20.0037



0.0000, 0.0000, 0.0000



20.3446, 21.4041, 23.3091

Same Dimension

The Same Dimension uses a secret algorithm to generate beautiful new colors.



42.1332, 39.1692, 37.2386



68.8599, 61.8553, 56.2835



46.0692, 47.0413, 38.5506



10.6534, 10.6759, 11.0619



15.1866, 7.8904, 0.7226



0.7262, 0.3878, 0.0366

Inverse Universe

The Inverse Universe completely reimagines the original color for something new.



44.7530, 52.1838, 62.3577



74.2302, 88.5371, 107.7848



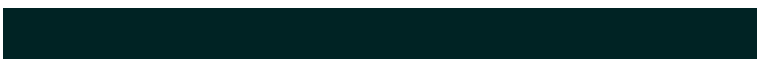
40.2078, 43.0934, 60.8426



10.9247, 12.0234, 13.6625



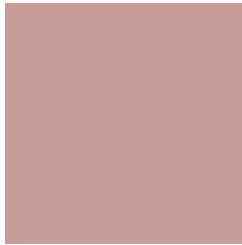
19.0942, 27.5824, 39.0619



0.9110, 1.3198, 1.8519

Previews

White Background



This preview shows how the XYZ color 42.1321, 39.1674, 37.2378 looks on a white background.

Color Contrast Check

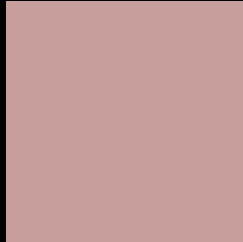
Large Text (above 18pt) WCAG AA × Fail

Any Text WCAG AA × Fail

Large Text (above 18pt) WCAG AAA × Fail

Any Text WCAG AAA × Fail

Black Background



This preview shows how the XYZ color 42.1321, 39.1674, 37.2378 looks on a black background.

Color Contrast Check

Large Text (above 18pt) WCAG AA ✓ Pass

Any Text WCAG AA ✓ Pass

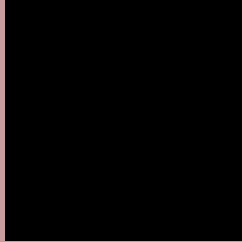
Large Text (above 18pt) WCAG AAA ✓ Pass

Any Text WCAG AAA ✓ Pass

If you want to check with other color combinations, try the [Color Contrast Checker](#).

XYZ 42.1321, 39.1674, 37.2378

Background



This preview shows how black text looks on a background with the XYZ color 42.1321, 39.1674, 37.2378.



This preview shows how white text looks on a background with the XYZ color 42.1321, 39.1674,

37.2378.

Color Blindness Simulation

Color vision deficiency is a very complex topic, and I could not describe the different causes any better than Wikipedia does, so if you want to learn more, you should check out their [article about color blindness](#).

Dichromacy



Original Color

42.1321, 39.1674, 37.2378

Protanopia

37.7578, 39.4981, 39.8163

Deuteranopia

39.9073, 39.0598, 36.8884



Tritanopia

43.0437, 39.0216, 42.3091

Trichromacy



Original Color

42.1321, 39.1674, 37.2378

Protanomaly

39.1491, 39.1563, 38.7522

Deuteranomaly

40.7379, 39.2275, 36.8770

Tritanomaly

42.8452, 39.2118, 40.4324

Monochromacy



Original Color

42.1321, 39.1674, 37.2378

Achromatopsia

38.2080, 40.1978, 43.7754

Achromatomaly

39.4838, 39.8128, 41.2009

CSS Examples

Text

The CSS property to change the color of the text to XYZ 42.1321, 39.1674, 37.2378 is called "color". The color property can be set on classes, ids or directly on the HTML element.

This example shows how text in the color `rgb(200, 158, 157)` looks like.

```
.text, #text, p{  
  color:rgb(200, 158, 157)  
}
```

If you want to add a text shadow in that color use the text-shadow property, you can generate a text shadow directly with our [CSS Text Shadow Generator](#).

Here you see how black text with a 4 pixel rgb(200, 158, 157) colored shadow looks like.

```
.shadow{ text-shadow: 4px 4px 2px rgb(200, 158, 157) }
```

Border

The CSS property to change the border of an element to XYZ 42.1321, 39.1674, 37.2378 is called "border". The border property can be set on classes, ids or directly on the HTML element.

This example shows the color as border, it can be applied via the CSS property "border" or "border-color".

```
.border, #border, table{ border:4px solid rgb(200, 158, 157) }
```


If only the border color should be changed use the property border-color.

```
.border{ border-color:rgb(200, 158, 157) }
```

If you want to add a box shadow in that color use:

Here you see how a box with a 4 pixel rgb(200, 158, 157) colored shadow looks like.

```
.boxshadow{ -moz-box-shadow:4px 4px 4px  
4px rgb(200, 158, 157); -webkit-box-  
shadow:4px 4px 4px 4px rgb(200, 158, 157);  
box-shadow:4px 4px 4px 4px rgb(200, 158,  
157) }
```

Background

The CSS property to change the background color of an element to XYZ 42.1321, 39.1674, 37.2378 is called "background". The background property can be set on classes, ids or directly on the HTML element.

```
.background, #background, body{  
background: rgb(200, 158, 157) }
```

If only the background color should be changed can be used:

```
.background{ background-color: rgb(200,  
158, 157) }
```

This example shows the color as background, it is applied via the CSS property "background".

To optimize and compress your CSS code, you can use our [online CSS compressor and optimizer](#) based on csstidy. If you want to create a linear or radial gradient as background or border, check our [CSS Gradient Generator](#).

Hey! You found this booklet interesting? Support Converting Colors with the new Membership Option!

The pro membership hides all ads, plus gives you double the colors in the color bucket, and more awesome pro features!

[Learn more, Memberships starting at \\$2.50/m!](#)

**Follow me
on Twitter!**

@ConvertingColor