

Converting Colors

XYZ(42.2509, 37.7541, 29.0649)

Have a look what the booklet for
XYZ(42.2509, 37.7541, 29.0649)
contains.

XYZ(42.2324, 37.6698, 29.0899)	3
<i>Conversions</i>	4
<i>Details</i>	6
<i>Harmonies</i>	12
<i>Previews</i>	24
<i>Color Blindness Simulation</i>	28
<i>CSS Examples</i>	31

Color

**XYZ(42.2324, 37.6698,
29.0899)**

Conversions

Conversions Part 1

Format	Color
Hex	D2978A
RGB	210, 151, 138
RGB Percent	82%, 59%, 54%
CMY	0.1765, 0.4078, 0.4588
CMYK	0.00, 0.28, 0.34, 0.18
HSL	11°, 44%, 68%
HSV	11°, 34%, 82%
XYZ	42.2324, 37.6698, 29.0899
YIQ	167.1590, 39.3370, 8.4650

Conversions

Conversions Part 2

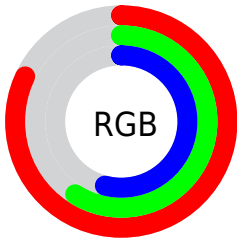
Format	Color
R _Y B	210, 154, 138
Decimal	13801354
CIE Lab	67.78, 20.43, 15.63
CIE LCh	68, 25.726, 37.413
Yxy	37.6698, 0.3875, 0.3456
Android (android.graphics.Color)	4291991434 (0xFFD2978A)
YUV	167.1590, -14.3754, 37.5716
Hunter-Lab	61.3757, 15.4176, 14.8617

Details

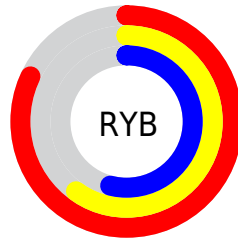
The XYZ color **42.2324, 37.6698, 29.0899** is a light color, and the websafe version is hex **CC9999**. A complement of this color would be **42.0797, 49.9873, 68.4035**, and the grayscale version is **36.8633, 38.7831, 42.2348**.

A 20% lighter version of the original color is **72.4753, 68.6842, 58.7277**, and **19.6450, 16.6889, 11.4184** is the 20% darker color. If you saturate the color by 10%, you get **38.2866, 31.9805, 20.9849**, and if you desaturate by 10%, it is **46.8784, 44.2887, 38.8793**.

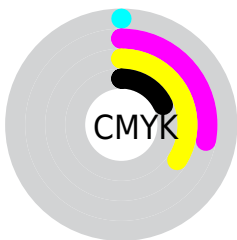
Distribution



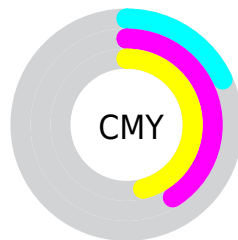
- Red (82%)
- Green (59%)
- Blue (54%)



- Red (82%)
- Yellow (60%)
- Blue (54%)



- Cyan (0%)
- Magenta (28%)
- Yellow (34%)
- Black (18%)





- Cyan (18%)
- Magenta (41%)
- Yellow (46%)

Brightness & Saturation Gradients


These gradients show how the XYZ color 42.2324, 37.6698, 29.0899 changes by changing the brightness by 10 percent. The first figure shows a shift by +10% for each color and the second figure -10%.

Similar to the brightness gradients but the following saturation gradients show a change of the XYZ color 42.2324, 37.6698, 29.0899 by changing the saturation by 10% instead.


 42.2324, 37.6698,
29.0899


 42.2324, 37.6698,
29.0899


346.4207,
336.2014, 311.7131


 29.4752, 25.7265,
18.9027


 77.8142, 71.6017,
59.2638

 19.5867, 16.6192,
11.4239

 101.3695, 94.3592,
80.0875

 12.2015, 9.9633,
6.2350


 129.2549,
121.4901, 105.2938

 6.9542, 5.3747,
2.9174

161.8358,
153.3790, 135.3013

 3.4796, 2.4687,
1.0526

199.4774,
190.4102, 170.5284

 1.4121, 0.8609,
0.0000

242.5452,

 0.2649, 0.0000,

232.9680, 211.3937

0.0000

291.4045,
281.4370, 258.3157

■ 0.0000, 0.0000,
0.0000

■ 42.2324, 37.6698,
29.0899

■ 42.2324, 37.6698,
29.0899

■ 38.2866, 31.9805,
20.9849

■ 46.8784, 44.2887,
38.8793

■ 35.0035, 27.1737,
14.4668

■ 52.2536, 51.8707,
50.4387

■ 32.3467, 23.2063,
9.4312

■ 58.3890, 60.4545,
63.8506

■ 30.2749, 20.0293,
5.7606

■ 65.3130, 70.0748,
79.1916

■ 28.7415, 17.5886,
3.3190

■ 73.0523, 80.7649,
96.5340

■ 27.6920, 15.8227,
1.9424

■ 80.1490, 91.9628,
108.1340

■ 27.2692, 15.0833,
1.4741

■ 80.3884, 92.4417,
108.2138

Harmonies

Analogous

The Analogous color harmony consists of three colors that are next to each other on the color wheel.



43.9410, 37.6698, 38.2528



42.2324, 37.6698, 29.0899



38.8243, 37.6698, 23.9266

Triad

The Triadic color harmony groups three colors that are evenly spaced from another and form a triangle on the color wheel.



42.2324, 37.6698, 29.0899



29.1933, 37.6698, 33.1614



36.8005, 37.6698, 66.8125

Complementary

The Complementary color scheme is a pair of colors which are on the opposite of each other on the color wheel.



42.2324, 37.6698, 29.0899



42.0797, 49.9873, 68.4035

Split Complementary

Split-complementary colors differ from the complementary color scheme. The scheme consists of three colors, the original color and two neighbors of the complement color.



32.9446, 37.6698, 64.7603



42.2324, 37.6698, 29.0899



28.7392, 37.6698, 43.9091

Square

The Square scheme is like the rectangle color scheme, but the four colors are evenly spaced on the color wheel.



42.2324, 37.6698, 29.0899



31.3532, 37.6698, 25.9555



30.0635, 37.6698, 55.8237



40.6573, 37.6698, 61.0014

Rectangle

The Rectangle color scheme consists of four colors that form a rectangle on the color wheel.



42.2324, 37.6698, 29.0899



36.1505, 37.6698, 22.7872



30.0635, 37.6698, 55.8237



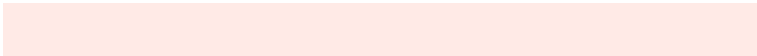
35.4598, 37.6698, 67.0354

Sweetspot

The Sweet Spot groups the original color and five complimentary colors.



42.2334, 37.6716, 29.0907



84.9057, 85.8509, 86.5912



45.8601, 35.9562, 57.9494



17.8894, 17.9779, 17.9149



0.0000, 0.0000, 0.0000



20.3446, 21.4041, 23.3091

Same Dimension

The Same Dimension uses a secret algorithm to generate beautiful new colors.



42.2334, 37.6716, 29.0907



61.0314, 51.9766, 35.8603



48.7249, 50.6547, 31.2545



11.9790, 12.1486, 12.3256



16.6868, 9.3066, 0.9169



0.9865, 0.6273, 0.0691

Inverse Universe

The Inverse Universe completely reimagines the original color for something new.



42.0797, 49.9873, 68.4035



60.7398, 73.8050, 105.6522



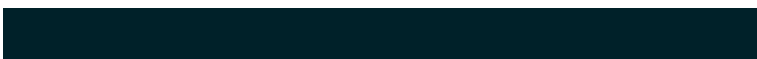
35.0348, 35.8975, 66.0552



11.9692, 13.0287, 15.1276



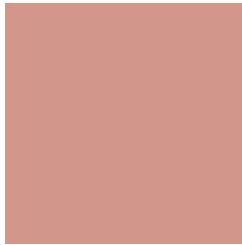
16.1704, 20.9874, 40.3912



0.9527, 1.2705, 2.2746

Previews

White Background



This preview shows how the XYZ color 42.2324, 37.6698, 29.0899 looks on a white background.

Color Contrast Check

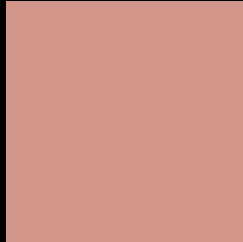
Large Text (above 18pt) WCAG AA × Fail

Any Text WCAG AA × Fail

Large Text (above 18pt) WCAG AAA × Fail

Any Text WCAG AAA × Fail

Black Background



This preview shows how the XYZ color 42.2324, 37.6698, 29.0899 looks on a black background.

Color Contrast Check

Large Text (above 18pt) WCAG AA ✓ Pass

Any Text WCAG AA ✓ Pass

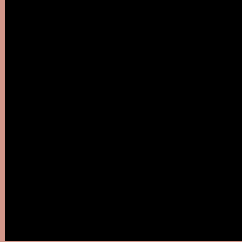
Large Text (above 18pt) WCAG AAA ✓ Pass

Any Text WCAG AAA ✓ Pass

If you want to check with other color combinations, try the [Color Contrast Checker](#).

XYZ 42.2324, 37.6698, 29.0899

Background



This preview shows how black text looks on a background with the XYZ color 42.2324, 37.6698, 29.0899.



This preview shows how white text looks on a background with the XYZ color 42.2324, 37.6698,

Color Blindness Simulation

Color vision deficiency is a very complex topic, and I could not describe the different causes any better than Wikipedia does, so if you want to learn more, you should check out their [article about color blindness](#).

Dichromacy



Original Color

42.2324, 37.6698, 29.0899

Protanopia

35.7995, 37.8388, 32.2049

Deuteranopia

38.5803, 37.7803, 28.5515



Tritanopia

43.9993, 37.6801, 37.7549

Trichromacy



Original Color

42.2324, 37.6698, 29.0899

Protanomaly

37.7030, 37.5337, 30.8488

Deuteranomaly

39.9570, 37.7252, 28.8426

Tritanomaly

43.1973, 37.5781, 34.2547

Monochromacy



Original Color

42.2324, 37.6698, 29.0899

Achromatopsia

36.7301, 38.6429, 42.0822

Achromatomaly

38.2741, 37.9573, 36.7617

CSS Examples

Text

The CSS property to change the color of the text to XYZ 42.2324, 37.6698, 29.0899 is called "color". The color property can be set on classes, ids or directly on the HTML element.

This example shows how text in the color `rgb(210, 151, 138)` looks like.

```
.text, #text, p{  
    color:rgb(210, 151, 138)  
}
```

If you want to add a text shadow in that color use the text-shadow property, you can generate a text shadow directly with our [CSS Text Shadow Generator](#).

Here you see how black text with a 4 pixel rgb(210, 151, 138) colored shadow looks like.

```
.shadow{ text-shadow: 4px 4px 2px rgb(210, 151, 138) }
```

Border

The CSS property to change the border of an element to XYZ 42.2324, 37.6698, 29.0899 is called "border". The border property can be set on classes, ids or directly on the HTML element.

This example shows the color as border, it can be applied via the CSS property "border" or "border-color".

```
.border, #border, table{ border:4px solid rgb(210, 151, 138) }
```


If only the border color should be changed use the property `border-color`.

```
.border{ border-color:rgb(210, 151, 138) }
```

If you want to add a box shadow in that color use:

Here you see how a box with a 4 pixel `rgb(210, 151, 138)` colored shadow looks like.

```
.boxshadow{ -moz-box-shadow:4px 4px 4px  
4px rgb(210, 151, 138); -webkit-box-  
shadow:4px 4px 4px 4px rgb(210, 151, 138);  
box-shadow:4px 4px 4px 4px rgb(210, 151,  
138) }
```

Background

The CSS property to change the background color of an element to XYZ 42.2324, 37.6698, 29.0899 is called "background". The background property can be set on classes, ids or directly on the HTML element.

```
.background, #background, body{  
background: rgb(210, 151, 138) }
```

If only the background color should be changed can be used:

```
.background{ background-color: rgb(210,  
151, 138) }
```

This example shows the color as background, it is applied via the CSS property "background".

To optimize and compress your CSS code, you can use our [online CSS compressor and optimizer](#) based on csstidy. If you want to create a linear or radial gradient as background or border, check our [CSS Gradient Generator](#).

Hey! You found this booklet interesting? Support Converting Colors with the new Membership Option!

The pro membership hides all ads, plus gives you double the colors in the color bucket, and more awesome pro features!

[Learn more, Memberships starting at \\$2.50/m!](#)

**Follow me
on Twitter!**

@ConvertingColor