

Converting Colors

XYZ(42.2514, 38.5923, 35.7660)

Have a look what the booklet for
XYZ(42.2514, 38.5923, 35.7660)
contains.

XYZ(42.1827, 38.4723, 35.7745)	3
<i>Conversions</i>	4
<i>Details</i>	6
<i>Harmonies</i>	12
<i>Previews</i>	24
<i>Color Blindness Simulation</i>	28
<i>CSS Examples</i>	31

Color

**XYZ(42.1827, 38.4723,
35.7745)**

Conversions

Conversions Part 1

Format	Color
Hex	CB9B9A
RGB	203, 155, 154
RGB Percent	80%, 61%, 60%
CMY	0.2039, 0.3921, 0.3961
CMYK	0.00, 0.24, 0.24, 0.20
HSL	1°, 32%, 70%
HSV	1°, 24%, 80%
XYZ	42.1827, 38.4723, 35.7745
YIQ	169.2380, 28.9290, 9.8650

Conversions

Conversions Part 2

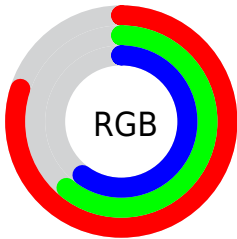
Format	Color
R _Y B	203, 155, 154
Decimal	13343642
CIE Lab	68.37, 17.74, 7.45
CIE LCh	68, 19.240, 22.794
Yxy	38.4723, 0.3623, 0.3304
Android (android.graphics.Color)	4291533722 (0xFFCB9B9A)
YUV	169.2380, -7.5123, 29.6093
Hunter-Lab	62.0260, 12.8488, 9.2218

Details

The XYZ color **42.1827, 38.4723, 35.7745** is a light color, and the websafe version is hex **CC9999**. A complement of this color would be **45.2259, 53.4214, 64.4279**, and the grayscale version is **37.8568, 39.8283, 43.3730**.

A 20% lighter version of the original color is **75.6718, 71.9073, 69.5657**, and **19.6112, 17.1758, 15.1136** is the 20% darker color. If you saturate the color by 10%, you get **37.5918, 31.7712, 26.5963**, and if you desaturate by 10%, it is **47.6065, 46.3812, 46.6419**.

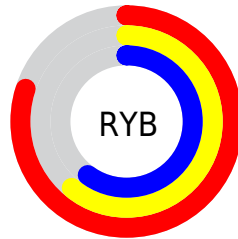
Distribution



Red (80%)

Green (61%)

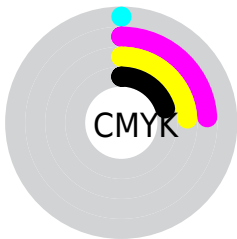
Blue (60%)



Red (80%)

Yellow (61%)

Blue (60%)

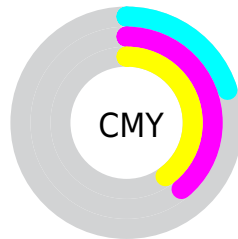


Cyan (0%)

Magenta (24%)

Yellow (24%)

Black (20%)



Cyan (20%)


Magenta (39%)


Yellow (40%)

Brightness & Saturation Gradients


These gradients show how the XYZ color 42.1827, 38.4723, 35.7745 changes by changing the brightness by 10 percent. The first figure shows a shift by +10% for each color and the second figure -10%.


Similar to the brightness gradients but the following saturation gradients show a change of the XYZ color 42.1827, 38.4723, 35.7745 by changing the saturation by 10% instead.

 42.1827, 38.4723,
35.7745


 42.1827, 38.4723,
35.7745


346.2185,
339.6417, 342.9814

 29.4361, 26.3495,
23.9718


 77.7395, 72.8315,
69.8490

 19.5569, 17.0853,
15.1007


 101.2804, 95.8366,
92.9578

 12.1798, 10.2953,
8.7427


129.1501,
123.2379, 120.6725

 6.9393, 5.5952,
4.4792

161.7140,
155.4199, 153.4114

 3.4702, 2.6005,
1.8917

199.3375,
192.7668, 191.5933

 1.4070, 0.9269,
0.4875

242.3858,

 0.2612, 0.0000,

235.6632, 235.6365

0.0000

291.2243,
284.4934, 285.9597

■ 0.0000, 0.0000,
0.0000

■ 42.1827, 38.4723,
35.7745

■ 42.1827, 38.4723,
35.7745

■ 37.5918, 31.7712,
26.5963

■ 47.6065, 46.3812,
46.6419

■ 33.7898, 26.2134,
19.0202

■ 53.8984, 55.5474,
59.2747

■ 30.7330, 21.7368,
12.9552

■ 61.0951, 66.0244,
73.7475

■ 28.3727, 18.2709,
8.3000

■ 69.2305, 77.8609,
90.1297

■ 26.6540, 15.7373,
4.9411

■ 78.2558, 91.0708,
108.0616

■ 25.5140, 14.0456,
2.7472

■ 78.4387, 91.4366,
108.1226

■ 24.8771, 13.0880,
1.5597

■ 24.6739, 12.7869,
1.1677

Harmonies

Analogous

The Analogous color harmony consists of three colors that are next to each other on the color wheel.



42.6324, 38.4723, 44.0097



42.1827, 38.4723, 35.7745



40.1898, 38.4723, 29.9966

Triad

The Triadic color harmony groups three colors that are evenly spaced from another and form a triangle on the color wheel.



42.1827, 38.4723, 35.7745



32.1362, 38.4723, 32.6211



35.8435, 38.4723, 60.6392

Complementary

The Complementary color scheme is a pair of colors which are on the opposite of each other on the color wheel.



42.1827, 38.4723, 35.7745



45.2259, 53.4214, 64.4279

Split Complementary

Split-complementary colors differ from the complementary color scheme. The scheme consists of three colors, the original color and two neighbors of the complement color.



33.1683, 38.4723, 56.5724



42.1827, 38.4723, 35.7745



31.1056, 38.4723, 39.8391

Square

The Square scheme is like the rectangle color scheme, but the four colors are evenly spaced on the color wheel.



42.1827, 38.4723, 35.7745



34.3640, 38.4723, 28.3584



31.4728, 38.4723, 48.6651



38.8617, 38.4723, 59.1584

Rectangle

The Rectangle color scheme consists of four colors that form a rectangle on the color wheel.



42.1827, 38.4723, 35.7745



38.3107, 38.4723, 27.9333



31.4728, 38.4723, 48.6651



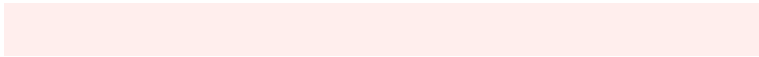
34.8766, 38.4723, 59.8587

Sweetspot

The Sweet Spot groups the original color and five complimentary colors.



42.1837, 38.4741, 35.7753



86.9817, 88.2506, 92.6854



46.8670, 40.0812, 61.2576



18.4764, 18.6835, 19.5547



0.0000, 0.0000, 0.0000



20.3446, 21.4041, 23.3091

Same Dimension

The Same Dimension uses a secret algorithm to generate beautiful new colors.



42.1837, 38.4741, 35.7753



66.4295, 58.2861, 51.4921



46.6454, 47.3973, 37.2625



11.2304, 11.2498, 11.6590



15.7104, 8.1537, 0.7458



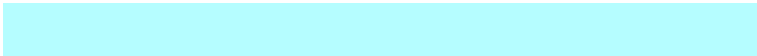
0.8171, 0.4338, 0.0407

Inverse Universe

The Inverse Universe completely reimagines the original color for something new.



45.2259, 53.4214, 64.4279



72.3964, 87.6070, 107.7019



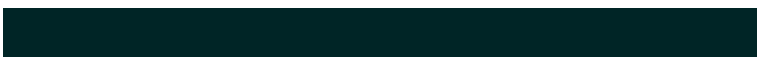
39.9638, 42.8972, 62.6739



11.5228, 12.6861, 14.4117



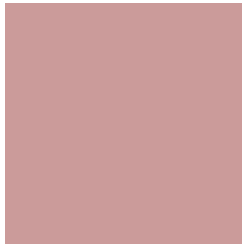
19.8428, 28.7096, 40.4520



1.0301, 1.4939, 2.0890

Previews

White Background



This preview shows how the XYZ color 42.1827, 38.4723, 35.7745 looks on a white background.

Color Contrast Check

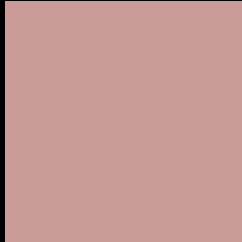
Large Text (above 18pt) WCAG AA × Fail

Any Text WCAG AA × Fail

Large Text (above 18pt) WCAG AAA × Fail

Any Text WCAG AAA × Fail

Black Background



This preview shows how the XYZ color 42.1827, 38.4723, 35.7745 looks on a black background.

Color Contrast Check

Large Text (above 18pt) WCAG AA ✓ Pass

Any Text WCAG AA ✓ Pass

Large Text (above 18pt) WCAG AAA ✓ Pass

Any Text WCAG AAA ✓ Pass

If you want to check with other color combinations, try the [Color Contrast Checker](#).

XYZ 42.1827, 38.4723, 35.7745

Background



This preview shows how black text looks on a background with the XYZ color 42.1827, 38.4723, 35.7745.



This preview shows how white text looks on a background with the XYZ color 42.1827, 38.4723,

35.7745.

Color Blindness Simulation

Color vision deficiency is a very complex topic, and I could not describe the different causes any better than Wikipedia does, so if you want to learn more, you should check out their [article about color blindness](#).

Dichromacy



Original Color

42.1827, 38.4723, 35.7745

Protanopia

36.9946, 38.5812, 38.7548

Deuteranopia

39.2337, 38.4810, 35.4967



Tritanopia

43.0846, 38.3364, 40.7262

Trichromacy



Original Color

42.1827, 38.4723, 35.7745

Protanomaly

38.6203, 38.3766, 37.7197

Deuteranomaly

40.1402, 38.4336, 35.4398

Tritanomaly

42.8905, 38.5218, 38.8931

Monochromacy



Original Color

42.1827, 38.4723, 35.7745

Achromatopsia

37.7116, 39.6755, 43.2066

Achromatomaly

39.0324, 39.0550, 40.6031

CSS Examples

Text

The CSS property to change the color of the text to XYZ 42.1827, 38.4723, 35.7745 is called "color". The color property can be set on classes, ids or directly on the HTML element.

This example shows how text in the color `rgb(203, 155, 154)` looks like.

```
.text, #text, p{  
    color:rgb(203, 155, 154)  
}
```

If you want to add a text shadow in that color use the text-shadow property, you can generate a text shadow directly with our [CSS Text Shadow Generator](#).

Here you see how black text with a 4 pixel rgb(203, 155, 154) colored shadow looks like.

```
.shadow{ text-shadow: 4px 4px 2px rgb(203, 155, 154) }
```

Border

The CSS property to change the border of an element to XYZ 42.1827, 38.4723, 35.7745 is called "border". The border property can be set on classes, ids or directly on the HTML element.

This example shows the color as border, it can be applied via the CSS property "border" or "border-color".

```
.border, #border, table{ border:4px solid rgb(203, 155, 154) }
```


If only the border color should be changed use the property `border-color`.

```
.border{ border-color:rgb(203, 155, 154) }
```

If you want to add a box shadow in that color use:

Here you see how a box with a 4 pixel `rgb(203, 155, 154)` colored shadow looks like.

```
.boxshadow{ -moz-box-shadow:4px 4px 4px  
4px rgb(203, 155, 154); -webkit-box-  
shadow:4px 4px 4px 4px rgb(203, 155, 154);  
box-shadow:4px 4px 4px 4px rgb(203, 155,  
154) }
```

Background

The CSS property to change the background color of an element to XYZ 42.1827, 38.4723, 35.7745 is called "background". The background property can be set on classes, ids or directly on the HTML element.

```
.background, #background, body{  
background: rgb(203, 155, 154) }
```

If only the background color should be changed can be used:

```
.background{ background-color: rgb(203,  
155, 154) }
```

This example shows the color as background, it is applied via the CSS property "background".

To optimize and compress your CSS code, you can use our [online CSS compressor and optimizer](#) based on csstidy. If you want to create a linear or radial gradient as background or border, check our [CSS Gradient Generator](#).

Hey! You found this booklet interesting? Support Converting Colors with the new Membership Option!

The pro membership hides all ads, plus gives you double the colors in the color bucket, and more awesome pro features!

[Learn more, Memberships starting at \\$2.50/m!](#)

**Follow me
on Twitter!**

@ConvertingColor