

Converting Colors

XYZ(42.2539, 39.6062, 19.6842)

Have a look what the booklet for
XYZ(42.2539, 39.6062, 19.6842)
contains.

XYZ(42.3742, 39.6826, 19.6135)	3
<i>Conversions</i>	4
<i>Details</i>	6
<i>Harmonies</i>	12
<i>Previews</i>	24
<i>Color Blindness Simulation</i>	28
<i>CSS Examples</i>	31

Color

**XYZ(42.3742, 39.6826,
19.6135)**

Conversions

Conversions Part 1

Format	Color
Hex	D59E6C
RGB	213, 158, 108
RGB Percent	84%, 62%, 42%
CMY	0.1647, 0.3804, 0.5765
CMYK	0.00, 0.26, 0.49, 0.16
HSL	29°, 56%, 63%
HSV	29°, 49%, 84%
XYZ	42.3742, 39.6826, 19.6135
YIQ	168.7450, 48.8300, -3.8900

Conversions

Conversions Part 2

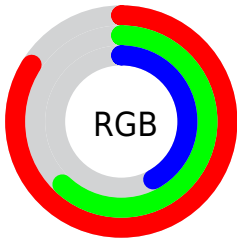
Format	Color
R_{YB}	213, 203, 108
Decimal	13999724
CIE _{Lab}	69.24, 14.54, 34.02
CIE _{LCh}	69, 36.995, 66.858
Yxy	39.6826, 0.4168, 0.3903
Android (android.graphics.Color)	4292189804 (0xFFD59E6C)
YUV	168.7450, -29.9473, 38.8116
Hunter-Lab	62.9941, 9.8317, 25.6357

Details

The XYZ color **42.3742, 39.6826, 19.6135** is a light color, and the websafe version is hex **CC9966**. A complement of this color would be **31.2911, 34.1851, 67.8997**, and the grayscale version is **37.7133, 39.6773, 43.2086**.

A 20% lighter version of the original color is **71.3794, 71.3866, 43.2746**, and **19.7574, 17.8991, 6.5512** is the 20% darker color. If you saturate the color by 10%, you get **39.5590, 35.6501, 13.7492**, and if you desaturate by 10%, it is **45.6411, 44.1753, 26.9953**.

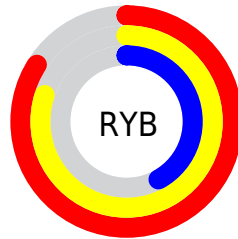
Distribution



Red (84%)

Green (62%)

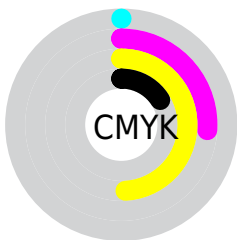
Blue (42%)



Red (84%)

Yellow (80%)

Blue (42%)

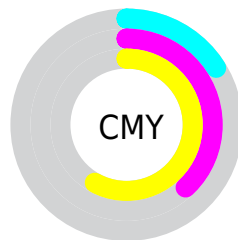


Cyan (0%)

Magenta (26%)

Yellow (49%)

Black (16%)



Cyan (16%)

Magenta (38%)

Yellow (58%)

Brightness & Saturation Gradients

These gradients show how the XYZ color 42.3742, 39.6826, 19.6135 changes by changing the brightness by 10 percent. The first figure shows a shift by +10% for each color and the second figure -10%.

Similar to the brightness gradients but the following saturation gradients show a change of the XYZ color 42.3742, 39.6826, 19.6135 by changing the saturation by 10% instead.

42.3742, 39.6826,
19.6135

42.3742, 39.6826,
19.6135

346.9971,
344.7840, 262.3497

29.5868, 27.2912,
11.9331

78.0273, 74.6799,
43.6186

19.6717, 17.7920,
6.5762

101.6236, 98.0546,
60.7805

12.2635, 10.8008,
3.1241

129.5537,
125.8592, 81.9399

6.9969, 5.9330,
1.1583

162.1829,
158.4780, 107.5155

3.5065, 2.8044,
0.0000

199.8764,
196.2955, 137.9257

1.4269, 1.0305,
0.0000

242.9997,

0.2753, 0.0000,

239.6961, 173.5891

0.0000

291.9182,
289.0641, 214.9243

■ 0.0000, 0.0000,
0.0000

■ 42.3742, 39.6826,
19.6135

■ 42.3742, 39.6826,
19.6135

■ 39.5590, 35.6501,
13.7492

■ 45.6411, 44.1753,
26.9953

■ 37.1673, 32.0546,
9.2905

■ 49.3796, 49.1386,
35.9909

■ 35.1722, 28.8791,
6.1134

■ 53.6117, 54.5896,
46.6913

■ 33.5409, 26.1027,
4.0708

■ 58.3573, 60.5427,
59.1801

■ 32.2222, 23.6965,
2.9187

■ 63.6347, 67.0118,
73.5353

■ 32.1369, 23.5389,
2.8497

■ 69.4615, 74.0099,
89.8300

■ 75.5142, 81.4136,
106.3421

■ 78.8291, 88.0433,
107.4471

■ 81.2505, 92.8861,
108.2542

Harmonies

Analogous

The Analogous color harmony consists of three colors that are next to each other on the color wheel.



47.5870, 39.6826, 26.4424



42.3742, 39.6826, 19.6135



36.3730, 39.6826, 18.2343

Triad

The Triadic color harmony groups three colors that are evenly spaced from another and form a triangle on the color wheel.



42.3742, 39.6826, 19.6135



27.4988, 39.6826, 47.2219



44.9720, 39.6826, 74.9255

Complementary

The Complementary color scheme is a pair of colors which are on the opposite of each other on the color wheel.



42.3742, 39.6826, 19.6135



31.2911, 34.1851, 67.8997

Split Complementary

Split-complementary colors differ from the complementary color scheme. The scheme consists of three colors, the original color and two neighbors of the complement color.



39.0939, 39.6826, 84.3730



42.3742, 39.6826, 19.6135



29.3160, 39.6826, 65.8829

Square

The Square scheme is like the rectangle color scheme, but the four colors are evenly spaced on the color wheel.



42.3742, 39.6826, 19.6135



28.1810, 39.6826, 31.6110



33.4144, 39.6826, 80.6908



49.1931, 39.6826, 57.3414

Rectangle

The Rectangle color scheme consists of four colors that form a rectangle on the color wheel.



42.3742, 39.6826, 19.6135



32.8006, 39.6826, 20.1464



33.4144, 39.6826, 80.6908



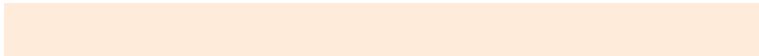
43.1019, 39.6826, 79.3425

Sweetspot

The Sweet Spot groups the original color and five complimentary colors.



42.3752, 39.6845, 19.6143



83.4305, 85.6540, 77.6109



39.5041, 27.5519, 38.3582



17.5394, 17.9324, 15.7805



0.0000, 0.0000, 0.0000



20.3446, 21.4041, 23.3091

Same Dimension

The Same Dimension uses a secret algorithm to generate beautiful new colors.



42.3752, 39.6845, 19.6143



59.3314, 53.3999, 20.4238



53.0706, 61.0753, 23.1794



12.9062, 13.3866, 13.0644



19.7316, 14.5804, 1.7743



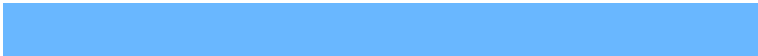
1.2727, 1.0446, 0.1345

Inverse Universe

The Inverse Universe completely reimagines the original color for something new.



31.2911, 34.1851, 67.8997



40.8287, 44.2075, 100.9887



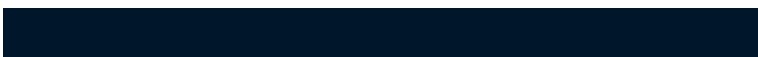
23.9341, 19.4710, 65.4473



12.2754, 13.0743, 15.8141



10.9492, 10.1602, 39.8372



0.7431, 0.7781, 2.4303

Previews

White Background



This preview shows how the XYZ color 42.3742, 39.6826, 19.6135 looks on a white background.

Color Contrast Check

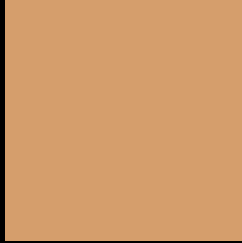
Large Text (above 18pt) WCAG AA × Fail

Any Text WCAG AA × Fail

Large Text (above 18pt) WCAG AAA × Fail

Any Text WCAG AAA × Fail

Black Background



This preview shows how the XYZ color 42.3742, 39.6826, 19.6135 looks on a black background.

Color Contrast Check

Large Text (above 18pt) WCAG AA ✓ Pass

Any Text WCAG AA ✓ Pass

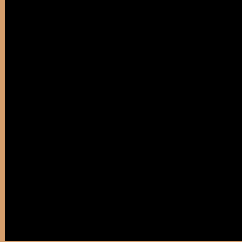
Large Text (above 18pt) WCAG AAA ✓ Pass

Any Text WCAG AAA ✓ Pass

If you want to check with other color combinations, try the [Color Contrast Checker](#).

XYZ 42.3742, 39.6826, 19.6135

Background



This preview shows how black text looks on a background with the XYZ color 42.3742, 39.6826, 19.6135.



This preview shows how white text looks on a background with the XYZ color 42.3742, 39.6826,

Color Blindness Simulation

Color vision deficiency is a very complex topic, and I could not describe the different causes any better than Wikipedia does, so if you want to learn more, you should check out their [article about color blindness](#).

Dichromacy



Original Color

42.3742, 39.6826, 19.6135

Protanopia

36.8798, 39.7361, 21.0553

Deuteranopia

40.4760, 39.7396, 19.4471



Tritanopia

46.5909, 39.6830, 39.8543

Trichromacy



Original Color

42.3742, 39.6826, 19.6135

Protanomaly

38.8301, 39.6601, 20.6475

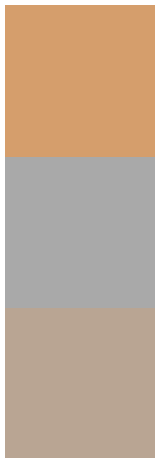
Deuteranomaly

41.1308, 39.8167, 19.4275

Tritanomaly

44.8324, 39.6933, 31.2852

Monochromacy



Original Color

42.3742, 39.6826, 19.6135

Achromatopsia

37.7116, 39.6755, 43.2066

Achromatomaly

38.7292, 39.3311, 33.1542

CSS Examples

Text

The CSS property to change the color of the text to XYZ 42.3742, 39.6826, 19.6135 is called "color". The color property can be set on classes, ids or directly on the HTML element.

This example shows how text in the color `rgb(213, 158, 108)` looks like.

```
.text, #text, p{  
    color:rgb(213, 158, 108)  
}
```

If you want to add a text shadow in that color use the text-shadow property, you can generate a text shadow directly with our [CSS Text Shadow Generator](#).

Here you see how black text with a 4 pixel rgb(213, 158, 108) colored shadow looks like.

```
.shadow{ text-shadow: 4px 4px 2px rgb(213, 158, 108) }
```

Border

The CSS property to change the border of an element to XYZ 42.3742, 39.6826, 19.6135 is called "border". The border property can be set on classes, ids or directly on the HTML element.

This example shows the color as border, it can be applied via the CSS property "border" or "border-color".

```
.border, #border, table{ border:4px solid rgb(213, 158, 108) }
```


If only the border color should be changed use the property `border-color`.

```
.border{ border-color:rgb(213, 158, 108) }
```

If you want to add a box shadow in that color use:

Here you see how a box with a 4 pixel `rgb(213, 158, 108)` colored shadow looks like.

```
.boxshadow{ -moz-box-shadow:4px 4px 4px  
4px rgb(213, 158, 108); -webkit-box-  
shadow:4px 4px 4px 4px rgb(213, 158, 108);  
box-shadow:4px 4px 4px 4px rgb(213, 158,  
108) }
```

Background

The CSS property to change the background color of an element to XYZ 42.3742, 39.6826, 19.6135 is called "background". The background property can be set on classes, ids or directly on the HTML element.

```
.background, #background, body{  
background: rgb(213, 158, 108) }
```

If only the background color should be changed can be used:

```
.background{ background-color: rgb(213,  
158, 108) }
```

This example shows the color as background, it is applied via the CSS property "background".

To optimize and compress your CSS code, you can use our [online CSS compressor and optimizer](#) based on csstidy. If you want to create a linear or radial gradient as background or border, check our [CSS Gradient Generator](#).

Hey! You found this booklet interesting? Support Converting Colors with the new Membership Option!

The pro membership hides all ads, plus gives you double the colors in the color bucket, and more awesome pro features!

[Learn more, Memberships starting at \\$2.50/m!](#)

**Follow me
on Twitter!**

@ConvertingColor