

Converting Colors

XYZ(42.2841, 39.6938, 31.3405)

Have a look what the booklet for
XYZ(42.2841, 39.6938, 31.3405)
contains.

XYZ(42.2579, 39.6168, 31.4062)	3
<i>Conversions</i>	4
<i>Details</i>	6
<i>Harmonies</i>	12
<i>Previews</i>	24
<i>Color Blindness Simulation</i>	28
<i>CSS Examples</i>	31

Color

**XYZ(42.2579, 39.6168,
31.4062)**

Conversions

Conversions Part 1

Format	Color
Hex	CC9F8F
RGB	204, 159, 143
RGB Percent	80%, 62%, 56%
CMY	0.2000, 0.3765, 0.4392
CMYK	0.00, 0.22, 0.30, 0.20
HSL	16°, 37%, 68%
HSV	16°, 30%, 80%
XYZ	42.2579, 39.6168, 31.4062
YIQ	170.6310, 31.9560, 4.5640

Conversions

Conversions Part 2

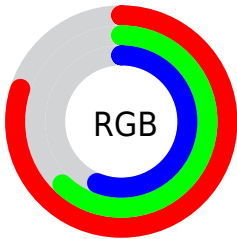
Format	Color
RYB	204, 165, 143
Decimal	13410191
CIELab	69.20, 14.39, 14.74
CIElCh	69, 20.605, 45.692
Yxy	39.6168, 0.3730, 0.3497
Android (android.graphics.Color)	4291600271 (0xFFCC9F8F)
YUV	170.6310, -13.6221, 29.2646
Hunter-Lab	62.9419, 9.6930, 14.4753

Details

The XYZ color **42.2579, 39.6168, 31.4062** is a light color, and the websafe version is hex **CC9999**. A complement of this color would be **40.2095, 46.1643, 63.9182**, and the grayscale version is **38.5794, 40.5885, 44.2009**.

A 20% lighter version of the original color is **75.3646, 73.3844, 63.0158**, and **19.6279, 17.6953, 12.7370** is the 20% darker color. If you saturate the color by 10%, you get **38.4189, 34.1911, 23.1829**, and if you desaturate by 10%, it is **46.6951, 45.7887, 41.2162**.

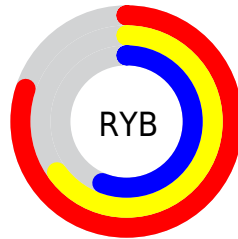
Distribution



Red (80%)

Green (62%)

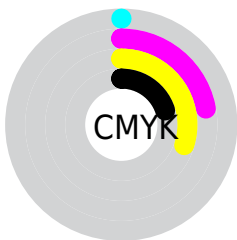
Blue (56%)



Red (80%)

Yellow (65%)

Blue (56%)

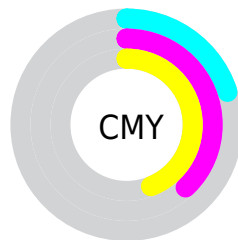


Cyan (0%)

Magenta (22%)

Yellow (30%)

Black (20%)



Cyan (20%)


Magenta (38%)


Yellow (44%)

Brightness & Saturation Gradients


These gradients show how the XYZ color 42.2579, 39.6168, 31.4062 changes by changing the brightness by 10 percent. The first figure shows a shift by +10% for each color and the second figure -10%.


Similar to the brightness gradients but the following saturation gradients show a change of the XYZ color 42.2579, 39.6168, 31.4062 by changing the saturation by 10% instead.


 42.2579, 39.6168,
31.4062


 42.2579, 39.6168,
31.4062


346.5244,
344.5058, 322.8143

 29.4953, 27.2399,
20.6473


 77.8525, 74.5796,
62.9661

 19.6020, 17.7535,
12.6777


 101.4152, 97.9344,
84.6041

 12.2126, 10.7731,
7.0789

129.3087,
125.7171, 110.7057

 6.9619, 5.9145,
3.4323

161.8982,
158.3124, 141.6892

 3.4844, 2.7932,
1.3194

199.5492,
196.1045, 177.9733

 1.4148, 1.0247,
0.0776

242.6270,

 0.2667, 0.0000,

239.4778, 219.9765

0.0000

291.4969,
288.8168, 268.1173

0.0000, 0.0000,
0.0000

42.2579, 39.6168,
31.4062

42.2579, 39.6168,
31.4062

38.4189, 34.1911,
23.1829

46.6951, 45.7887,
41.2162

35.1485, 29.4774,
16.4600

51.7521, 52.7283,
52.6883

32.4191, 25.4470,
11.1461

57.4534, 60.4631,
65.8959

30.1993, 22.0671,
7.1395

63.8210, 69.0175,
80.9074

28.4543, 19.3019,
4.3239

70.8760, 78.4149,
97.7874

■ 27.1444, 17.1117,
2.5625

■ 76.9179, 87.9895,
107.5374

■ 26.2069, 15.4456,
1.6058

■ 78.7119, 91.5774,
108.1354

■ 26.1989, 15.4315,
1.5977

Harmonies

Analogous

The Analogous color harmony consists of three colors that are next to each other on the color wheel.



44.0924, 39.6168, 38.4102



42.2579, 39.6168, 31.4062



39.2429, 39.6168, 27.8287

Triad

The Triadic color harmony groups three colors that are evenly spaced from another and form a triangle on the color wheel.



42.2579, 39.6168, 31.4062



31.8406, 39.6168, 38.8035



39.3951, 39.6168, 63.0787

Complementary

The Complementary color scheme is a pair of colors which are on the opposite of each other on the color wheel.



42.2579, 39.6168, 31.4062



40.2095, 46.1643, 63.9182

Split Complementary

Split-complementary colors differ from the complementary color scheme. The scheme consists of three colors, the original color and two neighbors of the complement color.



36.1097, 39.6168, 63.2250



42.2579, 39.6168, 31.4062



31.8761, 39.6168, 48.2343

Square

The Square scheme is like the rectangle color scheme, but the four colors are evenly spaced on the color wheel.



42.2579, 39.6168, 31.4062



33.2985, 39.6168, 31.6578



33.3983, 39.6168, 57.4736



42.3749, 39.6168, 57.0991

Rectangle

The Rectangle color scheme consists of four colors that form a rectangle on the color wheel.



42.2579, 39.6168, 31.4062



37.0294, 39.6168, 27.4766



33.3983, 39.6168, 57.4736



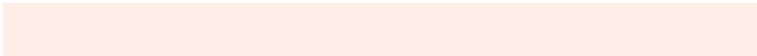
38.2867, 39.6168, 63.8380

Sweetspot

The Sweet Spot groups the original color and five complimentary colors.



42.2589, 39.6186, 31.4070



86.4079, 88.2796, 88.8667



43.8828, 36.1460, 52.6662



18.2138, 18.5121, 18.3766



0.0000, 0.0000, 0.0000



20.3446, 21.4041, 23.3091

Same Dimension

The Same Dimension uses a secret algorithm to generate beautiful new colors.



42.2589, 39.6186, 31.4070



65.6996, 59.5731, 42.7804



48.0039, 51.1085, 33.3220



11.4477, 11.6843, 11.7314



16.5552, 9.8433, 1.0274



0.9175, 0.6347, 0.0741

Inverse Universe

The Inverse Universe completely reimagines the original color for something new.



40.2095, 46.1643, 63.9182



61.7474, 72.1320, 105.2762



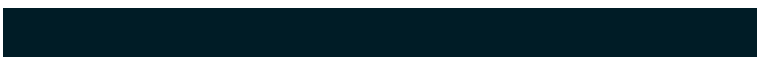
34.4968, 34.7389, 62.0140



11.2845, 12.2095, 14.3323



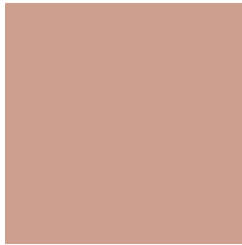
13.8519, 16.7279, 38.4550



0.7743, 0.9823, 2.0037

Previews

White Background



This preview shows how the XYZ color 42.2579, 39.6168, 31.4062 looks on a white background.

Color Contrast Check

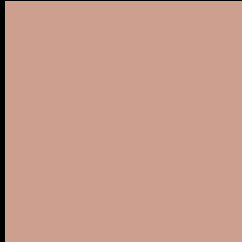
Large Text (above 18pt) WCAG AA × Fail

Any Text WCAG AA × Fail

Large Text (above 18pt) WCAG AAA × Fail

Any Text WCAG AAA × Fail

Black Background



This preview shows how the XYZ color 42.2579, 39.6168, 31.4062 looks on a black background.

Color Contrast Check

Large Text (above 18pt) WCAG AA ✓ Pass

Any Text WCAG AA ✓ Pass

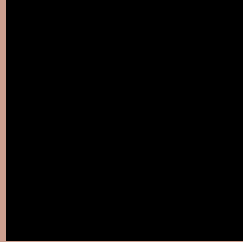
Large Text (above 18pt) WCAG AAA ✓ Pass

Any Text WCAG AAA ✓ Pass

If you want to check with other color combinations, try the [Color Contrast Checker](#).

XYZ 42.2579, 39.6168, 31.4062

Background



This preview shows how black text looks on a background with the XYZ color 42.2579, 39.6168, 31.4062.



This preview shows how white text looks on a background with the XYZ color 42.2579, 39.6168,

31.4062.

Color Blindness Simulation

Color vision deficiency is a very complex topic, and I could not describe the different causes any better than Wikipedia does, so if you want to learn more, you should check out their [article about color blindness](#).

Dichromacy



Original Color

42.2579, 39.6168, 31.4062

Protanopia

37.6647, 39.8612, 33.7258

Deuteranopia

40.4854, 39.7495, 31.1298



Tritanopia

44.4285, 39.4981, 41.8415

Trichromacy



Original Color

42.2579, 39.6168, 31.4062

Protanomaly

39.1370, 39.5504, 32.7654

Deuteranomaly

41.0915, 39.7994, 31.1075

Tritanomaly

43.5136, 39.3674, 37.6530

Monochromacy



Original Color

42.2579, 39.6168, 31.4062

Achromatopsia

38.7082, 40.7240, 44.3485

Achromatomaly

39.7802, 40.2779, 39.3960

CSS Examples

Text

The CSS property to change the color of the text to XYZ 42.2579, 39.6168, 31.4062 is called "color". The color property can be set on classes, ids or directly on the HTML element.

This example shows how text in the color `rgb(204, 159, 143)` looks like.

```
.text, #text, p{  
    color:rgb(204, 159, 143)  
}
```

If you want to add a text shadow in that color use the text-shadow property, you can generate a text shadow directly with our [CSS Text Shadow Generator](#).

Here you see how black text with a 4 pixel rgb(204, 159, 143) colored shadow looks like.

```
.shadow{ text-shadow: 4px 4px 2px rgb(204, 159, 143) }
```

Border

The CSS property to change the border of an element to XYZ 42.2579, 39.6168, 31.4062 is called "border". The border property can be set on classes, ids or directly on the HTML element.

This example shows the color as border, it can be applied via the CSS property "border" or "border-color".

```
.border, #border, table{ border:4px solid rgb(204, 159, 143) }
```


If only the border color should be changed use the property `border-color`.

```
.border{ border-color:rgb(204, 159, 143) }
```

If you want to add a box shadow in that color use:

Here you see how a box with a 4 pixel `rgb(204, 159, 143)` colored shadow looks like.

```
.boxshadow{ -moz-box-shadow:4px 4px 4px  
4px rgb(204, 159, 143); -webkit-box-  
shadow:4px 4px 4px 4px rgb(204, 159, 143);  
box-shadow:4px 4px 4px 4px rgb(204, 159,  
143) }
```

Background

The CSS property to change the background color of an element to XYZ 42.2579, 39.6168, 31.4062 is called "background". The background property can be set on classes, ids or directly on the HTML element.

```
.background, #background, body{  
background: rgb(204, 159, 143) }
```

If only the background color should be changed can be used:

```
.background{ background-color: rgb(204,  
159, 143) }
```

This example shows the color as background, it is applied via the CSS property "background".

To optimize and compress your CSS code, you can use our [online CSS compressor and optimizer](#) based on csstidy. If you want to create a linear or radial gradient as background or border, check our [CSS Gradient Generator](#).

Hey! You found this booklet interesting? Support Converting Colors with the new Membership Option!

The pro membership hides all ads, plus gives you double the colors in the color bucket, and more awesome pro features!

[Learn more, Memberships starting at \\$2.50/m!](#)

**Follow me
on Twitter!**

@ConvertingColor