

Converting Colors

XYZ(42.2947, 37.7694, 32.5437)

Have a look what the booklet for
XYZ(42.2947, 37.7694, 32.5437)
contains.

XYZ(42.5071, 37.9730, 32.6929)	3
<i>Conversions</i>	4
<i>Details</i>	6
<i>Harmonies</i>	12
<i>Previews</i>	24
<i>Color Blindness Simulation</i>	28
<i>CSS Examples</i>	31

Color

**XYZ(42.5071, 37.9730,
32.6929)**

Conversions

Conversions Part 1

Format	Color
Hex	D09893
RGB	208, 152, 147
RGB Percent	82%, 60%, 58%
CMY	0.1843, 0.4039, 0.4235
CMYK	0.00, 0.27, 0.29, 0.18
HSL	5°, 39%, 70%
HSV	5°, 29%, 82%
XYZ	42.5071, 37.9730, 32.6929
YIQ	168.1740, 34.9810, 10.3170

Conversions

Conversions Part 2

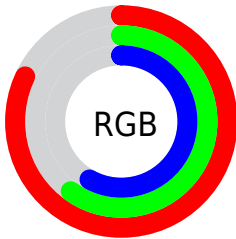
Format	Color
R _Y B	208, 152, 147
Decimal	13670547
CIE Lab	68.00, 20.29, 10.90
CIE LCh	68, 23.037, 28.251
Yxy	37.9730, 0.3756, 0.3355
Android (android.graphics.Color)	4291860627 (0xFFD09893)
YUV	168.1740, -10.4388, 34.9274
Hunter-Lab	61.6222, 15.2906, 11.6800

Details

The XYZ color **42.5071, 37.9730, 32.6929** is a light color, and the websafe version is hex **CC9999**. A complement of this color would be **44.7729, 53.4670, 67.6349**, and the grayscale version is **37.3434, 39.2882, 42.7848**.

A 20% lighter version of the original color is **74.0954, 70.1027, 64.8843**, and **19.7139, 16.8273, 13.2753** is the 20% darker color. If you saturate the color by 10%, you get **38.1668, 31.6724, 23.9085**, and if you desaturate by 10%, it is **47.6434, 45.3929, 43.1993**.

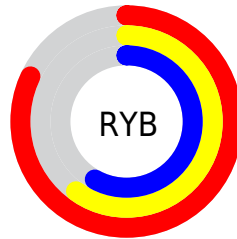
Distribution



Red (82%)

Green (60%)

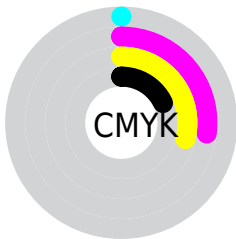
Blue (58%)



Red (82%)

Yellow (60%)

Blue (58%)

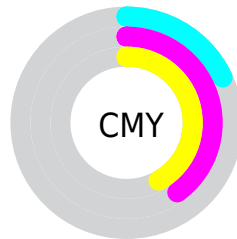


Cyan (0%)

Magenta (27%)

Yellow (29%)

Black (18%)



Cyan (18%)


Magenta (40%)


Yellow (42%)

Brightness & Saturation Gradients


These gradients show how the XYZ color 42.5071, 37.9730, 32.6929 changes by changing the brightness by 10 percent. The first figure shows a shift by +10% for each color and the second figure -10%.


Similar to the brightness gradients but the following saturation gradients show a change of the XYZ color 42.5071, 37.9730, 32.6929 by changing the saturation by 10% instead.


 42.5071, 37.9730,
32.6929


 42.5071, 37.9730,
32.6929


347.5367,
337.5041, 328.8531

 29.6914, 25.9617,
21.6221


 78.2269, 72.0668,
65.0062

 19.7514, 16.7950,
13.3838


 101.8617, 94.9180,
87.0859

 12.3217, 10.0885,
7.5596


129.8336,
122.1514, 113.6722

 7.0369, 5.4576,
3.7307

162.5079,
154.1514, 145.1838

 3.5317, 2.5182,
1.4788

200.2500,
191.3022, 182.0391

 1.4408, 0.8857,
0.2021

243.4253,

 0.2850, 0.0000,

233.9883, 224.6567

0.0000

292.3991,
282.5942, 273.4552

■ 0.0000, 0.0000,
0.0000

■ 42.5071, 37.9730,
32.6929

■ 42.5071, 37.9730,
32.6929

■ 38.1668, 31.6724,
23.9085

■ 47.6434, 45.3929,
43.1993

■ 34.5798, 26.4318,
16.7522

■ 53.6097, 53.9771,
55.5105

■ 31.7038, 22.1944,
11.1244

■ 60.4415, 63.7747,
69.7065

■ 29.4913, 18.8960,
6.9138

■ 68.1716, 74.8303,
85.8618

■ 27.8889, 16.4651,
3.9938

■ 76.8309, 87.1864,
104.0470

■ 26.8347, 14.8196,
2.2154

■ 79.8224, 92.1499,
108.1874

■ 26.2421, 13.8570,
1.3318

■ 26.2139, 13.8128,
1.2845

Harmonies

Analogous

The Analogous color harmony consists of three colors that are next to each other on the color wheel.



43.4252, 37.9730, 41.9513



42.5071, 37.9730, 32.6929



39.8399, 37.9730, 26.7358

Triad

The Triadic color harmony groups three colors that are evenly spaced from another and form a triangle on the color wheel.



42.5071, 37.9730, 32.6929



30.5453, 37.9730, 31.8090



35.8823, 37.9730, 64.3681

Complementary

The Complementary color scheme is a pair of colors which are on the opposite of each other on the color wheel.



42.5071, 37.9730, 32.6929



44.7729, 53.4670, 67.6349

Split Complementary

Split-complementary colors differ from the complementary color scheme. The scheme consists of three colors, the original color and two neighbors of the complement color.



32.5872, 37.9730, 60.4951



42.5071, 37.9730, 32.6929



29.6350, 37.9730, 40.7468

Square

The Square scheme is like the rectangle color scheme, but the four colors are evenly spaced on the color wheel.



42.5071, 37.9730, 32.6929



32.9286, 37.9730, 26.2880



30.3575, 37.9730, 51.4056



39.4522, 37.9730, 61.2746

Rectangle

The Rectangle color scheme consists of four colors that form a rectangle on the color wheel.



42.5071, 37.9730, 32.6929



37.5132, 37.9730, 24.8818



30.3575, 37.9730, 51.4056



34.7075, 37.9730, 63.8267

Sweetspot

The Sweet Spot groups the original color and five complimentary colors.



42.5081, 37.9748, 32.6937



85.2163, 85.8964, 88.4695



47.3374, 38.6341, 62.0471



17.9226, 17.9298, 18.2795



0.0000, 0.0000, 0.0000



20.3446, 21.4041, 23.3091

Same Dimension

The Same Dimension uses a secret algorithm to generate beautiful new colors.



42.5081, 37.9748, 32.6937



63.0574, 53.9188, 43.0402



47.9184, 48.7954, 34.4971



11.8856, 11.9618, 12.2945



16.3669, 8.6667, 0.8102



0.9428, 0.5400, 0.0545

Inverse Universe

The Inverse Universe completely reimagines the original color for something new.



44.7729, 53.4670, 67.6349



67.1920, 82.2369, 106.9397



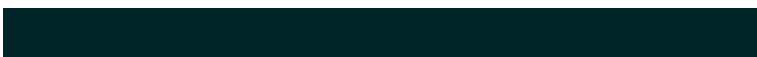
38.4449, 40.8111, 65.5256



12.0720, 13.2342, 15.1618



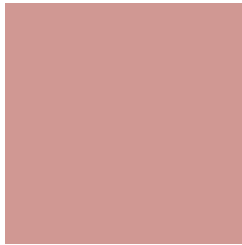
18.7329, 26.1125, 41.2454



1.0725, 1.5102, 2.3145

Previews

White Background



This preview shows how the XYZ color 42.5071, 37.9730, 32.6929 looks on a white background.

Color Contrast Check

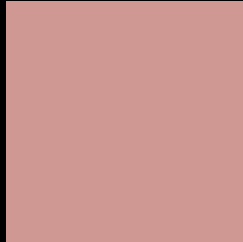
Large Text (above 18pt) WCAG AA × Fail

Any Text WCAG AA × Fail

Large Text (above 18pt) WCAG AAA × Fail

Any Text WCAG AAA × Fail

Black Background



This preview shows how the XYZ color 42.5071, 37.9730, 32.6929 looks on a black background.

Color Contrast Check

Large Text (above 18pt) WCAG AA ✓ Pass

Any Text WCAG AA ✓ Pass

Large Text (above 18pt) WCAG AAA ✓ Pass

Any Text WCAG AAA ✓ Pass

If you want to check with other color combinations, try the [Color Contrast Checker](#).

XYZ 42.5071, 37.9730, 32.6929

Background



This preview shows how black text looks on a background with the XYZ color 42.5071, 37.9730, 32.6929.



This preview shows how white text looks on a background with the XYZ color 42.5071, 37.9730,

32.6929.

Color Blindness Simulation

Color vision deficiency is a very complex topic, and I could not describe the different causes any better than Wikipedia does, so if you want to learn more, you should check out their [article about color blindness](#).

Dichromacy



Original Color

42.5071, 37.9730, 32.6929

Protanopia

36.3011, 38.0140, 35.9960

Deuteranopia

38.7454, 38.0358, 32.4937



Tritanopia

43.9177, 38.0875, 38.7551

Trichromacy



Original Color

42.5071, 37.9730, 32.6929

Protanomaly

38.1643, 37.6903, 34.5416

Deuteranomaly

40.0102, 37.9250, 32.4056

Tritanomaly

43.3619, 38.0888, 36.5190

Monochromacy



Original Color

42.5071, 37.9730, 32.6929

Achromatopsia

37.2190, 39.1572, 42.6422

Achromatomaly

38.7939, 38.4460, 38.6339

CSS Examples

Text

The CSS property to change the color of the text to XYZ 42.5071, 37.9730, 32.6929 is called "color". The color property can be set on classes, ids or directly on the HTML element.

This example shows how text in the color `rgb(208, 152, 147)` looks like.

```
.text, #text, p{  
    color:rgb(208, 152, 147)  
}
```

If you want to add a text shadow in that color use the text-shadow property, you can generate a text shadow directly with our [CSS Text Shadow Generator](#).

Here you see how black text with a 4 pixel rgb(208, 152, 147) colored shadow looks like.

```
.shadow{ text-shadow: 4px 4px 2px rgb(208, 152, 147) }
```

Border

The CSS property to change the border of an element to XYZ 42.5071, 37.9730, 32.6929 is called "border". The border property can be set on classes, ids or directly on the HTML element.

This example shows the color as border, it can be applied via the CSS property "border" or "border-color".

```
.border, #border, table{ border:4px solid rgb(208, 152, 147) }
```


If only the border color should be changed use the property `border-color`.

```
.border{ border-color:rgb(208, 152, 147) }
```

If you want to add a box shadow in that color use:

Here you see how a box with a 4 pixel `rgb(208, 152, 147)` colored shadow looks like.

```
.boxshadow{ -moz-box-shadow:4px 4px 4px  
4px rgb(208, 152, 147); -webkit-box-  
shadow:4px 4px 4px 4px rgb(208, 152, 147);  
box-shadow:4px 4px 4px 4px rgb(208, 152,  
147) }
```

Background

The CSS property to change the background color of an element to XYZ 42.5071, 37.9730, 32.6929 is called "background". The background property can be set on classes, ids or directly on the HTML element.

```
.background, #background, body{  
background: rgb(208, 152, 147) }
```

If only the background color should be changed can be used:

```
.background{ background-color: rgb(208,  
152, 147) }
```

This example shows the color as background, it is applied via the CSS property "background".

To optimize and compress your CSS code, you can use our [online CSS compressor and optimizer](#) based on csstidy. If you want to create a linear or radial gradient as background or border, check our [CSS Gradient Generator](#).

Hey! You found this booklet interesting? Support Converting Colors with the new Membership Option!

The pro membership hides all ads, plus gives you double the colors in the color bucket, and more awesome pro features!

[Learn more, Memberships starting at \\$2.50/m!](#)

**Follow me
on Twitter!**

@ConvertingColor