

Converting Colors

XYZ(42.3181, 38.3133, 36.5482)

Have a look what the booklet for
XYZ(42.3181, 38.3133, 36.5482)
contains.

| | |
|--|----|
| XYZ(42.1850, 38.2080, 36.6040) | 3 |
| <i>Conversions</i> | 4 |
| <i>Details</i> | 6 |
| <i>Harmonies</i> | 12 |
| <i>Previews</i> | 24 |
| <i>Color Blindness Simulation</i> | 28 |
| <i>CSS Examples</i> | 31 |

Color

**XYZ(42.1850, 38.2080,
36.6040)**

Conversions

Conversions Part 1

| Format | Color |
|---------------|----------------------------|
| Hex | CB9A9C |
| RGB | 203, 154, 156 |
| RGB Percent | 80%, 60%, 61% |
| CMY | 0.2039, 0.3961, 0.3882 |
| CMYK | 0.00, 0.24, 0.23, 0.20 |
| HSL | 358°, 32%, 70% |
| HSV | 358°, 24%, 80% |
| XYZ | 42.1850, 38.2080, 36.6040 |
| YIQ | 168.8790, 28.5620, 11.0100 |

Conversions

Conversions Part 2

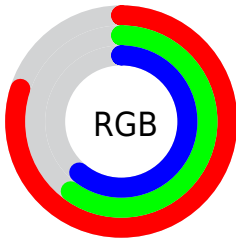
| Format | Color |
|-------------------------------------|-------------------------------|
| R_{YB} | 203, 154, 156 |
| Decimal | 13343388 |
| CIE _{Lab} | 68.17, 18.58, 6.06 |
| CIE _{LCh} | 68, 19.543, 18.069 |
| Yxy | 38.2080, 0.3606, 0.3266 |
| Android (android.graphics.Color) | 4291533468 (0xFFCB9A9C) |
| YUV | 168.8790, -6.3493, 29.9241 |
| Hunter-Lab | 61.8126, 13.6481, 8.1587 |

Details

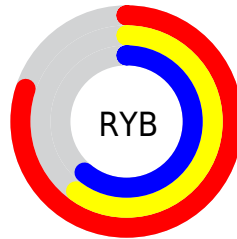
The XYZ color **42.1850, 38.2080, 36.6040** is a light color, and the websafe version is hex **CC9999**. A complement of this color would be **45.2266, 53.7999, 63.2618**, and the grayscale version is **37.6736, 39.6356, 43.1632**.

A 20% lighter version of the original color is **75.6733, 71.5141, 70.7879**, and **19.6128, 17.0163, 15.6154** is the 20% darker color. If you saturate the color by 10%, you get **37.5947, 31.4579, 27.5804**, and if you desaturate by 10%, it is **47.6084, 46.2005, 47.2104**.

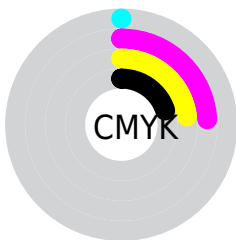
Distribution



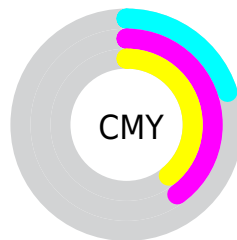
- Red (80%)
- Green (60%)
- Blue (61%)



- Red (80%)
- Yellow (60%)
- Blue (61%)



- Cyan (0%)
- Magenta (24%)
- Yellow (23%)
- Black (20%)



- Cyan (20%)
- Magenta (40%)
- Yellow (39%)

Brightness & Saturation Gradients

These gradients show how the XYZ color 42.1850, 38.2080, 36.6040 changes by changing the brightness by 10 percent. The first figure shows a shift by +10% for each color and the second figure -10%.

Similar to the brightness gradients but the following saturation gradients show a change of the XYZ color 42.1850, 38.2080, 36.6040 by changing the saturation by 10% instead.

■ 42.1850, 38.2080,
36.6040

■ 42.1850, 38.2080,
36.6040

346.2279,
338.5114, 346.7098

■ 29.4379, 26.1442,
24.6077

■ 77.7429, 72.4268,
71.1428

■ 19.5583, 16.9315,
15.5686

■ 101.2845, 95.3506,
94.5224

■ 12.1808, 10.1857,
9.0684

129.1550,
122.6632, 122.5334

■ 6.9400, 5.5222,
4.6884

161.7197,
154.7489, 155.5945

■ 3.4706, 2.5568,
2.0101

199.3439,
191.9922, 194.1241

■ 1.4072, 0.9050,
0.5615

242.3932,

■ 0.2614, 0.0000,

234.7775, 238.5408

0.0000

291.2327,
283.4890, 289.2632

0.0000, 0.0000,
0.0000

42.1850, 38.2080,
36.6040

42.1850, 38.2080,
36.6040

37.5947, 31.4579,
27.5804

47.6084, 46.2005,
47.2104

33.7933, 25.8830,
20.0615

53.8999, 55.4878,
59.4678

30.7373, 21.4177,
13.9661

61.0964, 66.1257,
73.4434

28.3776, 17.9877,
9.2046

69.2318, 78.1652,
89.1999

26.6594, 15.5099,
5.6770

78.1768, 91.3318,
106.7430

■ 25.5197, 13.8882,
3.2693

■ 78.4388, 91.4366,
108.1226

■ 24.8826, 13.0066,
1.8465

■ 24.6741, 12.7147,
1.3912

Harmonies

Analogous

The Analogous color harmony consists of three colors that are next to each other on the color wheel.



42.3650, 38.2080, 45.1741



42.1850, 38.2080, 36.6040



40.3798, 38.2080, 30.3097

Triad

The Triadic color harmony groups three colors that are evenly spaced from another and form a triangle on the color wheel.



42.1850, 38.2080, 36.6040



32.1224, 38.2080, 31.3517



35.1158, 38.2080, 60.3069

Complementary

The Complementary color scheme is a pair of colors which are on the opposite of each other on the color wheel.



42.1850, 38.2080, 36.6040



45.2266, 53.7999, 63.2618

Split Complementary

Split-complementary colors differ from the complementary color scheme. The scheme consists of three colors, the original color and two neighbors of the complement color.



32.5336, 38.2080, 55.3995



42.1850, 38.2080, 36.6040



30.8713, 38.2080, 38.2234

Square

The Square scheme is like the rectangle color scheme, but the four colors are evenly spaced on the color wheel.



42.1850, 38.2080, 36.6040



34.5257, 38.2080, 27.5826



31.0175, 38.2080, 47.0355



38.1663, 38.2080, 59.7122

Rectangle

The Rectangle color scheme consists of four colors that form a rectangle on the color wheel.



42.1850, 38.2080, 36.6040



38.5517, 38.2080, 27.8782



31.0175, 38.2080, 47.0355



34.1676, 38.2080, 59.2207

Sweetspot

The Sweet Spot groups the original color and five complimentary colors.



42.1860, 38.2098, 36.6048



86.9822, 88.0811, 93.2113



46.3028, 39.7800, 61.7382



18.4765, 18.6444, 19.6760



0.0000, 0.0000, 0.0000



20.3446, 21.4041, 23.3091

Same Dimension

The Same Dimension uses a secret algorithm to generate beautiful new colors.



42.1860, 38.2098, 36.6048



66.4324, 57.7914, 53.0355



45.9977, 46.1013, 37.0481



11.2305, 11.2209, 11.7486



15.7105, 8.0948, 0.9283



0.8171, 0.4203, 0.0828

Inverse Universe

The Inverse Universe completely reimagines the original color for something new.



42.1860, 38.2098, 36.6048



66.4324, 57.7914, 53.0355



40.6212, 44.2108, 62.8929



11.2305, 11.2209, 11.7486



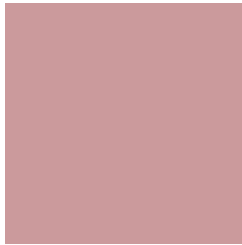
15.7105, 8.0948, 0.9283



0.8171, 0.4203, 0.0828

Previews

White Background



This preview shows how the XYZ color 42.1850, 38.2080, 36.6040 looks on a white background.

Color Contrast Check

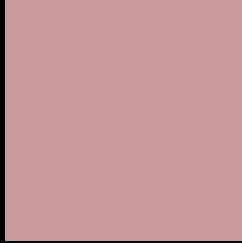
Large Text (above 18pt) WCAG AA × Fail

Any Text WCAG AA × Fail

Large Text (above 18pt) WCAG AAA × Fail

Any Text WCAG AAA × Fail

Black Background



This preview shows how the XYZ color 42.1850, 38.2080, 36.6040 looks on a black background.

Color Contrast Check

Large Text (above 18pt) WCAG AA ✓ Pass

Any Text WCAG AA ✓ Pass

Large Text (above 18pt) WCAG AAA ✓ Pass

Any Text WCAG AAA ✓ Pass

If you want to check with other color combinations, try the [Color Contrast Checker](#).

XYZ 42.1850, 38.2080, 36.6040

Background



This preview shows how black text looks on a background with the XYZ color 42.1850, 38.2080, 36.6040.



This preview shows how white text looks on a background with the XYZ color 42.1850, 38.2080,

Color Blindness Simulation

Color vision deficiency is a very complex topic, and I could not describe the different causes any better than Wikipedia does, so if you want to learn more, you should check out their [article about color blindness](#).

Dichromacy



Original Color

42.1850, 38.2080, 36.6040

Protanopia

36.7354, 38.4271, 39.6634

Deuteranopia

39.1548, 38.4211, 36.3627



Tritanopia

42.9939, 38.3002, 40.2486

Trichromacy



Original Color

42.1850, 38.2080, 36.6040

Protanomaly

38.5569, 38.3238, 38.6228

Deuteranomaly

40.1356, 38.1577, 36.2602

Tritanomaly

42.7261, 38.1930, 38.8383

Monochromacy



Original Color

42.1850, 38.2080, 36.6040

Achromatopsia

37.7116, 39.6755, 43.2066

Achromatomaly

39.0324, 39.0550, 40.6031

CSS Examples

Text

The CSS property to change the color of the text to XYZ 42.1850, 38.2080, 36.6040 is called "color". The color property can be set on classes, ids or directly on the HTML element.

This example shows how text in the color `rgb(203, 154, 156)` looks like.

```
.text, #text, p{  
    color:rgb(203, 154, 156)  
}
```

If you want to add a text shadow in that color use the text-shadow property, you can generate a text shadow directly with our [CSS Text Shadow Generator](#).

Here you see how black text with a 4 pixel rgb(203, 154, 156) colored shadow looks like.

```
.shadow{ text-shadow: 4px 4px 2px rgb(203, 154, 156) }
```

Border

The CSS property to change the border of an element to XYZ 42.1850, 38.2080, 36.6040 is called "border". The border property can be set on classes, ids or directly on the HTML element.

This example shows the color as border, it can be applied via the CSS property "border" or "border-color".

```
.border, #border, table{ border:4px solid rgb(203, 154, 156) }
```


If only the border color should be changed use the property `border-color`.

```
.border{ border-color:rgb(203, 154, 156) }
```

If you want to add a box shadow in that color use:

Here you see how a box with a 4 pixel `rgb(203, 154, 156)` colored shadow looks like.

```
.boxshadow{ -moz-box-shadow:4px 4px 4px  
4px rgb(203, 154, 156); -webkit-box-  
shadow:4px 4px 4px 4px rgb(203, 154, 156);  
box-shadow:4px 4px 4px 4px rgb(203, 154,  
156) }
```

Background

The CSS property to change the background color of an element to XYZ 42.1850, 38.2080, 36.6040 is called "background". The background property can be set on classes, ids or directly on the HTML element.

```
.background, #background, body{  
background: rgb(203, 154, 156) }
```

If only the background color should be changed can be used:

```
.background{ background-color: rgb(203,  
154, 156) }
```

This example shows the color as background, it is applied via the CSS property "background".

To optimize and compress your CSS code, you can use our [online CSS compressor and optimizer](#) based on csstidy. If you want to create a linear or radial gradient as background or border, check our [CSS Gradient Generator](#).

Hey! You found this booklet interesting? Support Converting Colors with the new Membership Option!

The pro membership hides all ads, plus gives you double the colors in the color bucket, and more awesome pro features!

[Learn more, Memberships starting at \\$2.50/m!](#)

**Follow me
on Twitter!**

@ConvertingColor