

Converting Colors

XYZ(42.3530, 40.2737, 39.1216)

Have a look what the booklet for
XYZ(42.3530, 40.2737, 39.1216)
contains.

XYZ(42.3793, 40.2842, 39.2602)	3
<i>Conversions</i>	4
<i>Details</i>	6
<i>Harmonies</i>	12
<i>Previews</i>	24
<i>Color Blindness Simulation</i>	28
<i>CSS Examples</i>	31

Color

**XYZ(42.3793, 40.2842,
39.2602)**

Conversions

Conversions Part 1

Format	Color
Hex	C5A2A1
RGB	197, 162, 161
RGB Percent	77%, 64%, 63%
CMY	0.2274, 0.3647, 0.3686
CMYK	0.00, 0.18, 0.18, 0.23
HSL	2°, 24%, 70%
HSV	2°, 18%, 77%
XYZ	42.3793, 40.2842, 39.2602
YIQ	172.3510, 21.1810, 7.1090

Conversions

Conversions Part 2

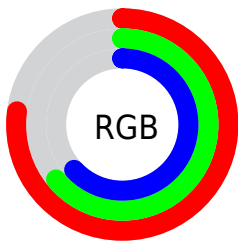
Format	Color
R_{YB}	197, 162, 161
Decimal	12952225
CIE _{Lab}	69.67, 12.71, 5.36
CIE _{LCh}	70, 13.791, 22.864
Yxy	40.2842, 0.3476, 0.3304
Android (android.graphics.Color)	4291142305 (0xFFC5A2A1)
YUV	172.3510, -5.5960, 21.6172
Hunter-Lab	63.4698, 8.1136, 7.7542

Details

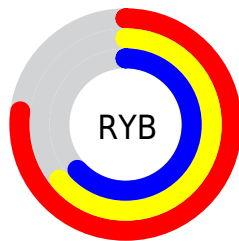
The XYZ color **42.3793, 40.2842, 39.2602** is a light color, and the websafe version is hex **CC9999**. A complement of this color would be **44.5155, 51.0868, 60.3381**, and the grayscale version is **39.4114, 41.4638, 45.1541**.

A 20% lighter version of the original color is **78.0806, 75.6544, 75.4532**, and **19.7181, 18.1173, 17.2096** is the 20% darker color. If you saturate the color by 10%, you get **37.6568, 33.4036, 29.7797**, and if you desaturate by 10%, it is **47.8915, 48.3054, 50.3552**.

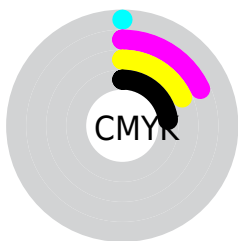
Distribution



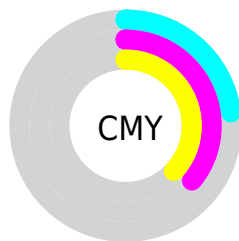
- Red (77%)
- Green (64%)
- Blue (63%)



- Red (77%)
- Yellow (64%)
- Blue (63%)



- Cyan (0%)
- Magenta (18%)
- Yellow (18%)
- Black (23%)





- Cyan (23%)
- Magenta (36%)
- Yellow (37%)

Brightness & Saturation Gradients


These gradients show how the XYZ color 42.3793, 40.2842, 39.2602 changes by changing the brightness by 10 percent. The first figure shows a shift by +10% for each color and the second figure -10%.


Similar to the brightness gradients but the following saturation gradients show a change of the XYZ color 42.3793, 40.2842, 39.2602 by changing the saturation by 10% instead.

 42.3793, 40.2842,
39.2602

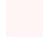
 42.3793, 40.2842,
39.2602


347.0178,
347.3200, 358.4544

 29.5908, 27.7602,
26.6528


 78.0349, 75.5961,
75.2604

 19.6747, 18.1450,
17.0825


 101.6328, 99.1528,
99.4902

 12.2657, 11.0541,
10.1308


129.5645,
127.1558, 128.4313

 6.9984, 6.1032,
5.3790

162.1953,
159.9896, 162.5022

 3.5074, 2.9080,
2.4087

199.8907,
198.0385, 202.1214

 1.4274, 1.0839,
0.7912

243.0161,

 0.2756, 0.0000,

241.6869, 247.7075

0.0000

291.9366,
291.3193, 299.6790

■ 0.0000, 0.0000,
0.0000

■ 42.3793, 40.2842,
39.2602

■ 42.3793, 40.2842,
39.2602

■ 37.6568, 33.4036,
29.7797

■ 47.8915, 48.3054,
50.3552

■ 33.6848, 27.6067,
21.8363

■ 54.2237, 57.5099,
63.1324

■ 30.4256, 22.8400,
15.3496

■ 61.4087, 67.9450,
77.6586

■ 27.8370, 19.0431,
10.2313

■ 69.4766, 79.6535,
93.9963

■ 25.8723, 16.1495,
6.3834

■ 76.8361, 90.6104,
108.0476

■ 24.4790, 14.0844,
3.6948

■ 23.5958, 12.7608,
2.0354

■ 23.1402, 12.0688,
1.2076

■ 23.0857, 11.9896,
1.0975

Harmonies

Analogous

The Analogous color harmony consists of three colors that are next to each other on the color wheel.



42.7052, 40.2842, 45.4067



42.3793, 40.2842, 39.2602



40.9376, 40.2842, 34.7793

Triad

The Triadic color harmony groups three colors that are evenly spaced from another and form a triangle on the color wheel.



42.3793, 40.2842, 39.2602



34.9699, 40.2842, 36.8558



37.7585, 40.2842, 57.2175

Complementary

The Complementary color scheme is a pair of colors which are on the opposite of each other on the color wheel.



42.3793, 40.2842, 39.2602



44.5155, 51.0868, 60.3381

Split Complementary

Split-complementary colors differ from the complementary color scheme. The scheme consists of three colors, the original color and two neighbors of the complement color.



35.7570, 40.2842, 54.4040



42.3793, 40.2842, 39.2602



34.1881, 40.2842, 42.3540

Square

The Square scheme is like the rectangle color scheme, but the four colors are evenly spaced on the color wheel.



42.3793, 40.2842, 39.2602



36.6462, 40.2842, 33.4881



34.4706, 40.2842, 48.8114



39.9800, 40.2842, 56.1850

Rectangle

The Rectangle color scheme consists of four colors that form a rectangle on the color wheel.



42.3793, 40.2842, 39.2602



39.5669, 40.2842, 33.1386



34.4706, 40.2842, 48.8114



37.0388, 40.2842, 56.6816

Sweetspot

The Sweet Spot groups the original color and five complimentary colors.



42.3804, 40.2860, 39.2610



89.2373, 91.5511, 97.1692



45.7806, 41.3643, 58.0351



18.9322, 19.3511, 20.4589



0.0000, 0.0000, 0.0000



20.3446, 21.4041, 23.3091

Same Dimension

The Same Dimension uses a secret algorithm to generate beautiful new colors.



42.3804, 40.2860, 39.2610



72.2991, 66.9028, 63.0749



45.7000, 46.9252, 40.3676



10.6572, 10.6835, 11.0632



15.1946, 7.9064, 0.7252



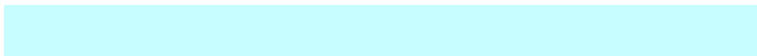
0.7279, 0.3913, 0.0372

Inverse Universe

The Inverse Universe completely reimagines the original color for something new.



44.5155, 51.0868, 60.3381



76.8397, 89.8745, 107.9054



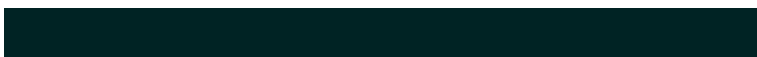
40.7765, 43.6090, 59.0918



10.9204, 12.0148, 13.6610



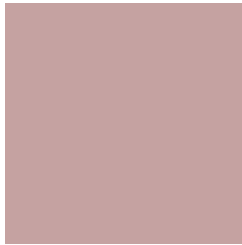
18.9668, 27.3274, 39.0194



0.9062, 1.3103, 1.8503

Previews

White Background



This preview shows how the XYZ color 42.3793, 40.2842, 39.2602 looks on a white background.

Color Contrast Check

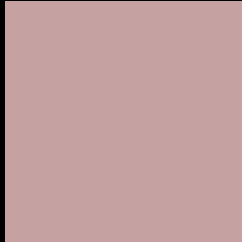
Large Text (above 18pt) WCAG AA × Fail

Any Text WCAG AA × Fail

Large Text (above 18pt) WCAG AAA × Fail

Any Text WCAG AAA × Fail

Black Background



This preview shows how the XYZ color 42.3793, 40.2842, 39.2602 looks on a black background.

Color Contrast Check

Large Text (above 18pt) WCAG AA ✓ Pass

Any Text WCAG AA ✓ Pass

Large Text (above 18pt) WCAG AAA ✓ Pass

Any Text WCAG AAA ✓ Pass

If you want to check with other color combinations, try the [Color Contrast Checker](#).

XYZ 42.3793, 40.2842, 39.2602

Background



This preview shows how black text looks on a background with the XYZ color 42.3793, 40.2842, 39.2602.



This preview shows how white text looks on a background with the XYZ color 42.3793, 40.2842,

Color Blindness Simulation

Color vision deficiency is a very complex topic, and I could not describe the different causes any better than Wikipedia does, so if you want to learn more, you should check out their [article about color blindness](#).

Dichromacy



Original Color

42.3793, 40.2842, 39.2602

Protanopia

38.8455, 40.5800, 41.3827

Deuteranopia

41.3740, 40.5598, 39.3664



Tritanopia

43.4023, 40.1645, 45.0001

Trichromacy



Original Color

42.3793, 40.2842, 39.2602

Protanomaly

40.0480, 40.3850, 40.8063

Deuteranomaly

41.7008, 40.4616, 39.3302

Tritanomaly

43.1950, 40.3601, 43.0498

Monochromacy



Original Color

42.3793, 40.2842, 39.2602

Achromatopsia

39.2122, 41.2543, 44.9259

Achromatomaly

40.1266, 40.6562, 42.7783

CSS Examples

Text

The CSS property to change the color of the text to XYZ 42.3793, 40.2842, 39.2602 is called "color". The color property can be set on classes, ids or directly on the HTML element.

This example shows how text in the color `rgb(197, 162, 161)` looks like.

```
.text, #text, p{  
    color:rgb(197, 162, 161)  
}
```

If you want to add a text shadow in that color use the text-shadow property, you can generate a text shadow directly with our [CSS Text Shadow Generator](#).

Here you see how black text with a 4 pixel rgb(197, 162, 161) colored shadow looks like.

```
.shadow{ text-shadow: 4px 4px 2px rgb(197, 162, 161) }
```

Border

The CSS property to change the border of an element to XYZ 42.3793, 40.2842, 39.2602 is called "border". The border property can be set on classes, ids or directly on the HTML element.

This example shows the color as border, it can be applied via the CSS property "border" or "border-color".

```
.border, #border, table{ border:4px solid rgb(197, 162, 161) }
```


If only the border color should be changed use the property `border-color`.

```
.border{ border-color:rgb(197, 162, 161) }
```

If you want to add a box shadow in that color use:

Here you see how a box with a 4 pixel `rgb(197, 162, 161)` colored shadow looks like.

```
.boxshadow{ -moz-box-shadow:4px 4px 4px  
4px rgb(197, 162, 161); -webkit-box-  
shadow:4px 4px 4px 4px rgb(197, 162, 161);  
box-shadow:4px 4px 4px 4px rgb(197, 162,  
161) }
```

Background

The CSS property to change the background color of an element to XYZ 42.3793, 40.2842, 39.2602 is called "background". The background property can be set on classes, ids or directly on the HTML element.

```
.background, #background, body{  
background: rgb(197, 162, 161) }
```

If only the background color should be changed can be used:

```
.background{ background-color: rgb(197,  
162, 161) }
```

This example shows the color as background, it is applied via the CSS property "background".

To optimize and compress your CSS code, you can use our [online CSS compressor and optimizer](#) based on csstidy. If you want to create a linear or radial gradient as background or border, check our [CSS Gradient Generator](#).

Hey! You found this booklet interesting? Support Converting Colors with the new Membership Option!

The pro membership hides all ads, plus gives you double the colors in the color bucket, and more awesome pro features!

[Learn more, Memberships starting at \\$2.50/m!](#)

**Follow me
on Twitter!**

@ConvertingColor