

Converting Colors

XYZ(42.3971, 39.9958, 37.0348)

Have a look what the booklet for
XYZ(42.3971, 39.9958, 37.0348)
contains.

XYZ(42.5650, 40.1694, 36.9625)	3
<i>Conversions</i>	4
<i>Details</i>	6
<i>Harmonies</i>	12
<i>Previews</i>	24
<i>Color Blindness Simulation</i>	28
<i>CSS Examples</i>	31

Color

**XYZ(42.5650, 40.1694,
36.9625)**

Conversions

Conversions Part 1

Format	Color
Hex	C8A19C
RGB	200, 161, 156
RGB Percent	78%, 63%, 61%
CMY	0.2157, 0.3686, 0.3882
CMYK	0.00, 0.19, 0.22, 0.22
HSL	7°, 29%, 70%
HSV	7°, 22%, 78%
XYZ	42.5650, 40.1694, 36.9625
YIQ	172.0910, 24.8490, 6.7130

Conversions

Conversions Part 2

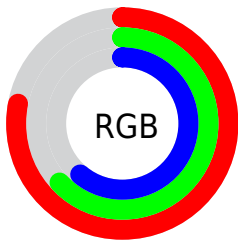
Format	Color
RYB	200, 162, 156
Decimal	13148572
CIELab	69.59, 13.62, 8.05
CIElCh	70, 15.818, 30.596
Yxy	40.1694, 0.3556, 0.3356
Android (android.graphics.Color)	4291338652 (0xFFC8A19C)
YUV	172.0910, -7.9329, 24.4762
Hunter-Lab	63.3793, 8.9652, 9.7879

Details

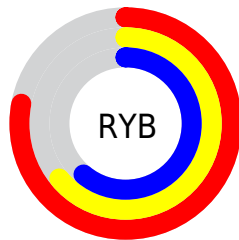
The XYZ color **42.5650, 40.1694, 36.9625** is a light color, and the websafe version is hex **CC9999**. A complement of this color would be **43.6502, 50.2668, 62.0456**, and the grayscale version is **39.2897, 41.3358, 45.0147**.

A 20% lighter version of the original color is **77.4287, 75.0249, 71.3731**, and **19.6955, 17.9769, 15.7964** is the 20% darker color. If you saturate the color by 10%, you get **38.1280, 33.7860, 27.8047**, and if you desaturate by 10%, it is **47.7222, 47.5463, 47.7370**.

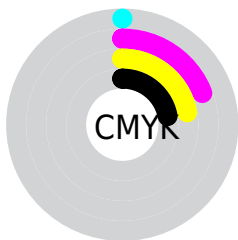
Distribution



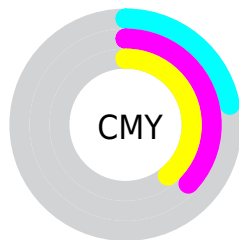
- Red (78%)
- Green (63%)
- Blue (61%)



- Red (78%)
- Yellow (64%)
- Blue (61%)



- Cyan (0%)
- Magenta (19%)
- Yellow (22%)
- Black (22%)




- Cyan (22%)
- Magenta (37%)
- Yellow (39%)

Brightness & Saturation Gradients


These gradients show how the XYZ color 42.5650, 40.1694, 36.9625 changes by changing the brightness by 10 percent. The first figure shows a shift by +10% for each color and the second figure -10%.


Similar to the brightness gradients but the following saturation gradients show a change of the XYZ color 42.5650, 40.1694, 36.9625 by changing the saturation by 10% instead.


 42.5650, 40.1694,
36.9625

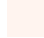
 42.5650, 40.1694,
36.9625


347.7717,
346.8370, 348.3119

 29.7370, 27.6706,
24.8829


 78.3138, 75.4214,
71.7008

 19.7861, 18.0775,
15.7716


 101.9654, 98.9434,
95.1966

 12.3470, 11.0057,
9.2101


129.9555,
126.9087, 123.3348

 7.0544, 6.0707,
4.7798

162.6495,
159.7016, 156.5340

 3.5428, 2.8881,
2.0622

200.4127,
197.7064, 195.2128

 1.4469, 1.0736,
0.5931

243.6106,

 0.2892, 0.0000,

241.3077, 239.7897

0.0000

292.6085,
290.8898, 290.6832

■ 0.0000, 0.0000,
0.0000

■ 42.5650, 40.1694,
36.9625

■ 42.5650, 40.1694,
36.9625

■ 38.1280, 33.7860,
27.8047

■ 47.7222, 47.5463,
47.7370

■ 34.3759, 28.3483,
20.1833

■ 53.6264, 55.9509,
60.1984

■ 31.2754, 23.8130,
14.0145

■ 60.3068, 65.4224,
74.4158

■ 28.7889, 20.1310,
9.2060

■ 67.7904, 75.9964,
90.4537

■ 26.8752, 17.2486,
5.6543

■ 75.9410, 87.6424,
107.5219

■ 25.4877, 15.1062,
3.2416

■ 77.6295, 91.0194,
108.0847

■ 24.5723, 13.6354,
1.8270

■ 24.1209, 12.8821,
1.2152

Harmonies

Analogous

The Analogous color harmony consists of three colors that are next to each other on the color wheel.



43.3041, 40.1694, 43.5916



42.5650, 40.1694, 36.9625



40.6420, 40.1694, 32.5934

Triad

The Triadic color harmony groups three colors that are evenly spaced from another and form a triangle on the color wheel.



42.5650, 40.1694, 36.9625



34.0593, 40.1694, 37.1894



38.2309, 40.1694, 59.3628

Complementary

The Complementary color scheme is a pair of colors which are on the opposite of each other on the color wheel.



42.5650, 40.1694, 36.9625



43.6502, 50.2668, 62.0456

Split Complementary

Split-complementary colors differ from the complementary color scheme. The scheme consists of three colors, the original color and two neighbors of the complement color.



35.8191, 40.1694, 57.1702



42.5650, 40.1694, 36.9625



33.4766, 40.1694, 43.8841

Square

The Square scheme is like the rectangle color scheme, but the four colors are evenly spaced on the color wheel.



42.5650, 40.1694, 36.9625



35.7344, 40.1694, 32.7138



34.1066, 40.1694, 51.2939



40.7343, 40.1694, 56.9956

Rectangle

The Rectangle color scheme consists of four colors that form a rectangle on the color wheel.



42.5650, 40.1694, 36.9625



38.9879, 40.1694, 31.2776



34.1066, 40.1694, 51.2939



37.3830, 40.1694, 59.1323

Sweetspot

The Sweet Spot groups the original color and five complimentary colors.



42.5661, 40.1712, 36.9633



87.4672, 89.2217, 92.8472



45.6265, 40.0241, 57.3070



18.5884, 18.9074, 19.5920



0.0000, 0.0000, 0.0000



20.3446, 21.4041, 23.3091

Same Dimension

The Same Dimension uses a secret algorithm to generate beautiful new colors.



42.5661, 40.1712, 36.9633



70.1869, 64.5094, 56.7259



46.6305, 48.3000, 38.3181



10.7294, 10.8279, 11.0873



15.3707, 8.2587, 0.7840



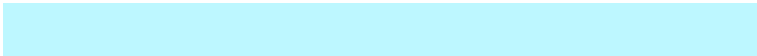
0.7612, 0.4578, 0.0483

Inverse Universe

The Inverse Universe completely reimagines the original color for something new.



43.6502, 50.2668, 62.0456



72.3635, 84.8036, 107.1625



39.1949, 41.3563, 60.5605



10.8398, 11.8536, 13.6341



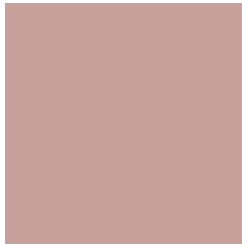
16.6992, 22.7924, 38.2636



0.8207, 1.1393, 1.8218

Previews

White Background



This preview shows how the XYZ color 42.5650, 40.1694, 36.9625 looks on a white background.

Color Contrast Check

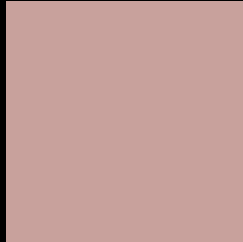
Large Text (above 18pt) WCAG AA × Fail

Any Text WCAG AA × Fail

Large Text (above 18pt) WCAG AAA × Fail

Any Text WCAG AAA × Fail

Black Background



This preview shows how the XYZ color 42.5650, 40.1694, 36.9625 looks on a black background.

Color Contrast Check

Large Text (above 18pt) WCAG AA ✓ Pass

Any Text WCAG AA ✓ Pass

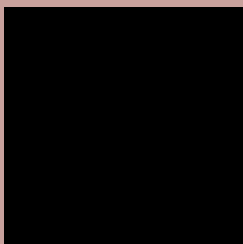
Large Text (above 18pt) WCAG AAA ✓ Pass

Any Text WCAG AAA ✓ Pass

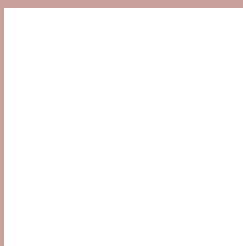
If you want to check with other color combinations, try the [Color Contrast Checker](#).

XYZ 42.5650, 40.1694, 36.9625

Background



This preview shows how black text looks on a background with the XYZ color 42.5650, 40.1694, 36.9625.



This preview shows how white text looks on a background with the XYZ color 42.5650, 40.1694,

Color Blindness Simulation

Color vision deficiency is a very complex topic, and I could not describe the different causes any better than Wikipedia does, so if you want to learn more, you should check out their [article about color blindness](#).

Dichromacy



Original Color

42.5650, 40.1694, 36.9625

Protanopia

38.7122, 40.5528, 39.5053

Deuteranopia

40.9301, 40.1239, 36.5978



Tritanopia

44.1059, 40.2931, 43.9808

Trichromacy



Original Color

42.5650, 40.1694, 36.9625

Protanomaly

40.0843, 40.4549, 38.4968

Deuteranomaly

41.5193, 40.1630, 36.5743

Tritanomaly

43.5411, 40.3123, 41.5626

Monochromacy



Original Color

42.5650, 40.1694, 36.9625

Achromatopsia

39.2122, 41.2543, 44.9259

Achromatomaly

40.1770, 40.7035, 41.8154

CSS Examples

Text

The CSS property to change the color of the text to XYZ 42.5650, 40.1694, 36.9625 is called "color". The color property can be set on classes, ids or directly on the HTML element.

This example shows how text in the color `rgb(200, 161, 156)` looks like.

```
.text, #text, p{  
    color:rgb(200, 161, 156)  
}
```

If you want to add a text shadow in that color use the text-shadow property, you can generate a text shadow directly with our [CSS Text Shadow Generator](#).

Here you see how black text with a 4 pixel rgb(200, 161, 156) colored shadow looks like.

```
.shadow{ text-shadow: 4px 4px 2px rgb(200, 161, 156) }
```

Border

The CSS property to change the border of an element to XYZ 42.5650, 40.1694, 36.9625 is called "border". The border property can be set on classes, ids or directly on the HTML element.

This example shows the color as border, it can be applied via the CSS property "border" or "border-color".

```
.border, #border, table{ border:4px solid rgb(200, 161, 156) }
```


If only the border color should be changed use the property `border-color`.

```
.border{ border-color:rgb(200, 161, 156) }
```

If you want to add a box shadow in that color use:

Here you see how a box with a 4 pixel `rgb(200, 161, 156)` colored shadow looks like.

```
.boxshadow{ -moz-box-shadow:4px 4px 4px  
4px rgb(200, 161, 156); -webkit-box-  
shadow:4px 4px 4px 4px rgb(200, 161, 156);  
box-shadow:4px 4px 4px 4px rgb(200, 161,  
156) }
```

Background

The CSS property to change the background color of an element to XYZ 42.5650, 40.1694, 36.9625 is called "background". The background property can be set on classes, ids or directly on the HTML element.

```
.background, #background, body{  
background: rgb(200, 161, 156) }
```

If only the background color should be changed can be used:

```
.background{ background-color: rgb(200,  
161, 156) }
```

This example shows the color as background, it is applied via the CSS property "background".

To optimize and compress your CSS code, you can use our [online CSS compressor and optimizer](#) based on csstidy. If you want to create a linear or radial gradient as background or border, check our [CSS Gradient Generator](#).

Hey! You found this booklet interesting? Support Converting Colors with the new Membership Option!

The pro membership hides all ads, plus gives you double the colors in the color bucket, and more awesome pro features!

[Learn more, Memberships starting at \\$2.50/m!](#)

**Follow me
on Twitter!**

@ConvertingColor