

# Converting Colors

XYZ(42.4055, 41.1832, 43.7788)

Have a look what the booklet for  
XYZ(42.4055, 41.1832, 43.7788)  
contains.

<b>XYZ(42.3778, 41.2511, 43.7589)</b> .....	3
<b><i>Conversions</i></b> .....	4
<b><i>Details</i></b> .....	6
<b><i>Harmonies</i></b> .....	12
<b><i>Previews</i></b> .....	24
<b><i>Color Blindness Simulation</i></b> .....	28
<b><i>CSS Examples</i></b> .....	31

# Color

**XYZ(42.3778, 41.2511,  
43.7589)**

# Conversions

## Conversions Part 1

Format	Color
Hex	BFA6AA
RGB	191, 166, 170
RGB Percent	75%, 65%, 67%
CMY	0.2510, 0.3490, 0.3333
CMYK	0.00, 0.13, 0.11, 0.25
HSL	350°, 16%, 70%
HSV	350°, 13%, 75%
XYZ	42.3778, 41.2511, 43.7589
YIQ	173.9310, 13.6160, 6.5440

# Conversions

## Conversions Part 2

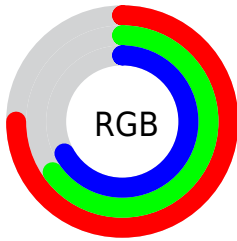
<b>Format</b>	<b>Color</b>
<b>RYB</b>	191, 166, 170
Decimal	12560042
CIELab	70.35, 9.77, 1.29
CIElCh	70, 9.856, 7.514
Yxy	41.2511, 0.3327, 0.3238
Android (android.graphics.Color)	4290750122 (0xFFBFA6AA)
YUV	173.9310, -1.9380, 14.9695
Hunter-Lab	64.2270, 5.3793, 4.5637

# Details

The XYZ color **42.3778, 41.2511, 43.7589** is a light color, and the websafe version is hex **CC9999**. A complement of this color would be **43.3280, 48.9575, 54.1823**, and the grayscale version is **40.2024, 42.2961, 46.0604**.

A 20% lighter version of the original color is **78.1585, 77.1056, 81.9976**, and **19.6039, 18.6610, 19.7082** is the 20% darker color. If you saturate the color by 10%, you get **37.7339, 34.2458, 35.1734**, and if you desaturate by 10%, it is **47.7249, 49.3654, 53.4939**.

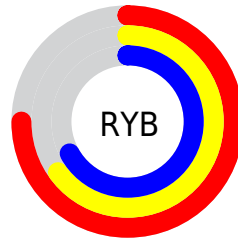
# Distribution



Red (75%)

Green (65%)

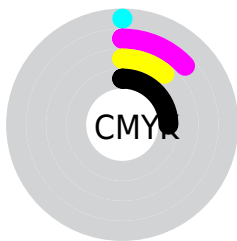
Blue (67%)



Red (75%)

Yellow (65%)

Blue (67%)

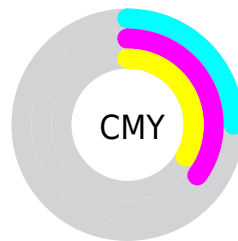


Cyan (0%)

Magenta (13%)

Yellow (11%)

Black (25%)



Cyan (25%)

Magenta (35%)


Yellow (33%)


# Brightness & Saturation Gradients

These gradients show how the XYZ color 42.3778, 41.2511, 43.7589 changes by changing the brightness by 10 percent. The first figure shows a shift by +10% for each color and the second figure -10%.


Similar to the brightness gradients but the following saturation gradients show a change of the XYZ color 42.3778, 41.2511, 43.7589 by changing the saturation by 10% instead.





 42.3778, 41.2511,  
43.7589


 42.3778, 41.2511,  
43.7589


347.0117,  
351.3690, 377.7360

 29.5896, 28.5153,  
30.1452


 78.0327, 77.0649,  
82.1534

 19.6738, 18.7145,  
19.6958


 101.6301,  
100.9118, 107.7713

 12.2651, 11.4642,  
11.9923

129.5613,  
129.2311, 138.2277

 6.9979, 6.3799,  
6.6159

162.1917,  
162.4074, 173.9412

 3.5071, 3.0775,  
3.1483

199.8865,  
200.8249, 215.3302

 1.4273, 1.1723,  
1.1709

243.0113,

 0.2755, 0.0389,

244.8680, 262.8133

0.0000

291.9312,  
294.9213, 316.8091

■ 0.0000, 0.0000,  
0.0000

■ 42.3778, 41.2511,  
43.7589

■ 42.3778, 41.2511,  
43.7589

■ 37.7339, 34.2458,  
35.1734

■ 47.7249, 49.3654,  
53.4939

■ 33.7606, 28.2962,  
27.6924

■ 53.7994, 58.6284,  
64.4162

■ 30.4276, 23.3525,  
21.2714

■ 60.6285, 69.0842,  
76.5649

■ 27.7009, 19.3590,  
15.8622

■ 68.2370, 80.7733,  
89.9767

■ 25.5436, 16.2544,  
11.4127

■ 74.5379, 89.5132,  
103.9830

■ 23.9144, 13.9703,  
7.8659

■ 75.2961, 89.8165,  
107.9755

■ 22.7664, 12.4282,  
5.1590

■ 22.0440, 11.5341,  
3.2205

■ 21.7274, 11.1730,  
2.2761

# Harmonies

## Analogous

The Analogous color harmony consists of three colors that are next to each other on the color wheel.



42.1570, 41.2511, 48.4143



42.3778, 41.2511, 43.7589



41.7309, 41.2511, 39.6992

# Triad

The Triadic color harmony groups three colors that are evenly spaced from another and form a triangle on the color wheel.



42.3778, 41.2511, 43.7589



37.3415, 41.2511, 38.2046



38.0287, 41.2511, 53.6724

# Complementary

The Complementary color scheme is a pair of colors which are on the opposite of each other on the color wheel.



42.3778, 41.2511, 43.7589



43.3280, 48.9575, 54.1823

# Split Complementary

Split-complementary colors differ from the complementary color scheme. The scheme consists of three colors, the original color and two neighbors of the complement color.



36.7888, 41.2511, 50.5697



42.3778, 41.2511, 43.7589



36.3997, 41.2511, 41.5894

# Square

The Square scheme is like the rectangle color scheme, but the four colors are evenly spaced on the color wheel.



42.3778, 41.2511, 43.7589



38.8020, 41.2511, 36.6392



36.2002, 41.2511, 46.0922



39.6167, 41.2511, 54.3527



# Rectangle

The Rectangle color scheme consists of four colors that form a rectangle on the color wheel.



42.3778, 41.2511, 43.7589



40.9048, 41.2511, 37.8030



36.2002, 41.2511, 46.0922



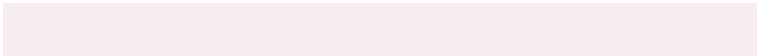
37.5587, 41.2511, 52.8683

# Sweetspot

The Sweet Spot groups the original color and five complimentary colors.



42.3790, 41.2529, 43.7598



84.4833, 86.9049, 94.0123



43.4943, 41.5797, 55.0240



18.3837, 18.8280, 20.3397



92.9021, 97.7402, 106.4391



19.4759, 20.4902, 22.3138



# Same Dimension

The Same Dimension uses a secret algorithm to generate beautiful new colors.



42.3790, 41.2529, 43.7598



73.1327, 69.6997, 73.2852



43.5706, 44.2322, 42.3199



9.5907, 9.5606, 10.2337



14.2987, 7.3506, 1.6007



0.5799, 0.2959, 0.1670



# Inverse Universe

The Inverse Universe completely reimagines the original color for something new.



42.3790, 41.2529, 43.7598



73.1327, 69.6997, 73.2852



41.9962, 45.5996, 55.8789



9.5907, 9.5606, 10.2337



14.2987, 7.3506, 1.6007

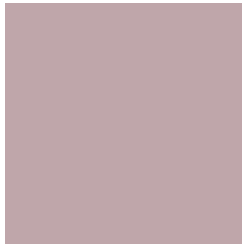


0.5799, 0.2959, 0.1670



# Previews

## White Background



This preview shows how the XYZ color 42.3778, 41.2511, 43.7589 looks on a white background.

## Color Contrast Check

Large Text (above 18pt) WCAG AA × Fail

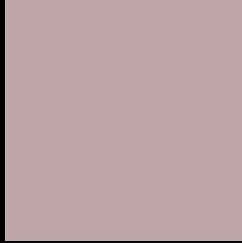
Any Text WCAG AA × Fail

Large Text (above 18pt) WCAG AAA × Fail

Any Text WCAG AAA × Fail



# Black Background



This preview shows how the XYZ color 42.3778, 41.2511, 43.7589 looks on a black background.

## Color Contrast Check

Large Text (above 18pt) WCAG AA ✓ Pass

Any Text WCAG AA ✓ Pass

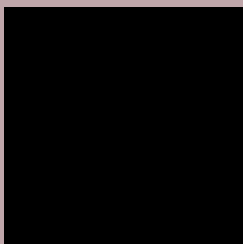
Large Text (above 18pt) WCAG AAA ✓ Pass

Any Text WCAG AAA ✓ Pass

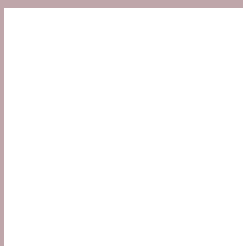
If you want to check with other color combinations, try the [Color Contrast Checker](#).

**XYZ 42.3778, 41.2511, 43.7589**

## **Background**



This preview shows how black text looks on a background with the XYZ color 42.3778, 41.2511, 43.7589.



This preview shows how white text looks on a background with the XYZ color 42.3778, 41.2511,



# Color Blindness Simulation

Color vision deficiency is a very complex topic, and I could not describe the different causes any better than Wikipedia does, so if you want to learn more, you should check out their [article about color blindness](#).

## Dichromacy



### Original Color

42.3778, 41.2511, 43.7589

### Protanopia

39.7849, 41.2569, 45.4017

### Deuteranopia

42.3096, 41.4869, 43.8080



## Tritanopia

43.2292, 41.3311, 47.8188

# Trichromacy



## Original Color

42.3778, 41.2511, 43.7589

## Protanomaly

40.6904, 41.1782, 44.8333

## Deuteranomaly

42.3096, 41.4869, 43.8080

## Tritanomaly

42.9312, 41.2119, 46.2494

# Monochromacy



## Original Color

42.3778, 41.2511, 43.7589

## Achromatopsia

40.2316, 42.3268, 46.0938

## Achromatomaly

40.9281, 41.8462, 45.4552

# CSS Examples

## Text

The CSS property to change the color of the text to XYZ 42.3778, 41.2511, 43.7589 is called "color". The color property can be set on classes, ids or directly on the HTML element.

This example shows how text in the color `rgb(191, 166, 170)` looks like.

```
.text, #text, p{  
    color:rgb(191, 166, 170)  
}
```

If you want to add a text shadow in that color use the text-shadow property, you can generate a text shadow directly with our [CSS Text Shadow Generator](#).

Here you see how black text with a 4 pixel rgb(191, 166, 170) colored shadow looks like.

```
.shadow{ text-shadow: 4px 4px 2px rgb(191, 166, 170) }
```

## Border

The CSS property to change the border of an element to XYZ 42.3778, 41.2511, 43.7589 is called "border". The border property can be set on classes, ids or directly on the HTML element.

This example shows the color as border, it can be applied via the CSS property "border" or "border-color".

```
.border, #border, table{ border:4px solid rgb(191, 166, 170) }
```



If only the border color should be changed use the property `border-color`.

```
.border{ border-color:rgb(191, 166, 170) }
```

If you want to add a box shadow in that color use:

Here you see how a box with a 4 pixel `rgb(191, 166, 170)` colored shadow looks like.

```
.boxshadow{ -moz-box-shadow:4px 4px 4px  
4px rgb(191, 166, 170); -webkit-box-  
shadow:4px 4px 4px 4px rgb(191, 166, 170);  
box-shadow:4px 4px 4px 4px rgb(191, 166,  
170) }
```

# Background

The CSS property to change the background color of an element to XYZ 42.3778, 41.2511, 43.7589 is called "background". The background property can be set on classes, ids or directly on the HTML element.

```
.background, #background, body{  
background: rgb(191, 166, 170) }
```

If only the background color should be changed can be used:

```
.background{ background-color: rgb(191,  
166, 170) }
```

This example shows the color as background, it is applied via the CSS property "background".

To optimize and compress your CSS code, you can use our [online CSS compressor and optimizer](#) based on csstidy. If you want to create a linear or radial gradient as background or border, check our [CSS Gradient Generator](#).

Hey! You found this booklet interesting? Support Converting Colors with the new Membership Option!

The pro membership hides all ads, plus gives you double the colors in the color bucket, and more awesome pro features!

**[Learn more, Memberships starting at \\$2.50/m!](#)**

**Follow me  
on Twitter!**

@ConvertingColor