

Converting Colors

XYZ(42.4441, 40.6308, 43.0187)

Have a look what the booklet for
XYZ(42.4441, 40.6308, 43.0187)
contains.

XYZ(42.6850, 40.8848, 43.1779)	3
<i>Conversions</i>	4
<i>Details</i>	6
<i>Harmonies</i>	12
<i>Previews</i>	24
<i>Color Blindness Simulation</i>	28
<i>CSS Examples</i>	31

Color

**XYZ(42.6850, 40.8848,
43.1779)**

Conversions

Conversions Part 1

Format	Color
Hex	C2A4A9
RGB	194, 164, 169
RGB Percent	76%, 64%, 66%
CMY	0.2392, 0.3568, 0.3373
CMYK	0.00, 0.15, 0.13, 0.24
HSL	350°, 20%, 70%
HSV	350°, 15%, 76%
XYZ	42.6850, 40.8848, 43.1779
YIQ	173.5400, 16.2750, 7.9150

Conversions

Conversions Part 2

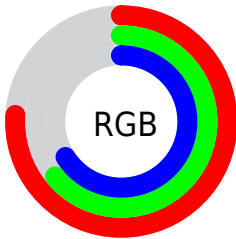
Format	Color
RYB	194, 164, 169
Decimal	12756137
CIELab	70.10, 11.80, 1.50
CIElCh	70, 11.893, 7.261
Yxy	40.8848, 0.3368, 0.3226
Android (android.graphics.Color)	4290946217 (0xFFC2A4A9)
YUV	173.5400, -2.2382, 17.9434
Hunter-Lab	63.9412, 7.2634, 4.7218

Details

The XYZ color **42.6850, 40.8848, 43.1779** is a light color, and the websafe version is hex **CC9999**. A complement of this color would be **43.7885, 50.1512, 55.5188**, and the grayscale version is **40.0025, 42.0857, 45.8313**.

A 20% lighter version of the original color is **78.5697, 76.5541, 81.1564**, and **19.8203, 18.4481, 19.3458** is the 20% darker color. If you saturate the color by 10%, you get **38.0493, 33.8940, 34.6013**, and if you desaturate by 10%, it is **48.0403, 49.0136, 52.9215**.

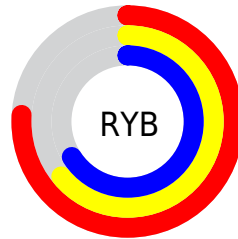
Distribution



Red (76%)

Green (64%)

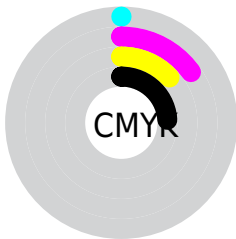
Blue (66%)



Red (76%)

Yellow (64%)

Blue (66%)

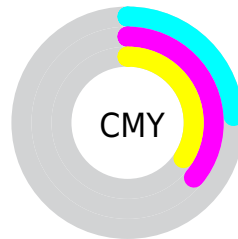


Cyan (0%)

Magenta (15%)

Yellow (13%)

Black (24%)



Cyan (24%)


Magenta (36%)


Yellow (34%)

Brightness & Saturation Gradients


These gradients show how the XYZ color 42.6850, 40.8848, 43.1779 changes by changing the brightness by 10 percent. The first figure shows a shift by +10% for each color and the second figure -10%.


Similar to the brightness gradients but the following saturation gradients show a change of the XYZ color 42.6850, 40.8848, 43.1779 by changing the saturation by 10% instead.


 42.6850, 40.8848,
43.1779


 42.6850, 40.8848,
43.1779


348.2582,
349.8389, 375.2856

 29.8315, 28.2291,
29.6923


 78.4940, 76.5090,
81.2685

 19.8582, 18.4984,
19.3551

 102.1802,
100.2462, 106.7105

 12.3996, 11.3084,
11.7477


130.2079,
128.4461, 136.9752

 7.0906, 6.2747,
6.4517

162.9427,
161.4931, 172.4809

 3.5657, 3.0128,
3.0484

200.7497,
199.7714, 213.6462

 1.4595, 1.1384,
1.1194

243.9944,

 0.2980, 0.0105,

243.6656, 260.8898

0.0000

293.0421,
293.5599, 314.6300

■ 0.0000, 0.0000,
0.0000

■ 42.6850, 40.8848,
43.1779

■ 42.6850, 40.8848,
43.1779

■ 38.0493, 33.8940,
34.6013

■ 48.0403, 49.0136,
52.9215

■ 34.0991, 27.9850,
27.1451

■ 54.1406, 58.3221,
63.8710

■ 30.8025, 23.1054,
20.7636

■ 61.0145, 68.8571,
76.0668

■ 28.1238, 19.1959,
15.4068

■ 68.6877, 80.6606,
89.5465

■ 26.0237, 16.1915,
11.0206

■ 75.2392, 89.8818,
103.6977

■ 24.4585, 14.0188,
7.5459

■ 76.0583, 90.2094,
108.0112

■ 23.3779, 12.5934,
4.9171

■ 22.7210, 11.8114,
3.0589

■ 22.5133, 11.5754,
2.4367

Harmonies

Analogous

The Analogous color harmony consists of three colors that are next to each other on the color wheel.



42.4083, 40.8848, 48.7819



42.6850, 40.8848, 43.1779



41.9098, 40.8848, 38.3475

Triad

The Triadic color harmony groups three colors that are evenly spaced from another and form a triangle on the color wheel.



42.6850, 40.8848, 43.1779



36.6414, 40.8848, 36.5321



37.4335, 40.8848, 55.1320

Complementary

The Complementary color scheme is a pair of colors which are on the opposite of each other on the color wheel.



42.6850, 40.8848, 43.1779



43.7885, 50.1512, 55.5188

Split Complementary

Split-complementary colors differ from the complementary color scheme. The scheme consists of three colors, the original color and two neighbors of the complement color.



35.9615, 40.8848, 51.3142



42.6850, 40.8848, 43.1779



35.5149, 40.8848, 40.5075

Square

The Square scheme is like the rectangle color scheme, but the four colors are evenly spaced on the color wheel.



42.6850, 40.8848, 43.1779



38.3895, 40.8848, 34.7237



35.2702, 40.8848, 45.8827



39.3339, 40.8848, 55.9967

Rectangle

The Rectangle color scheme consists of four colors that form a rectangle on the color wheel.



42.6850, 40.8848, 43.1779



40.9155, 40.8848, 36.1093



35.2702, 40.8848, 45.8827



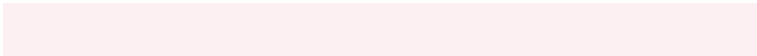
36.8740, 40.8848, 54.1369

Sweetspot

The Sweet Spot groups the original color and five complimentary colors.



42.6861, 40.8866, 43.1788



87.4339, 89.4048, 96.5979



44.0006, 41.2666, 56.6855



18.9843, 19.3309, 20.8598



0.0000, 0.0000, 0.0000



20.3446, 21.4041, 23.3091

Same Dimension

The Same Dimension uses a secret algorithm to generate beautiful new colors.



42.6861, 40.8866, 43.1788



73.9598, 68.9734, 72.0165



44.0863, 44.4233, 41.3751



10.1401, 10.1047, 10.8285



14.8226, 7.6188, 1.7117



0.6623, 0.3379, 0.1889

Inverse Universe

The Inverse Universe completely reimagines the original color for something new.



42.6861, 40.8866, 43.1788



73.9598, 68.9734, 72.0165



42.1894, 46.0699, 57.7081



10.1401, 10.1047, 10.8285



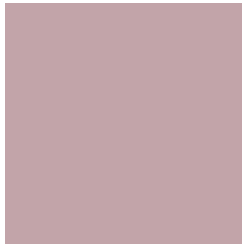
14.8226, 7.6188, 1.7117



0.6623, 0.3379, 0.1889

Previews

White Background



This preview shows how the XYZ color 42.6850, 40.8848, 43.1779 looks on a white background.

Color Contrast Check

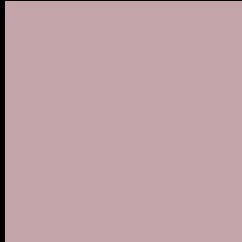
Large Text (above 18pt) WCAG AA × Fail

Any Text WCAG AA × Fail

Large Text (above 18pt) WCAG AAA × Fail

Any Text WCAG AAA × Fail

Black Background



This preview shows how the XYZ color 42.6850, 40.8848, 43.1779 looks on a black background.

Color Contrast Check

Large Text (above 18pt) WCAG AA ✓ Pass

Any Text WCAG AA ✓ Pass

Large Text (above 18pt) WCAG AAA ✓ Pass

Any Text WCAG AAA ✓ Pass

If you want to check with other color combinations, try the [Color Contrast Checker](#).

XYZ 42.6850, 40.8848, 43.1779

Background



This preview shows how black text looks on a background with the XYZ color 42.6850, 40.8848, 43.1779.



This preview shows how white text looks on a background with the XYZ color 42.6850, 40.8848,

Color Blindness Simulation

Color vision deficiency is a very complex topic, and I could not describe the different causes any better than Wikipedia does, so if you want to learn more, you should check out their [article about color blindness](#).

Dichromacy



Original Color

42.6850, 40.8848, 43.1779

Protanopia

39.5613, 41.1416, 45.3912

Deuteranopia

41.7839, 40.9558, 43.2391



Tritanopia

43.4393, 40.9311, 46.6853

Trichromacy



Original Color

42.6850, 40.8848, 43.1779

Protanomaly

40.5051, 40.8076, 44.7715

Deuteranomaly

42.1024, 40.8512, 43.2022

Tritanomaly

43.1457, 40.8136, 45.1390

Monochromacy



Original Color

42.6850, 40.8848, 43.1779

Achromatopsia

40.2316, 42.3268, 46.0938

Achromatomaly

40.8772, 41.5518, 44.8956

CSS Examples

Text

The CSS property to change the color of the text to XYZ 42.6850, 40.8848, 43.1779 is called "color". The color property can be set on classes, ids or directly on the HTML element.

This example shows how text in the color `rgb(194, 164, 169)` looks like.

```
.text, #text, p{  
    color:rgb(194, 164, 169)  
}
```

If you want to add a text shadow in that color use the text-shadow property, you can generate a text shadow directly with our [CSS Text Shadow Generator](#).

Here you see how black text with a 4 pixel rgb(194, 164, 169) colored shadow looks like.

```
.shadow{ text-shadow: 4px 4px 2px rgb(194, 164, 169) }
```

Border

The CSS property to change the border of an element to XYZ 42.6850, 40.8848, 43.1779 is called "border". The border property can be set on classes, ids or directly on the HTML element.

This example shows the color as border, it can be applied via the CSS property "border" or "border-color".

```
.border, #border, table{ border:4px solid rgb(194, 164, 169) }
```


If only the border color should be changed use the property border-color.

```
.border{ border-color:rgb(194, 164, 169) }
```

If you want to add a box shadow in that color use:

Here you see how a box with a 4 pixel rgb(194, 164, 169) colored shadow looks like.

```
.boxshadow{ -moz-box-shadow:4px 4px 4px  
4px rgb(194, 164, 169); -webkit-box-  
shadow:4px 4px 4px 4px rgb(194, 164, 169);  
box-shadow:4px 4px 4px 4px rgb(194, 164,  
169) }
```

Background

The CSS property to change the background color of an element to XYZ 42.6850, 40.8848, 43.1779 is called "background". The background property can be set on classes, ids or directly on the HTML element.

```
.background, #background, body{  
background: rgb(194, 164, 169) }
```

If only the background color should be changed can be used:

```
.background{ background-color: rgb(194,  
164, 169) }
```

This example shows the color as background, it is applied via the CSS property "background".

To optimize and compress your CSS code, you can use our [online CSS compressor and optimizer](#) based on csstidy. If you want to create a linear or radial gradient as background or border, check our [CSS Gradient Generator](#).

Hey! You found this booklet interesting? Support Converting Colors with the new Membership Option!

The pro membership hides all ads, plus gives you double the colors in the color bucket, and more awesome pro features!

[Learn more, Memberships starting at \\$2.50/m!](#)

**Follow me
on Twitter!**

@ConvertingColor