

Converting Colors

XYZ(42.4552, 38.5341, 31.9883)

Have a look what the booklet for
XYZ(42.4552, 38.5341, 31.9883)
contains.

XYZ(42.3986, 38.4209, 31.9694)	3
<i>Conversions</i>	4
<i>Details</i>	6
<i>Harmonies</i>	12
<i>Previews</i>	24
<i>Color Blindness Simulation</i>	28
<i>CSS Examples</i>	31

Color

**XYZ(42.3986, 38.4209,
31.9694)**

Conversions

Conversions Part 1

Format	Color
Hex	CF9A91
RGB	207, 154, 145
RGB Percent	81%, 60%, 57%
CMY	0.1882, 0.3961, 0.4314
CMYK	0.00, 0.26, 0.30, 0.19
HSL	9°, 39%, 69%
HSV	9°, 30%, 81%
XYZ	42.3986, 38.4209, 31.9694
YIQ	168.8210, 34.4770, 8.4370

Conversions

Conversions Part 2

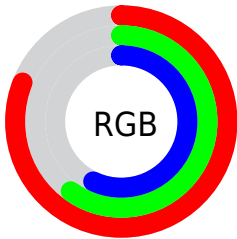
Format	Color
R_{YB}	207, 156, 145
Decimal	13605521
CIE _{Lab}	68.33, 18.55, 12.47
CIE _{LCh}	68, 22.349, 33.904
Yxy	38.4209, 0.3759, 0.3406
Android (android.graphics.Color)	4291795601 (0xFFCF9A91)
YUV	168.8210, -11.7438, 33.4830
Hunter-Lab	61.9846, 13.6242, 12.8096

Details

The XYZ color **42.3986, 38.4209, 31.9694** is a light color, and the websafe version is hex **CC9999**. A complement of this color would be **43.1331, 50.9115, 66.5853**, and the grayscale version is **37.6687, 39.6304, 43.1575**.

A 20% lighter version of the original color is **74.3493, 70.9844, 63.8156**, and **19.6783, 17.1060, 13.0911** is the 20% darker color. If you saturate the color by 10%, you get **38.2375, 32.4244, 23.4120**, and if you desaturate by 10%, it is **47.2831, 45.3983, 42.2035**.

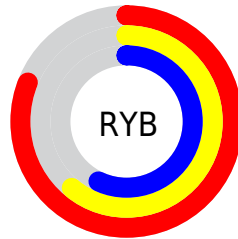
Distribution



Red (81%)

Green (60%)

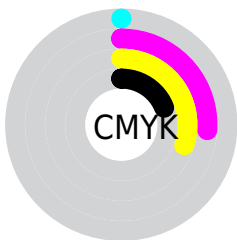
Blue (57%)



Red (81%)

Yellow (61%)

Blue (57%)

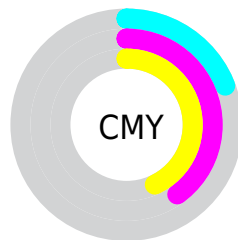


Cyan (0%)

Magenta (26%)

Yellow (30%)

Black (19%)



Cyan (19%)


Magenta (40%)


Yellow (43%)

Brightness & Saturation Gradients


These gradients show how the XYZ color 42.3986, 38.4209, 31.9694 changes by changing the brightness by 10 percent. The first figure shows a shift by +10% for each color and the second figure -10%.


Similar to the brightness gradients but the following saturation gradients show a change of the XYZ color 42.3986, 38.4209, 31.9694 by changing the saturation by 10% instead.


 42.3986, 38.4209,
31.9694

 42.3986, 38.4209,
31.9694


347.0962,
339.4221, 325.4683

 29.6060, 26.3095,
21.0735


 78.0639, 72.7528,
63.8605

 19.6863, 17.0553,
12.9860


 101.6674, 95.7421,
85.6927

 12.2742, 10.2740,
7.2883


129.6051,
123.1262, 112.0075

 7.0042, 5.5810,
3.5619

162.2426,
155.2895, 143.2233

 3.5111, 2.5920,
1.3882

199.9450,
192.6163, 179.7588

 1.4294, 0.9226,
0.1325

243.0779,

 0.2771, 0.0000,

235.4911, 222.0324

0.0000

292.0065,
284.2982, 270.4627

■ 0.0000, 0.0000,
0.0000

■ 42.3986, 38.4209,
31.9694

■ 42.3986, 38.4209,
31.9694

■ 38.2375, 32.4244,
23.4120

■ 47.2831, 45.3983,
42.2035

■ 34.7621, 27.3596,
16.4395

■ 52.9201, 53.3922,
54.1949

■ 31.9360, 23.1810,
10.9548

■ 59.3410, 62.4431,
68.0216

■ 29.7181, 19.8372,
6.8490

■ 66.5742, 72.5877,
83.7563

■ 28.0625, 17.2715,
3.9986

■ 74.6470, 83.8610,
101.4679

■ 26.9163, 15.4199,
2.2575

■ 79.5423, 92.0055,
108.1742

■ 26.2008, 14.2017,
1.3632

■ 26.1981, 14.1971,
1.3595

Harmonies

Analogous

The Analogous color harmony consists of three colors that are next to each other on the color wheel.



43.6588, 38.4209, 40.5339



42.3986, 38.4209, 31.9694



39.5617, 38.4209, 26.7908

Triad

The Triadic color harmony groups three colors that are evenly spaced from another and form a triangle on the color wheel.



42.3986, 38.4209, 31.9694



30.7966, 38.4209, 33.9091



36.9785, 38.4209, 64.1824

Complementary

The Complementary color scheme is a pair of colors which are on the opposite of each other on the color wheel.



42.3986, 38.4209, 31.9694



43.1331, 50.9115, 66.5853

Split Complementary

Split-complementary colors differ from the complementary color scheme. The scheme consists of three colors, the original color and two neighbors of the complement color.



33.6344, 38.4209, 61.6599



42.3986, 38.4209, 31.9694



30.2015, 38.4209, 43.1612

Square

The Square scheme is like the rectangle color scheme, but the four colors are evenly spaced on the color wheel.



42.3986, 38.4209, 31.9694



32.8880, 38.4209, 27.7787



31.2078, 38.4209, 53.5435



40.4056, 38.4209, 59.9742

Rectangle

The Rectangle color scheme consists of four colors that form a rectangle on the color wheel.



42.3986, 38.4209, 31.9694



37.2378, 38.4209, 25.4344



31.2078, 38.4209, 53.5435



35.8073, 38.4209, 64.0969

Sweetspot

The Sweet Spot groups the original color and five complimentary colors.



42.3996, 38.4227, 31.9702



85.6307, 86.7252, 88.6076



46.1358, 37.6278, 58.7023



18.0238, 18.1320, 18.3132



0.0000, 0.0000, 0.0000



20.3446, 21.4041, 23.3091

Same Dimension

The Same Dimension uses a secret algorithm to generate beautiful new colors.



42.3996, 38.4227, 31.9702



63.4986, 55.1711, 42.0467



48.0393, 49.7020, 33.8501



11.9453, 12.0813, 12.3144



16.5482, 9.0294, 0.8707



0.9708, 0.5959, 0.0639

Inverse Universe

The Inverse Universe completely reimagines the original color for something new.



43.1331, 50.9115, 66.5853



64.8488, 78.3347, 106.3100



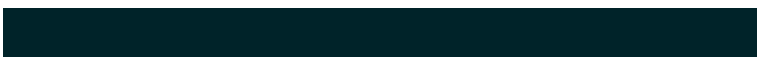
36.8934, 38.4321, 64.5054



12.0060, 13.1022, 15.1399



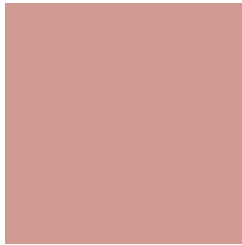
17.0477, 22.7421, 40.6836



0.9941, 1.3534, 2.2884

Previews

White Background



This preview shows how the XYZ color 42.3986, 38.4209, 31.9694 looks on a white background.

Color Contrast Check

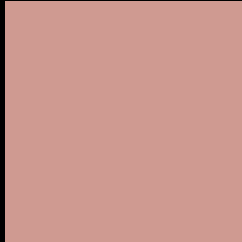
Large Text (above 18pt) WCAG AA × Fail

Any Text WCAG AA × Fail

Large Text (above 18pt) WCAG AAA × Fail

Any Text WCAG AAA × Fail

Black Background



This preview shows how the XYZ color 42.3986, 38.4209, 31.9694 looks on a black background.

Color Contrast Check

Large Text (above 18pt) WCAG AA ✓ Pass

Any Text WCAG AA ✓ Pass

Large Text (above 18pt) WCAG AAA ✓ Pass

Any Text WCAG AAA ✓ Pass

If you want to check with other color combinations, try the [Color Contrast Checker](#).

XYZ 42.3986, 38.4209, 31.9694

Background



This preview shows how black text looks on a background with the XYZ color 42.3986, 38.4209, 31.9694.



This preview shows how white text looks on a background with the XYZ color 42.3986, 38.4209,

31.9694.

Color Blindness Simulation

Color vision deficiency is a very complex topic, and I could not describe the different causes any better than Wikipedia does, so if you want to learn more, you should check out their [article about color blindness](#).

Dichromacy



Original Color

42.3986, 38.4209, 31.9694

Protanopia

36.6777, 38.5055, 34.7773

Deuteranopia

39.2648, 38.5797, 31.7627



Tritanopia

43.9720, 38.3329, 39.7317

Trichromacy



Original Color

42.3986, 38.4209, 31.9694

Protanomaly

38.5948, 38.4497, 33.8211

Deuteranomaly

40.2869, 38.3377, 31.6621

Tritanomaly

43.2414, 38.2667, 36.5596

Monochromacy



Original Color

42.3986, 38.4209, 31.9694

Achromatopsia

37.7116, 39.6755, 43.2066

Achromatomaly

39.1491, 39.1563, 38.7522

CSS Examples

Text

The CSS property to change the color of the text to XYZ 42.3986, 38.4209, 31.9694 is called "color". The color property can be set on classes, ids or directly on the HTML element.

This example shows how text in the color `rgb(207, 154, 145)` looks like.

```
.text, #text, p{  
    color:rgb(207, 154, 145)  
}
```

If you want to add a text shadow in that color use the text-shadow property, you can generate a text shadow directly with our [CSS Text Shadow Generator](#).

Here you see how black text with a 4 pixel rgb(207, 154, 145) colored shadow looks like.

```
.shadow{ text-shadow: 4px 4px 2px rgb(207, 154, 145) }
```

Border

The CSS property to change the border of an element to XYZ 42.3986, 38.4209, 31.9694 is called "border". The border property can be set on classes, ids or directly on the HTML element.

This example shows the color as border, it can be applied via the CSS property "border" or "border-color".

```
.border, #border, table{ border:4px solid rgb(207, 154, 145) }
```


If only the border color should be changed use the property `border-color`.

```
.border{ border-color:rgb(207, 154, 145) }
```

If you want to add a box shadow in that color use:

Here you see how a box with a 4 pixel `rgb(207, 154, 145)` colored shadow looks like.

```
.boxshadow{ -moz-box-shadow:4px 4px 4px  
4px rgb(207, 154, 145); -webkit-box-  
shadow:4px 4px 4px 4px rgb(207, 154, 145);  
box-shadow:4px 4px 4px 4px rgb(207, 154,  
145) }
```

Background

The CSS property to change the background color of an element to XYZ 42.3986, 38.4209, 31.9694 is called "background". The background property can be set on classes, ids or directly on the HTML element.

```
.background, #background, body{  
background: rgb(207, 154, 145) }
```

If only the background color should be changed can be used:

```
.background{ background-color: rgb(207,  
154, 145) }
```

This example shows the color as background, it is applied via the CSS property "background".

To optimize and compress your CSS code, you can use our [online CSS compressor and optimizer](#) based on csstidy. If you want to create a linear or radial gradient as background or border, check our [CSS Gradient Generator](#).

Hey! You found this booklet interesting? Support Converting Colors with the new Membership Option!

The pro membership hides all ads, plus gives you double the colors in the color bucket, and more awesome pro features!

[Learn more, Memberships starting at \\$2.50/m!](#)

**Follow me
on Twitter!**

@ConvertingColor