

Converting Colors

XYZ(42.4793, 39.3063, 39.0662)

Have a look what the booklet for
XYZ(42.4793, 39.3063, 39.0662)
contains.

XYZ(42.4793, 39.3063, 39.0662)	3
<i>Conversions</i>	4
<i>Details</i>	6
<i>Harmonies</i>	12
<i>Previews</i>	24
<i>Color Blindness Simulation</i>	28
<i>CSS Examples</i>	31

Color

**XYZ(42.4793, 39.3063,
39.0662)**

Conversions

Conversions Part 1

Format	Color
Hex	C89EA1
RGB	200, 158, 161
RGB Percent	78%, 62%, 63%
CMY	0.2157, 0.3804, 0.3686
CMYK	0.00, 0.21, 0.19, 0.22
HSL	356°, 28%, 70%
HSV	356°, 21%, 78%
XYZ	42.4793, 39.3063, 39.0662
YIQ	170.9000, 24.0690, 9.8370

Conversions

Conversions Part 2

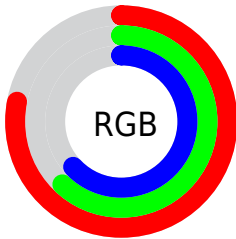
Format	Color
RYB	200, 158, 161
Decimal	13147809
CIELab	68.97, 16.02, 4.39
CIELCh	69, 16.610, 15.318
Yxy	39.3063, 0.3515, 0.3252
Android (android.graphics.Color)	4291337889 (0xFFC89EA1)
YUV	170.9000, -4.8807, 25.5207
Hunter-Lab	62.6947, 11.2283, 6.9417

Details

The XYZ color **42.4793, 39.3063, 39.0662** is a light color, and the websafe version is hex **CC9999**. A complement of this color would be **44.8345, 52.6098, 60.6176**, and the grayscale version is **38.6747, 40.6887, 44.3100**.

A 20% lighter version of the original color is **77.4289, 73.8064, 75.1309**, and **19.6456, 17.4536, 17.0853** is the 20% darker color. If you saturate the color by 10%, you get **37.8234, 32.4237, 30.0249**, and if you desaturate by 10%, it is **47.9358, 47.4002, 49.5756**.

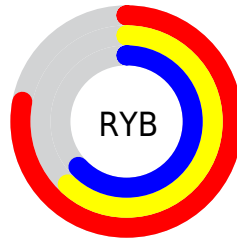
Distribution



Red (78%)

Green (62%)

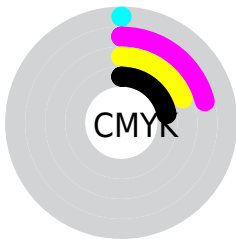
Blue (63%)



Red (78%)

Yellow (62%)

Blue (63%)

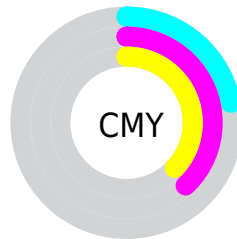


Cyan (0%)

Magenta (21%)

Yellow (19%)

Black (22%)



Cyan (22%)


Magenta (38%)


Yellow (37%)

Brightness & Saturation Gradients


These gradients show how the XYZ color 42.4793, 39.3063, 39.0662 changes by changing the brightness by 10 percent. The first figure shows a shift by +10% for each color and the second figure -10%.


Similar to the brightness gradients but the following saturation gradients show a change of the XYZ color 42.4793, 39.3063, 39.0662 by changing the saturation by 10% instead.


 42.4793, 39.3063,
39.0662


 42.4793, 39.3063,
39.0662


347.4239,
343.1910, 357.6062

 29.6695, 26.9981,
26.5030

 78.1851, 74.1060,
74.9609

 19.7347, 17.5718,
16.9712


 101.8119, 97.3663,
99.1295

 12.3095, 10.6430,
10.0522

129.7751,
125.0461, 128.0036

 7.0285, 5.8273,
5.3275

162.4399,
157.5297, 162.0018

 3.5264, 2.7404,
2.3786

200.1719,
195.2016, 201.5426

 1.4379, 0.9977,
0.7748

243.3363,

 0.2830, 0.0000,

238.4462, 247.0446

0.0000

292.2985,
287.6479, 298.9263

0.0000, 0.0000,
0.0000

42.4793, 39.3063,
39.0662

42.4793, 39.3063,
39.0662

37.8234, 32.4237,
30.0249

47.9358, 47.4002,
49.5756

33.9275, 26.6890,
22.3840

54.2249, 56.7539,
61.6119

30.7520, 22.0414,
16.0743

61.3803, 67.4201,
75.2335

28.2527, 18.4123,
11.0194

69.4335, 79.4467,
90.4951

26.3804, 15.7250,
7.1354

77.4476, 90.9467,
107.1267

■ 25.0791, 13.8925,
4.3280

■ 77.6296, 91.0194,
108.0847

■ 24.2831, 12.8111,
2.4885

■ 23.9007, 12.3119,
1.5418

Harmonies

Analogous

The Analogous color harmony consists of three colors that are next to each other on the color wheel.



42.4952, 39.3063, 46.5943



42.4793, 39.3063, 39.0662



41.0487, 39.3063, 33.2595

Triad

The Triadic color harmony groups three colors that are evenly spaced from another and form a triangle on the color wheel.



42.4793, 39.3063, 39.0662



33.8607, 39.3063, 33.3563



36.0860, 39.3063, 58.4804

Complementary

The Complementary color scheme is a pair of colors which are on the opposite of each other on the color wheel.



42.4793, 39.3063, 39.0662



44.8345, 52.6098, 60.6176

Split Complementary

Split-complementary colors differ from the complementary color scheme. The scheme consists of three colors, the original color and two neighbors of the complement color.



33.8981, 39.3063, 54.0051



42.4793, 39.3063, 39.0662



32.6551, 39.3063, 39.2135

Square

The Square scheme is like the rectangle color scheme, but the four colors are evenly spaced on the color wheel.



42.4793, 39.3063, 39.0662



36.0327, 39.3063, 30.2374



32.6685, 39.3063, 46.7599



38.7184, 39.3063, 58.4289

Rectangle

The Rectangle color scheme consists of four colors that form a rectangle on the color wheel.



42.4793, 39.3063, 39.0662



39.5224, 39.3063, 30.8867



32.6685, 39.3063, 46.7599



35.2769, 39.3063, 57.4344

Sweetspot

The Sweet Spot groups the original color and five complimentary colors.



42.4804, 39.3081, 39.0670



88.1579, 89.7421, 95.7315



45.5486, 40.4286, 60.0467



18.7159, 18.9802, 20.1966



0.0000, 0.0000, 0.0000



20.3446, 21.4041, 23.3091

Same Dimension

The Same Dimension uses a secret algorithm to generate beautiful new colors.



42.4804, 39.3081, 39.0670



69.8662, 62.6071, 60.5063



45.4196, 45.6044, 38.7586



10.6641, 10.6490, 11.2142



15.2094, 7.8333, 1.0469



0.7311, 0.3753, 0.1070

Inverse Universe

The Inverse Universe completely reimagines the original color for something new.



42.4804, 39.3081, 39.0670



69.8662, 62.6071, 60.5063



41.3579, 45.1018, 61.1696



10.6641, 10.6490, 11.2142



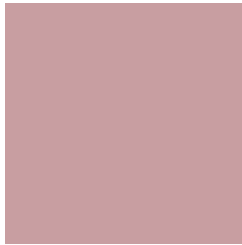
15.2094, 7.8333, 1.0469



0.7311, 0.3753, 0.1070

Previews

White Background



This preview shows how the XYZ color 42.4793, 39.3063, 39.0662 looks on a white background.

Color Contrast Check

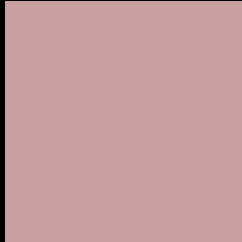
Large Text (above 18pt) WCAG AA × Fail

Any Text WCAG AA × Fail

Large Text (above 18pt) WCAG AAA × Fail

Any Text WCAG AAA × Fail

Black Background



This preview shows how the XYZ color 42.4793, 39.3063, 39.0662 looks on a black background.

Color Contrast Check

Large Text (above 18pt) WCAG AA ✓ Pass

Any Text WCAG AA ✓ Pass

Large Text (above 18pt) WCAG AAA ✓ Pass

Any Text WCAG AAA ✓ Pass

If you want to check with other color combinations, try the [Color Contrast Checker](#).

XYZ 42.4793, 39.3063, 39.0662

Background



This preview shows how black text looks on a background with the XYZ color 42.4793, 39.3063, 39.0662.



This preview shows how white text looks on a background with the XYZ color 42.4793, 39.3063,

Color Blindness Simulation

Color vision deficiency is a very complex topic, and I could not describe the different causes any better than Wikipedia does, so if you want to learn more, you should check out their [article about color blindness](#).

Dichromacy



Original Color

42.4793, 39.3063, 39.0662

Protanopia

37.8988, 39.5291, 41.7088

Deuteranopia

40.1814, 39.4238, 38.7495



Tritanopia

43.3058, 39.3960, 42.8578

Trichromacy



Original Color

42.4793, 39.3063, 39.0662

Protanomaly

39.2677, 39.1763, 40.6141

Deuteranomaly

40.8283, 39.2343, 38.6788

Tritanomaly

43.0273, 39.2846, 41.3913

Monochromacy



Original Color

42.4793, 39.3063, 39.0662

Achromatopsia

38.7082, 40.7240, 44.3485

Achromatomaly

39.9027, 40.0075, 42.1783

CSS Examples

Text

The CSS property to change the color of the text to XYZ 42.4793, 39.3063, 39.0662 is called "color". The color property can be set on classes, ids or directly on the HTML element.

This example shows how text in the color `rgb(200, 158, 161)` looks like.

```
.text, #text, p{  
    color:rgb(200, 158, 161)  
}
```

If you want to add a text shadow in that color use the text-shadow property, you can generate a text shadow directly with our [CSS Text Shadow Generator](#).

Here you see how black text with a 4 pixel rgb(200, 158, 161) colored shadow looks like.

```
.shadow{ text-shadow: 4px 4px 2px rgb(200, 158, 161) }
```

Border

The CSS property to change the border of an element to XYZ 42.4793, 39.3063, 39.0662 is called "border". The border property can be set on classes, ids or directly on the HTML element.

This example shows the color as border, it can be applied via the CSS property "border" or "border-color".

```
.border, #border, table{ border:4px solid rgb(200, 158, 161) }
```


If only the border color should be changed use the property `border-color`.

```
.border{ border-color:rgb(200, 158, 161) }
```

If you want to add a box shadow in that color use:

Here you see how a box with a 4 pixel `rgb(200, 158, 161)` colored shadow looks like.

```
.boxshadow{ -moz-box-shadow:4px 4px 4px  
4px rgb(200, 158, 161); -webkit-box-  
shadow:4px 4px 4px 4px rgb(200, 158, 161);  
box-shadow:4px 4px 4px 4px rgb(200, 158,  
161) }
```

Background

The CSS property to change the background color of an element to XYZ 42.4793, 39.3063, 39.0662 is called "background". The background property can be set on classes, ids or directly on the HTML element.

```
.background, #background, body{  
background: rgb(200, 158, 161) }
```

If only the background color should be changed can be used:

```
.background{ background-color: rgb(200,  
158, 161) }
```

This example shows the color as background, it is applied via the CSS property "background".

To optimize and compress your CSS code, you can use our [online CSS compressor and optimizer](#) based on csstidy. If you want to create a linear or radial gradient as background or border, check our [CSS Gradient Generator](#).

Hey! You found this booklet interesting? Support Converting Colors with the new Membership Option!

The pro membership hides all ads, plus gives you double the colors in the color bucket, and more awesome pro features!

[Learn more, Memberships starting at \\$2.50/m!](#)

**Follow me
on Twitter!**

@ConvertingColor