

Converting Colors

XYZ(42.5409, 41.0049, 44.1091)

Have a look what the booklet for
XYZ(42.5409, 41.0049, 44.1091)
contains.

XYZ(42.5440, 41.0570, 44.2106)	3
<i>Conversions</i>	4
<i>Details</i>	6
<i>Harmonies</i>	12
<i>Previews</i>	24
<i>Color Blindness Simulation</i>	28
<i>CSS Examples</i>	31

Color

**XYZ(42.5440, 41.0570,
44.2106)**

Conversions

Conversions Part 1

Format	Color
Hex	C0A5AB
RGB	192, 165, 171
RGB Percent	75%, 65%, 67%
CMY	0.2471, 0.3529, 0.3294
CMYK	0.00, 0.14, 0.11, 0.25
HSL	347°, 18%, 70%
HSV	347°, 14%, 75%
XYZ	42.5440, 41.0570, 44.2106
YIQ	173.7570, 14.1660, 7.5900

Conversions

Conversions Part 2

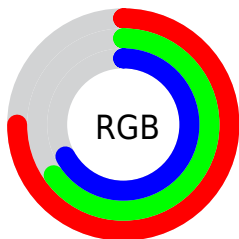
Format	Color
RYB	192, 165, 171
Decimal	12625323
CIELab	70.22, 10.86, 0.55
CIElCh	70, 10.869, 2.895
Yxy	41.0570, 0.3329, 0.3212
Android (android.graphics.Color)	4290815403 (0xFFC0A5AB)
YUV	173.7570, -1.3592, 15.9991
Hunter-Lab	64.0757, 6.3851, 3.9444

Details

The XYZ color **42.5440, 41.0570, 44.2106** is a light color, and the websafe version is hex **CC9999**. A complement of this color would be **43.2311, 49.2447, 53.6833**, and the grayscale version is **40.1100, 42.1989, 45.9546**.

A 20% lighter version of the original color is **78.3876, 76.8171, 82.6472**, and **19.7161, 18.5454, 19.9932** is the 20% darker color. If you saturate the color by 10%, you get **37.9935, 34.1067, 36.0626**, and if you desaturate by 10%, it is **47.7776, 49.1151, 53.3810**.

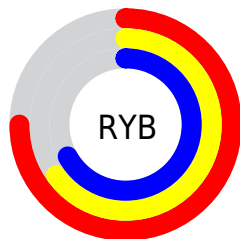
Distribution



Red (75%)

Green (65%)

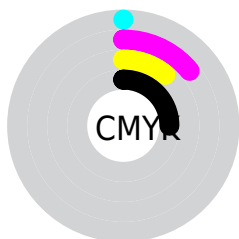
Blue (67%)



Red (75%)

Yellow (65%)

Blue (67%)

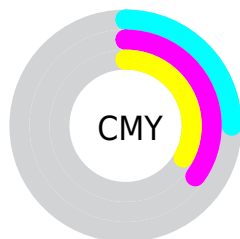


Cyan (0%)

Magenta (14%)

Yellow (11%)

Black (25%)



Cyan (25%)


Magenta (35%)


Yellow (33%)

Brightness & Saturation Gradients


These gradients show how the XYZ color 42.5440, 41.0570, 44.2106 changes by changing the brightness by 10 percent. The first figure shows a shift by +10% for each color and the second figure -10%.


Similar to the brightness gradients but the following saturation gradients show a change of the XYZ color 42.5440, 41.0570, 44.2106 by changing the saturation by 10% instead.


 42.5440, 41.0570,
44.2106


 42.5440, 41.0570,
44.2106


347.6865,
350.5588, 379.6335

 29.7205, 28.3636,
30.4977


 78.2823, 76.7704,
82.8404

 19.7735, 18.5999,
19.9614

 101.9278,
100.5592, 108.5944

 12.3378, 11.3816,
12.1832


129.9113,
128.8153, 139.1991

 7.0480, 6.3241,
6.7445

162.5981,
161.9231, 175.0732

 3.5388, 3.0431,
3.2268

200.3537,
200.2670, 216.6351

 1.4447, 1.1543,
1.2116

243.5434,

 0.2877, 0.0239,

244.2312, 264.3035

0.0000

292.5325,
294.2004, 318.4967

■ 0.0000, 0.0000,
0.0000

■ 42.5440, 41.0570,
44.2106

■ 42.5440, 41.0570,
44.2106

■ 37.9935, 34.1067,
36.0626

■ 47.7776, 49.1151,
53.3810

■ 34.0942, 28.2103,
28.8986

■ 53.7175, 58.3209,
63.6050

■ 30.8169, 23.3179,
22.6815

■ 60.3903, 68.7189,
74.9160

■ 28.1285, 19.3731,
17.3711

■ 67.8198, 80.3497,
87.3449

■ 25.9931, 16.3139,
12.9239

■ 74.0834, 89.3606,
100.2729

■ 24.3705, 14.0710,
9.2930

■ 75.5484, 89.9465,
107.9873

■ 23.2149, 12.5647,
6.4265

■ 22.4718, 11.6989,
4.2661

■ 22.1680, 11.3784,
3.2797

Harmonies

Analogous

The Analogous color harmony consists of three colors that are next to each other on the color wheel.



42.1515, 41.0570, 49.3225



42.5440, 41.0570, 44.2106



41.9697, 41.0570, 39.5870

Triad

The Triadic color harmony groups three colors that are evenly spaced from another and form a triangle on the color wheel.



42.5440, 41.0570, 44.2106



37.1932, 41.0570, 36.9653



37.4841, 41.0570, 54.0139

Complementary

The Complementary color scheme is a pair of colors which are on the opposite of each other on the color wheel.



42.5440, 41.0570, 44.2106



43.2311, 49.2447, 53.6833

Split Complementary

Split-complementary colors differ from the complementary color scheme. The scheme consists of three colors, the original color and two neighbors of the complement color.



36.2184, 41.0570, 50.2442



42.5440, 41.0570, 44.2106



36.0541, 41.0570, 40.3834

Square

The Square scheme is like the rectangle color scheme, but the four colors are evenly spaced on the color wheel.



42.5440, 41.0570, 44.2106



38.8508, 41.0570, 35.6081



35.7027, 41.0570, 45.2012



39.1967, 41.0570, 55.2304

Rectangle

The Rectangle color scheme consists of four colors that form a rectangle on the color wheel.



42.5440, 41.0570, 44.2106



41.1258, 41.0570, 37.3305



35.7027, 41.0570, 45.2012



36.9940, 41.0570, 52.9899

Sweetspot

The Sweet Spot groups the original color and five complimentary colors.



42.5452, 41.0588, 44.2115



86.5661, 88.9875, 96.7162



43.1477, 41.1195, 55.5322



18.4073, 18.8374, 20.4638



92.9021, 97.7402, 106.4391



19.4759, 20.4902, 22.3138

Same Dimension

The Same Dimension uses a secret algorithm to generate beautiful new colors.



42.5452, 41.0588, 44.2115



74.3079, 70.1356, 75.1670



43.3216, 43.5059, 41.7137



10.1628, 10.1137, 10.9477



14.9411, 7.6662, 2.3362



0.6724, 0.3420, 0.2420

Inverse Universe

The Inverse Universe completely reimagines the original color for something new.



42.5452, 41.0588, 44.2115



74.3079, 70.1356, 75.1670



42.3400, 46.4206, 56.5980



10.1628, 10.1137, 10.9477



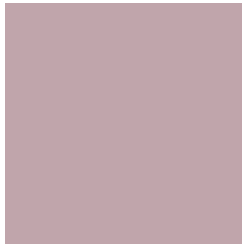
14.9411, 7.6662, 2.3362



0.6724, 0.3420, 0.2420

Previews

White Background



This preview shows how the XYZ color 42.5440, 41.0570, 44.2106 looks on a white background.

Color Contrast Check

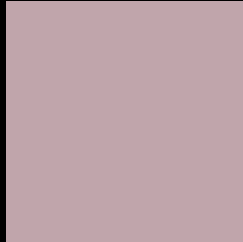
Large Text (above 18pt) WCAG AA × Fail

Any Text WCAG AA × Fail

Large Text (above 18pt) WCAG AAA × Fail

Any Text WCAG AAA × Fail

Black Background



This preview shows how the XYZ color 42.5440, 41.0570, 44.2106 looks on a black background.

Color Contrast Check

Large Text (above 18pt) WCAG AA ✓ Pass

Any Text WCAG AA ✓ Pass

Large Text (above 18pt) WCAG AAA ✓ Pass

Any Text WCAG AAA ✓ Pass

If you want to check with other color combinations, try the [Color Contrast Checker](#).

XYZ 42.5440, 41.0570, 44.2106

Background



This preview shows how black text looks on a background with the XYZ color 42.5440, 41.0570, 44.2106.



This preview shows how white text looks on a background with the XYZ color 42.5440, 41.0570,

Color Blindness Simulation

Color vision deficiency is a very complex topic, and I could not describe the different causes any better than Wikipedia does, so if you want to learn more, you should check out their [article about color blindness](#).

Dichromacy



Original Color

42.5440, 41.0570, 44.2106

Protanopia

39.6585, 41.1805, 45.9028

Deuteranopia

41.9732, 41.0315, 44.2357



Tritanopia

43.2036, 41.0627, 47.2438

Trichromacy



Original Color

42.5440, 41.0570, 44.2106

Protanomaly

40.7868, 41.2168, 45.3411

Deuteranomaly

42.2221, 41.1599, 44.2474

Tritanomaly

43.0056, 40.9835, 46.2014

Monochromacy



Original Color

42.5440, 41.0570, 44.2106

Achromatopsia

40.2316, 42.3268, 46.0938

Achromatomaly

41.1618, 41.9667, 45.4661

CSS Examples

Text

The CSS property to change the color of the text to XYZ 42.5440, 41.0570, 44.2106 is called "color". The color property can be set on classes, ids or directly on the HTML element.

This example shows how text in the color `rgb(192, 165, 171)` looks like.

```
.text, #text, p{  
    color:rgb(192, 165, 171)  
}
```

If you want to add a text shadow in that color use the text-shadow property, you can generate a text shadow directly with our [CSS Text Shadow Generator](#).

Here you see how black text with a 4 pixel rgb(192, 165, 171) colored shadow looks like.

```
.shadow{ text-shadow: 4px 4px 2px rgb(192, 165, 171) }
```

Border

The CSS property to change the border of an element to XYZ 42.5440, 41.0570, 44.2106 is called "border". The border property can be set on classes, ids or directly on the HTML element.

This example shows the color as border, it can be applied via the CSS property "border" or "border-color".

```
.border, #border, table{ border:4px solid rgb(192, 165, 171) }
```


If only the border color should be changed use the property `border-color`.

```
.border{ border-color:rgb(192, 165, 171) }
```

If you want to add a box shadow in that color use:

Here you see how a box with a 4 pixel `rgb(192, 165, 171)` colored shadow looks like.

```
.boxshadow{ -moz-box-shadow:4px 4px 4px  
4px rgb(192, 165, 171); -webkit-box-  
shadow:4px 4px 4px 4px rgb(192, 165, 171);  
box-shadow:4px 4px 4px 4px rgb(192, 165,  
171) }
```

Background

The CSS property to change the background color of an element to XYZ 42.5440, 41.0570, 44.2106 is called "background". The background property can be set on classes, ids or directly on the HTML element.

```
.background, #background, body{  
background: rgb(192, 165, 171) }
```

If only the background color should be changed can be used:

```
.background{ background-color: rgb(192,  
165, 171) }
```

This example shows the color as background, it is applied via the CSS property "background".

To optimize and compress your CSS code, you can use our [online CSS compressor and optimizer](#) based on csstidy. If you want to create a linear or radial gradient as background or border, check our [CSS Gradient Generator](#).

Hey! You found this booklet interesting? Support Converting Colors with the new Membership Option!

The pro membership hides all ads, plus gives you double the colors in the color bucket, and more awesome pro features!

[Learn more, Memberships starting at \\$2.50/m!](#)

**Follow me
on Twitter!**

@ConvertingColor