

Converting Colors

XYZ(42.5664, 27.0277, 22.3351)

Have a look what the booklet for
XYZ(42.5664, 27.0277, 22.3351)
contains.

XYZ(42.7027, 27.1400, 22.3899)	3
<i>Conversions</i>	4
<i>Details</i>	6
<i>Harmonies</i>	12
<i>Previews</i>	24
<i>Color Blindness Simulation</i>	28
<i>CSS Examples</i>	31

Color

**XYZ(42.7027, 27.1400,
22.3899)**

Conversions

Conversions Part 1

Format	Color
Hex	EE5B7D
RGB	238, 91, 125
RGB Percent	93%, 36%, 49%
CMY	0.0667, 0.6431, 0.5098
CMYK	0.00, 0.62, 0.47, 0.07
HSL	346°, 81%, 65%
HSV	346°, 62%, 93%
XYZ	42.7027, 27.1400, 22.3899
YIQ	138.8290, 76.6980, 41.7380

Conversions

Conversions Part 2

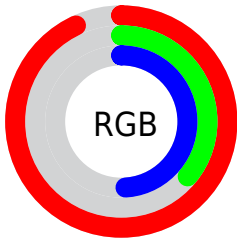
Format	Color
R_{YB}	238, 91, 125
Decimal	15620989
CIE _{Lab}	59.10, 59.23, 11.44
CIE _{LCh}	59, 60.322, 10.933
Yxy	27.1400, 0.4630, 0.2943
Android (android.graphics.Color)	4293811069 (0xFFEE5B7D)
YUV	138.8290, -6.8177, 86.9730
Hunter-Lab	52.0961, 55.1468, 10.9855

Details

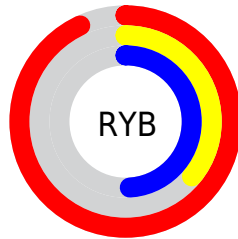
The XYZ color **42.7027, 27.1400, 22.3899** is a dark color, and the websafe version is hex **FF6699**. The color can be described as middle muted rose. A complement of this color would be **45.7898, 67.7336, 67.7923**, and the grayscale version is **24.4807, 25.7557, 28.0479**.

A 20% lighter version of the original color is **59.6095, 45.3018, 47.1973**, and **19.8512, 10.6994, 7.8564** is the 20% darker color. If you saturate the color by 10%, you get **39.9178, 23.2716, 16.2165**, and if you desaturate by 10%, it is **46.3493, 32.3872, 29.9131**.

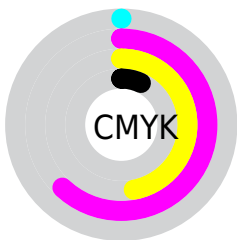
Distribution



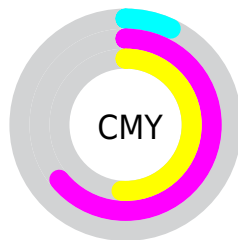
- Red (93%)
- Green (36%)
- Blue (49%)



- Red (93%)
- Yellow (36%)
- Blue (49%)



- Cyan (0%)
- Magenta (62%)
- Yellow (47%)
- Black (7%)



- Cyan (7%)
- Magenta (64%)
- Yellow (51%)

Brightness & Saturation Gradients

These gradients show how the XYZ color 42.7027, 27.1400, 22.3899 changes by changing the brightness by 10 percent. The first figure shows a shift by +10% for each color and the second figure -10%.

Similar to the brightness gradients but the following saturation gradients show a change of the XYZ color 42.7027, 27.1400, 22.3899 by changing the saturation by 10% instead.

42.7027, 27.1400,
22.3899

42.7027, 27.1400,
22.3899

348.3300,
288.3343, 277.5954

29.8454, 17.6784,
13.9426

78.5205, 55.1084,
48.3000

19.8688, 10.7193,
7.9425

102.2118, 74.3841,
66.5999

12.4074, 5.8784,
3.9709

130.2452, 97.6998,
89.0211

7.0959, 2.7713,
1.6094

162.9859,
125.4401, 115.9821

3.5690, 1.0135,
0.2975

200.7994,
157.9893, 147.9015

1.4613, 0.0000,
0.0000

244.0510,

0.2993, 0.0000,

195.7318, 185.1978

0.0000

293.1061,
239.0520, 228.2896

■ 0.0000, 0.0000,
0.0000

■ 42.7027, 27.1400,
22.3899

■ 42.7027, 27.1400,
22.3899

■ 39.9178, 23.2716,
16.2165

■ 46.3493, 32.3872,
29.9131

■ 37.9171, 20.6461,
11.3081

■ 50.9214, 39.1234,
38.8608


■ 36.6122, 19.1074,
7.5713


■ 56.4792, 47.4528,
49.3034


■ 35.9503, 18.4533,
5.2862

■ 63.0772, 57.4687,
61.3064

■ 70.7657, 69.2574,
74.9310

 79.5916, 82.8992,
90.2354

 88.7613, 96.7937,
106.9953

 89.0699, 96.9171,
108.6201

Harmonies

Analogous

The Analogous color harmony consists of three colors that are next to each other on the color wheel.



41.9661, 27.1400, 45.1994



42.7027, 27.1400, 22.3899



38.2956, 27.1400, 9.9113

Triad

The Triadic color harmony groups three colors that are evenly spaced from another and form a triangle on the color wheel.



42.7027, 27.1400, 22.3899



17.4545, 27.1400, 8.0430



21.3659, 27.1400, 88.2916

Complementary

The Complementary color scheme is a pair of colors which are on the opposite of each other on the color wheel.



42.7027, 27.1400, 22.3899



45.7898, 67.7336, 67.7923

Split Complementary

Split-complementary colors differ from the complementary color scheme. The scheme consists of three colors, the original color and two neighbors of the complement color.



16.3632, 27.1400, 65.7071



42.7027, 27.1400, 22.3899



14.4260, 27.1400, 18.0085

Square

The Square scheme is like the rectangle color scheme, but the four colors are evenly spaced on the color wheel.



42.7027, 27.1400, 22.3899



23.1564, 27.1400, 4.7209



14.0696, 27.1400, 38.0958



28.6285, 27.1400, 91.4745

Rectangle

The Rectangle color scheme consists of four colors that form a rectangle on the color wheel.



42.7027, 27.1400, 22.3899



33.4550, 27.1400, 6.1567



14.0696, 27.1400, 38.0958



19.4050, 27.1400, 82.3406

Sweetspot

The Sweet Spot groups the original color and five complimentary colors.



42.7034, 27.1415, 22.3904



76.0667, 70.7170, 75.8017



43.9947, 26.4520, 83.6758



15.7587, 14.3377, 15.2897



0.0000, 0.0000, 0.0000



20.3446, 21.4041, 23.3091

Same Dimension

The Same Dimension uses a secret algorithm to generate beautiful new colors.



42.7034, 27.1415, 22.3904



46.0168, 26.3160, 17.3880



45.1587, 34.9528, 14.2660



15.9225, 15.8187, 17.1483



20.0976, 10.3115, 3.1647



1.7090, 0.8726, 0.4582

Inverse Universe

The Inverse Universe completely reimagines the original color for something new.



42.7034, 27.1415, 22.3904



46.0168, 26.3160, 17.3880



40.1258, 49.1535, 88.2615



15.9225, 15.8187, 17.1483



20.0976, 10.3115, 3.1647



1.7090, 0.8726, 0.4582

Previews

White Background



This preview shows how the XYZ color 42.7027, 27.1400, 22.3899 looks on a white background.

Color Contrast Check

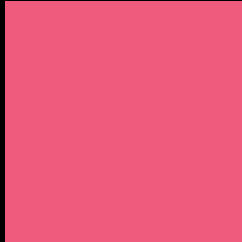
Large Text (above 18pt) WCAG AA ✓ Pass

Any Text WCAG AA ✗ Fail

Large Text (above 18pt) WCAG AAA ✗ Fail

Any Text WCAG AAA ✗ Fail

Black Background



This preview shows how the XYZ color 42.7027, 27.1400, 22.3899 looks on a black background.

Color Contrast Check

Large Text (above 18pt) WCAG AA ✓ Pass

Any Text WCAG AA ✓ Pass

Large Text (above 18pt) WCAG AAA ✓ Pass

Any Text WCAG AAA × Fail

If you want to check with other color combinations, try the [Color Contrast Checker](#).

XYZ 42.7027, 27.1400, 22.3899

Background



This preview shows how black text looks on a background with the XYZ color 42.7027, 27.1400, 22.3899.



This preview shows how white text looks on a background with the XYZ color 42.7027, 27.1400,

Color Blindness Simulation

Color vision deficiency is a very complex topic, and I could not describe the different causes any better than Wikipedia does, so if you want to learn more, you should check out their [article about color blindness](#).

Dichromacy



Original Color

42.7027, 27.1400, 22.3899

Protanopia

26.4958, 27.3638, 33.5910

Deuteranopia

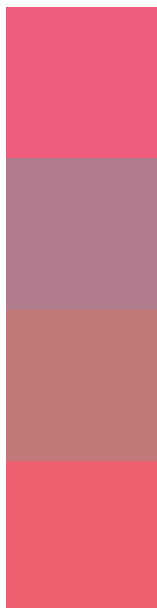
27.7327, 27.1987, 20.9277



Tritanopia

41.0826, 26.9766, 15.6121

Trichromacy



Original Color

42.7027, 27.1400, 22.3899

Protanomaly

30.0969, 25.4660, 28.9203

Deuteranomaly

31.9059, 26.0199, 21.4299

Tritanomaly

41.7422, 27.1357, 17.7895

Monochromacy



Original Color

42.7027, 27.1400, 22.3899

Achromatopsia

24.5403, 25.8183, 28.1161

Achromatomaly

28.9418, 24.7543, 25.8069

CSS Examples

Text

The CSS property to change the color of the text to XYZ 42.7027, 27.1400, 22.3899 is called "color". The color property can be set on classes, ids or directly on the HTML element.

This example shows how text in the color `rgb(238, 91, 125)` looks like.

```
.text, #text, p{  
    color:rgb(238, 91, 125)  
}
```

If you want to add a text shadow in that color use the text-shadow property, you can generate a text shadow directly with our [CSS Text Shadow Generator](#).

Here you see how black text with a 4 pixel rgb(238, 91, 125) colored shadow looks like.

```
.shadow{ text-shadow: 4px 4px 2px rgb(238, 91, 125) }
```

Border

The CSS property to change the border of an element to XYZ 42.7027, 27.1400, 22.3899 is called "border". The border property can be set on classes, ids or directly on the HTML element.

This example shows the color as border, it can be applied via the CSS property "border" or "border-color".

```
.border, #border, table{ border:4px solid rgb(238, 91, 125) }
```


If only the border color should be changed use the property `border-color`.

```
.border{ border-color:rgb(238, 91, 125) }
```

If you want to add a box shadow in that color use:

Here you see how a box with a 4 pixel `rgb(238, 91, 125)` colored shadow looks like.

```
.boxshadow{ -moz-box-shadow:4px 4px 4px  
4px rgb(238, 91, 125); -webkit-box-  
shadow:4px 4px 4px 4px rgb(238, 91, 125);  
box-shadow:4px 4px 4px 4px rgb(238, 91,  
125) }
```

Background

The CSS property to change the background color of an element to XYZ 42.7027, 27.1400, 22.3899 is called "background". The background property can be set on classes, ids or directly on the HTML element.

```
.background, #background, body{  
background: rgb(238, 91, 125) }
```

If only the background color should be changed can be used:

```
.background{ background-color: rgb(238, 91,  
125) }
```

This example shows the color as background, it is applied via the CSS property "background".

To optimize and compress your CSS code, you can use our [online CSS compressor and optimizer](#) based on csstidy. If you want to create a linear or radial gradient as background or border, check our [CSS Gradient Generator](#).

Hey! You found this booklet interesting? Support Converting Colors with the new Membership Option!

The pro membership hides all ads, plus gives you double the colors in the color bucket, and more awesome pro features!

[Learn more, Memberships starting at \\$2.50/m!](#)

**Follow me
on Twitter!**

@ConvertingColor